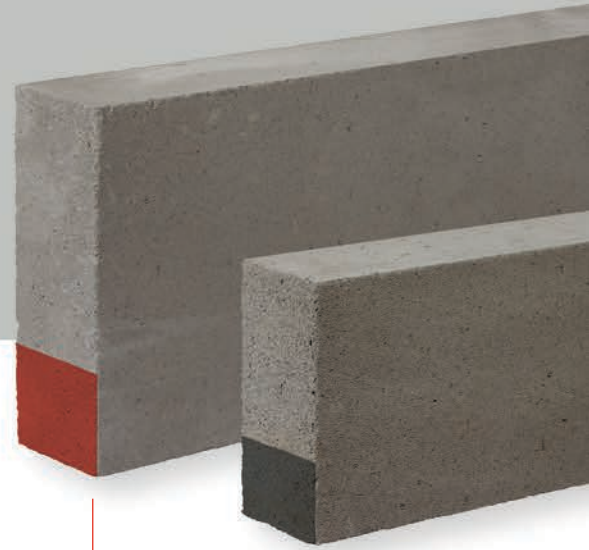


High Strength Grade and Super Strength Grade



Super Strength Grade (red)

High Strength Grade (black)

High Strength Grade and Super Strength Grade are used principally where higher compressive strengths are required such as in the foundations and lower storeys of three and four storey buildings, piers under high vertical loads and in multi-storey buildings.



Higher Strength grades are available in compressive strengths of 7.3N/mm² and 8.7N/mm² and in thicknesses from 100mm to 355mm. They are third party accredited under BBA and certified for use in the applications listed.



Applications

- Internal and external leaf of cavity walls
- Solid walls
- Separating walls
- Flanking walls
- Partitions
- Multi storey buildings
- Foundations



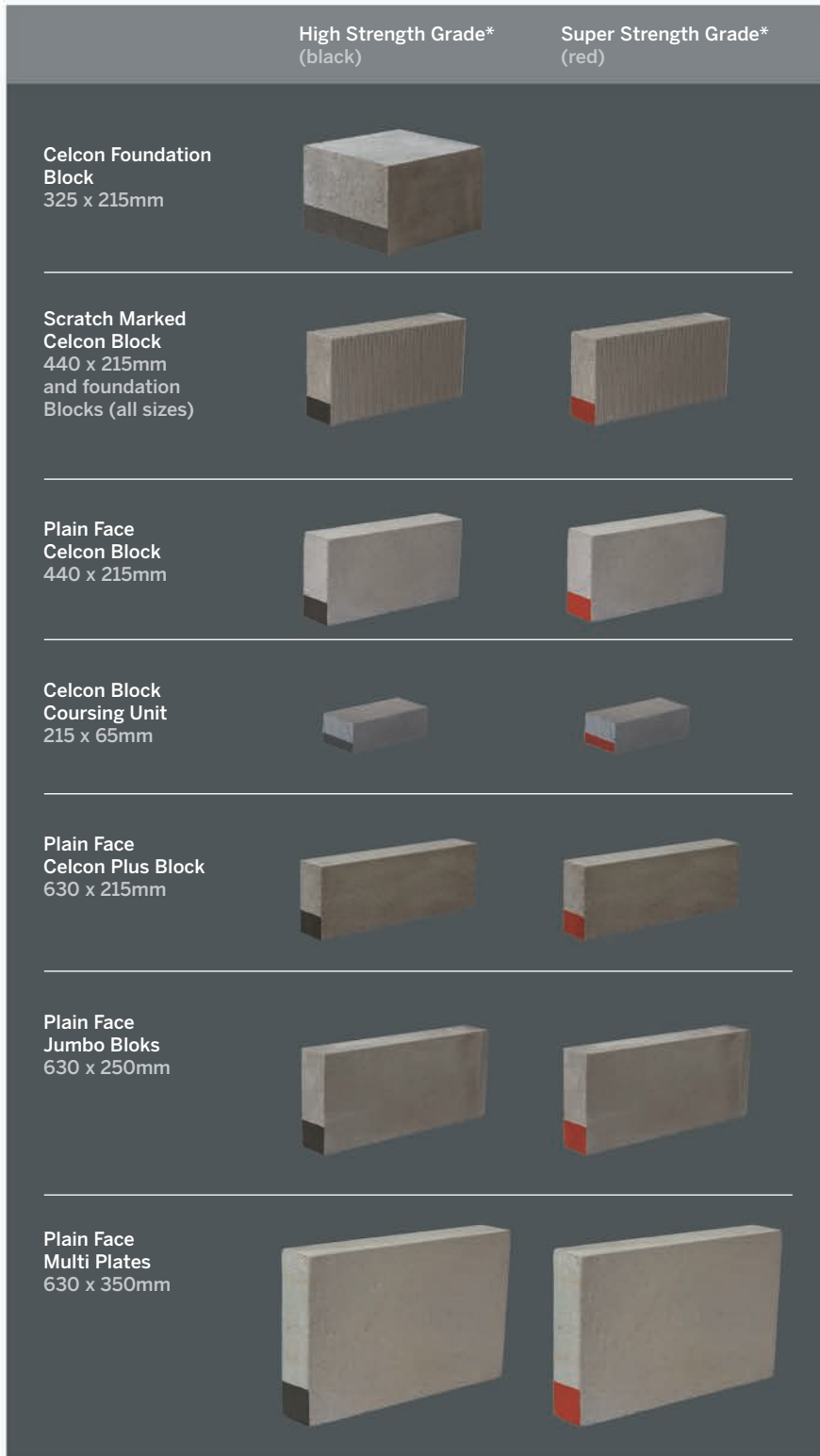
High Strength Grade

Super Strength Grade

Note: High Strength Grade and Super Strength Grade aircrete is identified with a black or red line respectively. Whilst the colour remains consistent, the positioning of the line may vary.

	High Strength Grade	Super Strength Grade
Compressive Strength	7.3N/mm ²	8.7N/mm ²
Thermal Conductivity	0.18 W/mK	0.18 W/mK
Density	700 kg/m ³	700 kg/m ³

High Strength Grade and Super Strength Grade



Celcon Blocks, Jumbo Bloks and Multi Plates

Available in High Strength and Super Strength Grades

* Whilst the colour reference for High Strength and Super Strength Grades remain consistent, the positioning of the line may vary.

For further information and to check our most up-to-date product range please visit our website www.hhcelcon.co.uk or contact the following departments:

Sales

For sales enquiries or to find your local stockist please contact
Tel: 01732 886444
Fax: 01732 887013

Technical

For technical enquiries please contact
Tel: 01732 880580
Fax: 01732 880581
Email: technical.services@hhcelcon.co.uk