

Detail Ref.	Detail Title
HH-FF-01	External Masonry Cavity Wall, Full-Fill - Suspended Beam And Block Floor, Insulation Above Slab
HH-FF-02	External Masonry Cavity Wall, Full-Fill - Suspended In-Situ Concrete Floor, Insulation Below Slab
HH-FF-03	External Masonry Cavity Wall, Full-Fill - Concrete Ground Bearing Floor, Insulation Below Slab
HH-FF-04	External Masonry Cavity Wall, Full-Fill - Independent Lintel
HH-FF-05	External Masonry Cavity Wall, Full-Fill - Steel Lintel, Perforated Base Plate, (Insulated Soffit)
HH-FF-22	External Masonry Cavity Wall, Full-Fill - Steel Lintel, Open Back (no continuous base plate)
HH-FF-06	External Masonry Cavity Wall, Full-Fill - Sill
HH-FF-07	External Masonry Cavity Wall, Full-Fill - Jamb
HH-FF-08	External Masonry Cavity Wall, Full-Fill - Intermediate Timber Floor Within A Dwelling
HH-FF-09	External Masonry Cavity Wall, Full-Fill - Precast Concrete Separating Floor Between Dwellings
HH-FF-10	External Masonry Cavity Wall, Full-Fill - Pitched Roof, Gable, Insulation At Ceiling Level, Ventilated Loft
HH-FF-11	External Masonry Cavity Wall, Full-Fill - Pitched Roof, Gable, Insulation At Rafter Level, Unventilated Rafter Void
HH-FF-12	External Masonry Cavity Wall, Full-Fill - Pitched Roof, Eaves, Insulation At Ceiling Level, Ventilated Loft
HH-FF-13	External Masonry Cavity Wall, Full-Fill - Pitched Roof, Eaves, Insulation At Rafter Level, Unventilated Rafter Void
HH-FF-23	External Masonry Cavity Wall, Full-Fill - Pitched Roof, Eaves - Insulation At Rafter Level, Unventilated Rafter Void
HH-FF-14	External Masonry Cavity Wall, Full-Fill - Normal Corner
HH-FF-15	External Masonry Cavity Wall, Full-Fill - Inverted Corner
HH-FF-16	External Masonry Cavity Wall, Full-Fill - Party Wall Between Dwellings
HH-PW-17	Party Wall Masonry, Full Fill - Suspended Beam And Block Floor, Insulation Above Slab
HH-PW-18	Party Wall Masonry, Full Fill - Suspended Concrete Floor, Insulation Below Slab
HH-PW-19	Party Wall Masonry, Full Fill - In-Situ Concrete Ground Bearing Floor, Insulation Below Slab
HH-PW-20	Party Wall Masonry, Full Fill - Roof, Insulation At Ceiling Level, Ventilated Loft
HH-PW-21	Party Wall Masonry, Full Fill - Roof, Insulation At Rafter Level, Unventilated Rafter Void

REV.	DATE.	DESCRIPTION.	BY.
A	11/2014	HH-FF-22 & HH-FF-23 ADDED	SJB

These details have been produced for guidance only. It is the responsibility of the building designer to ensure that the details shown are compatible with the overall building design and will satisfy the relevant parts of the Building Regulations applicable before they are adopted into the project design.

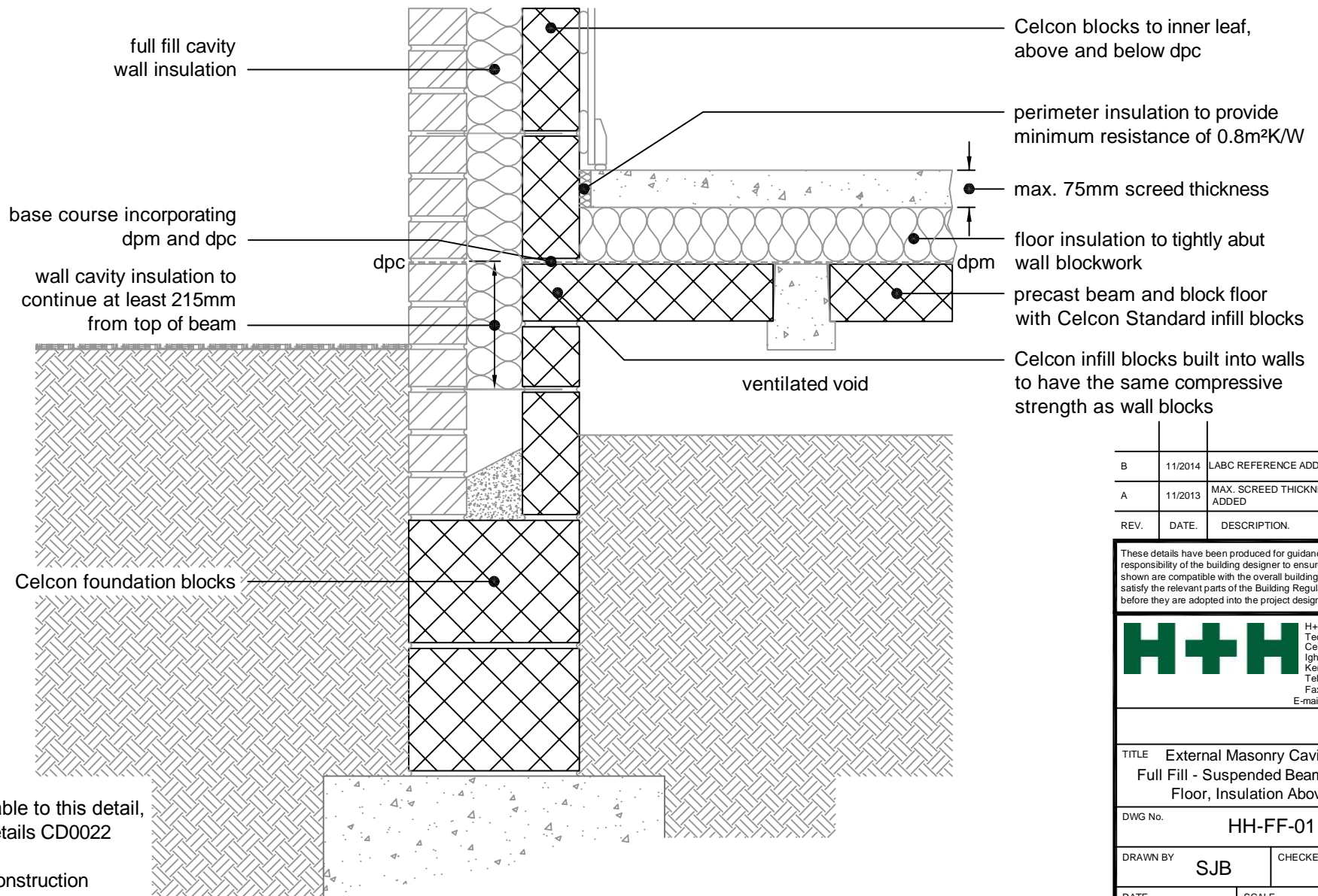


TITLE **Standard Junction Details  
(Full Fill)**

DWG No. **INDEX**

DRAWN BY **SJB** CHECKED BY **AHR**

DATE **Feb 2013** SCALE **N.T.S.** REV.NO. **A**



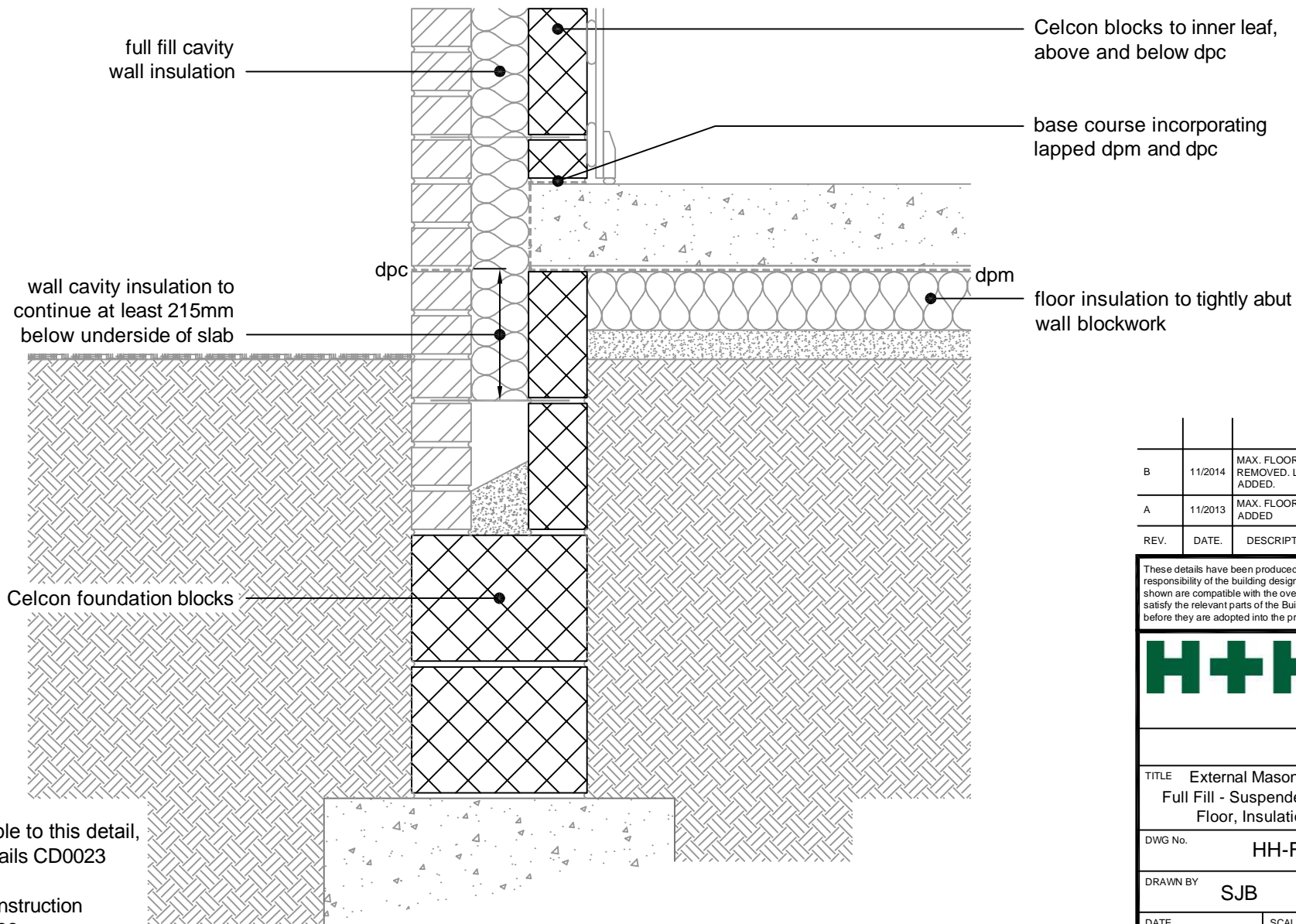
For  $\Psi$  values applicable to this detail, see Constructive Details CD0022 or LABC Registered Construction Details E5MCFF16 - 21.

B	11/2014	LABC REFERENCE ADDED	SJB
A	11/2013	MAX. SCREED THICKNESS NOTE ADDED	SJB
REV.	DATE.	DESCRIPTION.	BY.

These details have been produced for guidance only. It is the responsibility of the building designer to ensure that the details shown are compatible with the overall building design and will satisfy the relevant parts of the Building Regulations applicable before they are adopted into the project design.

**H+H** H+H UK Limited  
 Technical Services Dept.  
 Celcon House  
 Ightham, Sevenoaks  
 Kent, TN15 9HZ.  
 Tel +44 (0)1732 880580  
 Fax +44 (0)1732 887013  
 E-mail tsd@hhcelcon.co.uk

TITLE		External Masonry Cavity Wall, Full Fill - Suspended Beam And Block Floor, Insulation Above Slab	
DWG No.		HH-FF-01	
DRAWN BY	SJB	CHECKED BY	AHR
DATE	Feb 2013	SCALE	1:100 @ A4
REV.NO.	B		



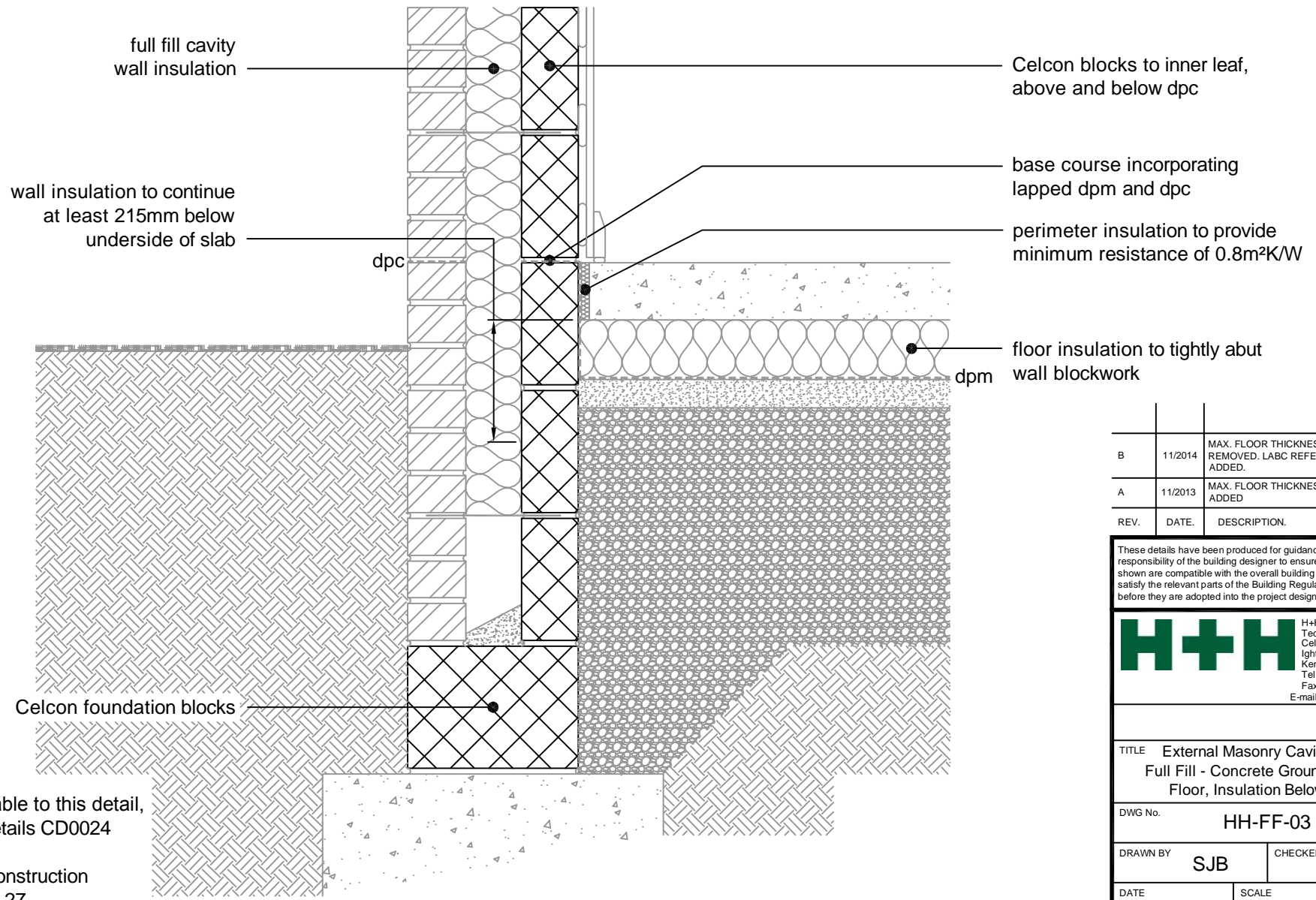
For  $\Psi$  values applicable to this detail, see Constructive Details CD0023 or LABC Registered Construction Details E5MCFF28 - 33.

REV.	DATE.	DESCRIPTION.	BY.
B	11/2014	MAX. FLOOR THICKNESS NOTE REMOVED. LABC REFERENCE ADDED.	SJB
A	11/2013	MAX. FLOOR THICKNESS NOTE ADDED.	SJB

These details have been produced for guidance only. It is the responsibility of the building designer to ensure that the details shown are compatible with the overall building design and will satisfy the relevant parts of the Building Regulations applicable before they are adopted into the project design.

**H+H** H+H UK Limited  
 Technical Services Dept.  
 Celcon House  
 Ightham, Sevenoaks  
 Kent, TN15 9HZ.  
 Tel +44 (0)1732 880580  
 Fax +44 (0)1732 887013  
 E-mail tsd@hhcelcon.co.uk

TITLE External Masonry Cavity Wall, Full Fill - Suspended In-Situ Concrete Floor, Insulation Below Slab			
DWG No.		HH-FF-02	
DRAWN BY		CHECKED BY	
SJB		AHR	
DATE	SCALE	REV.NO.	
Feb 2013	1:100 @ A4	B	



For  $\Psi$  values applicable to this detail, see Constructive Details CD0024 or LABC Registered Construction Details E5MCF22 - 27.

REV.	DATE.	DESCRIPTION.	BY.
B	11/2014	MAX. FLOOR THICKNESS NOTE REMOVED. LABC REFERENCE ADDED.	SJB
A	11/2013	MAX. FLOOR THICKNESS NOTE ADDED.	SJB

These details have been produced for guidance only. It is the responsibility of the building designer to ensure that the details shown are compatible with the overall building design and will satisfy the relevant parts of the Building Regulations applicable before they are adopted into the project design.

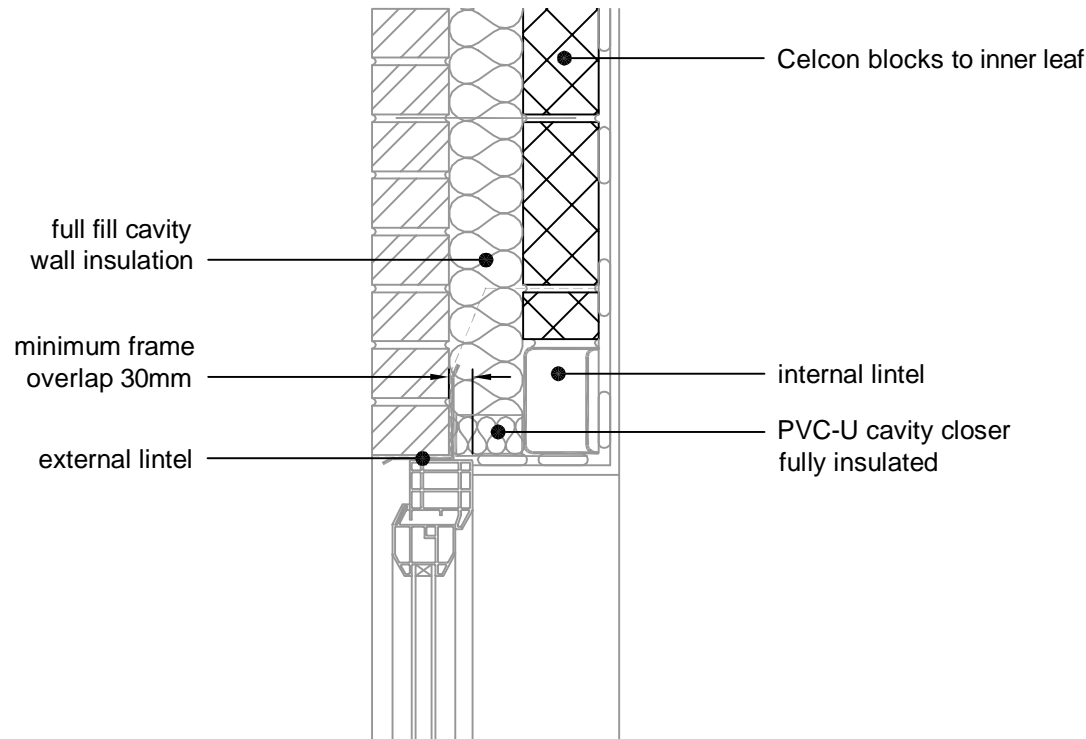
**H+H** H+H UK Limited  
 Technical Services Dept.  
 Celcon House  
 Ightham, Sevenoaks  
 Kent, TN15 9HZ.  
 Tel +44 (0)1732 880580  
 Fax +44 (0)1732 887013  
 E-mail tsd@hhcelcon.co.uk

TITLE External Masonry Cavity Wall,  
 Full Fill - Concrete Ground Bearing  
 Floor, Insulation Below Slab

DWG No. HH-FF-03

DRAWN BY SJB CHECKED BY AHR

DATE Feb 2013 SCALE 1:100 @ A4 REV.NO. B



For  $\Psi$  values applicable to this detail,  
 see Constructive Details CD0025  
 or  
 LABC Registered Construction  
 Details E2MCFF4 - 6.

REV.	DATE	DESCRIPTION	BY.
A	11/2014	LABC NOTE ADDED	SJB

These details have been produced for guidance only. It is the responsibility of the building designer to ensure that the details shown are compatible with the overall building design and will satisfy the relevant parts of the Building Regulations applicable before they are adopted into the project design.

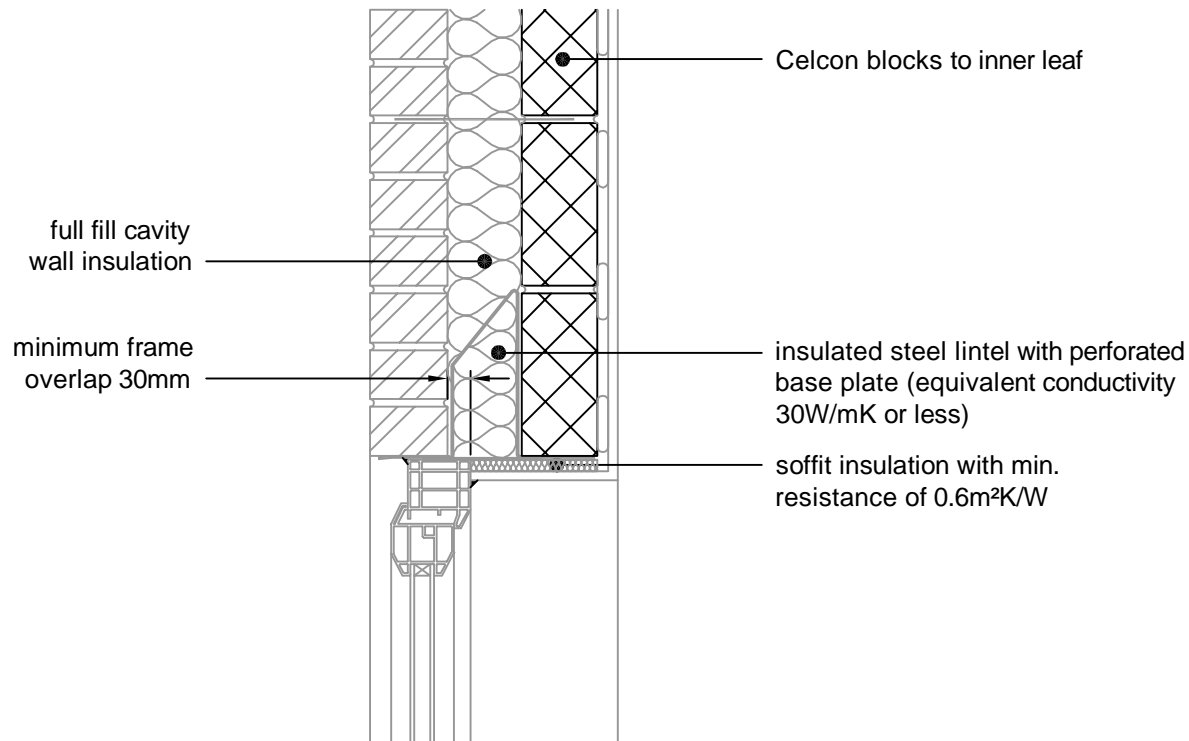
**H+H** H+H UK Limited  
 Technical Services Dept.  
 Celcon House  
 Ightham, Sevenoaks  
 Kent, TN15 9HZ.  
 Tel +44 (0)1732 880580  
 Fax +44 (0)1732 887013  
 E-mail tsd@hhcelcon.co.uk

TITLE  
**External Masonry Cavity Wall,  
 Full Fill - Independent Lintel**

DWG No. **HH-FF-04**

DRAWN BY **SJB** CHECKED BY **AHR**

DATE **Feb 2013** SCALE **1:100 @ A4** REV.NO. **A**



For  $\Psi$  values applicable to this detail,  
 see Constructive Details CD0026  
 or  
 LABC Registered Construction  
 Details E1MCFF4 - 6.

REV.	DATE.	DESCRIPTION.	BY.
A	11/2014	MAX. LINTEL HEIGHT NOTE REMOVED. LINTEL BASEPLATE ADDED. LABC REFERENCE ADDED	SJB

These details have been produced for guidance only. It is the responsibility of the building designer to ensure that the details shown are compatible with the overall building design and will satisfy the relevant parts of the Building Regulations applicable before they are adopted into the project design.

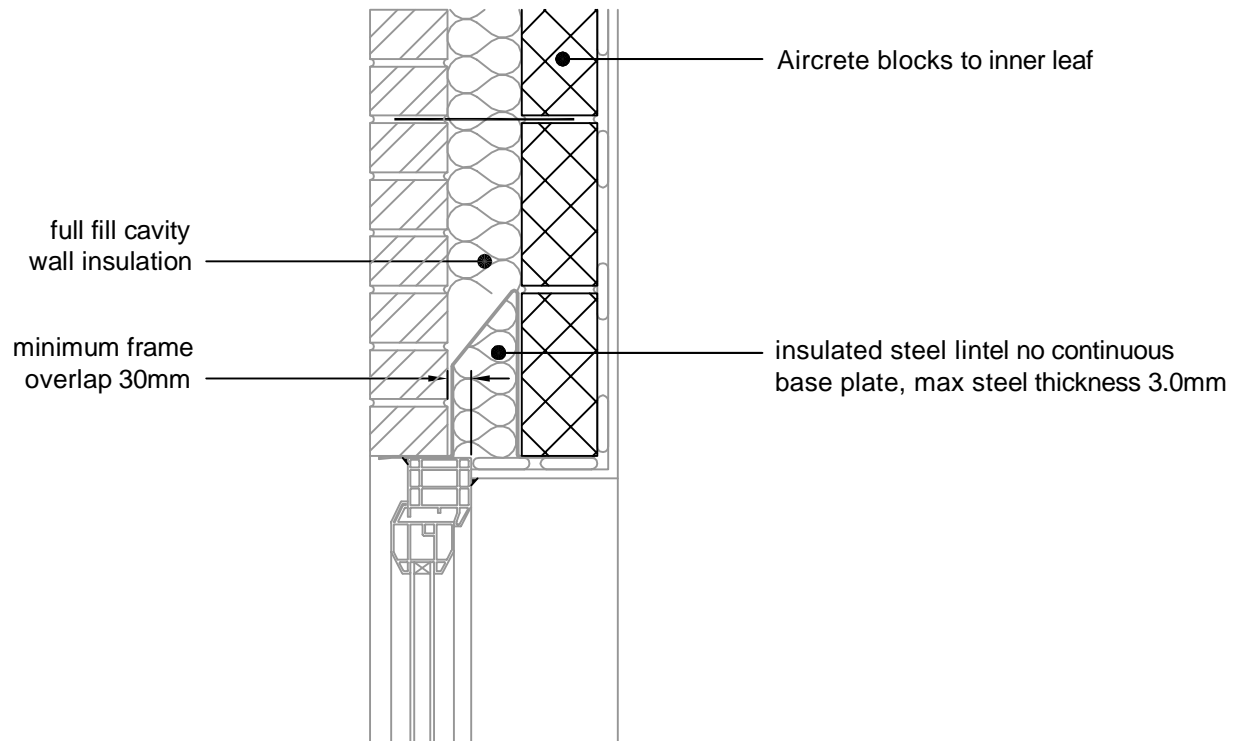
**H+H** H+H UK Limited  
 Technical Services Dept.  
 Celcon House  
 Ightham, Sevenoaks  
 Kent, TN15 9HZ.  
 Tel +44 (0)1732 880580  
 Fax +44 (0)1732 887013  
 E-mail tsd@hhcelcon.co.uk

TITLE External Masonry Cavity Wall,  
 Full Fill - Steel Lintel, Perforated  
 Base Plate, (Insulated Soffit)

DWG No. HH-FF-05

DRAWN BY SJB CHECKED BY AHR

DATE Feb 2013 SCALE 1:100 @ A4 REV.NO. A



For  $\Psi$  values applicable to this detail, see LABC Registered Construction Details E2MCFF7 - 9.

REV.	DATE.	DESCRIPTION.	BY.

These details have been produced for guidance only. It is the responsibility of the building designer to ensure that the details shown are compatible with the overall building design and will satisfy the relevant parts of the Building Regulations applicable before they are adopted into the project design.

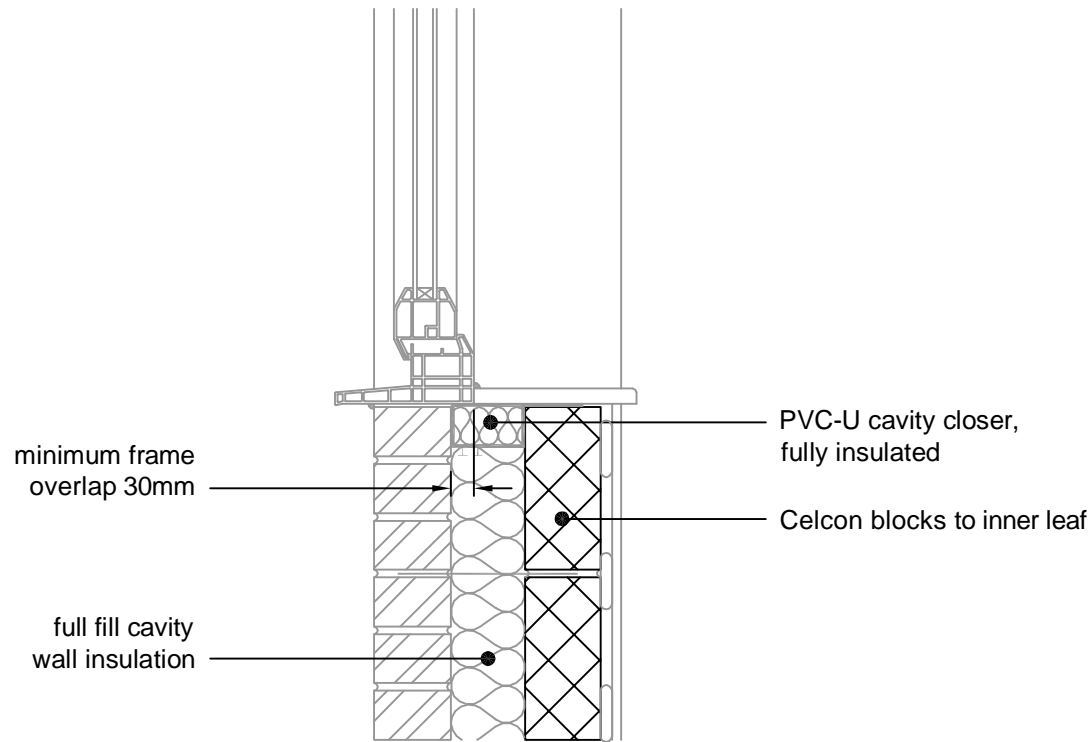
**H+H** H+H UK Limited  
 Technical Services Dept.  
 Celcon House  
 Ightham, Sevenoaks  
 Kent, TN15 9HZ.  
 Tel +44 (0)1732 880580  
 Fax +44 (0)1732 887013  
 E-mail tsd@hhcelcon.co.uk

TITLE External Masonry Cavity Wall,  
 Full Fill - Steel Lintel, Open Back,  
 (no continuous base plate)

DWG No. HH-FF-22

DRAWN BY SJB CHECKED BY AHR

DATE Nov 2014 SCALE 1:100 @ A4 REV.NO. 0



For  $\Psi$  values applicable to this detail,  
 see Constructive Details CD0027  
 or  
 LABC Registered Construction  
 Details E3MCFF4 - 6.

REV.	DATE.	DESCRIPTION.	BY.
A	11/2014	LABC NOTE ADDED	SJB

These details have been produced for guidance only. It is the responsibility of the building designer to ensure that the details shown are compatible with the overall building design and will satisfy the relevant parts of the Building Regulations applicable before they are adopted into the project design.

**H+H** H+H UK Limited  
 Technical Services Dept.  
 Celcon House  
 Ightham, Sevenoaks  
 Kent, TN15 9HZ.  
 Tel +44 (0)1732 880580  
 Fax +44 (0)1732 887013  
 E-mail tsd@hhcelcon.co.uk

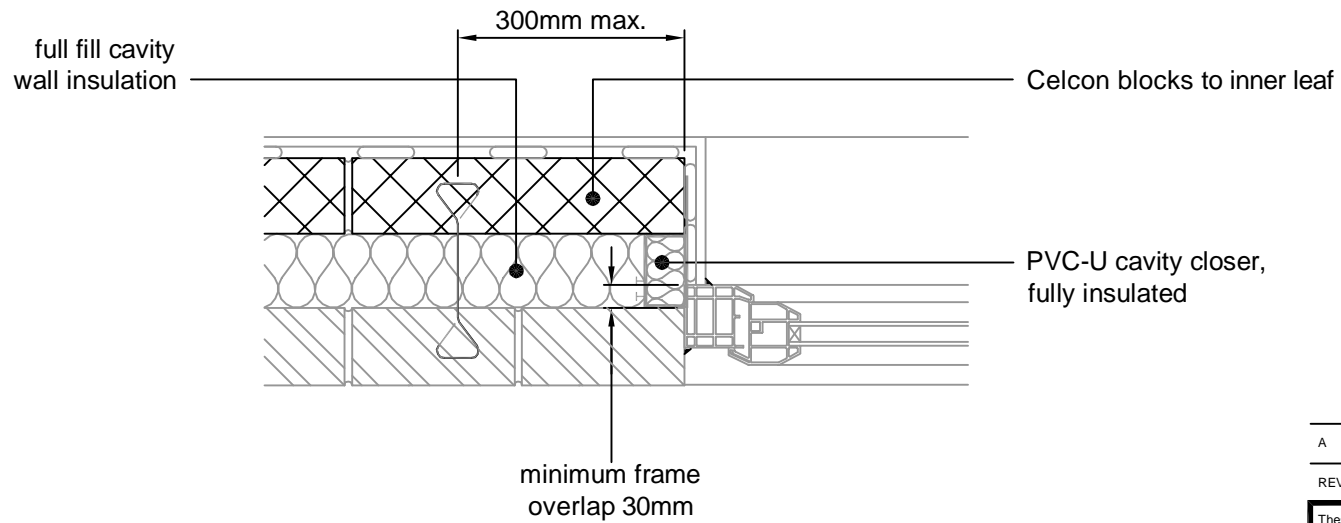
TITLE  
 External Masonry Cavity Wall,  
 Full Fill - Sill

DWG No. HH-FF-06

DRAWN BY SJB CHECKED BY AHR

DATE Feb 2013 SCALE 1:100 @ A4 REV.NO. A





For  $\Psi$  values applicable to this detail,  
 see Constructive Details CD0028  
 or  
 LABC Registered Construction  
 Details E4MCFF4 - 6.

REV.	DATE.	DESCRIPTION.	BY.
A	11/2014	LABC NOTE ADDED	SJB

These details have been produced for guidance only. It is the responsibility of the building designer to ensure that the details shown are compatible with the overall building design and will satisfy the relevant parts of the Building Regulations applicable before they are adopted into the project design.

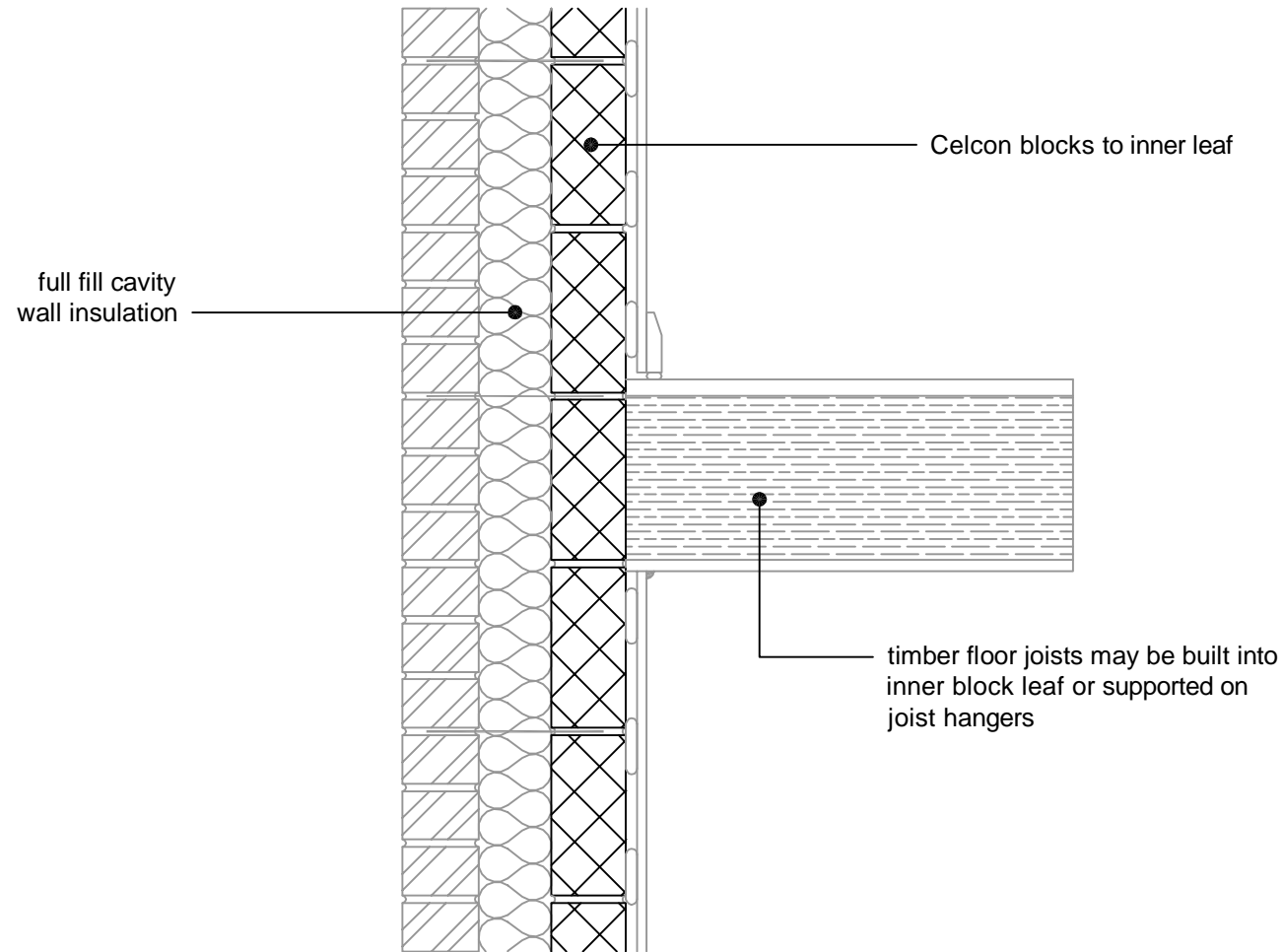
**H+H** H+H UK Limited  
 Technical Services Dept.  
 Celcon House  
 Ightham, Sevenoaks  
 Kent, TN15 9HZ.  
 Tel +44 (0)1732 880580  
 Fax +44 (0)1732 887013  
 E-mail tsd@hhcelcon.co.uk

TITLE  
 External Masonry Cavity Wall,  
 Full Fill - Jamb

DWG No. HH-FF-07

DRAWN BY SJB CHECKED BY AHR

DATE Feb 2013 SCALE 1:100 @ A4 REV.NO. A



For  $\Psi$  values applicable to this detail,  
 see Constructive Details CD0029  
 or  
 LABC Registered Construction  
 Details E6MCFF4 - 6.

A	11/2014	LABC NOTE ADDED	SJB
REV.	DATE.	DESCRIPTION.	BY.

These details have been produced for guidance only. It is the responsibility of the building designer to ensure that the details shown are compatible with the overall building design and will satisfy the relevant parts of the Building Regulations applicable before they are adopted into the project design.

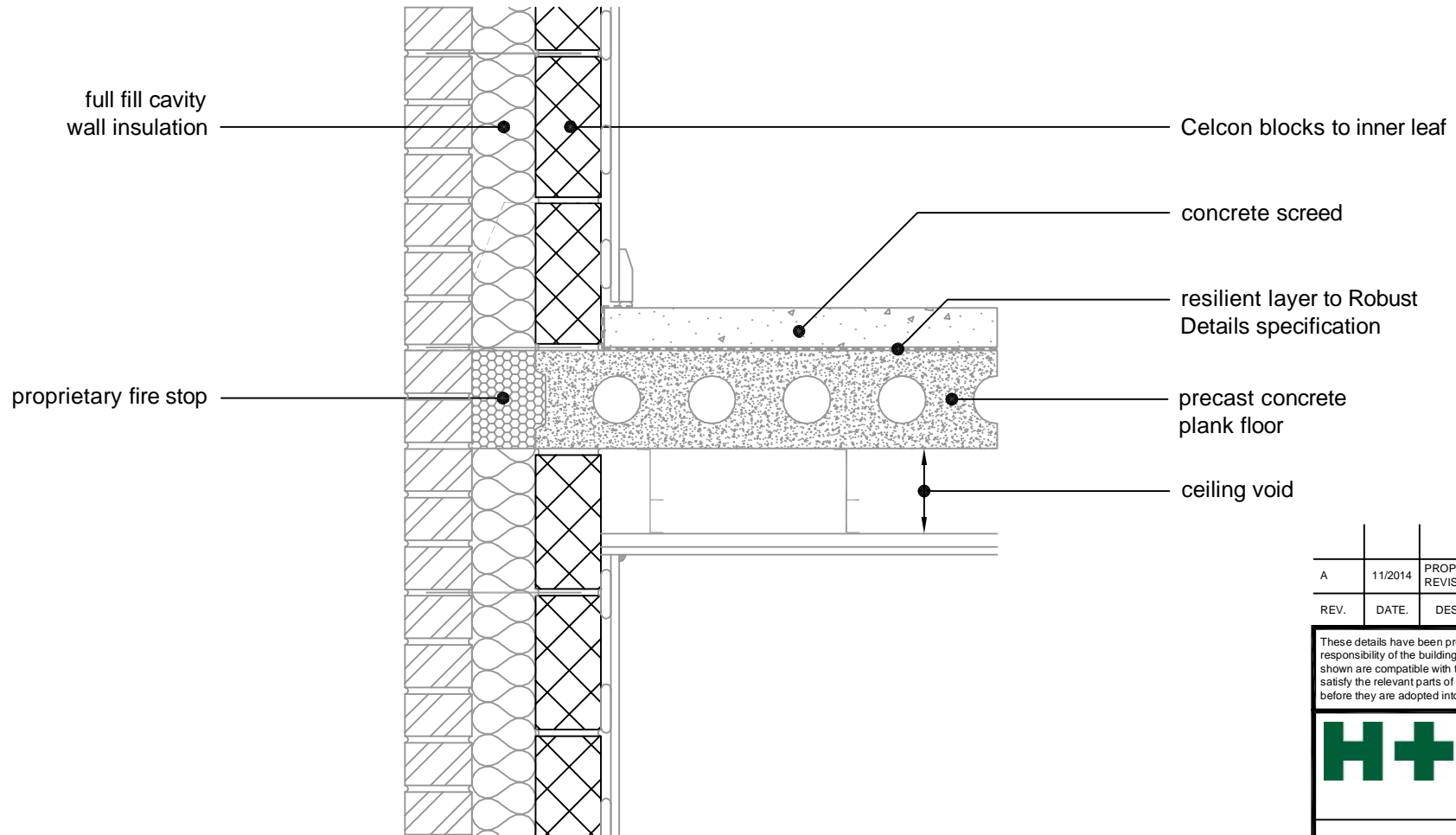
**H+H** H+H UK Limited  
 Technical Services Dept.  
 Celcon House  
 Ightham, Sevenoaks  
 Kent, TN15 9HZ.  
 Tel +44 (0)1732 880580  
 Fax +44 (0)1732 887013  
 E-mail tsd@hhcelcon.co.uk

TITLE External Masonry Cavity Wall,  
 Full Fill - Intermediate Timber Floor  
 Within A Dwelling

DWG No. HH-FF-08

DRAWN BY SJB CHECKED BY AHR

DATE Feb 2013 SCALE 1:100 @ A4 REV.NO. A



For  $\Psi$  values applicable to this detail,  
 see Constructive Details CD0030  
 or  
 LABC Registered Construction  
 Details E7MCFF4 - 6.

REV.	DATE.	DESCRIPTION.	BY.
A	11/2014	PROPRIETARY FIRE STOP NOTE REVISED. LABC NOTE ADDED.	SJB

These details have been produced for guidance only. It is the responsibility of the building designer to ensure that the details shown are compatible with the overall building design and will satisfy the relevant parts of the Building Regulations applicable before they are adopted into the project design.

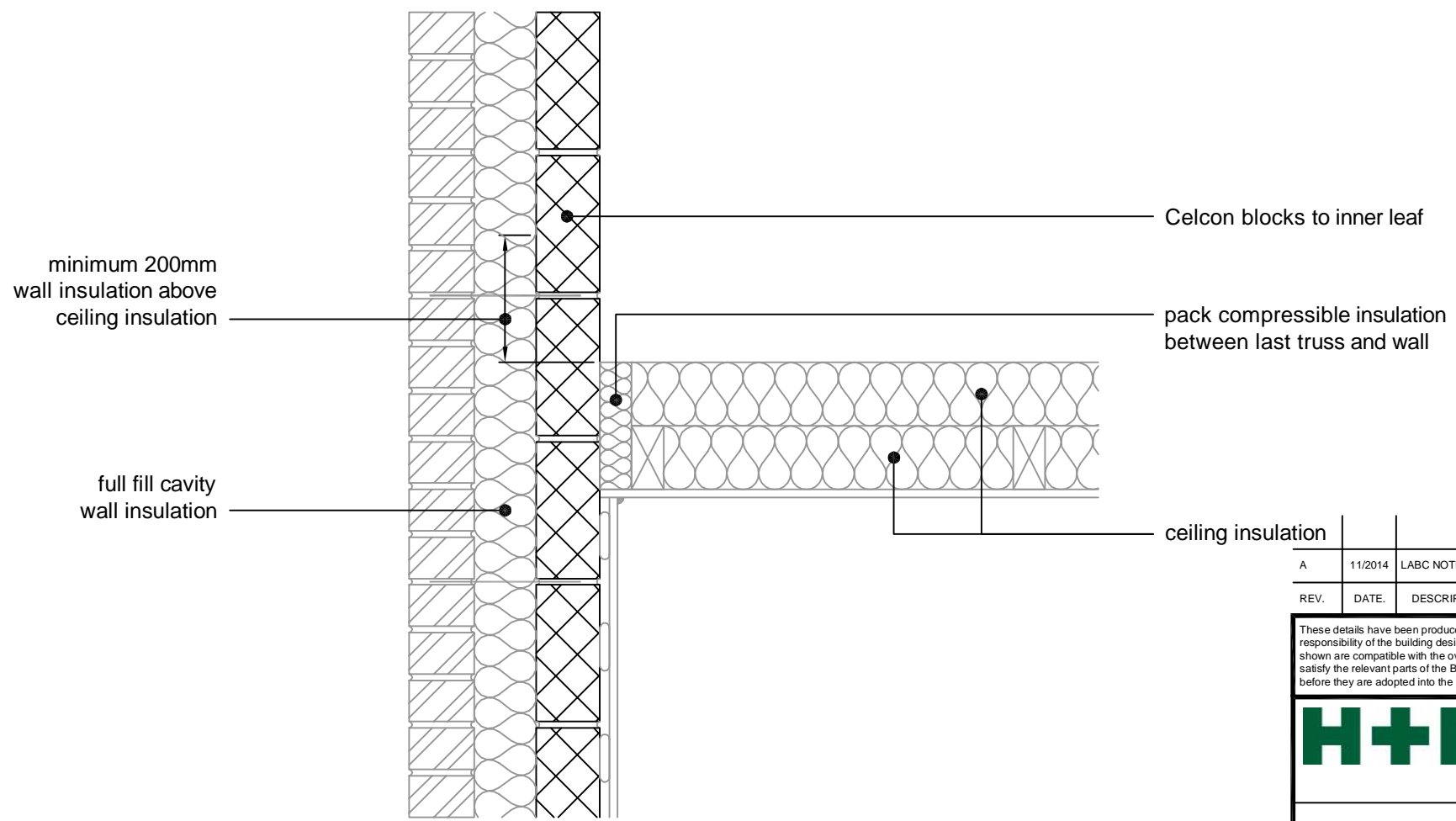
**H+H** H+H UK Limited  
 Technical Services Dept.  
 Celcon House  
 Ightham, Sevenoaks  
 Kent, TN15 9HZ.  
 Tel +44 (0)1732 880580  
 Fax +44 (0)1732 887013  
 E-mail tsd@hhcelcon.co.uk

TITLE External Masonry Cavity Wall,  
 Full Fill - Precast Concrete Separating  
 Floor Between Dwellings

DWG No. HH-FF-09

DRAWN BY SJB CHECKED BY AHR

DATE Feb 2013 SCALE 1:100 @ A4 REV.NO. A



For  $\Psi$  values applicable to this detail,  
 see Constructive Details CD0031  
 or  
 LABC Registered Construction  
 Details E12MCFF4 - 6.

REV.	DATE.	DESCRIPTION.	BY.
A	11/2014	LABC NOTE ADDED	SJB

These details have been produced for guidance only. It is the responsibility of the building designer to ensure that the details shown are compatible with the overall building design and will satisfy the relevant parts of the Building Regulations applicable before they are adopted into the project design.

**H+H** H+H UK Limited  
 Technical Services Dept.  
 Celcon House  
 Ightham, Sevenoaks  
 Kent, TN15 9HZ.  
 Tel +44 (0)1732 880580  
 Fax +44 (0)1732 887013  
 E-mail tsd@hhcelcon.co.uk

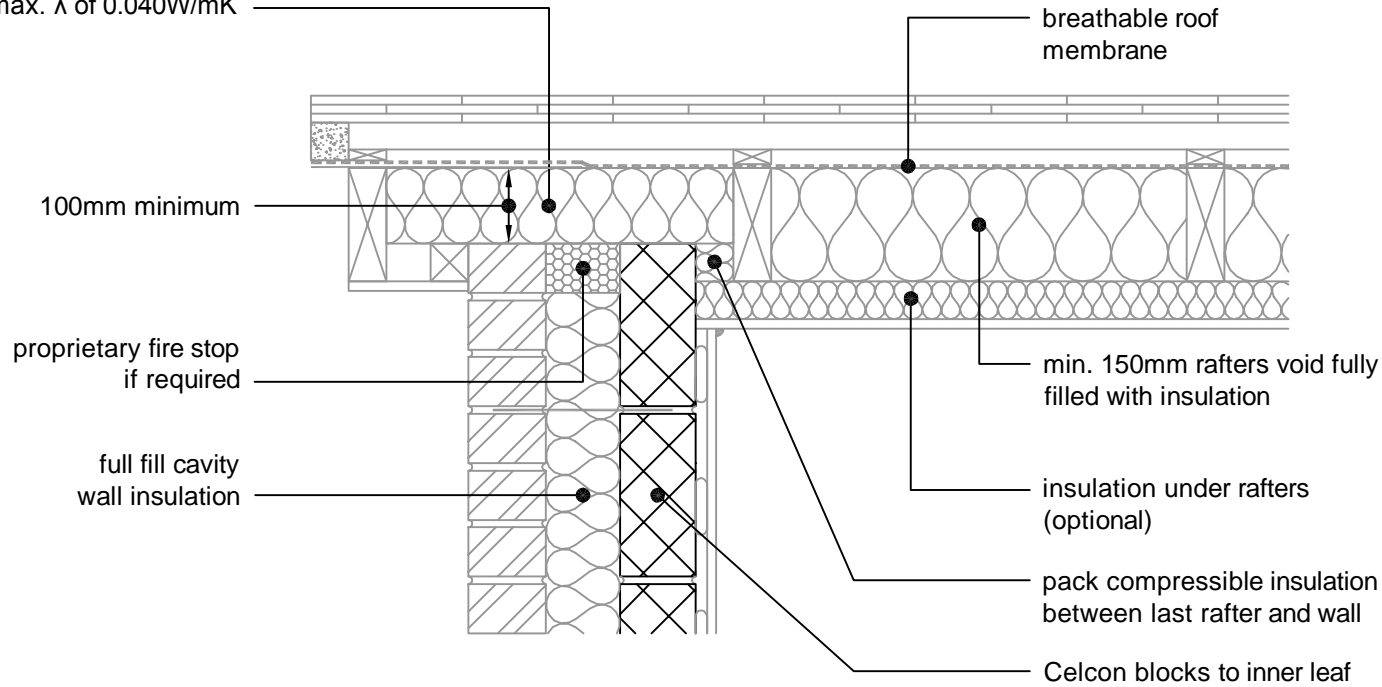
TITLE External Masonry Cavity Wall,  
 Full Fill - Pitched Roof, Gable -  
 Insulation At Ceiling Level, Ventilated Loft

DWG No. HH-FF-10

DRAWN BY SJB CHECKED BY AHR

DATE Feb 2013 SCALE 1:100 @ A4 REV.NO. A

fill this void with insulation  
having a max.  $\lambda$  of 0.040W/mK



REV.	DATE.	DESCRIPTION.	BY.
B	11/2014	PROPRIETARY FIRE STOP NOTE REVISED. LABC NOTE ADDED.	SJB
A	11/2013	RAFTERS INSULATION THICKNESS NOTE ADDED	SJB

These details have been produced for guidance only. It is the responsibility of the building designer to ensure that the details shown are compatible with the overall building design and will satisfy the relevant parts of the Building Regulations applicable before they are adopted into the project design.

**H+H** H+H UK Limited  
 Technical Services Dept.  
 Celcon House  
 Ightham, Sevenoaks  
 Kent, TN15 9HZ.  
 Tel +44 (0)1732 880580  
 Fax +44 (0)1732 887013  
 E-mail tsd@hhcelcon.co.uk

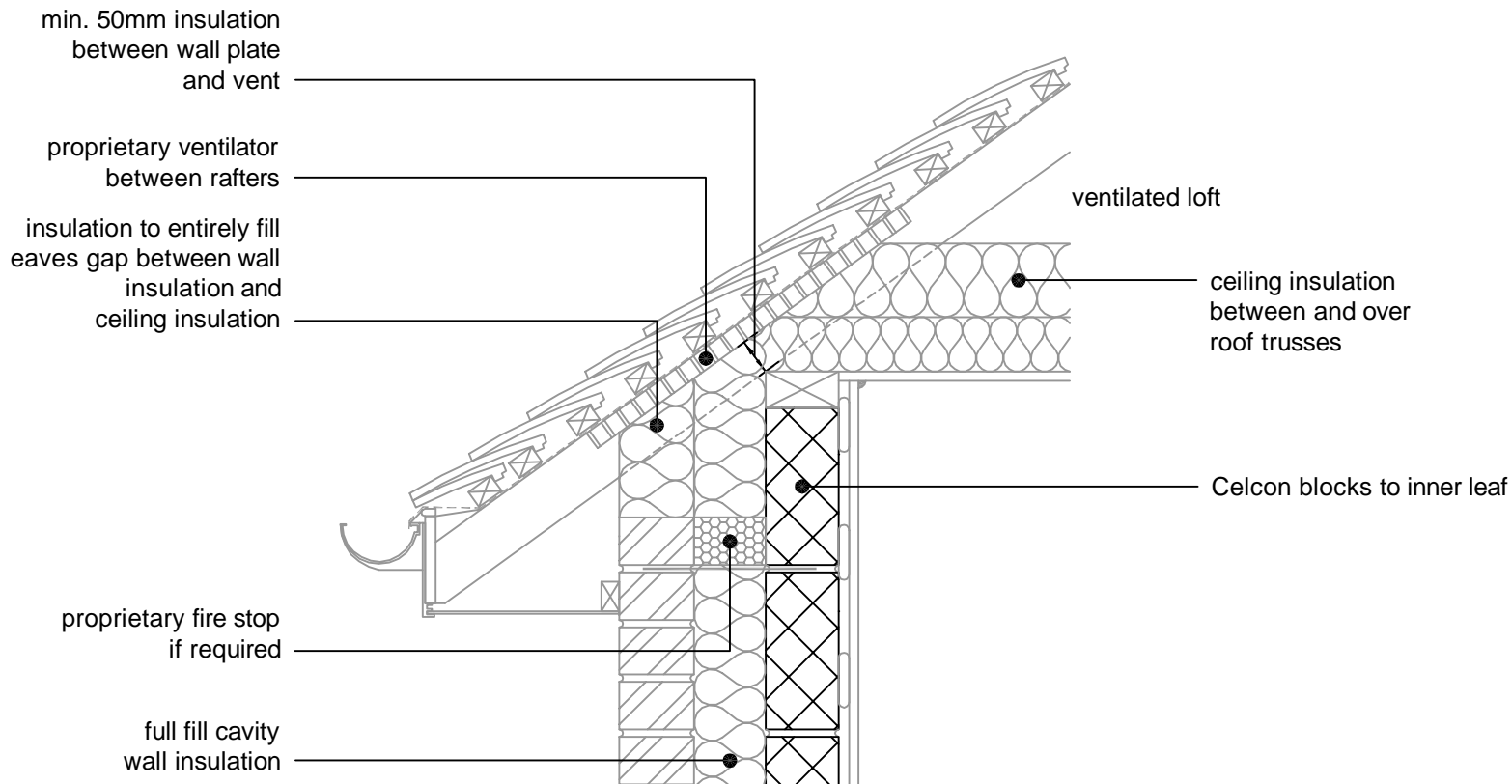
TITLE External Masonry Cavity Wall,  
 Full Fill - Pitched Roof, Gable - Insulation  
 At Rafter Level, Unventilated Rafter Void

DWG No. HH-FF-11

DRAWN BY SJB CHECKED BY AHR

DATE Feb 2013 SCALE 1:100 @ A4 REV.NO. B

For  $\Psi$  values applicable to this detail,  
 see Constructive Details CD0032  
 or  
 LABC Registered Construction  
 Details E13MCFF4 - 6.



For  $\Psi$  values applicable to this detail,  
 see Constructive Details CD0033  
 or  
 LABC Registered Construction  
 Details E10MCFF4 - 6.

REV.	DATE.	DESCRIPTION.	BY.
B	11/2014	PROPRIETARY FIRE STOP NOTE REVISED. LABC NOTE ADDED.	SJB
A	11/2013	WALL PLATE INSULATION COVER NOTE MOVED	SJB

These details have been produced for guidance only. It is the responsibility of the building designer to ensure that the details shown are compatible with the overall building design and will satisfy the relevant parts of the Building Regulations applicable before they are adopted into the project design.

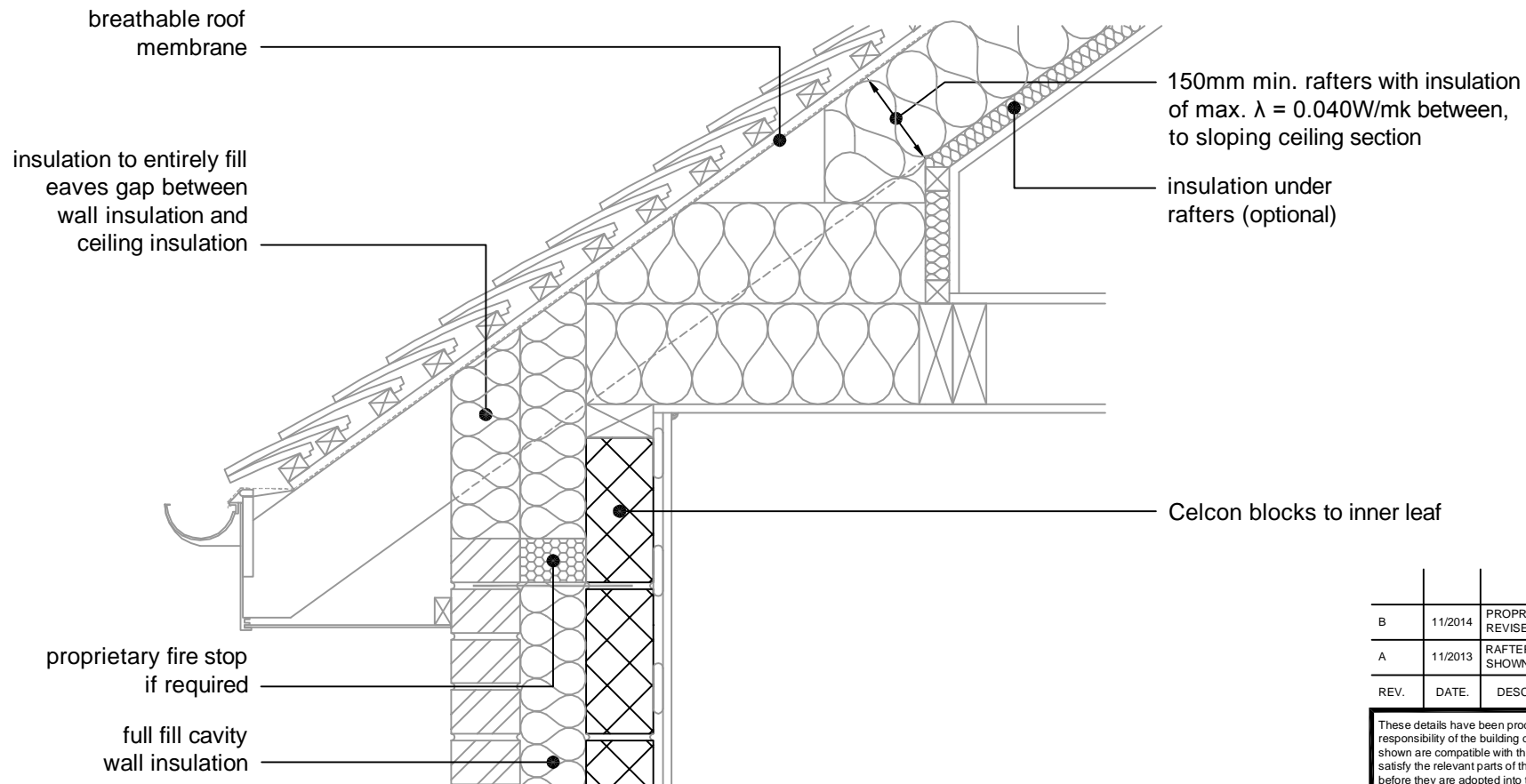
**H+H** H+H UK Limited  
 Technical Services Dept.  
 Celcon House  
 Ightham, Sevenoaks  
 Kent, TN15 9HZ.  
 Tel +44 (0)1732 880580  
 Fax +44 (0)1732 887013  
 E-mail tsd@hhcelcon.co.uk

TITLE External Masonry Cavity Wall,  
 Full Fill - Pitched Roof, Eaves - Insulation  
 At Ceiling Level, Ventilated Loft

DWG No. HH-FF-12

DRAWN BY SJB CHECKED BY AHR

DATE Feb 2013 SCALE 1:100 @ A4 REV.NO. B



For  $\Psi$  values applicable to this detail, see Constructive Details CD0034.

REV.	DATE.	DESCRIPTION.	BY.
B	11/2014	PROPRIETARY FIRE STOP NOTE REVISED.	SJB
A	11/2013	RAFTERS INSULATION NOW SHOWN AS 150mm.	SJB

These details have been produced for guidance only. It is the responsibility of the building designer to ensure that the details shown are compatible with the overall building design and will satisfy the relevant parts of the Building Regulations applicable before they are adopted into the project design.

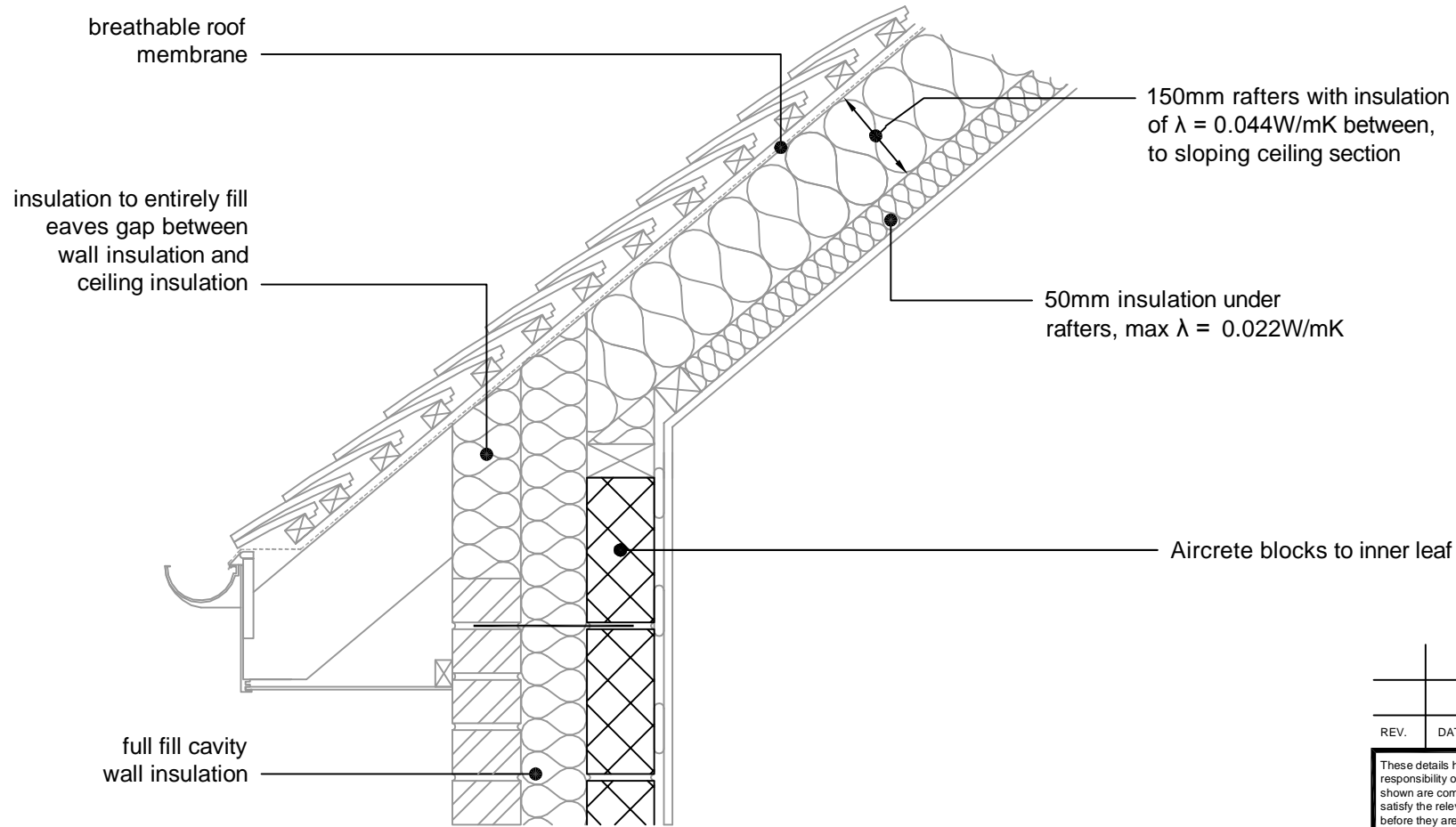
**H+H** H+H UK Limited  
 Technical Services Dept.  
 Celcon House  
 Ightham, Sevenoaks  
 Kent, TN15 9HZ.  
 Tel +44 (0)1732 880580  
 Fax +44 (0)1732 887013  
 E-mail [tsd@hhcelcon.co.uk](mailto:tsd@hhcelcon.co.uk)

TITLE External Masonry Cavity Wall,  
 Full Fill - Pitched Roof, Eaves - Insulation  
 At Rafter Level, Unventilated Rafter Void

DWG No. HH-FF-13

DRAWN BY SJB CHECKED BY AHR

DATE Feb 2013 SCALE 1:100 @ A4 REV.NO. B



For  $\Psi$  values applicable to this detail, see LABC Registered Construction Details E11MCFF4 - 6.

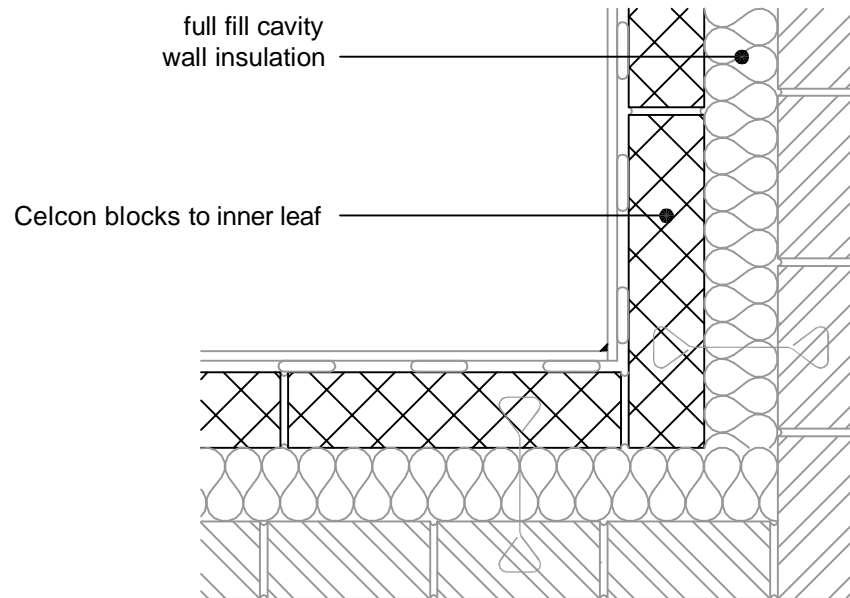
REV.	DATE.	DESCRIPTION.	BY.

These details have been produced for guidance only. It is the responsibility of the building designer to ensure that the details shown are compatible with the overall building design and will satisfy the relevant parts of the Building Regulations applicable before they are adopted into the project design.

**H+H** H+H UK Limited  
 Technical Services Dept.  
 Celcon House  
 Ightham, Sevenoaks  
 Kent, TN15 9HZ.  
 Tel +44 (0)1732 880580  
 Fax +44 (0)1732 887013  
 E-mail tsd@hhcelcon.co.uk

TITLE External Masonry Cavity Wall, Full Fill - Pitched Roof, Eaves - Insulation At Rafter Level, Unventilated Rafter Void			
DWG No.		HH-FF-23	
DRAWN BY		CHECKED BY	
SJB		AHR	
DATE	SCALE	REV.NO.	
Nov 2014	1:100 @ A4	0	





For  $\Psi$  values applicable to this detail,  
 see Constructive Details CD0035  
 or  
 LABC Registered Construction  
 Details E16MCFF4 - 6.

REV.	DATE.	DESCRIPTION.	BY.
A	11/2014	LABC NOTE ADDED	SJB

These details have been produced for guidance only. It is the responsibility of the building designer to ensure that the details shown are compatible with the overall building design and will satisfy the relevant parts of the Building Regulations applicable before they are adopted into the project design.

**H+H** H+H UK Limited  
 Technical Services Dept.  
 Celcon House  
 Ightham, Sevenoaks  
 Kent, TN15 9HZ.  
 Tel +44 (0)1732 880580  
 Fax +44 (0)1732 887013  
 E-mail tsd@hhcelcon.co.uk

TITLE  
 External Masonry Cavity Wall,  
 Full Fill - Normal Corner

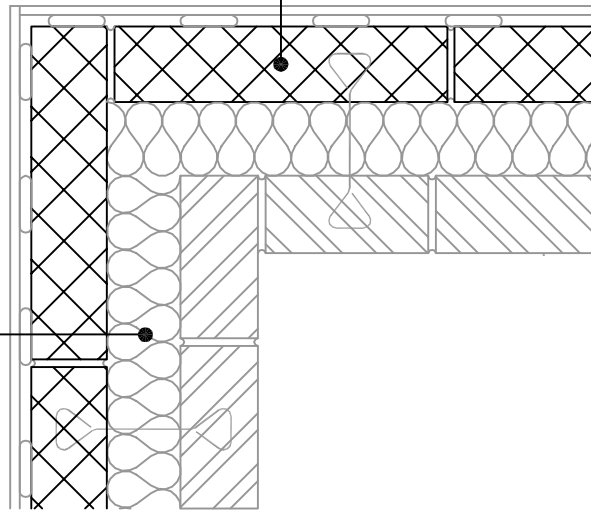
DWG No. HH-FF-14

DRAWN BY SJB CHECKED BY AHR

DATE Feb 2013 SCALE 1:100 @ A4 REV.NO. A

Celcon blocks to inner leaf

full fill cavity  
wall insulation



For  $\Psi$  values applicable to this detail,  
see Constructive Details CD0036  
or  
LABC Registered Construction  
Details E17MCFF4 - 6.

REV.	DATE.	DESCRIPTION.	BY.
A	11/2014	LABC NOTE ADDED	SJB

These details have been produced for guidance only. It is the responsibility of the building designer to ensure that the details shown are compatible with the overall building design and will satisfy the relevant parts of the Building Regulations applicable before they are adopted into the project design.

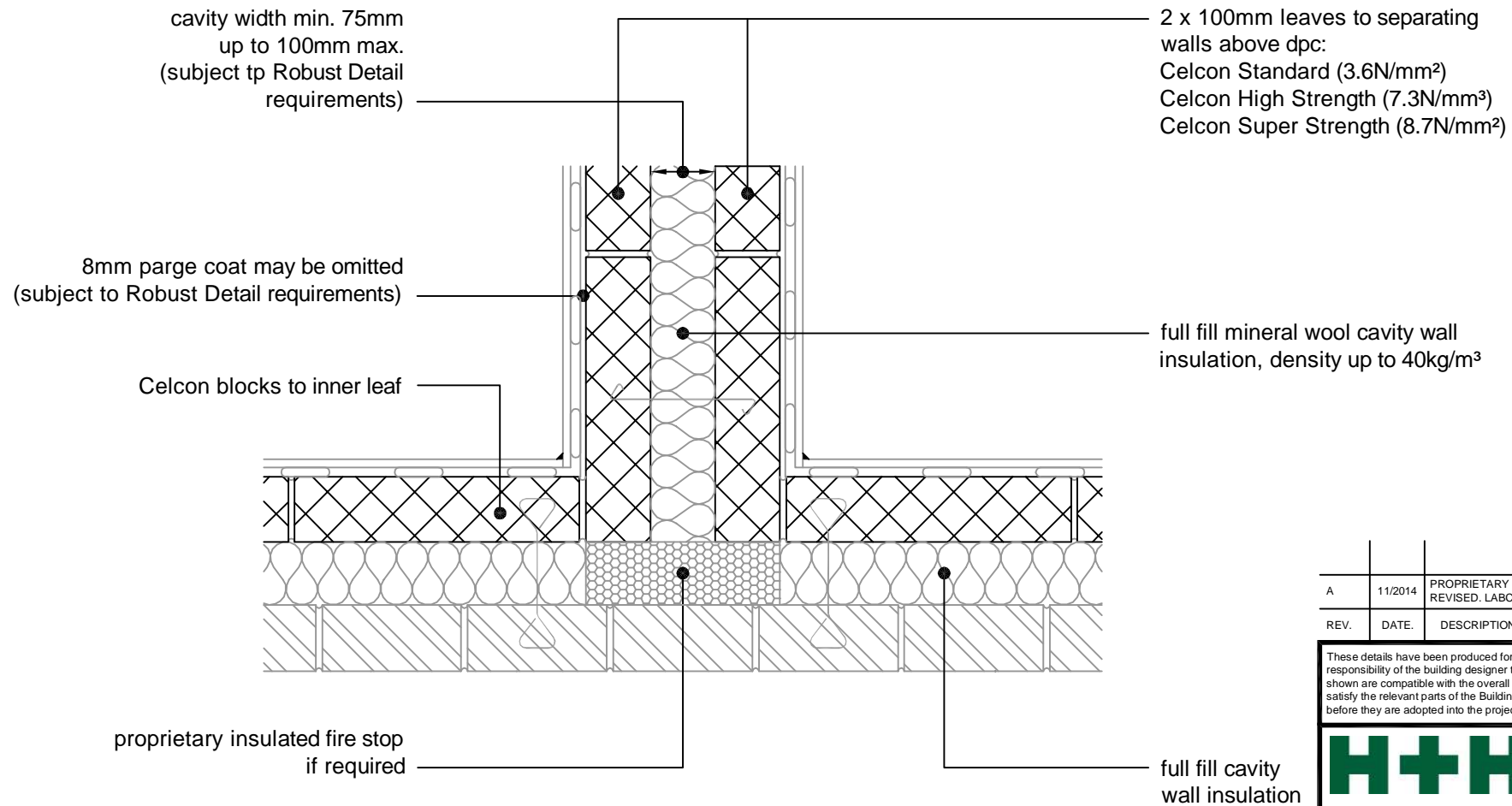
**H+H** H+H UK Limited  
Technical Services Dept.  
Celcon House  
Ightham, Sevenoaks  
Kent, TN15 9HZ.  
Tel +44 (0)1732 880580  
Fax +44 (0)1732 887013  
E-mail tsd@hhcelcon.co.uk

TITLE  
External Masonry Cavity Wall,  
Full Fill - Inverted Corner

DWG No. HH-FF-15

DRAWN BY SJB CHECKED BY AHR

DATE Feb 2013 SCALE 1:100 @ A4 REV.NO. A



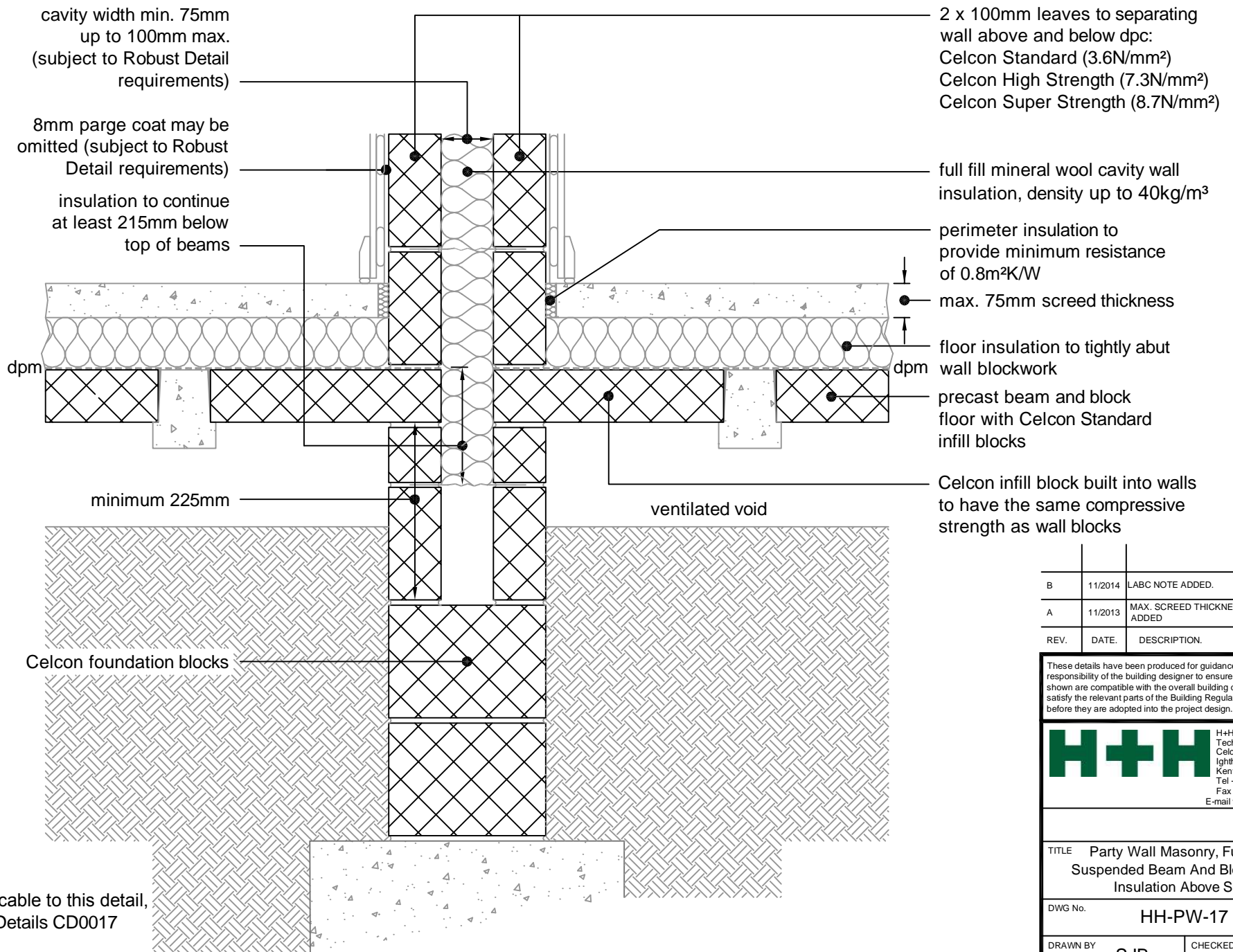
For  $\Psi$  values applicable to this detail,  
 see Constructive Details CD0037  
 or  
 LABC Registered Construction  
 Details E18MCFF7 - 10.

A	11/2014	PROPRIETARY FIRE STOP NOTE REVISED. LABC NOTE ADDED.	SJB
REV.	DATE.	DESCRIPTION.	BY.

These details have been produced for guidance only. It is the responsibility of the building designer to ensure that the details shown are compatible with the overall building design and will satisfy the relevant parts of the Building Regulations applicable before they are adopted into the project design.

**H+H** H+H UK Limited  
 Technical Services Dept.  
 Celcon House  
 Ightham, Sevenoaks  
 Kent, TN15 9HZ.  
 Tel +44 (0)1732 880580  
 Fax +44 (0)1732 887013  
 E-mail tsd@hhcelcon.co.uk

TITLE External Masonry Cavity Wall, Full Fill - Party Wall Between Dwellings		
DWG No. HH-FF-16		
DRAWN BY SJB	CHECKED BY AHR	
DATE Feb 2013	SCALE 1:100 @ A4	REV.NO. A



B	11/2014	LABC NOTE ADDED.	SJB
A	11/2013	MAX. SCREED THICKNESS NOTE ADDED	SJB
REV.	DATE.	DESCRIPTION.	BY.

These details have been produced for guidance only. It is the responsibility of the building designer to ensure that the details shown are compatible with the overall building design and will satisfy the relevant parts of the Building Regulations applicable before they are adopted into the project design.

**H+H** H+H UK Limited  
 Technical Services Dept.  
 Celcon House  
 Ightham, Sevenoaks  
 Kent, TN15 9HZ.  
 Tel +44 (0)1732 880580  
 Fax +44 (0)1732 887013  
 E-mail tsd@hhcelcon.co.uk

TITLE Party Wall Masonry, Full Fill -  
 Suspended Beam And Block Floor,  
 Insulation Above Slab

DWG No. HH-PW-17

DRAWN BY SJB CHECKED BY AHR

DATE Nov 2012 SCALE 1:100 @ A4 REV.NO. B

For  $\Psi$  values applicable to this detail,  
 see Constructive Details CD0017  
 or  
 LABC Registered Construction  
 Details P1PCFF1 - 2.

cavity width min. 75mm  
up to 100mm max.  
(subject to Robust Detail  
requirements)

8mm parge coat may be  
omitted (subject to Robust  
Detail requirements)

full fill mineral wool cavity wall  
insulation, density up to 40kg/m<sup>3</sup>

2 x 100mm leaves to separating  
wall above and below dpc:  
Celcon Standard (3.6N/mm<sup>2</sup>)  
Celcon High Strength (7.3N/mm<sup>2</sup>)  
Celcon Super Strength (8.7N/mm<sup>2</sup>)

base course incorporating  
lapped dpm and dpc

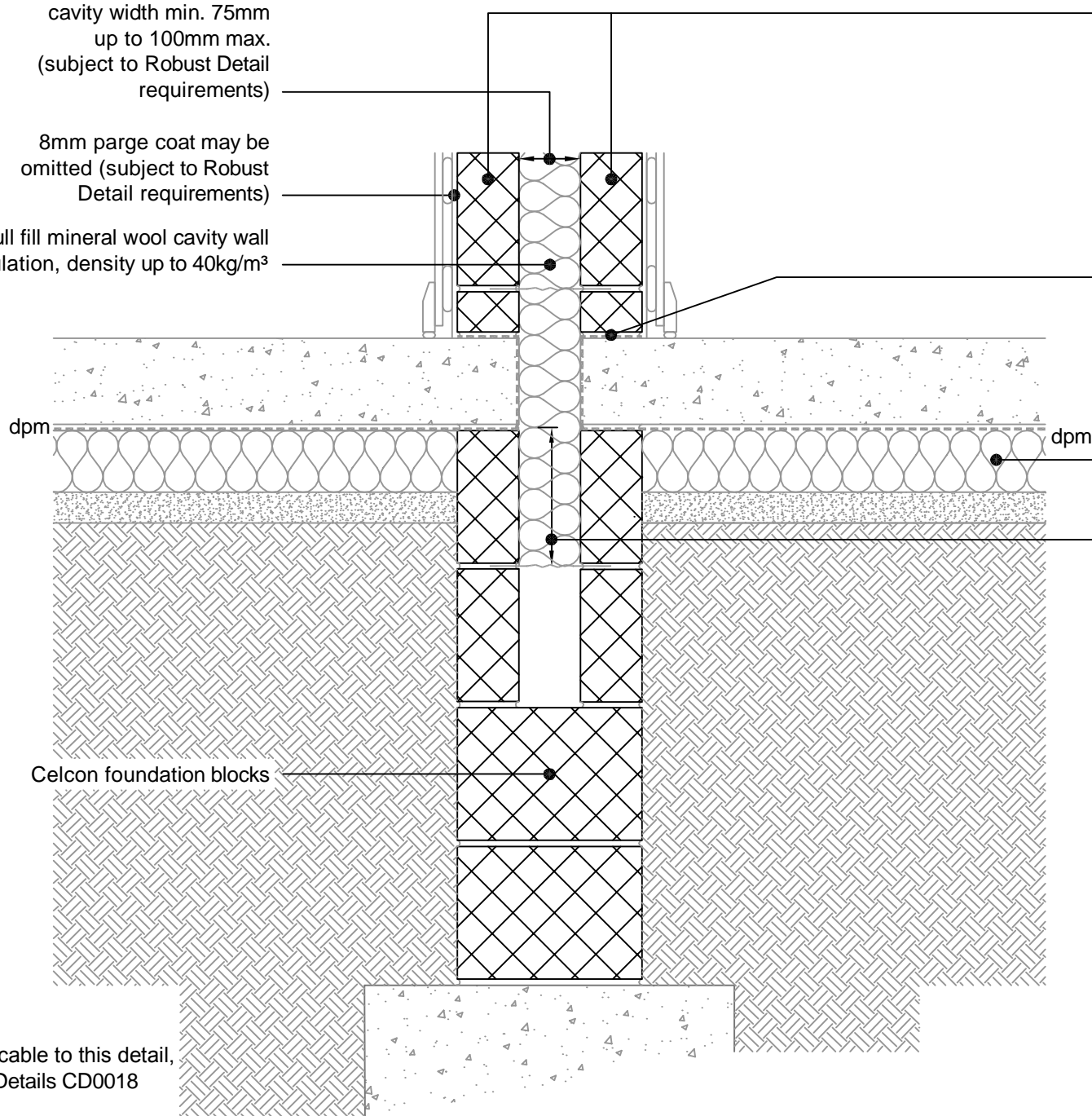
floor insulation to tightly abut  
wall blockwork

insulation to continue  
at least 215mm below  
underside of slab

dpm

dpm

Celcon foundation blocks



B	11/2014	MAX. FLOOR THICKNESS NOTE REMOVED. LABC REFERENCE ADDED.	SJB
A	11/2013	MAX. SCREED THICKNESS NOTE ADDED	SJB
REV.	DATE.	DESCRIPTION.	BY.

These details have been produced for guidance only. It is the responsibility of the building designer to ensure that the details shown are compatible with the overall building design and will satisfy the relevant parts of the Building Regulations applicable before they are adopted into the project design.

**H+H** H+H UK Limited  
Technical Services Dept.  
Celcon House  
Ightham, Sevenoaks  
Kent, TN15 9HZ.  
Tel +44 (0)1732 880580  
Fax +44 (0)1732 887013  
E-mail tsd@hhcelcon.co.uk

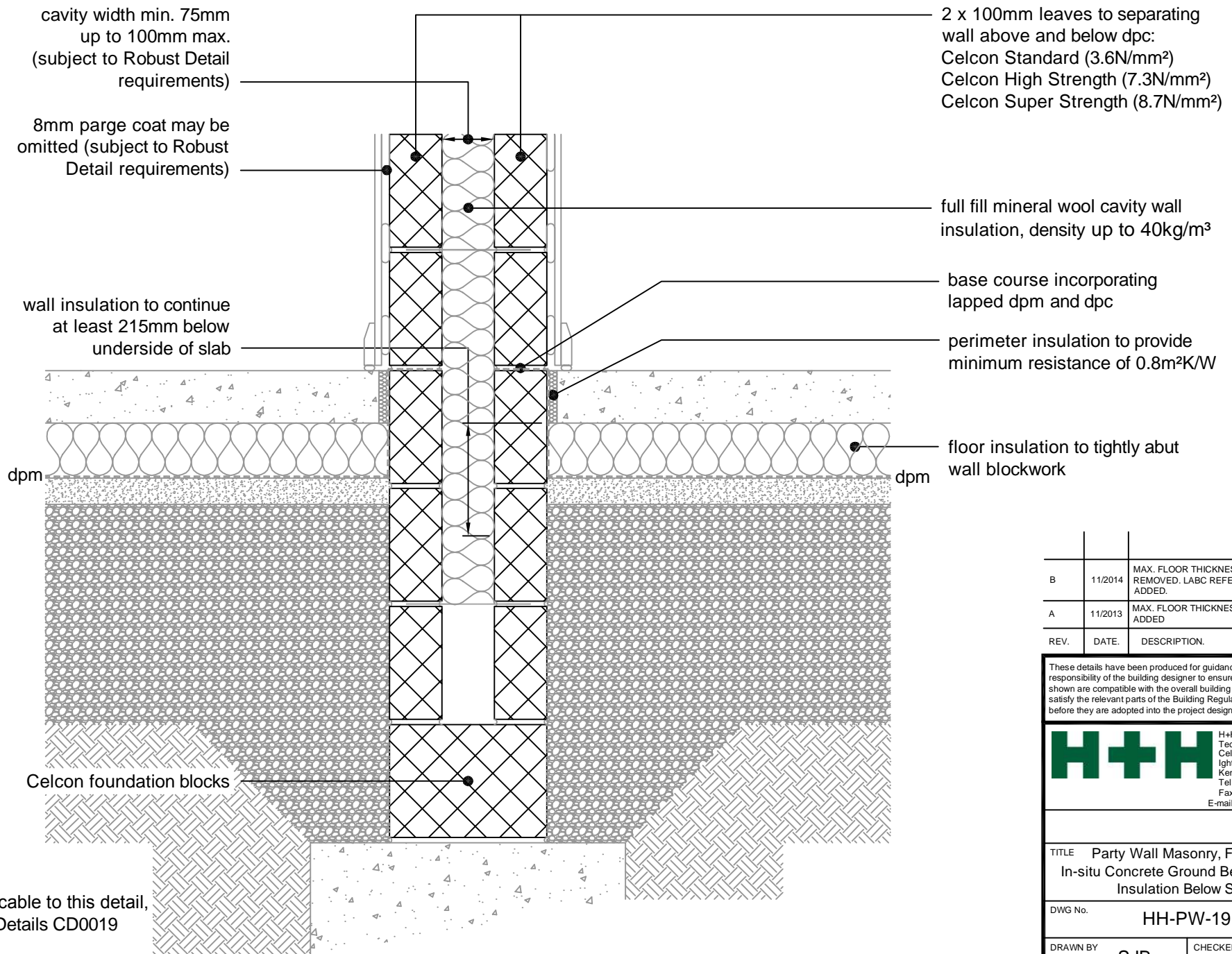
TITLE Party Wall Masonry, Full Fill -  
Suspended Concrete Floor,  
Insulation Below Slab

DWG No. HH-PW-18

DRAWN BY SJB CHECKED BY AHR

DATE Nov 2012 SCALE 1:100 @ A4 REV.NO. B

For  $\Psi$  values applicable to this detail,  
see Constructive Details CD0018  
or  
LABC Registered Construction  
Details P1PCFF3 - 4.



For  $\Psi$  values applicable to this detail, see Constructive Details CD0019 or LABC Registered Construction Details P1PCFF5 - 6.

B	11/2014	MAX. FLOOR THICKNESS NOTE REMOVED. LABC REFERENCE ADDED.	SJB
A	11/2013	MAX. FLOOR THICKNESS NOTE ADDED.	SJB
REV.	DATE.	DESCRIPTION.	BY.

These details have been produced for guidance only. It is the responsibility of the building designer to ensure that the details shown are compatible with the overall building design and will satisfy the relevant parts of the Building Regulations applicable before they are adopted into the project design.

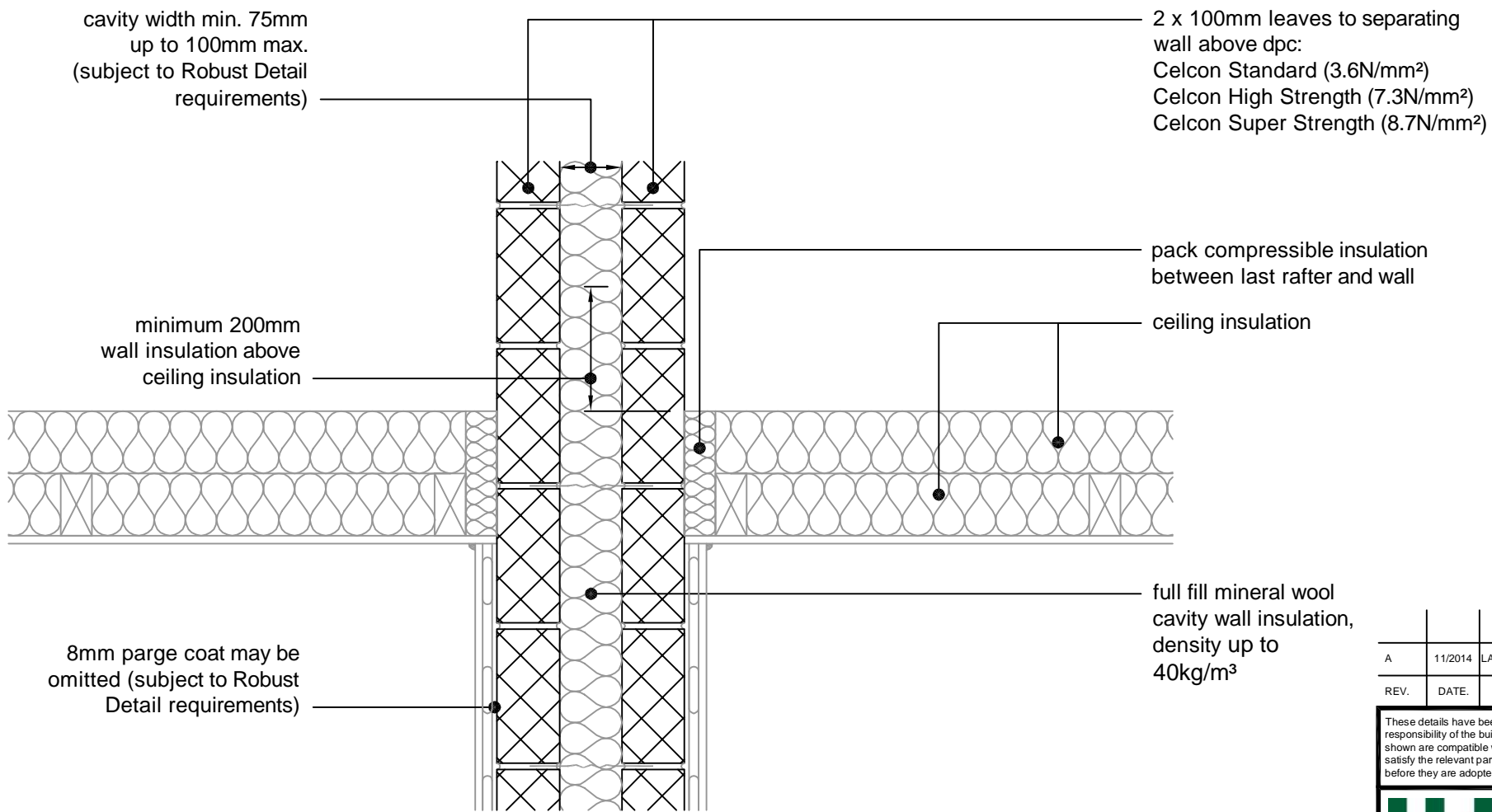
**H+H** H+H UK Limited  
 Technical Services Dept.  
 Celcon House  
 Ightham, Sevenoaks  
 Kent, TN15 9HZ.  
 Tel +44 (0)1732 880580  
 Fax +44 (0)1732 887013  
 E-mail tsd@hhcelcon.co.uk

TITLE Party Wall Masonry, Full Fill - In-situ Concrete Ground Bearing Floor, Insulation Below Slab

DWG No. HH-PW-19

DRAWN BY SJB CHECKED BY AHR

DATE Nov 2012 SCALE 1:100 @ A4 REV.NO. B



For  $\Psi$  values applicable to this detail,  
 see Constructive Details CD0020  
 or  
 LABC Registered Construction  
 Details P4PCFF1 - 2.

A	11/2014	LABC NOTE ADDED	SJB
REV.	DATE.	DESCRIPTION.	BY.

These details have been produced for guidance only. It is the responsibility of the building designer to ensure that the details shown are compatible with the overall building design and will satisfy the relevant parts of the Building Regulations applicable before they are adopted into the project design.

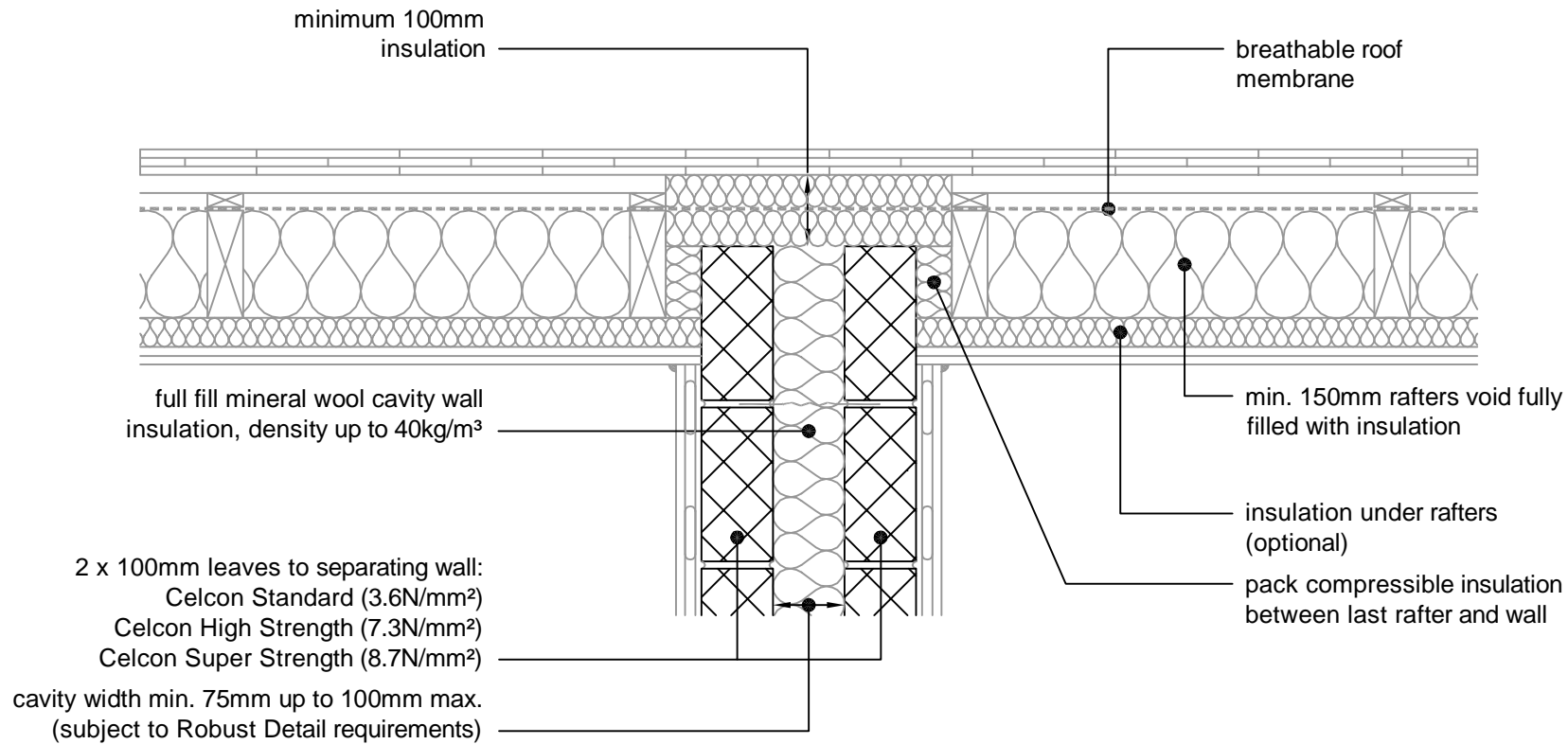
**H+H** H+H UK Limited  
 Technical Services Dept.  
 Celcon House  
 Ightham, Sevenoaks  
 Kent, TN15 9HZ.  
 Tel +44 (0)1732 880580  
 Fax +44 (0)1732 887013  
 E-mail tsd@hhcelcon.co.uk

TITLE Party Wall Masonry, Full Fill -  
 Roof, Insulated At Ceiling Level,  
 Ventilated Loft

DWG No. HH-PW-20

DRAWN BY SJB CHECKED BY AHR

DATE Nov 2012 SCALE 1:100 @ A4 REV.NO. A



B	11/2014	LABC NOTE ADDED	SJB
A	11/2013	RAFTERS INSULATION THICKNESS NOTE ADDED	SJB
REV.	DATE.	DESCRIPTION.	BY.

These details have been produced for guidance only. It is the responsibility of the building designer to ensure that the details shown are compatible with the overall building design and will satisfy the relevant parts of the Building Regulations applicable before they are adopted into the project design.

**H+H** H+H UK Limited  
 Technical Services Dept.  
 Celcon House  
 Ightham, Sevenoaks  
 Kent, TN15 9HZ.  
 Tel +44 (0)1732 880580  
 Fax +44 (0)1732 887013  
 E-mail tsd@hhcelcon.co.uk

TITLE Party Wall Masonry, Full Fill - Roof, Insulated At Rafter Level, Unventilated Rafter Void		
DWG No. HH-PW-21		
DRAWN BY SJB	CHECKED BY AHR	
DATE Nov 2012	SCALE 1:100 @ A4	REV.NO. B

For  $\Psi$  values applicable to this detail, see Constructive Details CD0021 or LABC Registered Construction Details P5PCFF1 - 2.