

Detail Ref.	Detail Title
HH-PF-01	External Masonry Cavity Wall, Partial-Fill - Suspended Beam And Block Floor, Insulation Above Slab
HH-PF-02	External Masonry Cavity Wall, Partial-Fill - Suspended In-Situ Concrete Floor, Insulation Below Slab
HH-PF-03	External Masonry Cavity Wall, Partial-Fill - Concrete Ground Bearing Floor, Insulation Below Slab
HH-PF-04	External Masonry Cavity Wall, Partial-Fill - Independent Lintel
HH-PF-05	External Masonry Cavity Wall, Partial-Fill - Steel Lintel, Perforated Base Plate, (Insulated Soffit)
HH-PF-22	External Masonry Cavity Wall, Partial-Fill - Steel Lintel, Open Back (no continuous base plate)
HH-PF-06	External Masonry Cavity Wall, Partial-Fill - Sill
HH-PF-07	External Masonry Cavity Wall, Partial-Fill - Jamb
HH-PF-08	External Masonry Cavity Wall, Partial-Fill - Intermediate Timber Floor Within A Dwelling
HH-PF-09	External Masonry Cavity Wall, Partial-Fill - Precast Concrete Separating Floor Between Dwellings
HH-PF-10	External Masonry Cavity Wall, Partial-Fill - Pitched Roof, Gable, Insulation At Ceiling Level, Ventilated Loft
HH-PF-11	External Masonry Cavity Wall, Partial-Fill - Pitched Roof, Gable, Insulation At Rafter Level, Unventilated Rafter Void
HH-PF-12	External Masonry Cavity Wall, Partial-Fill - Pitched Roof, Eaves, Insulation At Ceiling Level, Ventilated Loft
HH-PF-13	External Masonry Cavity Wall, Partial-Fill - Pitched Roof, Eaves, Insulation At Rafter Level, Unventilated Rafter Void
HH-PF-23	External Masonry Cavity Wall, Partial-Fill - Pitched Roof, Eaves - Insulation At Rafter Level, Unventilated Rafter Void
HH-PF-14	External Masonry Cavity Wall, Partial-Fill - Normal Corner
HH-PF-15	External Masonry Cavity Wall, Partial-Fill - Inverted Corner
HH-PF-16	External Masonry Cavity Wall, Partial-Fill - Party Wall Between Dwellings
HH-PW-17	Party Wall Masonry, Full Fill - Suspended Beam And Block Floor, Insulation Above Slab
HH-PW-18	Party Wall Masonry, Full Fill - Suspended Concrete Floor, Insulation Below Slab
HH-PW-19	Party Wall Masonry, Full Fill - In-Situ Concrete Ground Bearing Floor, Insulation Below Slab
HH-PW-20	Party Wall Masonry, Full Fill - Roof, Insulation At Ceiling Level, Ventilated Loft
HH-PW-21	Party Wall Masonry, Full Fill - Roof, Insulation At Rafter Level, Unventilated Rafter Void

REV.	DATE.	DESCRIPTION.	BY.
A	11/2014	HH-PF-22 & HH-PF-23 ADDED	SJB

These details have been produced for guidance only. It is the responsibility of the building designer to ensure that the details shown are compatible with the overall building design and will satisfy the relevant parts of the Building Regulations applicable before they are adopted into the project design.

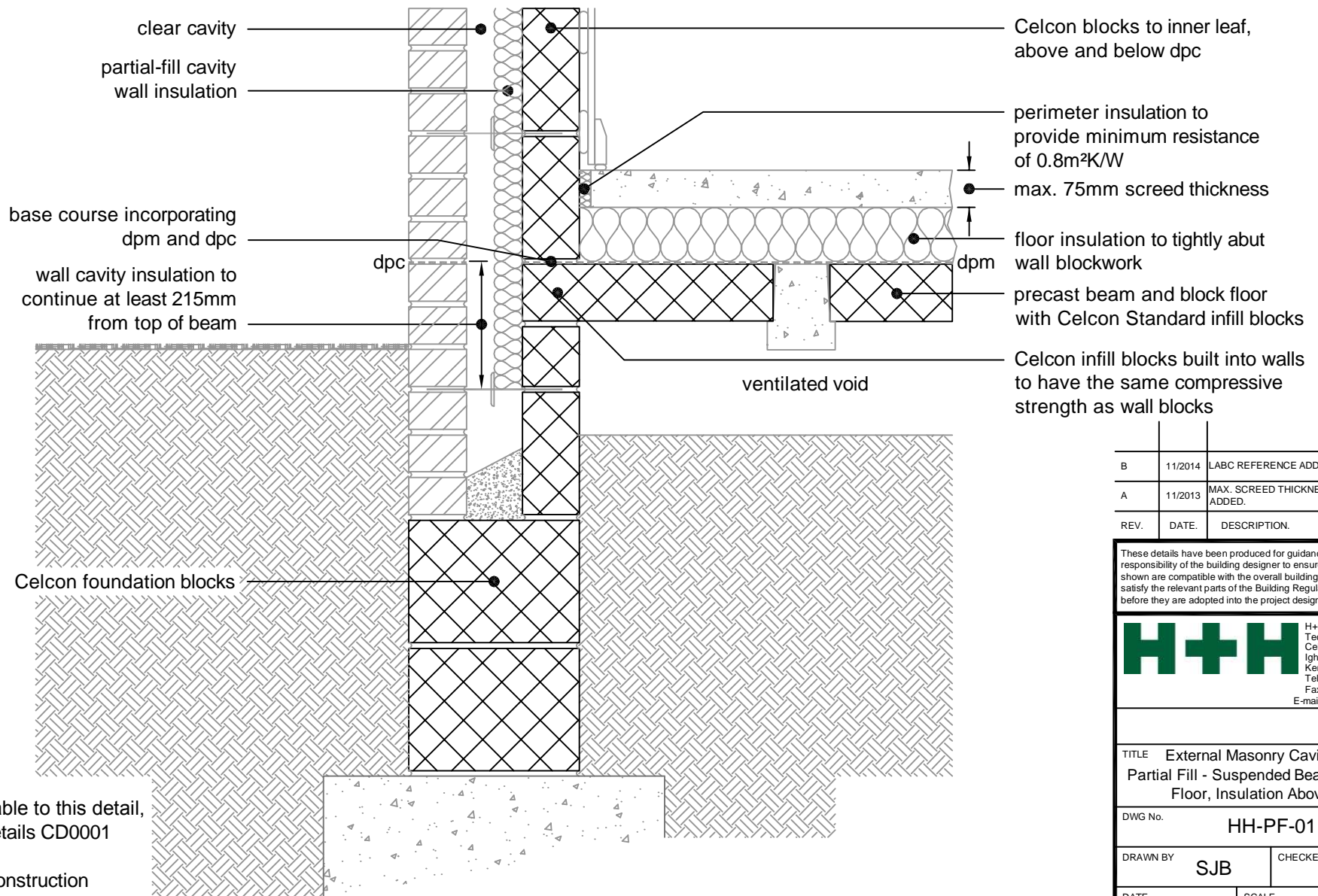


TITLE **Standard Junction Details
(partial Fill)**

DWG No. **INDEX**

DRAWN BY **SJB** CHECKED BY **AHR**

DATE **Nov 2012** SCALE **N.T.S.** REV.NO. **A**



For Ψ values applicable to this detail, see Constructive Details CD0001 or LABC Registered Construction Details E5MCPF16 - 21.

REV.	DATE	DESCRIPTION	BY
B	11/2014	LABC REFERENCE ADDED	SJB
A	11/2013	MAX. SCREED THICKNESS NOTE ADDED.	SJB

These details have been produced for guidance only. It is the responsibility of the building designer to ensure that the details shown are compatible with the overall building design and will satisfy the relevant parts of the Building Regulations applicable before they are adopted into the project design.

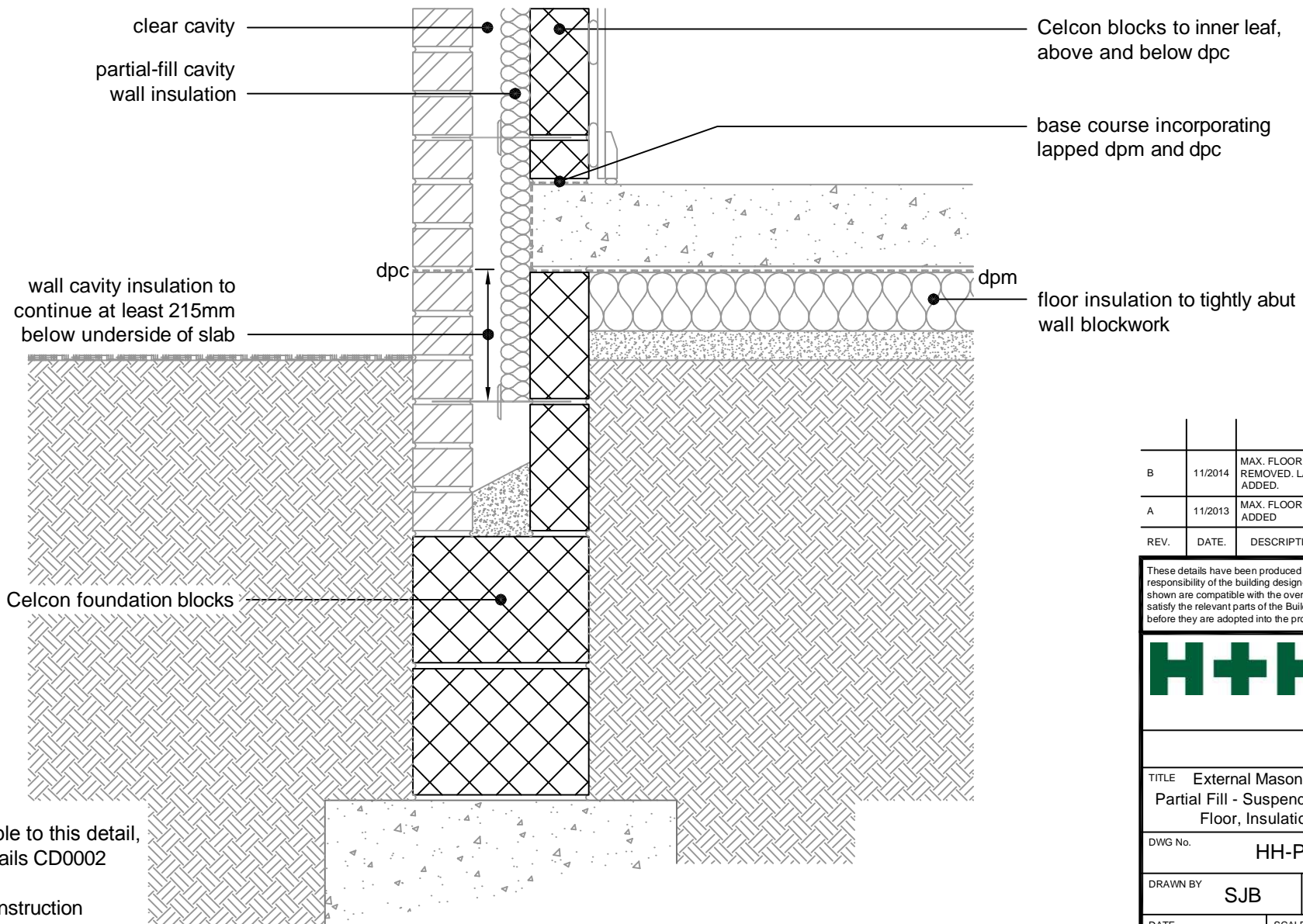
H+H H+H UK Limited
 Technical Services Dept.
 Celcon House
 Ightham, Sevenoaks
 Kent, TN15 9HZ.
 Tel +44 (0)1732 880580
 Fax +44 (0)1732 887013
 E-mail tsd@hhcelcon.co.uk

TITLE External Masonry Cavity Wall,
 Partial Fill - Suspended Beam And Block
 Floor, Insulation Above Slab

DWG No. HH-PF-01

DRAWN BY SJB CHECKED BY AHR

DATE Nov 2012 SCALE 1:100 @ A4 REV.NO. B



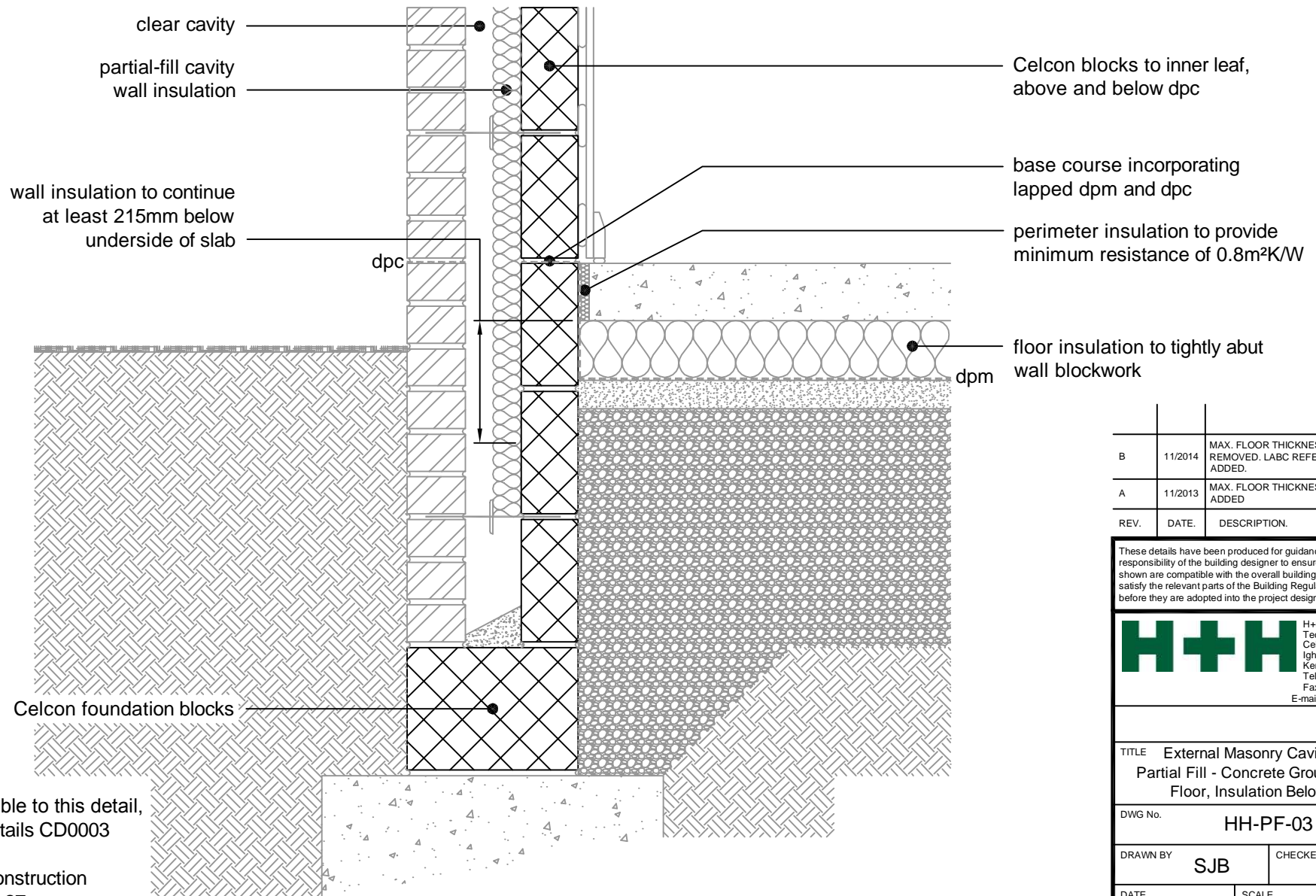
For Ψ values applicable to this detail,
 see Constructive Details CD0002
 or
 LABC Registered Construction
 Details E5MCPF28 - 33.

B	11/2014	MAX. FLOOR THICKNESS NOTE REMOVED. LABC REFERENCE ADDED.	SJB
A	11/2013	MAX. FLOOR THICKNESS NOTE ADDED.	SJB
REV.	DATE.	DESCRIPTION.	BY.

These details have been produced for guidance only. It is the responsibility of the building designer to ensure that the details shown are compatible with the overall building design and will satisfy the relevant parts of the Building Regulations applicable before they are adopted into the project design.

H+H H+H UK Limited
 Technical Services Dept.
 Celcon House
 Ightham, Sevenoaks
 Kent, TN15 9HZ.
 Tel +44 (0)1732 880580
 Fax +44 (0)1732 887013
 E-mail tsd@hhcelcon.co.uk

TITLE External Masonry Cavity Wall, Partial Fill - Suspended In-Situ Concrete Floor, Insulation Below Slab		
DWG No. HH-PF-02		
DRAWN BY	SJB	CHECKED BY AHR
DATE	Nov 2012	SCALE 1:100 @ A4
REV.NO.	B	



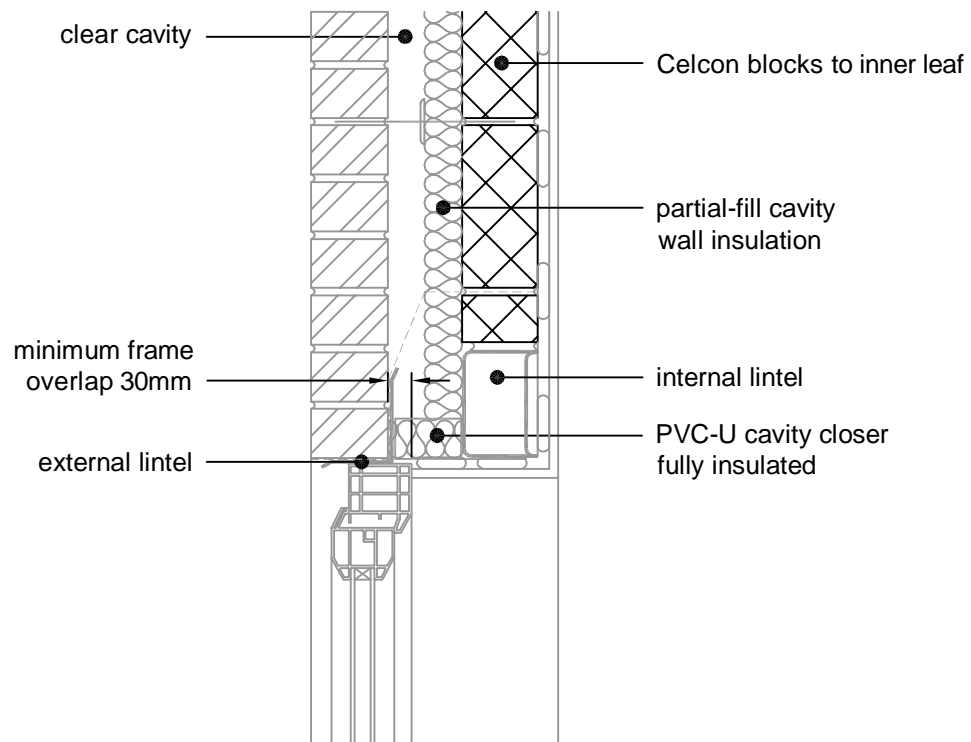
For Ψ values applicable to this detail, see Constructive Details CD0003 or LABC Registered Construction Details E5MCPF22 - 27.

REV.	DATE.	DESCRIPTION.	BY.
B	11/2014	MAX. FLOOR THICKNESS NOTE REMOVED. LABC REFERENCE ADDED.	SJB
A	11/2013	MAX. FLOOR THICKNESS NOTE ADDED.	SJB

These details have been produced for guidance only. It is the responsibility of the building designer to ensure that the details shown are compatible with the overall building design and will satisfy the relevant parts of the Building Regulations applicable before they are adopted into the project design.

H+H H+H UK Limited
 Technical Services Dept.
 Celcon House
 Ightham, Sevenoaks
 Kent, TN15 9HZ.
 Tel +44 (0)1732 880580
 Fax +44 (0)1732 887013
 E-mail tsd@hhcelcon.co.uk

TITLE External Masonry Cavity Wall, Partial Fill - Concrete Ground Bearing Floor, Insulation Below Slab			
DWG No.		HH-PF-03	
DRAWN BY		CHECKED BY	
SJB		AHR	
DATE	SCALE	REV.NO.	
Nov 2012	1:100 @ A4	B	



For Ψ values applicable to this detail,
 see Constructive Details CD0004
 or
 LABC Registered Construction
 Details E2MCPF4 - 6.

REV.	DATE	DESCRIPTION	BY.
A	11/2014	LABC NOTE ADDED	SJB

These details have been produced for guidance only. It is the responsibility of the building designer to ensure that the details shown are compatible with the overall building design and will satisfy the relevant parts of the Building Regulations applicable before they are adopted into the project design.

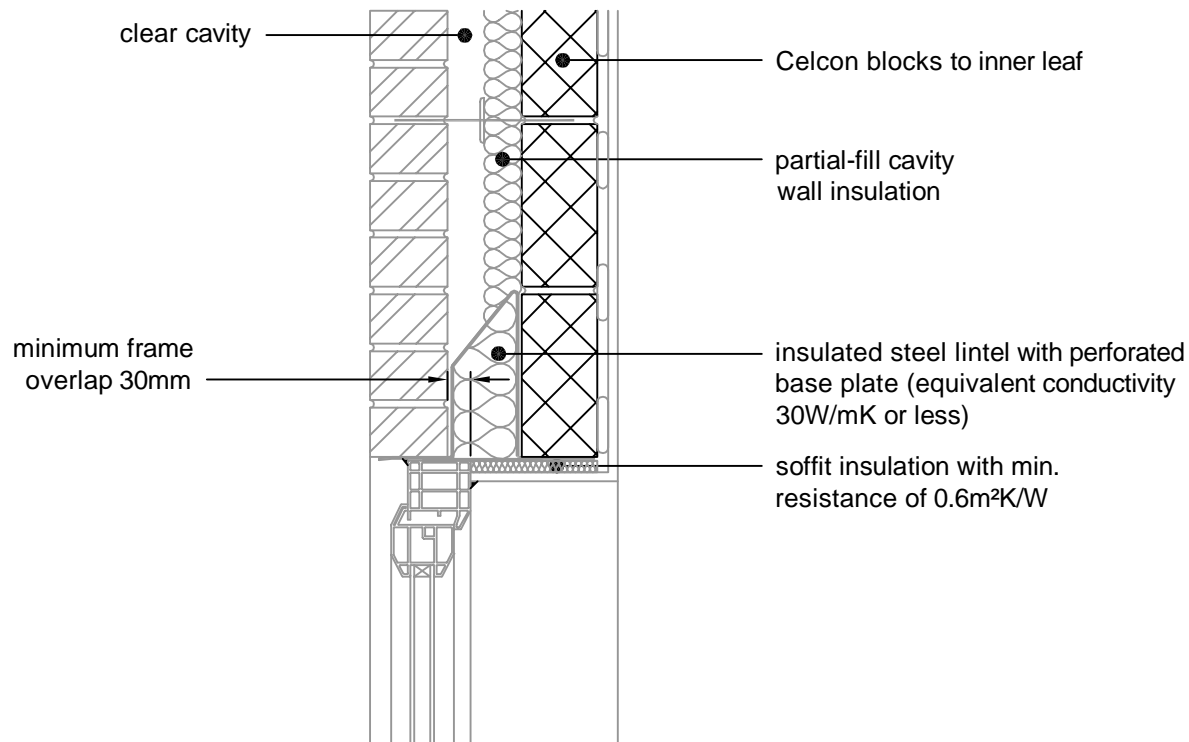
H+H H+H UK Limited
 Technical Services Dept.
 Celcon House
 Ightham, Sevenoaks
 Kent, TN15 9HZ.
 Tel +44 (0)1732 880580
 Fax +44 (0)1732 887013
 E-mail tsd@hhcelcon.co.uk

TITLE
 External Masonry Cavity Wall,
 Partial Fill - Independent Lintel

DWG No. HH-PF-04

DRAWN BY SJB CHECKED BY AHR

DATE Nov 2012 SCALE 1:100 @ A4 REV.NO. A



For Ψ values applicable to this detail,
see Constructive Details CD0005
or
LABC Registered Construction
Details E1MCPF4 - 6.

REV.	DATE.	DESCRIPTION.	BY.
A	11/2014	MAX. LINTEL HEIGHT NOTE REMOVED. LINTEL BASEPLATE ADDED. LABC REFERENCE ADDED	SJB

These details have been produced for guidance only. It is the responsibility of the building designer to ensure that the details shown are compatible with the overall building design and will satisfy the relevant parts of the Building Regulations applicable before they are adopted into the project design.

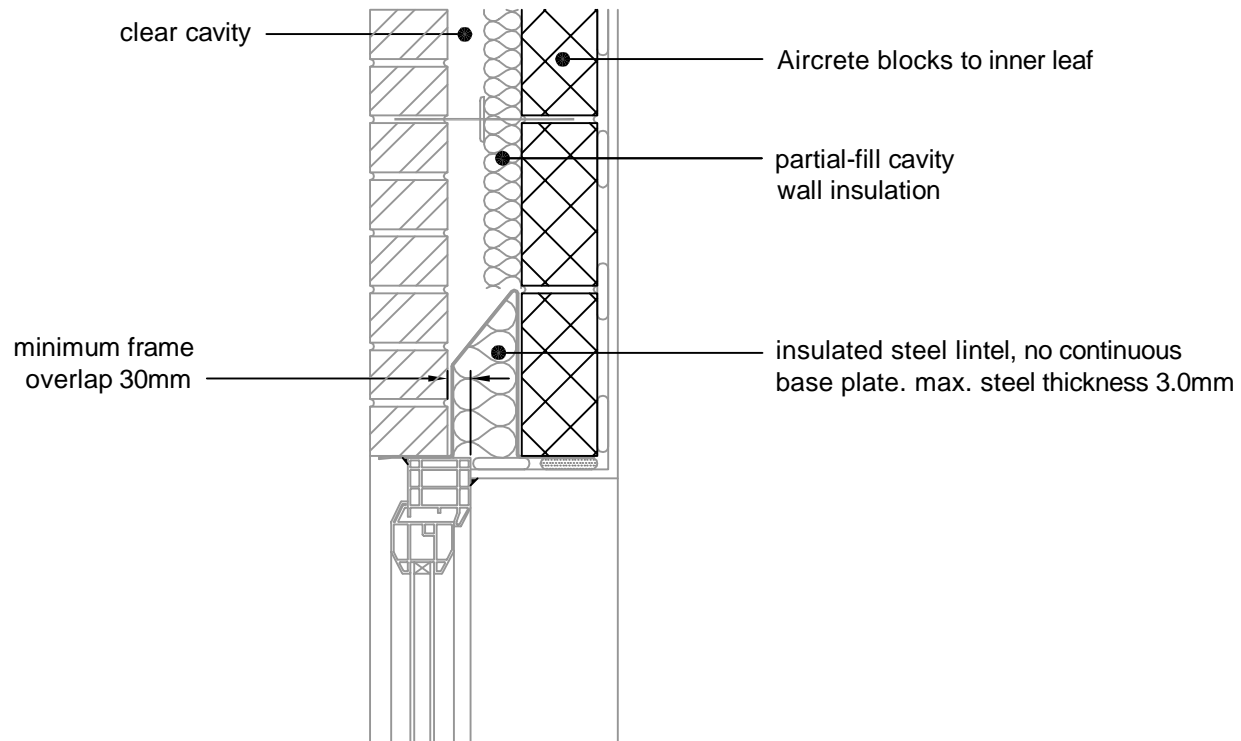
H+H H+H UK Limited
 Technical Services Dept.
 Celcon House
 Ightham, Sevenoaks
 Kent, TN15 9HZ.
 Tel +44 (0)1732 880580
 Fax +44 (0)1732 887013
 E-mail tsd@hhcelcon.co.uk

TITLE External Masonry Cavity Wall,
 Partial Fill - Steel Lintel, Perforated
 Base Plate, (Insulated Soffit)

DWG No. HH-PF-05

DRAWN BY SJB CHECKED BY AHR

DATE Nov 2012 SCALE 1:100 @ A4 REV.NO. A



For Ψ values applicable to this detail,
see LABC Registered Construction
Details E2MCPF7 - 9.

REV.	DATE.	DESCRIPTION.	BY.

These details have been produced for guidance only. It is the responsibility of the building designer to ensure that the details shown are compatible with the overall building design and will satisfy the relevant parts of the Building Regulations applicable before they are adopted into the project design.

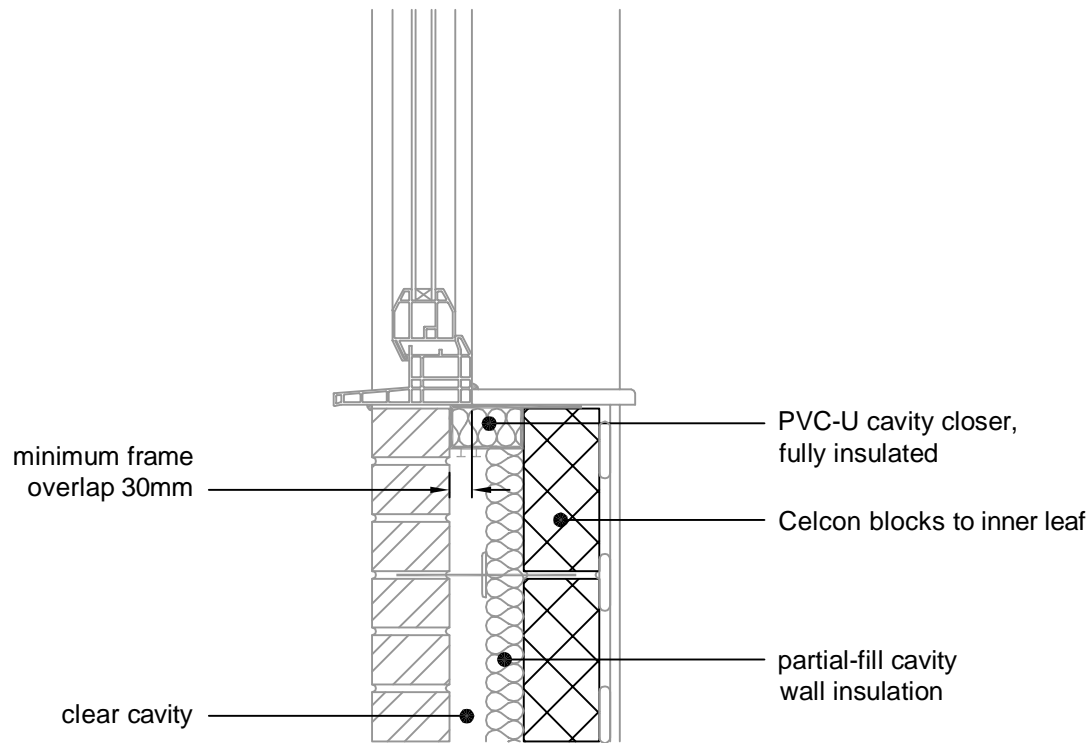
H+H H+H UK Limited
 Technical Services Dept.
 Celcon House
 Ightham, Sevenoaks
 Kent, TN15 9HZ.
 Tel +44 (0)1732 880580
 Fax +44 (0)1732 887013
 E-mail tsd@hhcelcon.co.uk

TITLE External Masonry Cavity Wall,
 Partial Fill - Steel Lintel, Open back
 (no continuous base plate)

DWG No. HH-PF-22

DRAWN BY SJB CHECKED BY AHR

DATE Nov 2014 SCALE 1:100 @ A4 REV.NO. 0



For Ψ values applicable to this detail,
 see Constructive Details CD0006
 or
 LABC Registered Construction
 Details E3MCPF4 - 6.

REV.	DATE.	DESCRIPTION.	BY.
A	11/2014	LABC NOTE ADDED	SJB

These details have been produced for guidance only. It is the responsibility of the building designer to ensure that the details shown are compatible with the overall building design and will satisfy the relevant parts of the Building Regulations applicable before they are adopted into the project design.

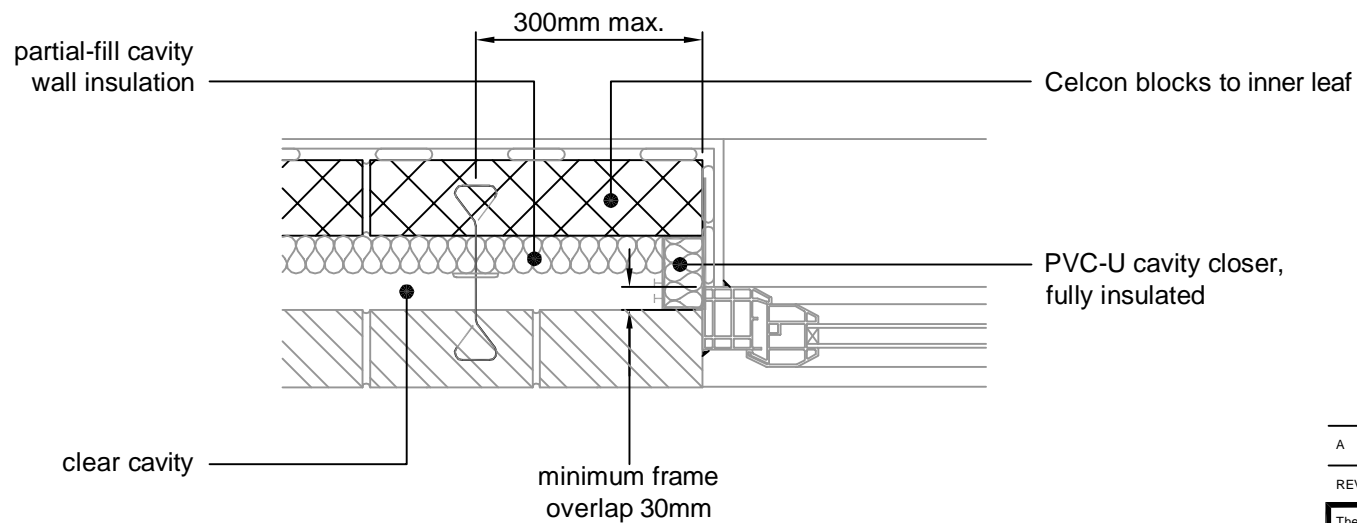
H+H H+H UK Limited
 Technical Services Dept.
 Celcon House
 Ightham, Sevenoaks
 Kent, TN15 9HZ.
 Tel +44 (0)1732 880580
 Fax +44 (0)1732 887013
 E-mail tsd@hhcelcon.co.uk

TITLE
 External Masonry Cavity Wall,
 Partial Fill - Sill

DWG No. HH-PF-06

DRAWN BY SJB CHECKED BY AHR

DATE Nov 2012 SCALE 1:100 @ A4 REV.NO. A



For Ψ values applicable to this detail,
 see Constructive Details CD0007
 or
 LABC Registered Construction
 Details E4MCPF4 - 6.

A	11/2014	LABC NOTE ADDED	SJB
REV.	DATE.	DESCRIPTION.	BY.

These details have been produced for guidance only. It is the responsibility of the building designer to ensure that the details shown are compatible with the overall building design and will satisfy the relevant parts of the Building Regulations applicable before they are adopted into the project design.

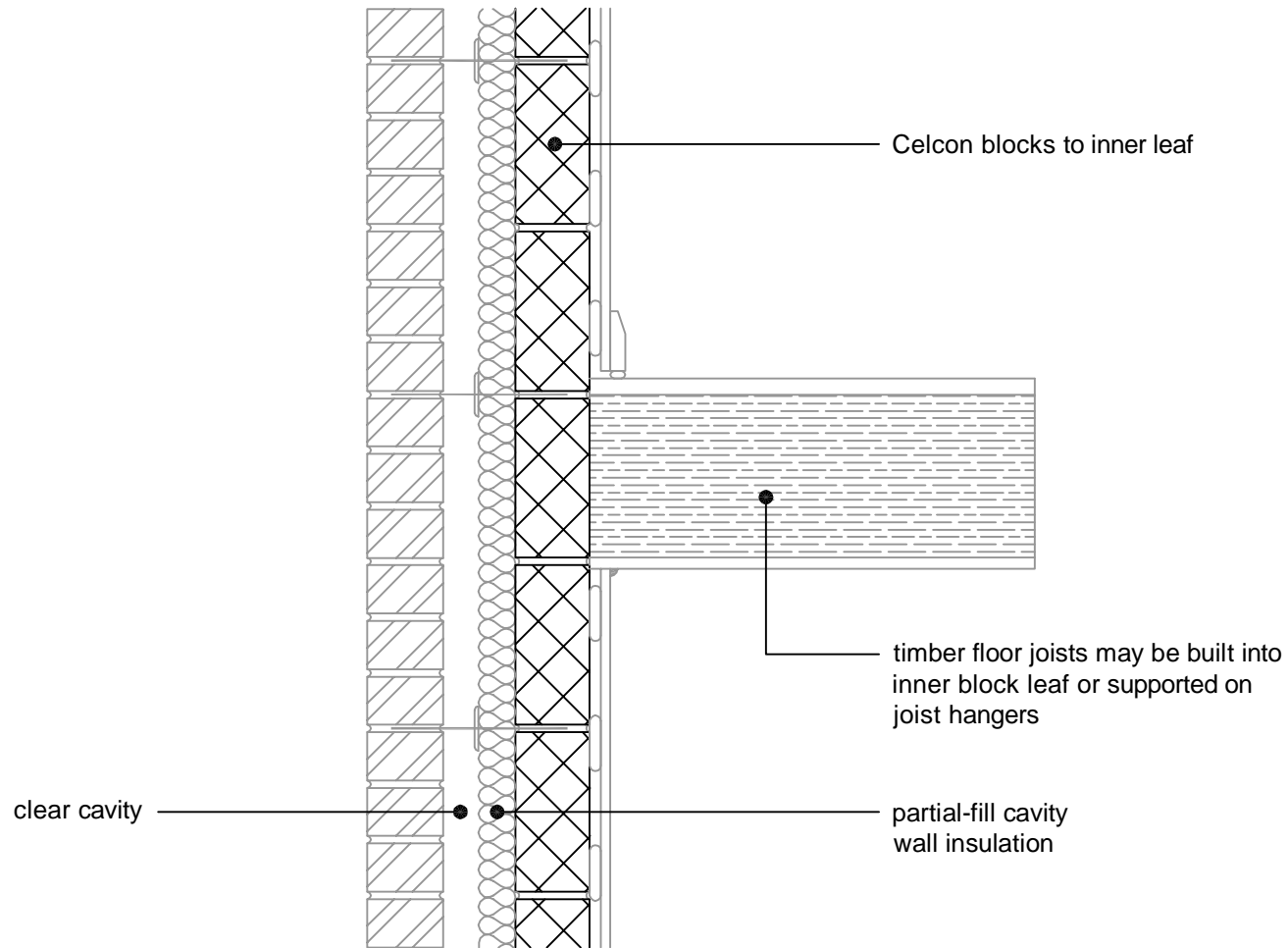
H+H H+H UK Limited
 Technical Services Dept.
 Celcon House
 Ightham, Sevenoaks
 Kent, TN15 9HZ.
 Tel +44 (0)1732 880580
 Fax +44 (0)1732 887013
 E-mail tsd@hhcelcon.co.uk

TITLE
**External Masonry Cavity Wall,
 Partial Fill - Jamb**

DWG No. **HH-PF-07**

DRAWN BY **SJB** CHECKED BY **AHR**

DATE **Nov 2012** SCALE **1:100 @ A4** REV.NO. **A**



For Ψ values applicable to this detail,
 see Constructive Details CD0008
 or
 LABC Registered Construction
 Details E6MCPF4 - 6.

A	11/2014	LABC NOTE ADDED	SJB
REV.	DATE.	DESCRIPTION.	BY.

These details have been produced for guidance only. It is the responsibility of the building designer to ensure that the details shown are compatible with the overall building design and will satisfy the relevant parts of the Building Regulations applicable before they are adopted into the project design.

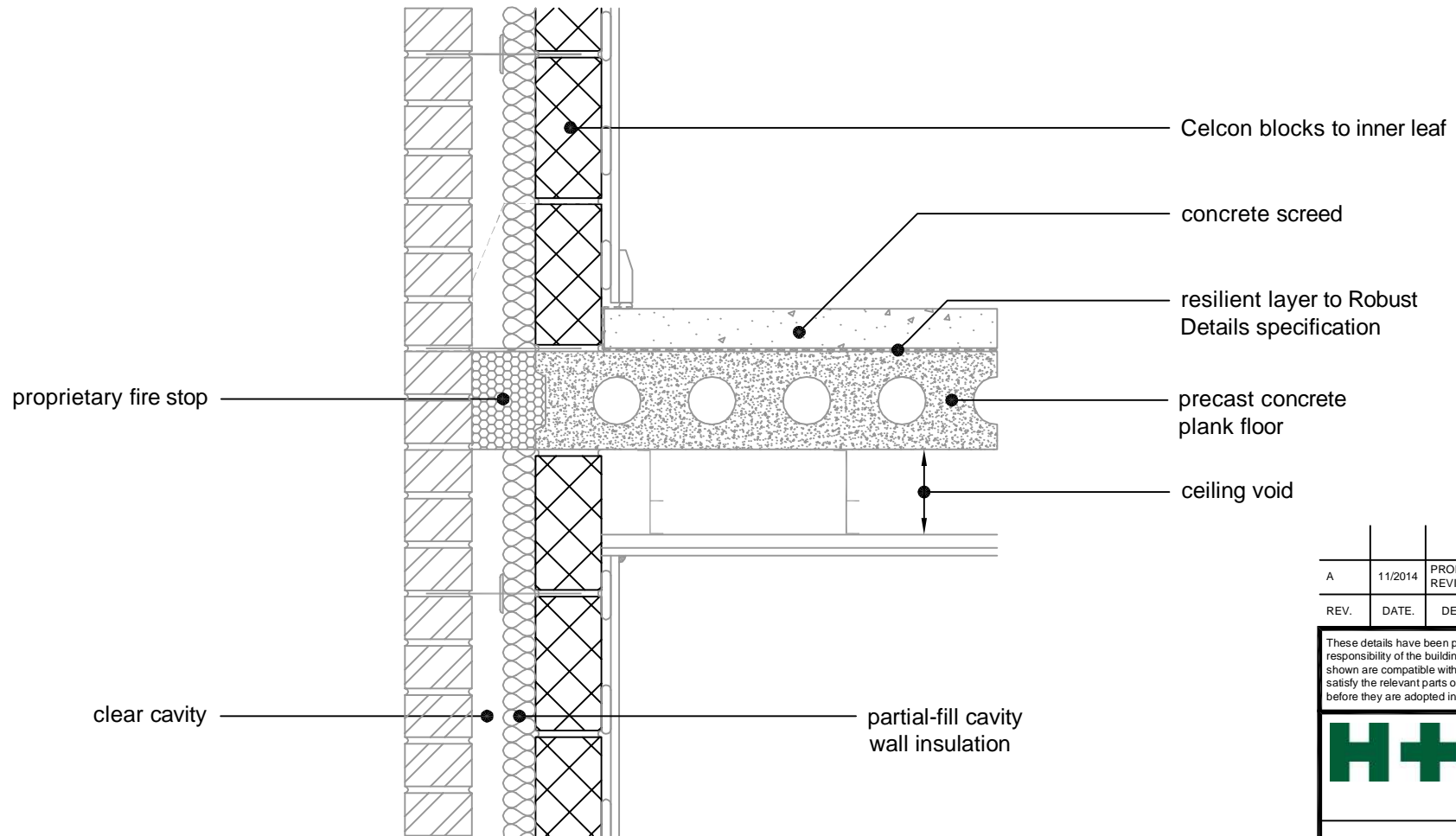
H+H H+H UK Limited
 Technical Services Dept.
 Celcon House
 Ightham, Sevenoaks
 Kent, TN15 9HZ.
 Tel +44 (0)1732 880580
 Fax +44 (0)1732 887013
 E-mail tsd@hhcelcon.co.uk

TITLE External Masonry Cavity Wall,
 Partial Fill - Intermediate Timber Floor
 Within A Dwelling

DWG No. HH-PF-08

DRAWN BY SJB CHECKED BY AHR

DATE Nov 2012 SCALE 1:100 @ A4 REV.NO. A



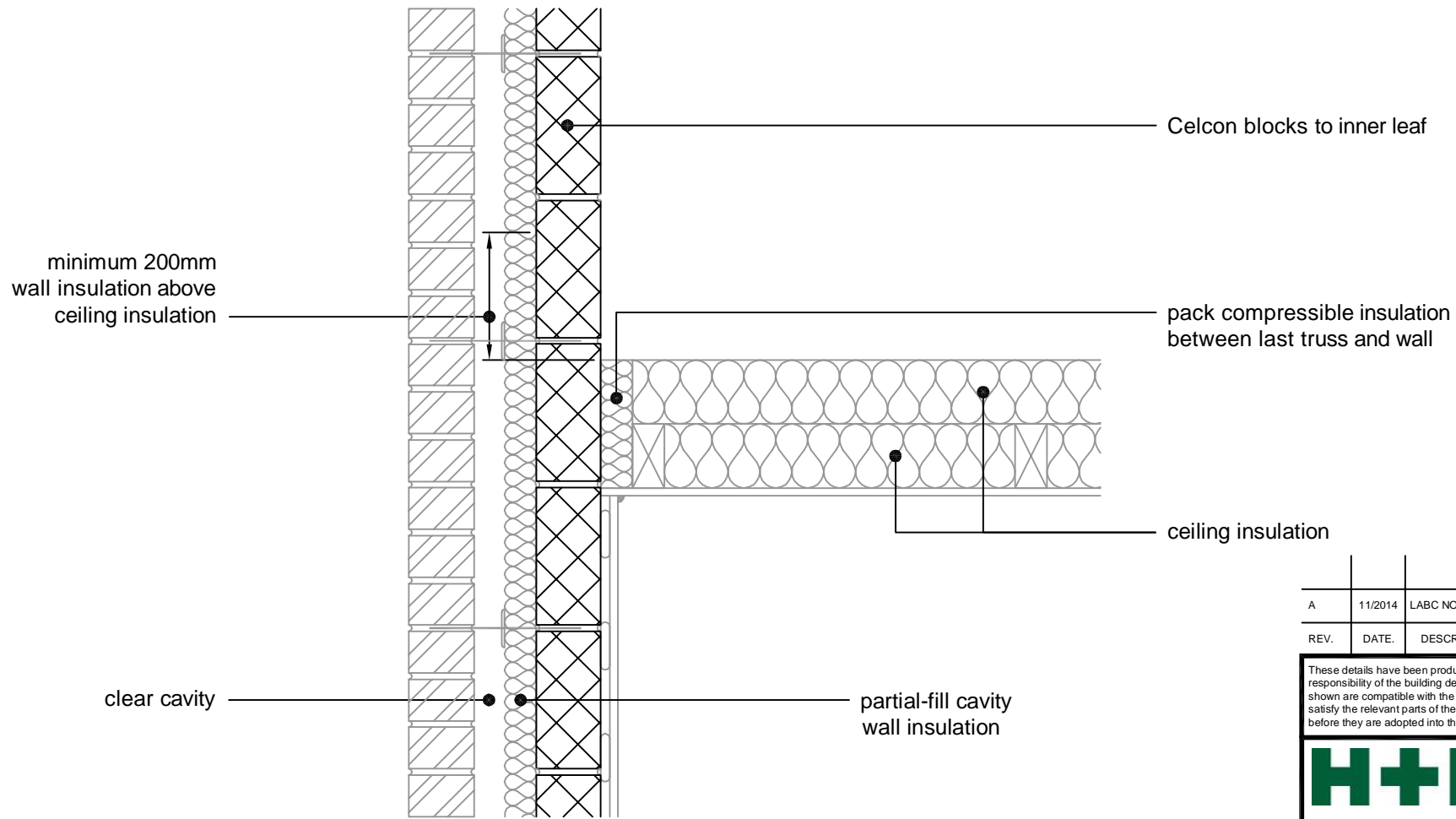
For Ψ values applicable to this detail,
 see Constructive Details CD0009
 or
 LABC Registered Construction
 Details E7MCPF4 - 6.

REV.	DATE	DESCRIPTION	BY.
A	11/2014	PROPRIETARY FIRE STOP NOTE REVISED. LABC NOTE ADDED.	SJB

These details have been produced for guidance only. It is the responsibility of the building designer to ensure that the details shown are compatible with the overall building design and will satisfy the relevant parts of the Building Regulations applicable before they are adopted into the project design.

H+H H+H UK Limited
 Technical Services Dept.
 Celcon House
 Ightham, Sevenoaks
 Kent, TN15 9HZ.
 Tel +44 (0)1732 880580
 Fax +44 (0)1732 887013
 E-mail tsd@hhcelcon.co.uk

TITLE External Masonry Cavity Wall, Partial Fill - Precast Concrete Separating Floor Between Dwellings			
DWG No.		HH-PF-09	
DRAWN BY		CHECKED BY	
SJB		AHR	
DATE	SCALE	REV.NO.	
Nov 2012	1:100 @ A4	A	



A	11/2014	LABC NOTE ADDED	SJB
REV.	DATE.	DESCRIPTION.	BY.

These details have been produced for guidance only. It is the responsibility of the building designer to ensure that the details shown are compatible with the overall building design and will satisfy the relevant parts of the Building Regulations applicable before they are adopted into the project design.

H+H H+H UK Limited
 Technical Services Dept.
 Celcon House
 Ightham, Sevenoaks
 Kent, TN15 9HZ.
 Tel +44 (0)1732 880580
 Fax +44 (0)1732 887013
 E-mail tsd@hhcelcon.co.uk

TITLE External Masonry Cavity Wall,
 Partial Fill - Pitched Roof, Gable -
 Insulation At Ceiling Level, Ventilated Loft

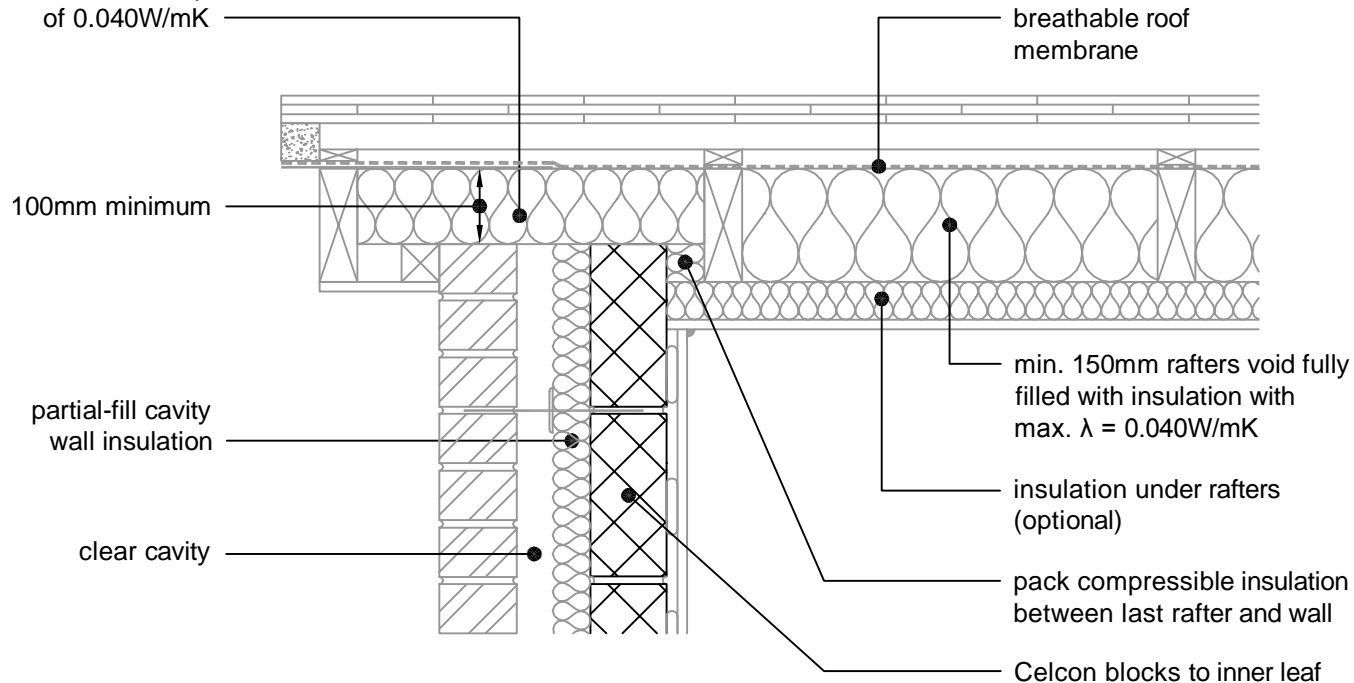
DWG No. HH-PF-10

DRAWN BY SJB CHECKED BY AHR

DATE Nov 2012 SCALE 1:100 @ A4 REV.NO. A

For Ψ values applicable to this detail,
 see Constructive Details CD0010
 or
 LABC Registered Construction
 Details E12MCPF4 - 6.

fill this void with insulation
having a maximum conductivity
of 0.040W/mK



B	11/2014	LABC NOTE ADDED	SJB
A	11/2013	RAFTERS INSULATION THICKNESS NOTE ADDED	SJB
REV.	DATE.	DESCRIPTION.	BY.

These details have been produced for guidance only. It is the responsibility of the building designer to ensure that the details shown are compatible with the overall building design and will satisfy the relevant parts of the Building Regulations applicable before they are adopted into the project design.

H+H H+H UK Limited
 Technical Services Dept.
 Celcon House
 Ightham, Sevenoaks
 Kent, TN15 9HZ.
 Tel +44 (0)1732 880580
 Fax +44 (0)1732 887013
 E-mail tsd@hhcelcon.co.uk

TITLE External Masonry Cavity Wall, Partial Fill - Pitched Roof, Gable - Insulation At Rafter Level, Unventilated Rafter Void		
DWG No. HH-PF-11		
DRAWN BY SJB	CHECKED BY AHR	
DATE Nov 2012	SCALE 1:100 @ A4	REV.NO. B

For Ψ values applicable to this detail,
see Constructive Details CD0011
or
LABC Registered Construction
Details E13MCPF4 - 6.

min. 50mm insulation
between wall plate
and vent

proprietary ventilator
between rafters

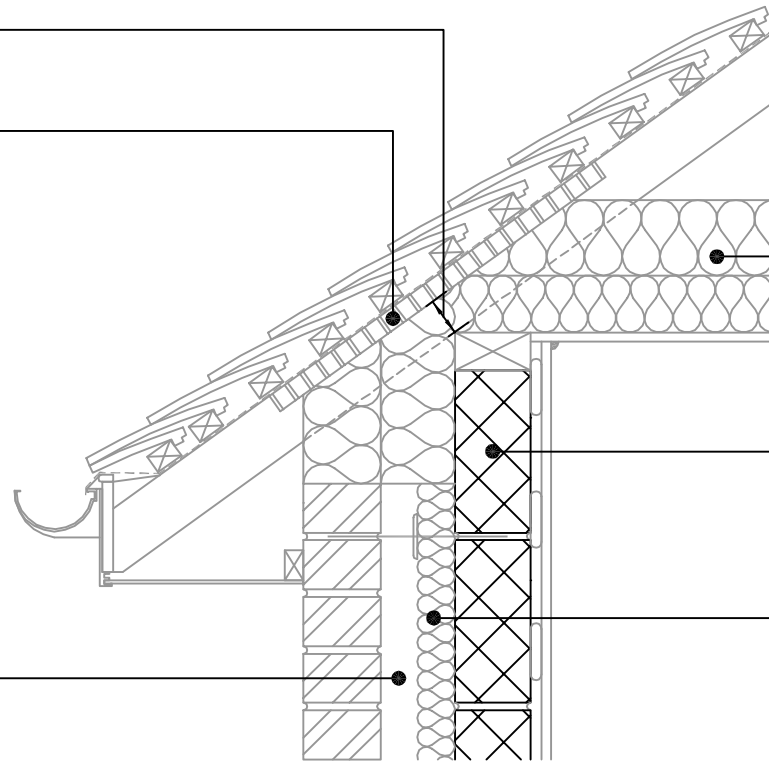
ventilated loft

ceiling insulation
between and over
roof trusses

Celcon blocks to inner leaf

partial-fill cavity
wall insulation

clear cavity



REV.	DATE.	DESCRIPTION.	BY.
B	11/2014	LABC NOTE ADDED	SJB
A	11/2013	WALL PLATE INSULATION COVER NOTE MOVED	SJB

These details have been produced for guidance only. It is the responsibility of the building designer to ensure that the details shown are compatible with the overall building design and will satisfy the relevant parts of the Building Regulations applicable before they are adopted into the project design.

H+H H+H UK Limited
 Technical Services Dept.
 Celcon House
 Ightham, Sevenoaks
 Kent, TN15 9HZ.
 Tel +44 (0)1732 880580
 Fax +44 (0)1732 887013
 E-mail tsd@hhcelcon.co.uk

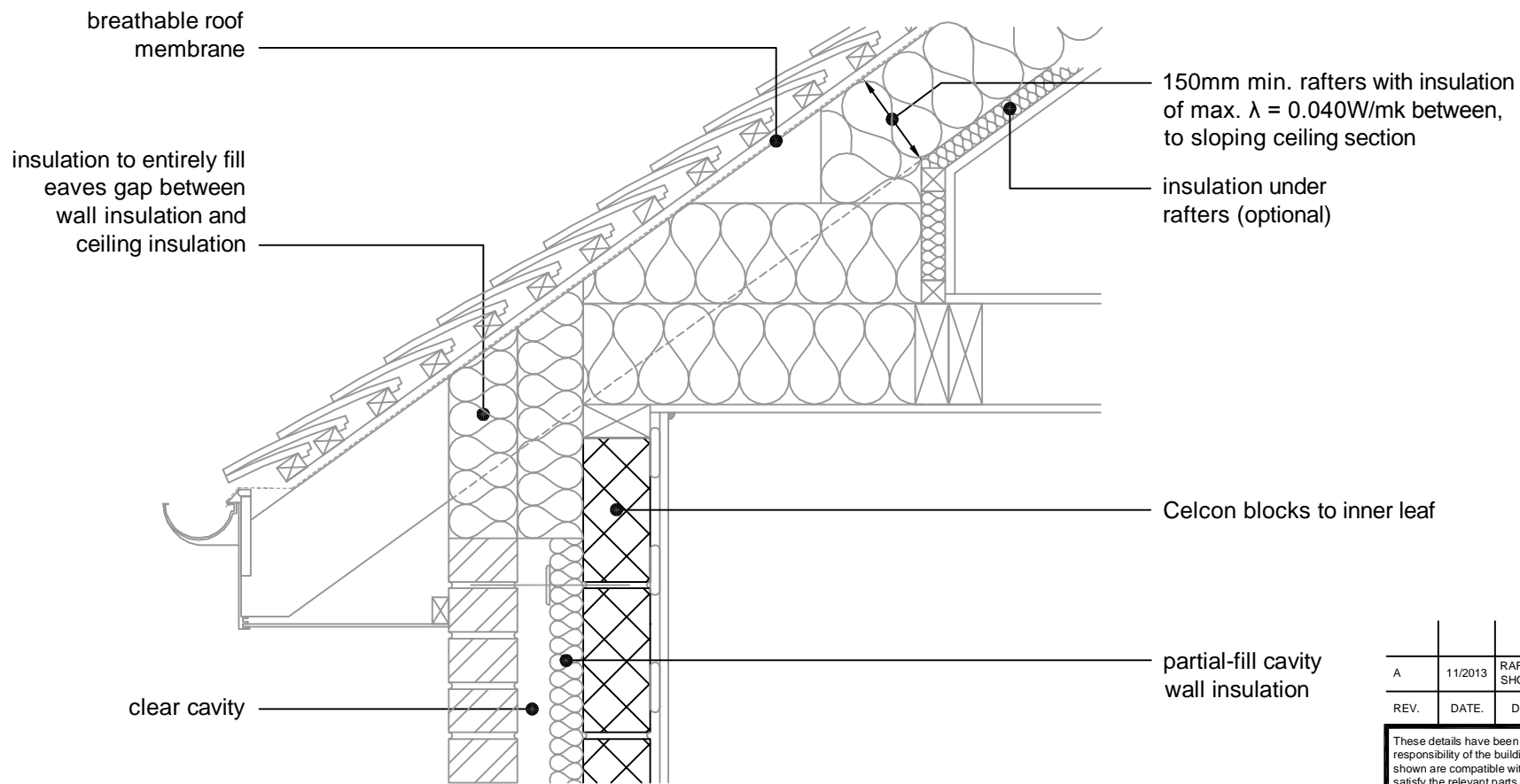
TITLE External Masonry Cavity Wall,
 Partial Fill - Pitched Roof, Eaves - Insulation
 At Ceiling Level, Ventilated Loft

DWG No. HH-PF-12

DRAWN BY SJB CHECKED BY AHR

DATE Nov 2012 SCALE 1:100 @ A4 REV.NO. B

For Ψ values applicable to this detail,
 see Constructive Details CD0012
 or
 LABC Registered Construction
 Details E10MCPF4 - 6.



For Ψ values applicable to this detail, see Constructive Details CD0013.

REV.	DATE.	DESCRIPTION.	BY.
A	11/2013	RAFTERS INSULATION NOW SHOWN AS 150mm.	SJB

These details have been produced for guidance only. It is the responsibility of the building designer to ensure that the details shown are compatible with the overall building design and will satisfy the relevant parts of the Building Regulations applicable before they are adopted into the project design.

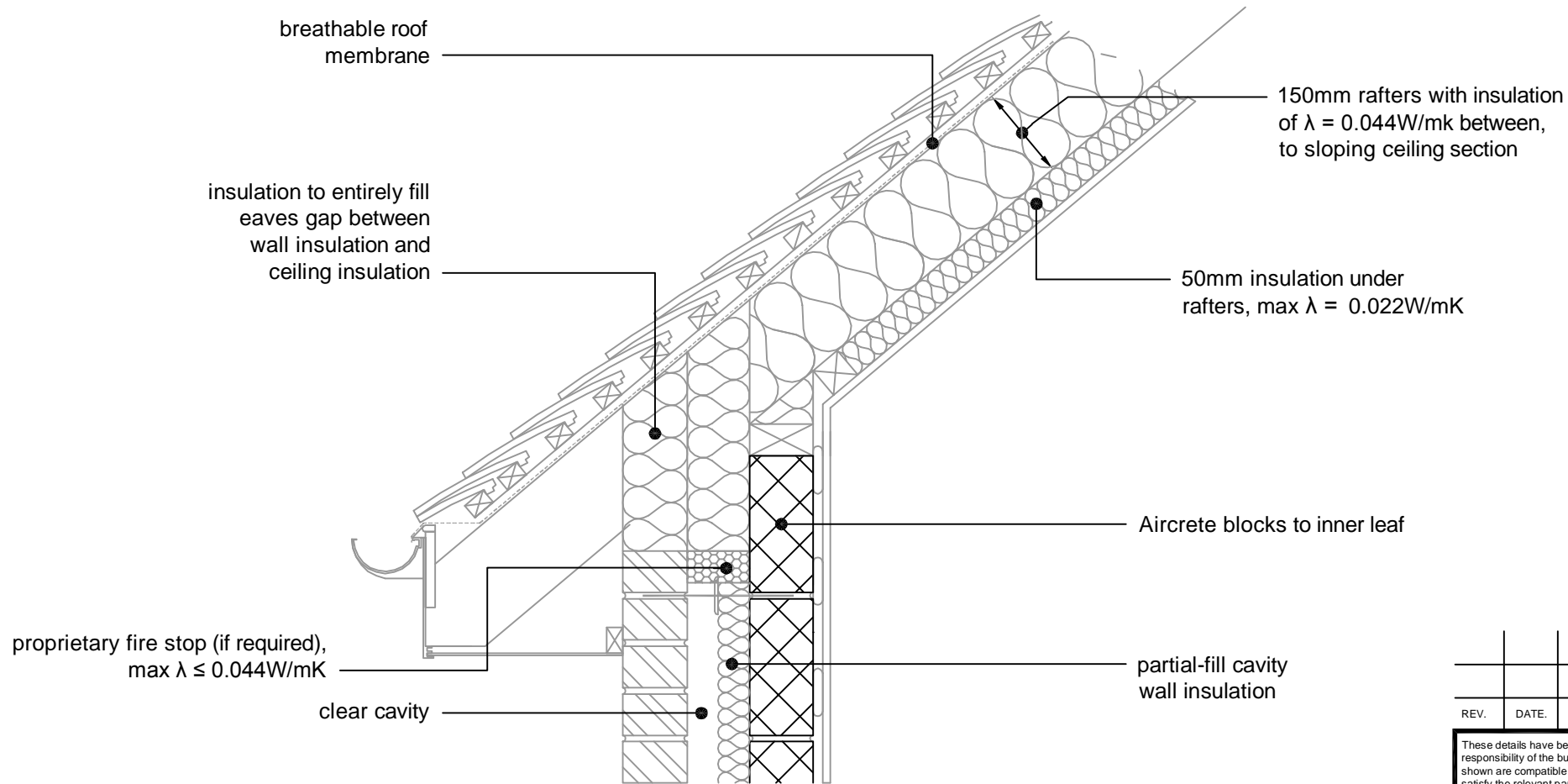
H+H H+H UK Limited
 Technical Services Dept.
 Celcon House
 Ightham, Sevenoaks
 Kent, TN15 9HZ.
 Tel +44 (0)1732 880580
 Fax +44 (0)1732 887013
 E-mail tsd@hhcelcon.co.uk

TITLE External Masonry Cavity Wall,
 Partial Fill - Pitched Roof, Eaves - Insulation
 At Rafter Level, Unventilated Rafter Void

DWG No. HH-PF-13

DRAWN BY SJB CHECKED BY AHR

DATE Nov 2012 SCALE 1:100 @ A4 REV.NO. A



For Ψ values applicable to this detail, see LABC Registered Construction Details E11MCPF4 - 6.

REV.	DATE	DESCRIPTION	BY.

These details have been produced for guidance only. It is the responsibility of the building designer to ensure that the details shown are compatible with the overall building design and will satisfy the relevant parts of the Building Regulations applicable before they are adopted into the project design.

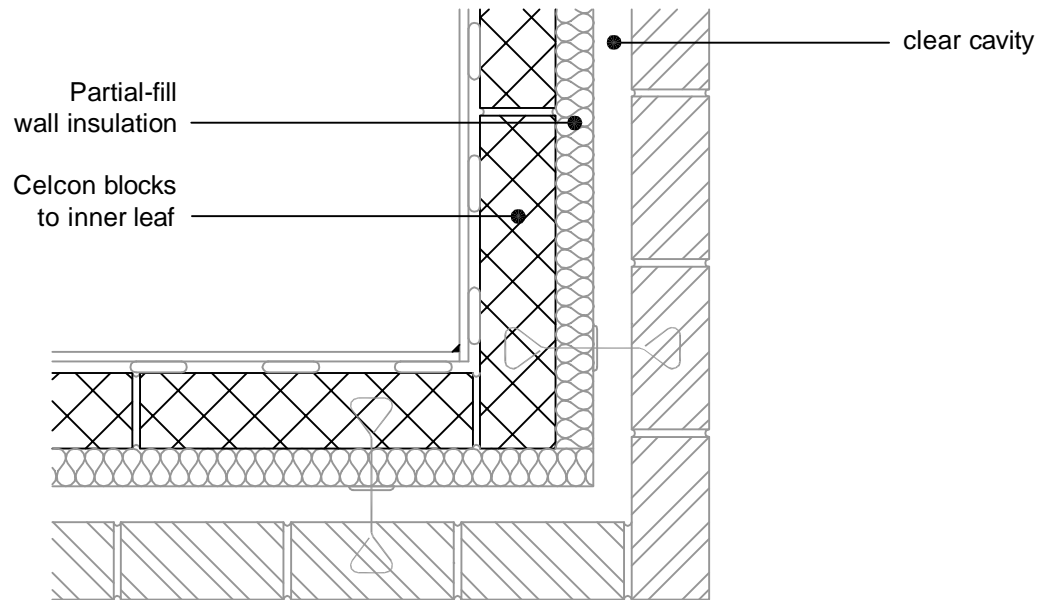
H+H H+H UK Limited
 Technical Services Dept.
 Celcon House
 Ightham, Sevenoaks
 Kent, TN15 9HZ.
 Tel +44 (0)1732 880580
 Fax +44 (0)1732 887013
 E-mail tsd@hhcelcon.co.uk

TITLE External Masonry Cavity Wall,
 Partial Fill - Pitched Roof, Eaves - Insulation
 At Rafter Level, Unventilated Rafter Void

DWG No. HH-PF-23

DRAWN BY SJB CHECKED BY AHR

DATE Nov 2014 SCALE 1:100 @ A4 REV.NO. 0



For Ψ values applicable to this detail,
 see Constructive Details CD0014
 or
 LABC Registered Construction
 Details E16MCPF4 - 6.

REV.	DATE	DESCRIPTION	BY.
A	11/2014	LABC NOTE ADDED	SJB

These details have been produced for guidance only. It is the responsibility of the building designer to ensure that the details shown are compatible with the overall building design and will satisfy the relevant parts of the Building Regulations applicable before they are adopted into the project design.

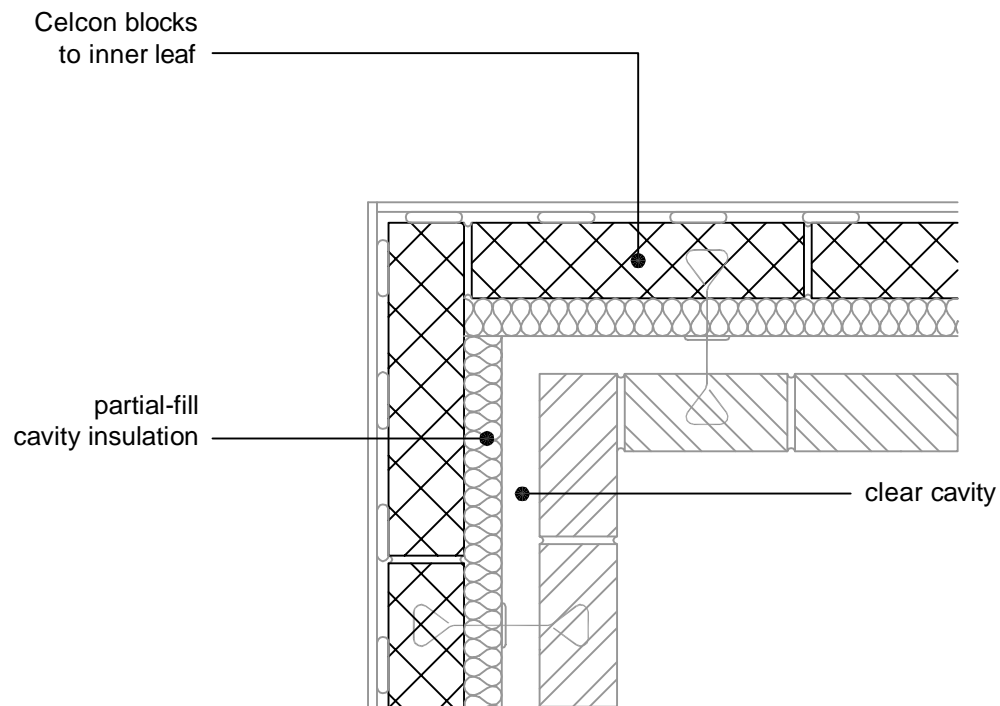
H+H H+H UK Limited
 Technical Services Dept.
 Celcon House
 Ightham, Sevenoaks
 Kent, TN15 9HZ.
 Tel +44 (0)1732 880580
 Fax +44 (0)1732 887013
 E-mail tsd@hhcelcon.co.uk

TITLE
**External Masonry Cavity Wall,
 Partial Fill - Normal Corner**

DWG No. **HH-PF-14**

DRAWN BY **SJB** CHECKED BY **AHR**

DATE **Nov 2012** SCALE **1:100 @ A4** REV.NO. **A**



For Ψ values applicable to this detail,
 see Constructive Details CD0015
 or
 LABC Registered Construction
 Details E17MCPF4 - 6.

REV.	DATE	DESCRIPTION	BY.
A	11/2014	LABC NOTE ADDED	SJB

These details have been produced for guidance only. It is the responsibility of the building designer to ensure that the details shown are compatible with the overall building design and will satisfy the relevant parts of the Building Regulations applicable before they are adopted into the project design.

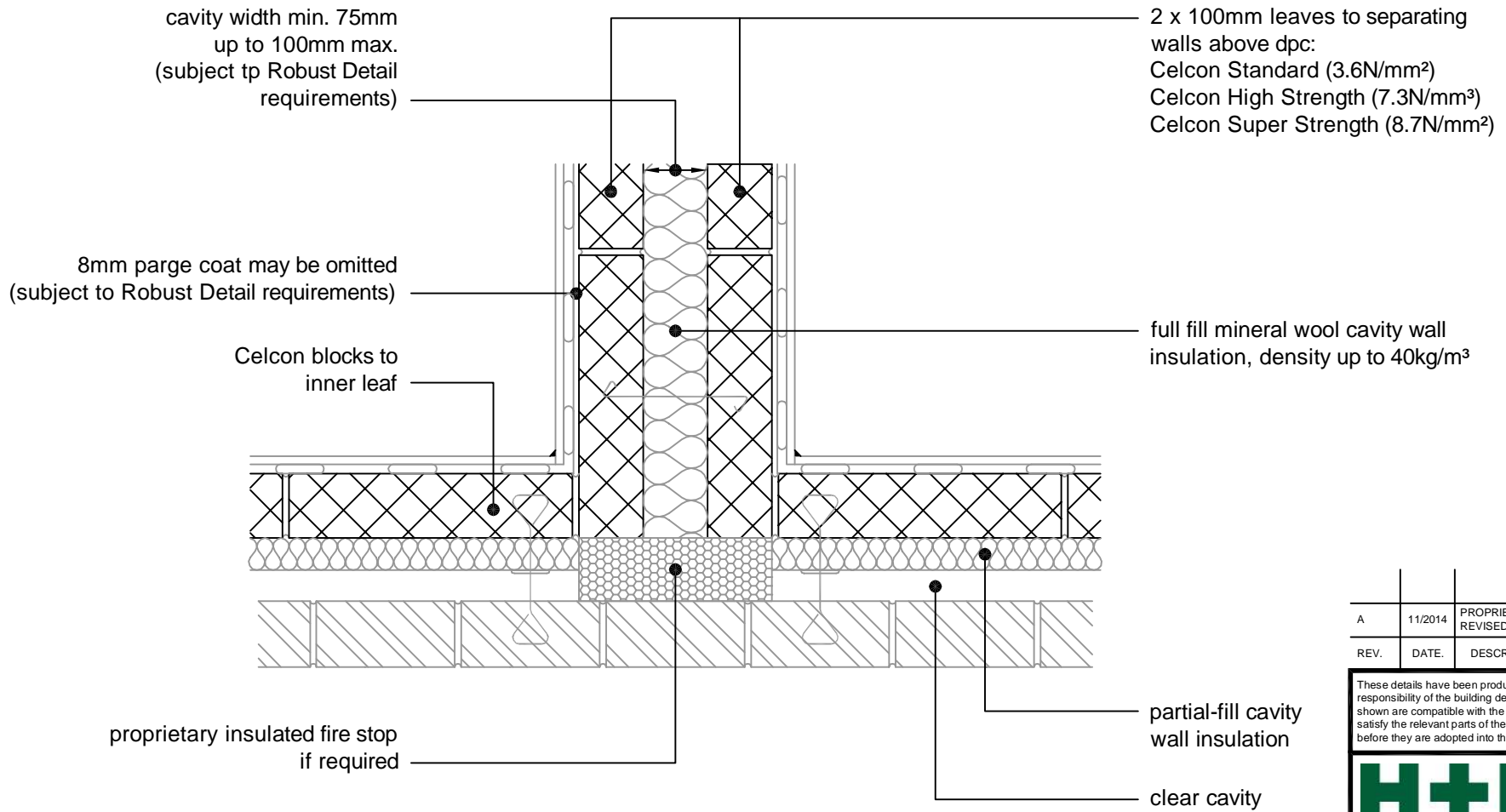
H+H H+H UK Limited
 Technical Services Dept.
 Celcon House
 Ightham, Sevenoaks
 Kent, TN15 9HZ.
 Tel +44 (0)1732 880580
 Fax +44 (0)1732 887013
 E-mail tsd@hhcelcon.co.uk

TITLE
 External Masonry Cavity Wall,
 Partial Fill - Inverted Corner

DWG No. HH-PF-15

DRAWN BY SJB CHECKED BY AHR

DATE Nov 2012 SCALE 1:100 @ A4 REV.NO. A



A	11/2014	PROPRIETARY FIRE STOP NOTE REVISED. LABC NOTE ADDED.	SJB
REV.	DATE.	DESCRIPTION.	BY.

These details have been produced for guidance only. It is the responsibility of the building designer to ensure that the details shown are compatible with the overall building design and will satisfy the relevant parts of the Building Regulations applicable before they are adopted into the project design.

H+H H+H UK Limited
 Technical Services Dept.
 Celcon House
 Ightham, Sevenoaks
 Kent, TN15 9HZ.
 Tel +44 (0)1732 880580
 Fax +44 (0)1732 887013
 E-mail tsd@hhcelcon.co.uk

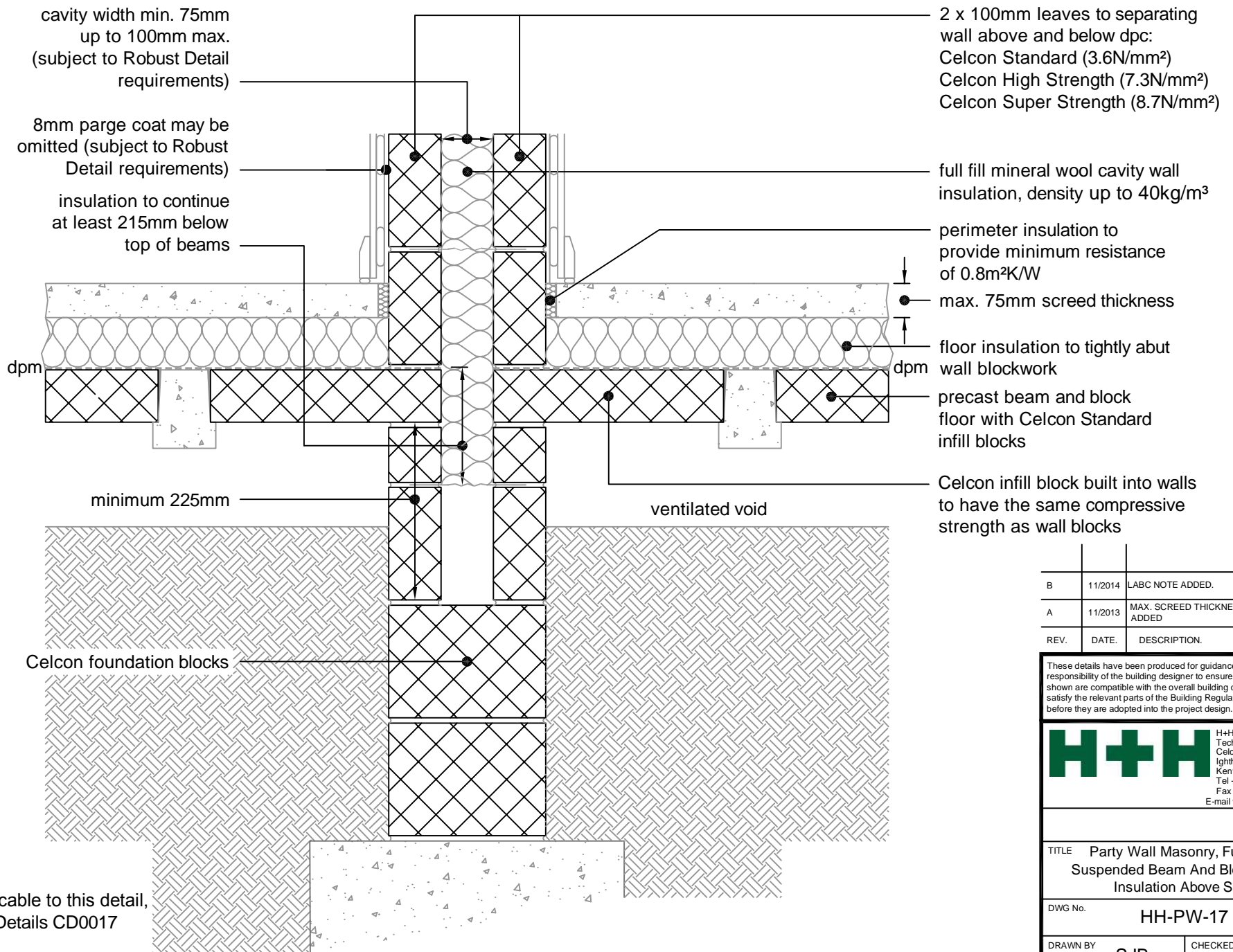
TITLE
 External Masonry Cavity Wall,
 Partial Fill - Party Wall Between Dwellings

DWG No. **HH-PF-16**

DRAWN BY **SJB** CHECKED BY **AHR**

DATE **Nov 2012** SCALE **1:100 @ A4** REV.NO. **A**

For Ψ values applicable to this detail,
 see Constructive Details CD0016
 or
 LABC Registered Construction
 Details E18MCPF7 - 10.



For Ψ values applicable to this detail,
 see Constructive Details CD0017
 or
 LABC Registered Construction
 Details P1PCFF1 - 2.

B	11/2014	LABC NOTE ADDED.	SJB
A	11/2013	MAX. SCREED THICKNESS NOTE ADDED	SJB
REV.	DATE.	DESCRIPTION.	BY.

These details have been produced for guidance only. It is the responsibility of the building designer to ensure that the details shown are compatible with the overall building design and will satisfy the relevant parts of the Building Regulations applicable before they are adopted into the project design.

H+H H+H UK Limited
 Technical Services Dept.
 Celcon House
 Ightham, Sevenoaks
 Kent, TN15 9HZ.
 Tel +44 (0)1732 880580
 Fax +44 (0)1732 887013
 E-mail tsd@hhcelcon.co.uk

TITLE Party Wall Masonry, Full Fill - Suspended Beam And Block Floor, Insulation Above Slab			
DWG No. HH-PW-17			
DRAWN BY SJB		CHECKED BY AHR	
DATE Nov 2012	SCALE 1:100 @ A4	REV.NO.	B

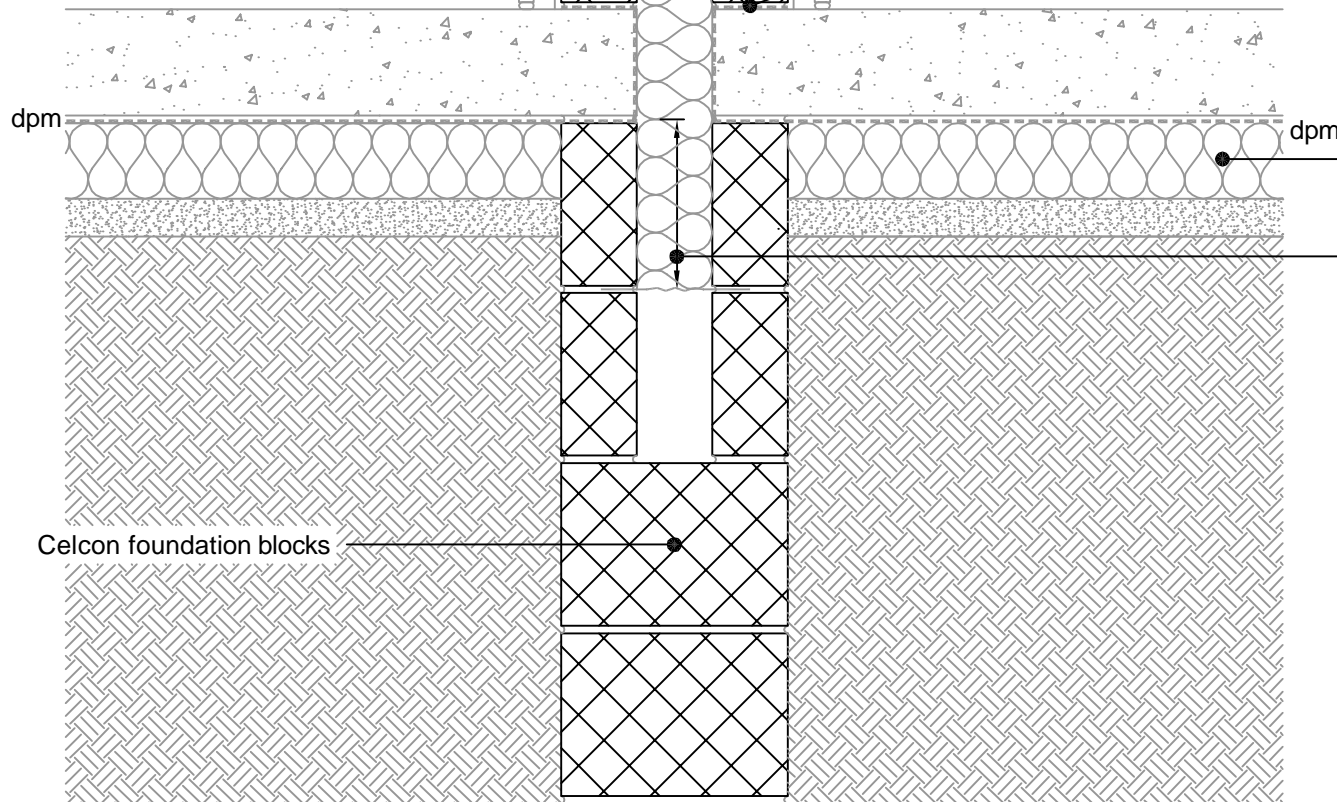
cavity width min. 75mm
up to 100mm max.
(subject to Robust Detail
requirements)

8mm parge coat may be
omitted (subject to Robust
Detail requirements)

full fill mineral wool cavity wall
insulation, density up to 40kg/m³

2 x 100mm leaves to separating
wall above and below dpc:
Celcon Standard (3.6N/mm²)
Celcon High Strength (7.3N/mm²)
Celcon Super Strength (8.7N/mm²)

base course incorporating
lapped dpm and dpc



floor insulation to tightly abut
wall blockwork

insulation to continue
at least 215mm below
underside of slab

Celcon foundation blocks

B	11/2014	MAX. FLOOR THICKNESS NOTE REMOVED. LABC REFERENCE ADDED.	SJB
A	11/2013	MAX. SCREED THICKNESS NOTE ADDED	SJB
REV.	DATE.	DESCRIPTION.	BY.

These details have been produced for guidance only. It is the responsibility of the building designer to ensure that the details shown are compatible with the overall building design and will satisfy the relevant parts of the Building Regulations applicable before they are adopted into the project design.

H+H H+H UK Limited
Technical Services Dept.
Celcon House
Ightham, Sevenoaks
Kent, TN15 9HZ.
Tel +44 (0)1732 880580
Fax +44 (0)1732 887013
E-mail tsd@hhcelcon.co.uk

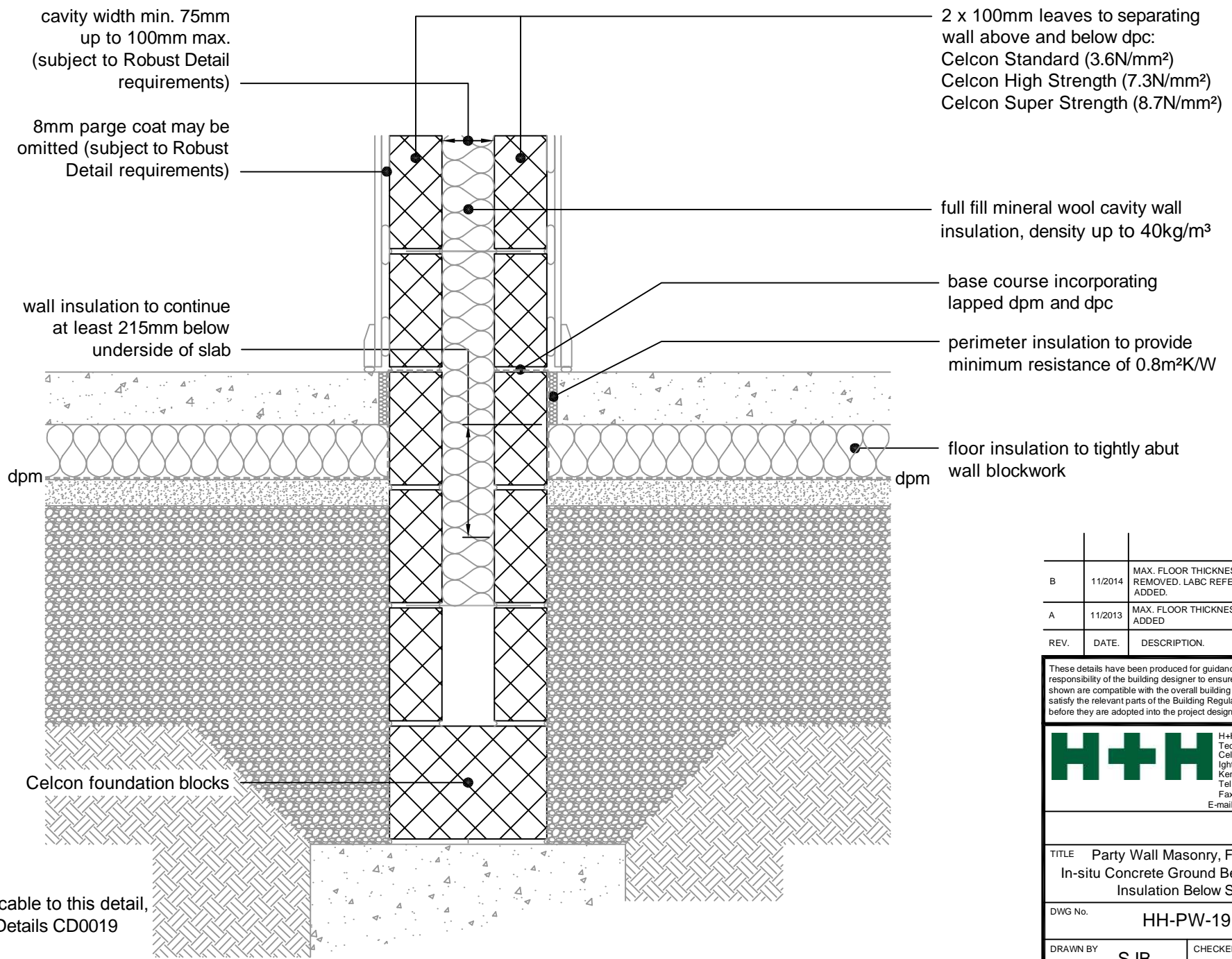
TITLE Party Wall Masonry, Full Fill -
Suspended Concrete Floor,
Insulation Below Slab

DWG No. HH-PW-18

DRAWN BY SJB CHECKED BY AHR

DATE Nov 2012 SCALE 1:100 @ A4 REV.NO. B

For Ψ values applicable to this detail,
see Constructive Details CD0018
or
LABC Registered Construction
Details P1PCFF3 - 4.



For Ψ values applicable to this detail, see Constructive Details CD0019 or LABC Registered Construction Details P1PCFF5 - 6.

B	11/2014	MAX. FLOOR THICKNESS NOTE REMOVED. LABC REFERENCE ADDED.	SJB
A	11/2013	MAX. FLOOR THICKNESS NOTE ADDED.	SJB
REV.	DATE.	DESCRIPTION.	BY.

These details have been produced for guidance only. It is the responsibility of the building designer to ensure that the details shown are compatible with the overall building design and will satisfy the relevant parts of the Building Regulations applicable before they are adopted into the project design.

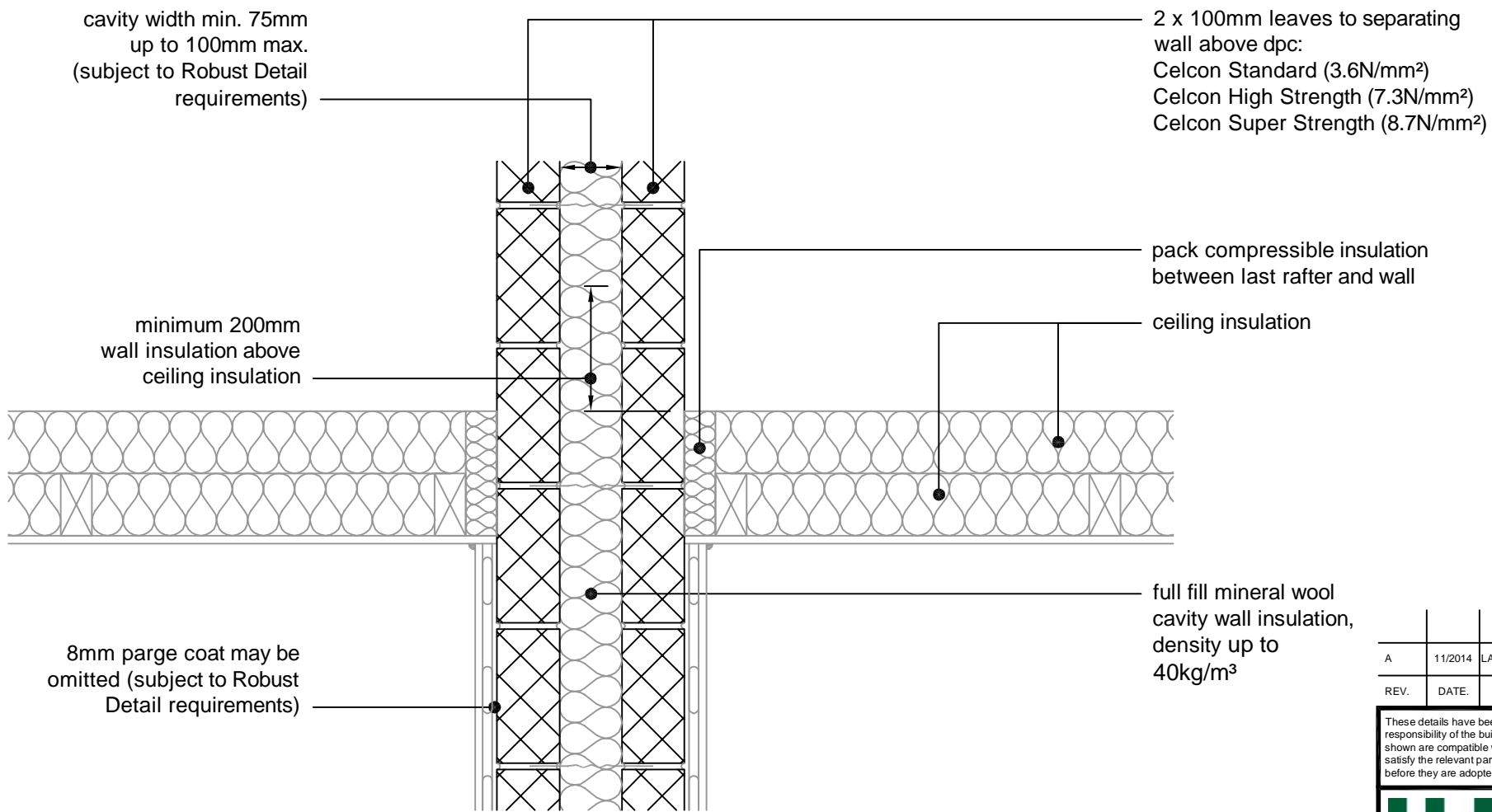
H+H H+H UK Limited
 Technical Services Dept.
 Celcon House
 Ightham, Sevenoaks
 Kent, TN15 9HZ.
 Tel +44 (0)1732 880580
 Fax +44 (0)1732 887013
 E-mail tsd@hhcelcon.co.uk

TITLE Party Wall Masonry, Full Fill - In-situ Concrete Ground Bearing Floor, Insulation Below Slab

DWG No. HH-PW-19

DRAWN BY SJB CHECKED BY AHR

DATE Nov 2012 SCALE 1:100 @ A4 REV.NO. B



For Ψ values applicable to this detail, see Constructive Details CD0020 or LABC Registered Construction Details P4PCFF1 - 2.

A	11/2014	LABC NOTE ADDED	SJB
REV.	DATE.	DESCRIPTION.	BY.

These details have been produced for guidance only. It is the responsibility of the building designer to ensure that the details shown are compatible with the overall building design and will satisfy the relevant parts of the Building Regulations applicable before they are adopted into the project design.

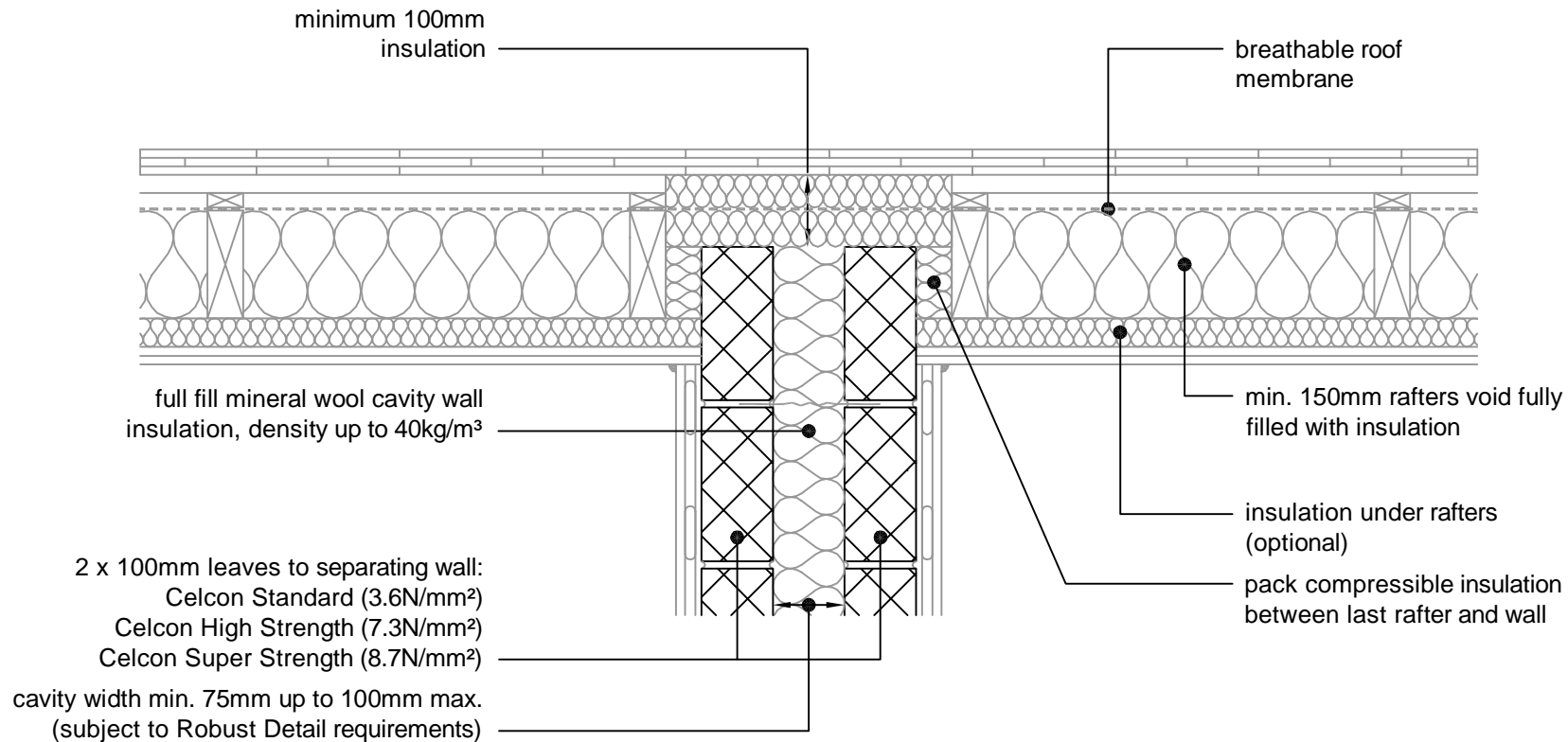
H+H H+H UK Limited
 Technical Services Dept.
 Celcon House
 Ightham, Sevenoaks
 Kent, TN15 9HZ.
 Tel +44 (0)1732 880580
 Fax +44 (0)1732 887013
 E-mail tsd@hhcelcon.co.uk

TITLE Party Wall Masonry, Full Fill - Roof, Insulated At Ceiling Level, Ventilated Loft

DWG No. HH-PW-20

DRAWN BY SJB CHECKED BY AHR

DATE Nov 2012 SCALE 1:100 @ A4 REV.NO. A



B	11/2014	LABC NOTE ADDED	SJB
A	11/2013	RAFTERS INSULATION THICKNESS NOTE ADDED	SJB
REV.	DATE.	DESCRIPTION.	BY.

These details have been produced for guidance only. It is the responsibility of the building designer to ensure that the details shown are compatible with the overall building design and will satisfy the relevant parts of the Building Regulations applicable before they are adopted into the project design.

H+H H+H UK Limited
 Technical Services Dept.
 Celcon House
 Ightham, Sevenoaks
 Kent, TN15 9HZ.
 Tel +44 (0)1732 880580
 Fax +44 (0)1732 887013
 E-mail tsd@hhcelcon.co.uk

TITLE Party Wall Masonry, Full Fill - Roof, Insulated At Rafter Level, Unventilated Rafter Void		
DWG No. HH-PW-21		
DRAWN BY SJB	CHECKED BY AHR	
DATE Nov 2012	SCALE 1:100 @ A4	REV.NO. B

For Ψ values applicable to this detail, see Constructive Details CD0021 or LABC Registered Construction Details P5PCFF1 - 2.