

Detail Ref.	Detail Title
HH-TJ-FF-01	External Masonry Cavity Wall, Full-Fill - Suspended Beam And Block Floor, Insulation Above Slab
HH-TJ-FF-02	External Masonry Cavity Wall, Full-Fill - Suspended In-Situ Concrete Floor, Insulation Below Slab
HH-TJ-FF-03	External Masonry Cavity Wall, Full-Fill - Concrete Ground Bearing Floor, Insulation Below Slab
HH-TJ-FF-04	External Masonry Cavity Wall, Full-Fill - Independent Lintel
HH-TJ-FF-05	External Masonry Cavity Wall, Full-Fill - Steel Lintel, Perforated Base Plate, (Insulated Soffit)
HH-TJ-FF-22	External Masonry Cavity Wall, Full-Fill - Steel Lintel, Open Back (no continuous base plate)
HH-TJ-FF-06	External Masonry Cavity Wall, Full-Fill - Sill
HH-TJ-FF-07	External Masonry Cavity Wall, Full-Fill - Jamb
HH-TJ-FF-08	External Masonry Cavity Wall, Full-Fill - Intermediate Timber Floor Within A Dwelling
HH-TJ-FF-09	External Masonry Cavity Wall, Full-Fill - Precast Concrete Separating Floor Between Dwellings
HH-TJ-FF-10	External Masonry Cavity Wall, Full-Fill - Pitched Roof, Gable, Insulation At Ceiling Level, Ventilated Loft
HH-TJ-FF-11	External Masonry Cavity Wall, Full-Fill - Pitched Roof, Gable, Insulation At Rafter Level, Unventilated Rafter Void
HH-TJ-FF-12	External Masonry Cavity Wall, Full-Fill - Pitched Roof, Eaves, Insulation At Ceiling Level, Ventilated Loft
HH-TJ-FF-13	External Masonry Cavity Wall, Full-Fill - Pitched Roof, Eaves, Insulation At Rafter Level, Unventilated Rafter Void
HH-TJ-FF-23	External Masonry Cavity Wall, Full-Fill - Pitched Roof, Eaves - Insulation At Rafter Level, Unventilated Rafter Void
HH-TJ-FF-14	External Masonry Cavity Wall, Full-Fill - Normal Corner
HH-TJ-FF-15	External Masonry Cavity Wall, Full-Fill - Inverted Corner
HH-TJ-FF-16	External Masonry Cavity Wall, Full-Fill - Party Wall Between Dwellings
HH-TJ-PW-17	Party Wall Masonry, Full Fill - Suspended Beam And Block Floor, Insulation Above Slab
HH-TJ-PW-18	Party Wall Masonry, Full Fill - Suspended Concrete Floor, Insulation Below Slab
HH-TJ-PW-19	Party Wall Masonry, Full Fill - In-Situ Concrete Ground Bearing Floor, Insulation Below Slab
HH-TJ-PW-20	Party Wall Masonry, Full Fill - Roof, Insulation At Ceiling Level, Ventilated Loft
HH-TJ-PW-21	Party Wall Masonry, Full Fill - Roof, Insulation At Rafter Level, Unventilated Rafter Void

REV.	DATE.	DESCRIPTION.	BY.
A	11/2014	HH-TJ-FF-22 & HH-TJ-FF-23 ADDED	SJB

These details have been produced for guidance only. It is the responsibility of the building designer to ensure that the details shown are compatible with the overall building design and will satisfy the relevant parts of the Building Regulations applicable before they are adopted into the project design.

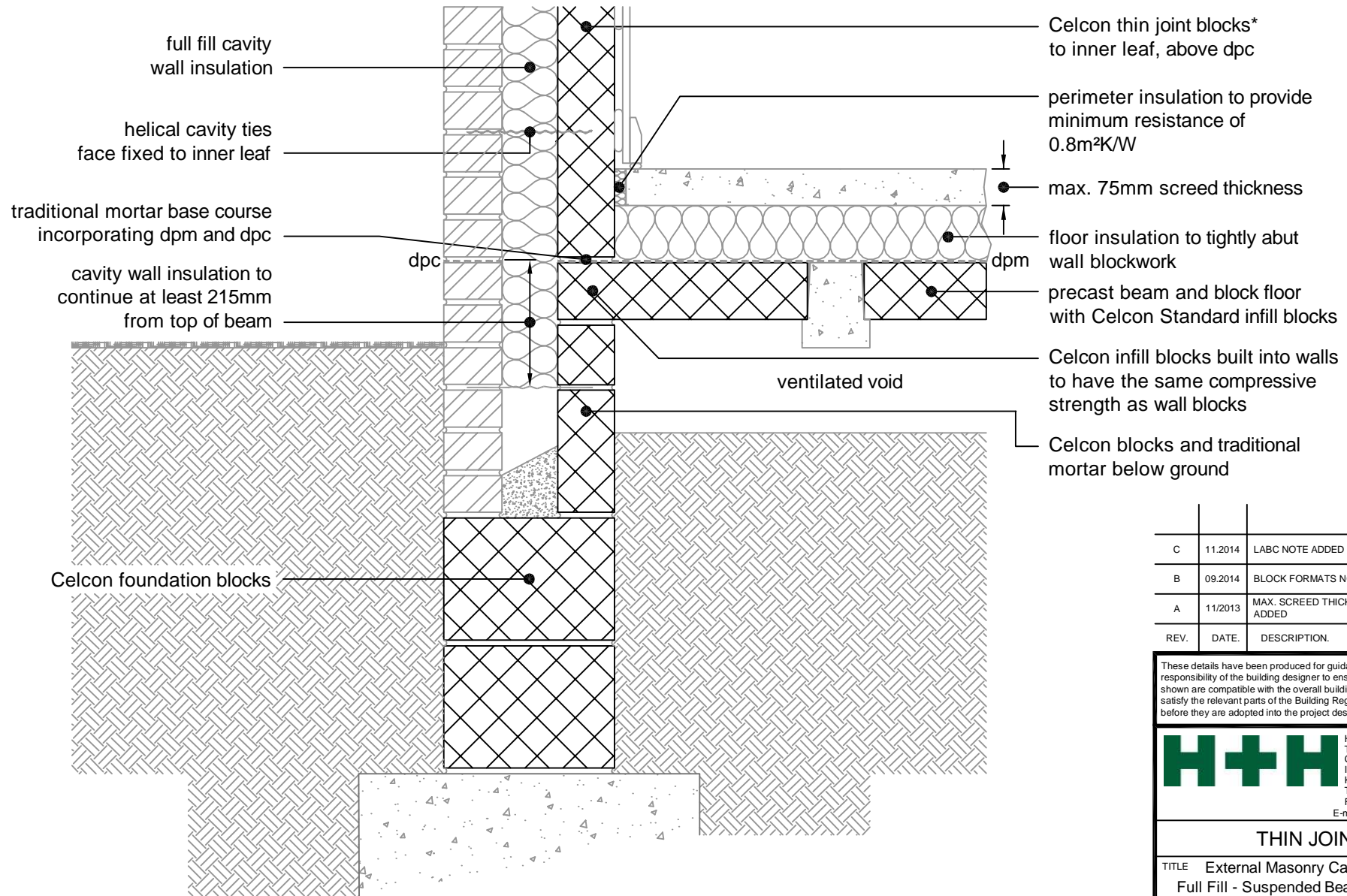
**H+H** H+H UK Limited  
 Technical Services Dept.  
 Celcon House  
 Ightham, Sevenoaks  
 Kent, TN15 9HZ.  
 Tel +44 (0)1732 880580  
 Fax +44 (0)1732 887013  
 E-mail tsd@hhcelcon.co.uk

TITLE **Thin Joint Junction Details  
(full Fill)**

DWG No. **INDEX**

DRAWN BY **SJB** CHECKED BY **AHR**

DATE **Feb 2013** SCALE **N.T.S.** REV.NO. **A**



\* Thin joint block formats are:  
 Plus = 630mm x 215mm  
 Jumbo Blok = 630mm x 250mm  
 Multiplate = 630mm x 350mm  
 in 2mm Celfix mortar joints

For  $\Psi$  values applicable to this detail,  
 see Constructive Details CD0022  
 or  
 LABC Registered Construction  
 Details E5MCFF16 - 21.

REV.	DATE.	DESCRIPTION.	BY.
C	11.2014	LABC NOTE ADDED	SJB
B	09.2014	BLOCK FORMATS NOTE REVISED	SJB
A	11/2013	MAX. SCREED THICKNESS NOTE ADDED	SJB

These details have been produced for guidance only. It is the responsibility of the building designer to ensure that the details shown are compatible with the overall building design and will satisfy the relevant parts of the Building Regulations applicable before they are adopted into the project design.

**H+H** H+H UK Limited  
 Technical Services Dept.  
 Celcon House  
 Ightham, Sevenoaks  
 Kent, TN15 9HZ.  
 Tel +44 (0)1732 880580  
 Fax +44 (0)1732 887013  
 E-mail tsd@hhcelcon.co.uk

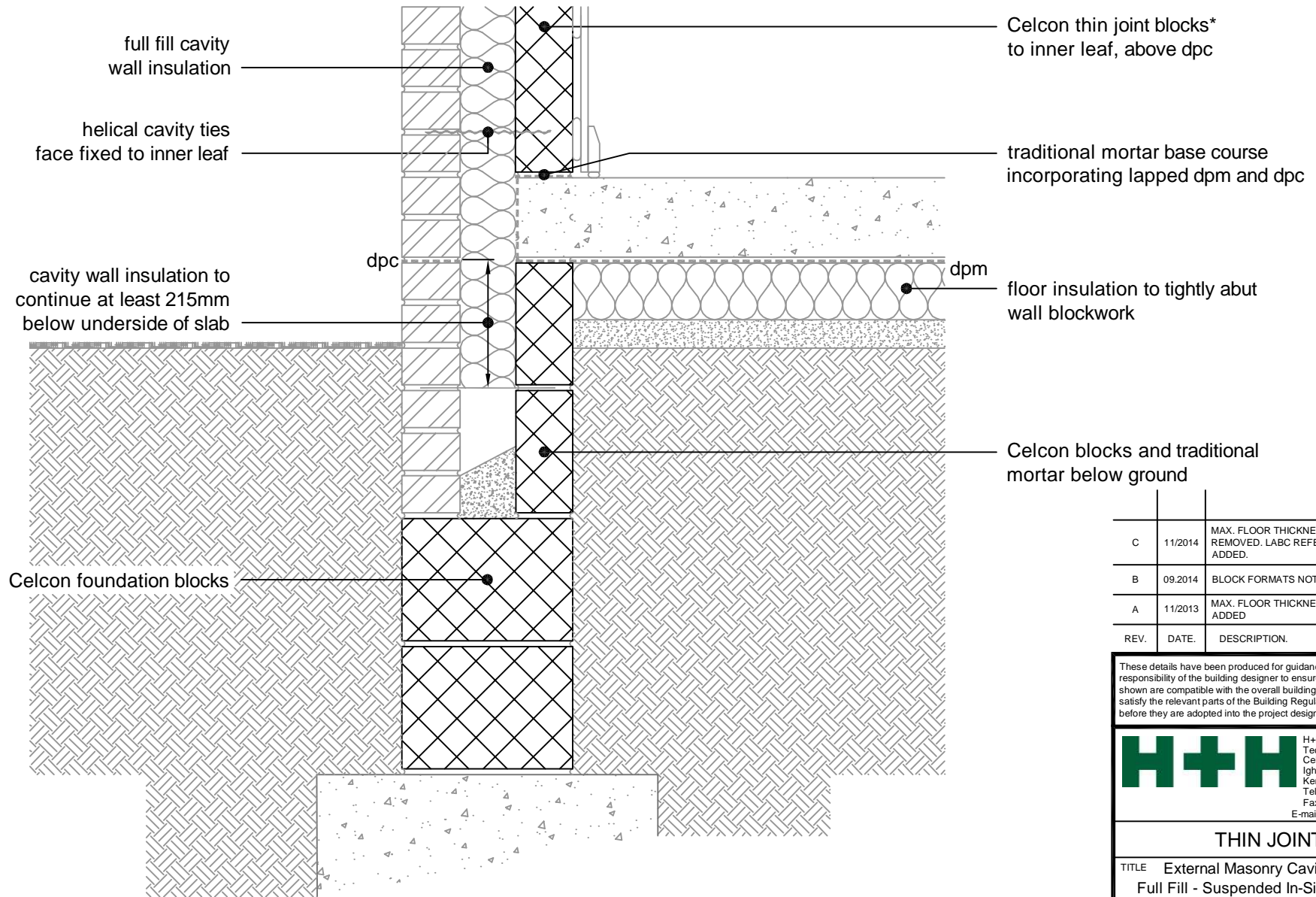
**THIN JOINT**

TITLE External Masonry Cavity Wall,  
 Full Fill - Suspended Beam And Block  
 Floor, Insulation Above Slab

DWG No. HH-TJ-FF-01

DRAWN BY SJB CHECKED BY AHR

DATE Feb 2013 SCALE 1:100 @ A4 REV.NO. C



\* Thin joint block formats are:  
 Plus = 630mm x 215mm  
 Jumbo Blok = 630mm x 250mm  
 Multiplate = 630mm x 350mm  
 in 2mm Celfix mortar joints

For  $\Psi$  values applicable to this detail,  
 see Constructive Details CD0023  
 or  
 LABC Registered Construction  
 Details E5MCFF28 - 33.

REV.	DATE.	DESCRIPTION.	BY.
C	11/2014	MAX. FLOOR THICKNESS NOTE REMOVED. LABC REFERENCE ADDED.	SJB
B	09/2014	BLOCK FORMATS NOTE REVISED	SJB
A	11/2013	MAX. FLOOR THICKNESS NOTE ADDED	SJB

These details have been produced for guidance only. It is the responsibility of the building designer to ensure that the details shown are compatible with the overall building design and will satisfy the relevant parts of the Building Regulations applicable before they are adopted into the project design.

**H+H** H+H UK Limited  
 Technical Services Dept.  
 Celcon House  
 Ightham, Sevenoaks  
 Kent, TN15 9HZ.  
 Tel +44 (0)1732 880580  
 Fax +44 (0)1732 887013  
 E-mail tsd@hhcelcon.co.uk

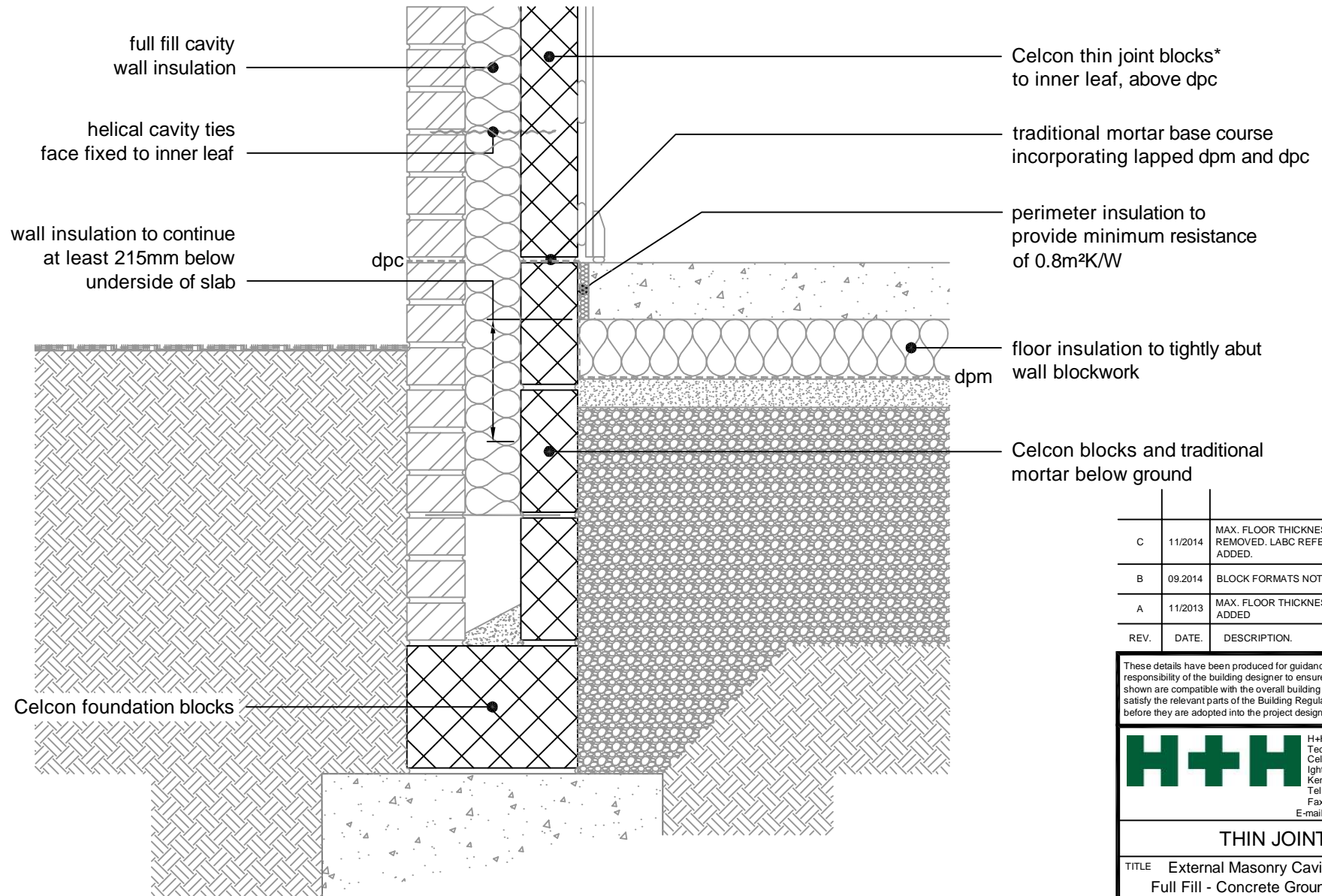
**THIN JOINT**

TITLE External Masonry Cavity Wall,  
 Full Fill - Suspended In-Situ Concrete  
 Floor, Insulation Below Slab

DWG No. HH-TJ-FF-02

DRAWN BY SJB CHECKED BY AHR

DATE Feb 2013 SCALE 1:100 @ A4 REV.NO. C



\* Thin joint block formats are:  
 Plus = 630mm x 215mm  
 Jumbo Blok = 630mm x 250mm  
 Multiplate = 630mm x 350mm  
 in 2mm Celfix mortar joints

For  $\Psi$  values applicable to this detail,  
 see Constructive Details CD0024  
 or  
 LABC Registered Construction  
 Details E5MCFF22 - 27.

REV.	DATE	DESCRIPTION	BY.
C	11/2014	MAX. FLOOR THICKNESS NOTE REMOVED. LABC REFERENCE ADDED.	SJB
B	09.2014	BLOCK FORMATS NOTE REVISED	SJB
A	11/2013	MAX. FLOOR THICKNESS NOTE ADDED	SJB

These details have been produced for guidance only. It is the responsibility of the building designer to ensure that the details shown are compatible with the overall building design and will satisfy the relevant parts of the Building Regulations applicable before they are adopted into the project design.

**H+H** H+H UK Limited  
 Technical Services Dept.  
 Celcon House  
 Ightham, Sevenoaks  
 Kent, TN15 9HZ.  
 Tel +44 (0)1732 880580  
 Fax +44 (0)1732 887013  
 E-mail tsd@hhcelcon.co.uk

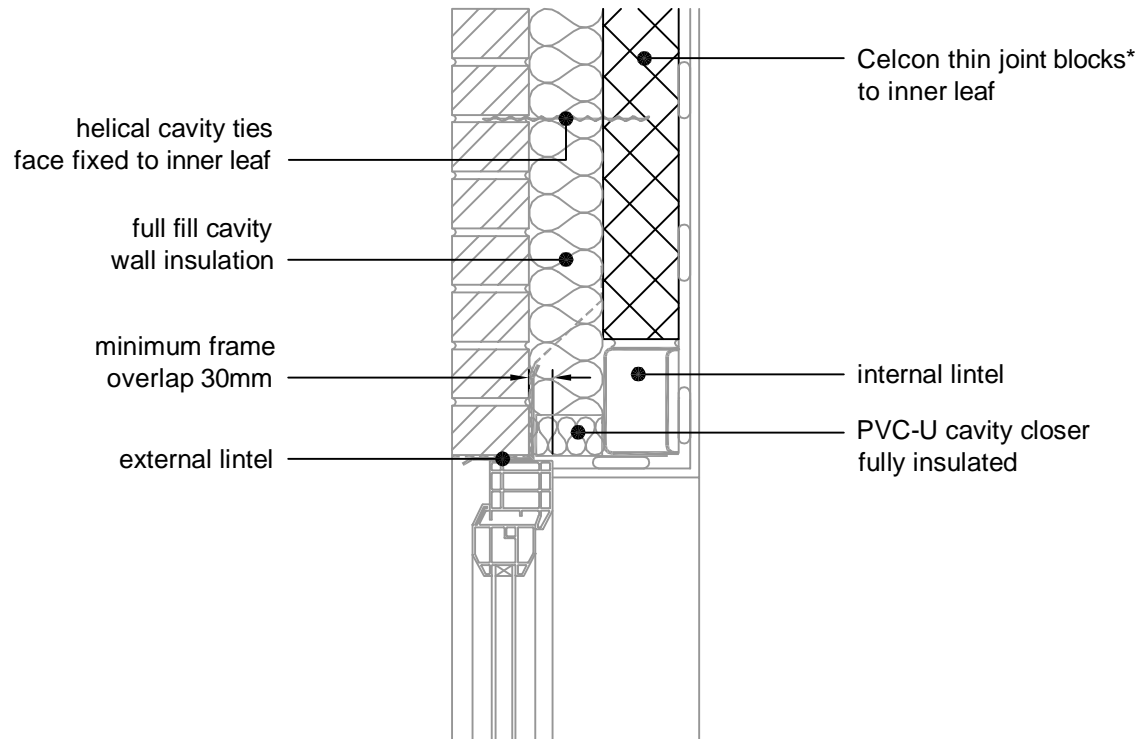
**THIN JOINT**

TITLE External Masonry Cavity Wall,  
 Full Fill - Concrete Ground Bearing  
 Floor, Insulation Below Slab

DWG No. HH-TJ-FF-03

DRAWN BY SJB CHECKED BY AHR

DATE Feb 2013 SCALE 1:100 @ A4 REV.NO. C



\* Thin joint block formats are:  
 Plus = 630mm x 215mm  
 Jumbo Blok = 630mm x 250mm  
 Multiplate = 630mm x 350mm  
 in 2mm Celfix mortar joints

For  $\Psi$  values applicable to this detail,  
 see Constructive Details CD0025  
 or  
 LABC Registered Construction  
 Details E2MCFF4 - 6.

B	11/2014	LABC NOTE ADDED	SJB
A	09.2014	BLOCK FORMATS NOTE REVISED	SJB
REV.	DATE	DESCRIPTION	BY.

These details have been produced for guidance only. It is the responsibility of the building designer to ensure that the details shown are compatible with the overall building design and will satisfy the relevant parts of the Building Regulations applicable before they are adopted into the project design.

**H+H** H+H UK Limited  
 Technical Services Dept.  
 Celcon House  
 Ightham, Sevenoaks  
 Kent, TN15 9HZ.  
 Tel +44 (0)1732 880580  
 Fax +44 (0)1732 887013  
 E-mail tsd@hhcelcon.co.uk

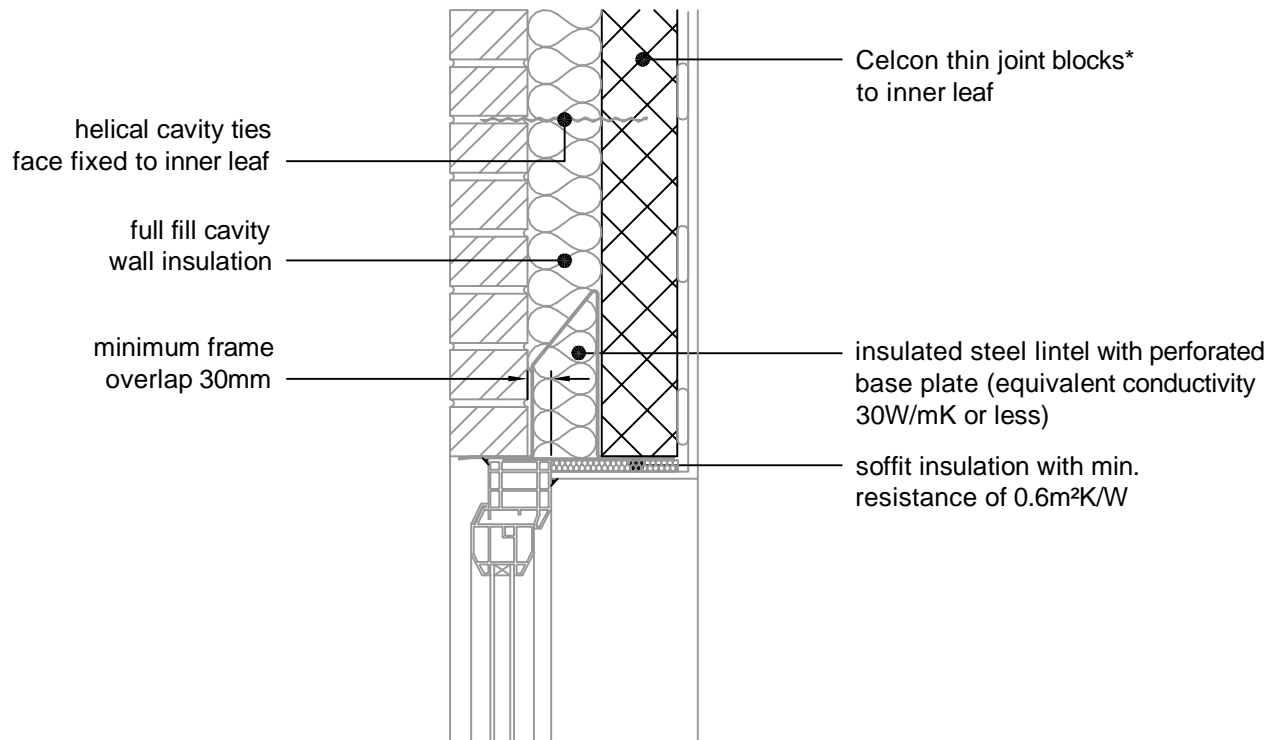
### THIN JOINT

TITLE  
 External Masonry Cavity Wall,  
 Full Fill - Independent Lintel

DWG No. HH-TJ-FF-04

DRAWN BY **SJB** CHECKED BY **AHR**

DATE Feb 2013 SCALE 1:100 @ A4 REV.NO. B



\* Thin joint block formats are:  
 Plus = 630mm x 215mm  
 Jumbo Blok = 630mm x 250mm  
 Multiplate = 630mm x 350mm  
 in 2mm Celfix mortar joints

For  $\Psi$  values applicable to this detail,  
 see Constructive Details CD0026  
 or  
 LABC Registered Construction  
 Details E1MCFF4 - 6.

REV.	DATE	DESCRIPTION	BY.
B	11/2014	MAX. LINTEL HEIGHT NOTE REMOVED. LINTEL BASEPLATE ADDED. LABC REFERENCE ADDED	SJB
A	09.2014	BLOCK FORMATS NOTE REVISED	SJB

These details have been produced for guidance only. It is the responsibility of the building designer to ensure that the details shown are compatible with the overall building design and will satisfy the relevant parts of the Building Regulations applicable before they are adopted into the project design.

**H+H** H+H UK Limited  
 Technical Services Dept.  
 Celcon House  
 Ightham, Sevenoaks  
 Kent, TN15 9HZ.  
 Tel +44 (0)1732 880580  
 Fax +44 (0)1732 887013  
 E-mail tsd@hhcelcon.co.uk

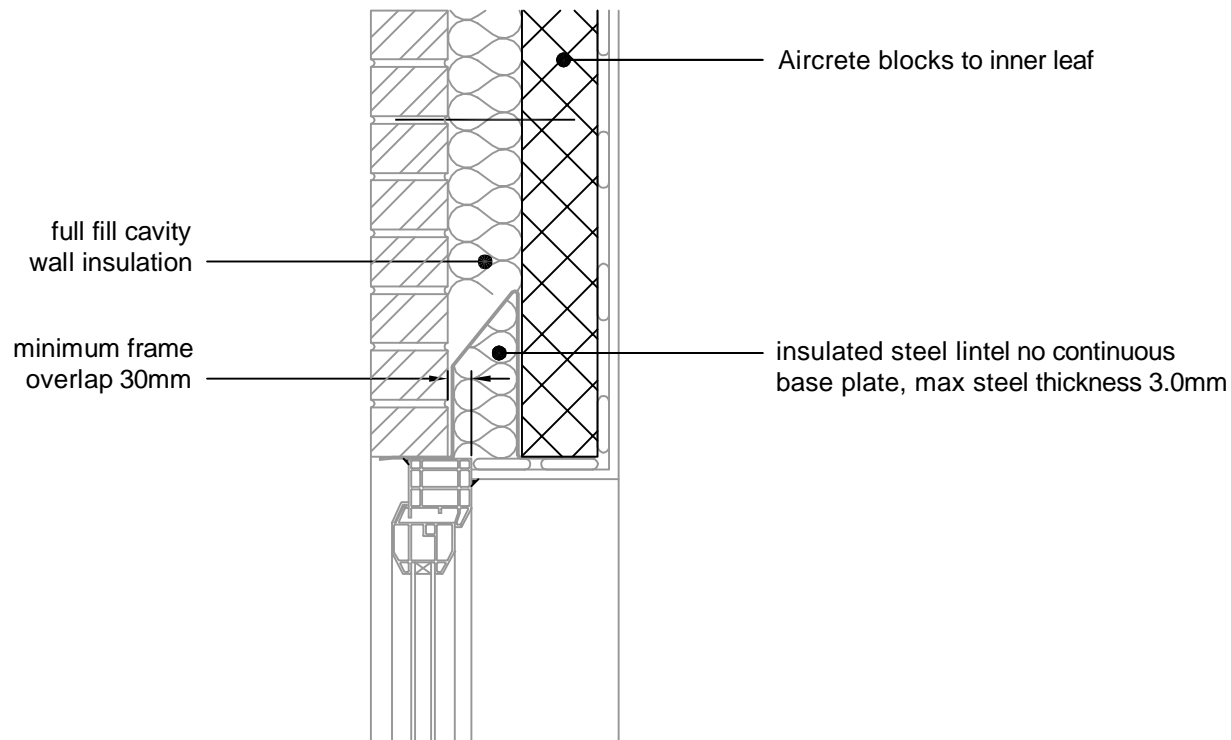
### THIN JOINT

TITLE External Masonry Cavity Wall,  
 Full Fill - Steel Lintel, Perforated  
 Base Plate, (Insulated Soffit)

DWG No. HH-TJ-FF-05

DRAWN BY SJB CHECKED BY AHR

DATE Feb 2013 SCALE 1:100 @ A4 REV.NO. B



\* Thin joint block formats are:  
 Plus = 630mm x 215mm  
 Jumbo Blok = 630mm x 250mm  
 Multiplate = 630mm x 350mm  
 in 2mm Celfix mortar joints

For  $\Psi$  values applicable to this detail,  
 see LABC Registered Construction  
 Details E2MCFF7 - 9.

REV.	DATE.	DESCRIPTION.	BY.

These details have been produced for guidance only. It is the responsibility of the building designer to ensure that the details shown are compatible with the overall building design and will satisfy the relevant parts of the Building Regulations applicable before they are adopted into the project design.

**H+H** H+H UK Limited  
 Technical Services Dept.  
 Celcon House  
 Ightham, Sevenoaks  
 Kent, TN15 9HZ.  
 Tel +44 (0)1732 880580  
 Fax +44 (0)1732 887013  
 E-mail tsd@hhcelcon.co.uk

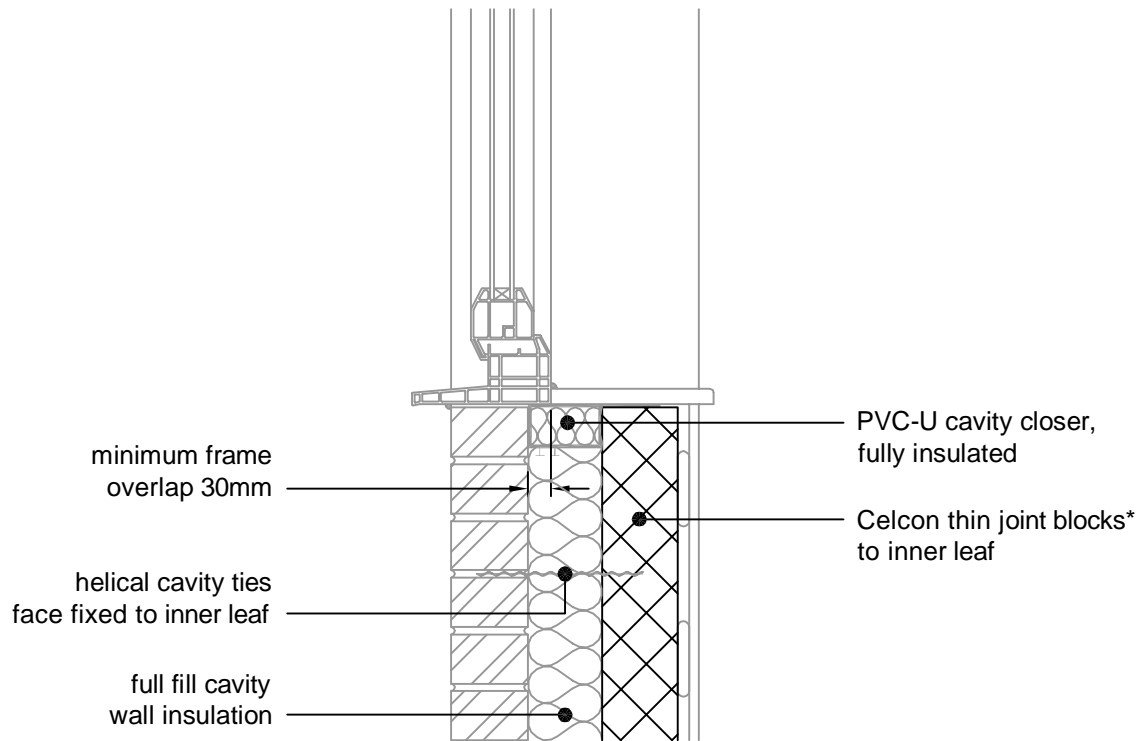
### THIN JOINT

TITLE External Masonry Cavity Wall,  
 Full Fill - Steel Lintel, Open Back,  
 (no continuous base plate)

DWG No. HH-TJ-FF-22

DRAWN BY **SJB** CHECKED BY **AHR**

DATE Nov 2014 SCALE 1:100 @ A4 REV.NO. 0



\* Thin joint block formats are:  
 Plus = 630mm x 215mm  
 Jumbo Blok = 630mm x 250mm  
 Multiplate = 630mm x 350mm  
 in 2mm Celfix mortar joints

For  $\Psi$  values applicable to this detail,  
 see Constructive Details CD0027  
 or  
 LABC Registered Construction  
 Details E3MCFF4 - 6.

REV.	DATE	DESCRIPTION	BY.
B	11/2014	LABC NOTE ADDED	SJB
A	09.2014	BLOCK FORMATS NOTE REVISED	SJB

These details have been produced for guidance only. It is the responsibility of the building designer to ensure that the details shown are compatible with the overall building design and will satisfy the relevant parts of the Building Regulations applicable before they are adopted into the project design.

**H+H** H+H UK Limited  
 Technical Services Dept.  
 Celcon House  
 Ightham, Sevenoaks  
 Kent, TN15 9HZ.  
 Tel +44 (0)1732 880580  
 Fax +44 (0)1732 887013  
 E-mail tsd@hhcelcon.co.uk

**THIN JOINT**

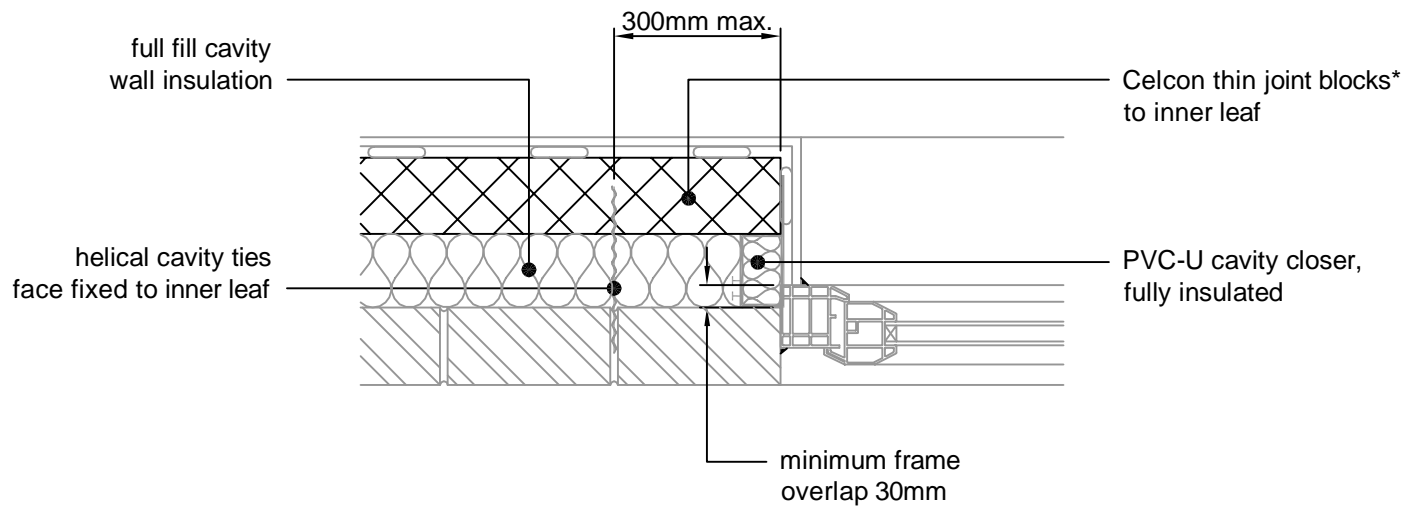
TITLE  
 External Masonry Cavity Wall,  
 Full Fill - Sill

DWG No. HH-TJ-FF-06

DRAWN BY **SJB** CHECKED BY **AHR**

DATE Feb 2013 SCALE 1:100 @ A4 REV.NO. B





\* Thin joint block formats are:  
 Plus = 630mm x 215mm  
 Jumbo Blok = 630mm x 250mm  
 Multiplate = 630mm x 350mm  
 in 2mm Celfix mortar joints

For  $\Psi$  values applicable to this detail,  
 see Constructive Details CD0028  
 or  
 LABC Registered Construction  
 Details E4MCFF4 - 6.

REV.	DATE	DESCRIPTION	BY.
B	11.2014	LABC NOTE ADDED.	SJB
A	09.2014	BLOCK FORMATS NOTE REVISED	SJB

These details have been produced for guidance only. It is the responsibility of the building designer to ensure that the details shown are compatible with the overall building design and will satisfy the relevant parts of the Building Regulations applicable before they are adopted into the project design.

**H+H** H+H UK Limited  
 Technical Services Dept.  
 Celcon House  
 Ightham, Sevenoaks  
 Kent, TN15 9HZ.  
 Tel +44 (0)1732 880580  
 Fax +44 (0)1732 887013  
 E-mail tsd@hhcelcon.co.uk

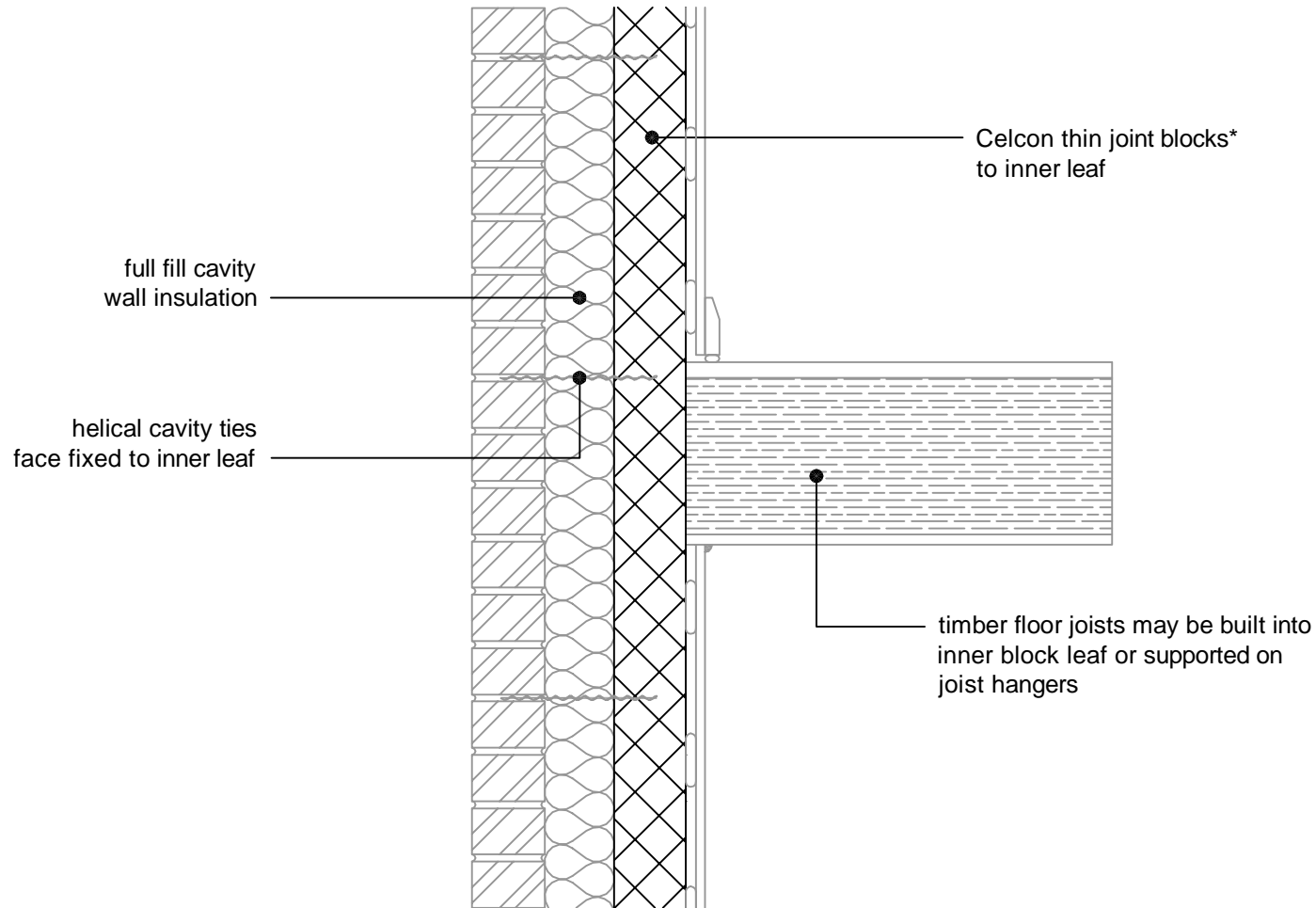
### THIN JOINT

TITLE  
 External Masonry Cavity Wall,  
 Full Fill - Jamb

DWG No. HH-TJ-FF-07

DRAWN BY SJB CHECKED BY AHR

DATE Feb 2013 SCALE 1:100 @ A4 REV.NO. B



\* Thin joint block formats are:  
 Plus = 630mm x 215mm  
 Jumbo Blok = 630mm x 250mm  
 Multiplate = 630mm x 350mm  
 in 2mm Celfix mortar joints

For  $\Psi$  values applicable to this detail,  
 see Constructive Details CD0029  
 or  
 LABC Registered Construction  
 Details E6MCFF4 - 6.

B	11.2014	LABC NOTE ADDED	SJB
A	09.2014	BLOCK FORMATS NOTE REVISED	SJB
REV.	DATE	DESCRIPTION	BY.

These details have been produced for guidance only. It is the responsibility of the building designer to ensure that the details shown are compatible with the overall building design and will satisfy the relevant parts of the Building Regulations applicable before they are adopted into the project design.

**H+H** H+H UK Limited  
 Technical Services Dept.  
 Celcon House  
 Ightham, Sevenoaks  
 Kent, TN15 9HZ.  
 Tel +44 (0)1732 880580  
 Fax +44 (0)1732 887013  
 E-mail tsd@hhcelcon.co.uk

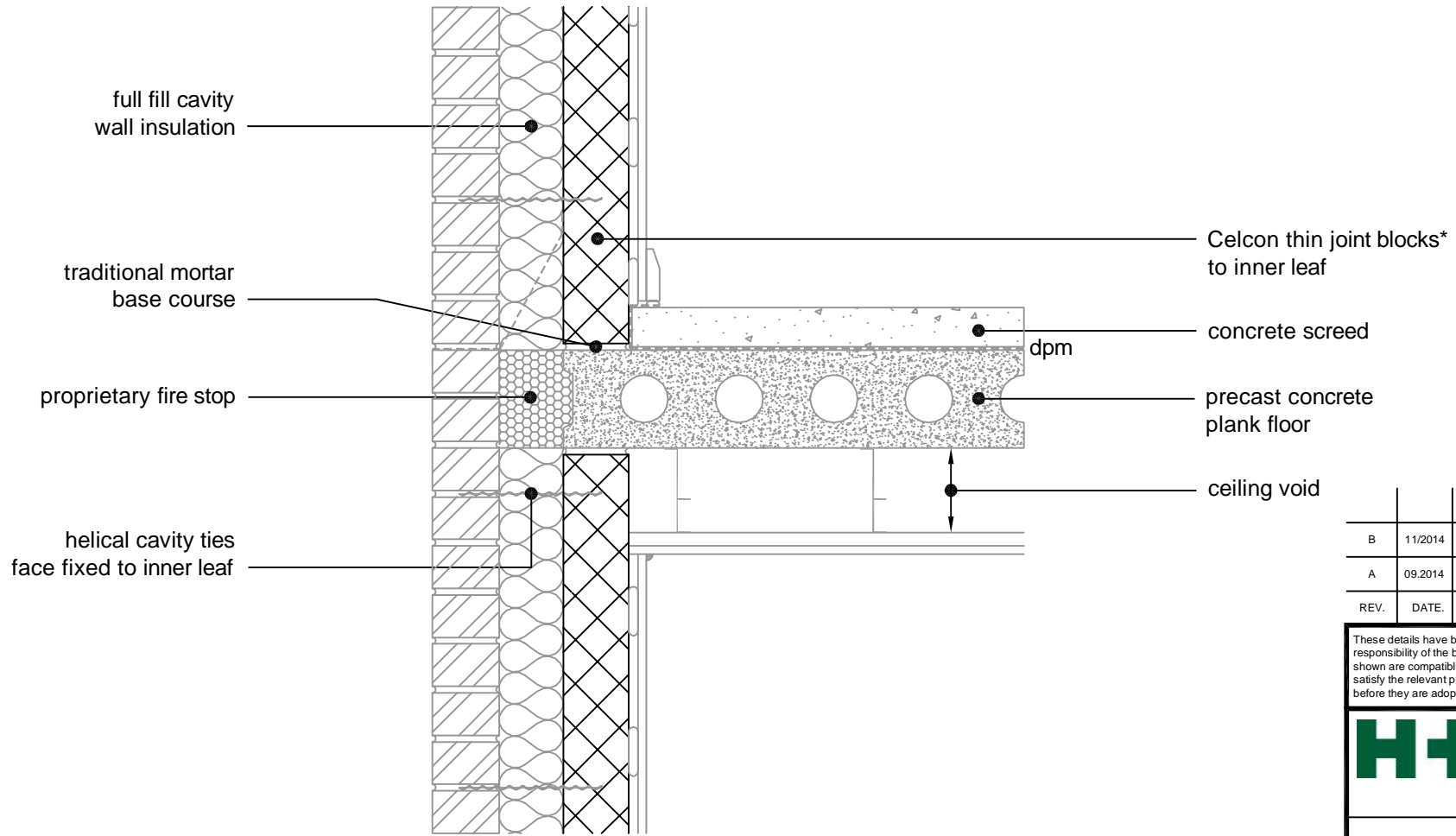
### THIN JOINT

TITLE External Masonry Cavity Wall,  
 Full Fill - Intermediate Timber Floor  
 Within A Dwelling

DWG No. HH-TJ-FF-08

DRAWN BY SJB CHECKED BY AHR

DATE Feb 2013 SCALE 1:100 @ A4 REV.NO. B



full fill cavity wall insulation

traditional mortar base course

proprietary fire stop

helical cavity ties face fixed to inner leaf

Celcon thin joint blocks\* to inner leaf

concrete screed

dpm

precast concrete plank floor

ceiling void

\* Thin joint block formats are:  
 Plus = 630mm x 215mm  
 Jumbo Blok = 630mm x 250mm  
 Multiplate = 630mm x 350mm  
 in 2mm Celfix mortar joints

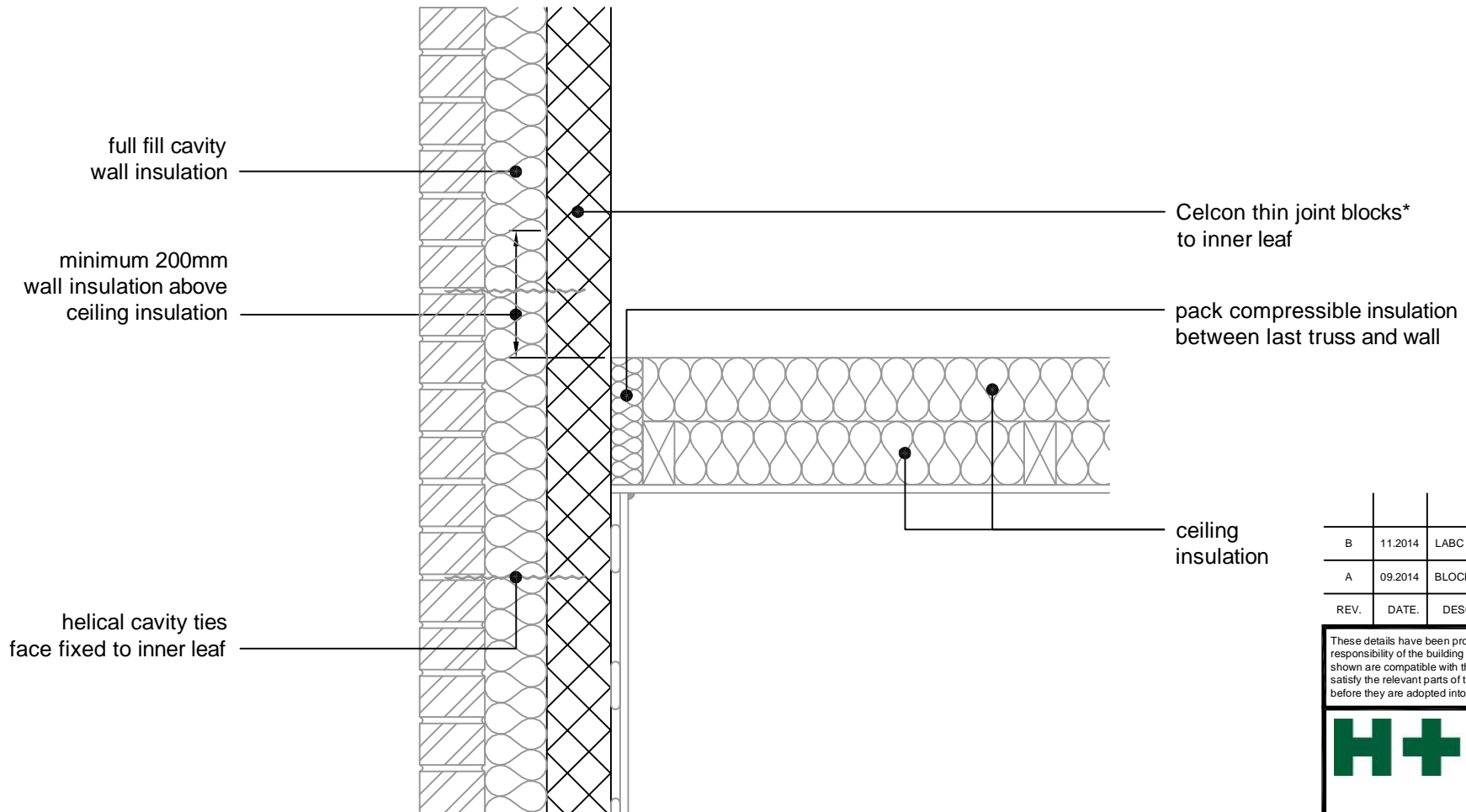
For  $\Psi$  values applicable to this detail, see Constructive Details CD0030 or LABC Registered Construction Details E7MCFF4 - 6.

REV.	DATE	DESCRIPTION	BY.
B	11/2014	PROPRIETARY FIRE STOP NOTE REVISED. LABC NOTE ADDED.	SJB
A	09.2014	BLOCK FORMATS NOTE REVISED	SJB

These details have been produced for guidance only. It is the responsibility of the building designer to ensure that the details shown are compatible with the overall building design and will satisfy the relevant parts of the Building Regulations applicable before they are adopted into the project design.

**H+H** H+H UK Limited  
 Technical Services Dept.  
 Celcon House  
 Ightham, Sevenoaks  
 Kent, TN15 9HZ.  
 Tel +44 (0)1732 880580  
 Fax +44 (0)1732 887013  
 E-mail tsd@hhcelcon.co.uk

THIN JOINT			
TITLE External Masonry Cavity Wall, Full Fill - Precast Concrete Separating Floor Between Dwellings			
DWG No.		HH-TJ-FF-09	
DRAWN BY		CHECKED BY	
SJB		AHR	
DATE	SCALE	REV.NO.	
Feb 2013	1:100 @ A4	B	



\* Thin joint block formats are:  
 Plus = 630mm x 215mm  
 Jumbo Blok = 630mm x 250mm  
 Multiplate = 630mm x 350mm  
 in 2mm Celfix mortar joints

For  $\Psi$  values applicable to this detail,  
 see Constructive Details CD0031  
 or  
 LABC Registered Construction  
 Details E12MCFF4 - 6.

REV.	DATE	DESCRIPTION	BY.
B	11.2014	LABC NOTE ADDED	SJB
A	09.2014	BLOCK FORMATS NOTE REVISED	SJB

These details have been produced for guidance only. It is the responsibility of the building designer to ensure that the details shown are compatible with the overall building design and will satisfy the relevant parts of the Building Regulations applicable before they are adopted into the project design.

**H+H** H+H UK Limited  
 Technical Services Dept.  
 Celcon House  
 Ightham, Sevenoaks  
 Kent, TN15 9HZ.  
 Tel +44 (0)1732 880580  
 Fax +44 (0)1732 887013  
 E-mail tsd@hhcelcon.co.uk

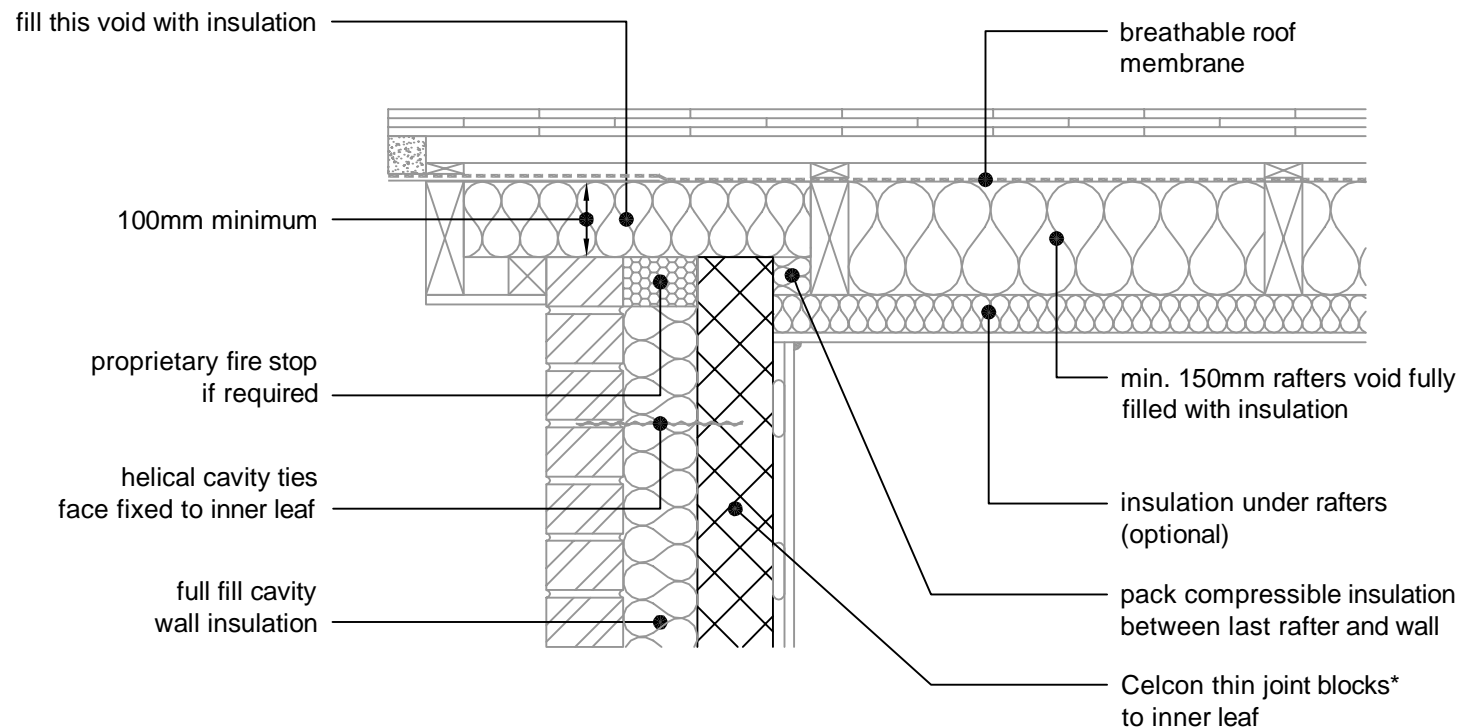
### THIN JOINT

TITLE External Masonry Cavity Wall,  
 Full Fill - Pitched Roof, Gable -  
 Insulation At Ceiling Level, Ventilated Loft

DWG No. HH-TJ-FF-10

DRAWN BY SJB CHECKED BY AHR

DATE Feb 2013 SCALE 1:100 @ A4 REV.NO. B



\* Thin joint block formats are:  
 Plus = 630mm x 215mm  
 Jumbo Blok = 630mm x 250mm  
 Multiplate = 630mm x 350mm  
 in 2mm Celfix mortar joints

For  $\Psi$  values applicable to this detail,  
 see Constructive Details CD0032  
 or  
 LABC Registered Construction  
 Details E13MCFF4 - 6.

REV.	DATE	DESCRIPTION	BY.
C	11.2014	PROPRIETARY FIRE STOP NOTE REVISED. LABC NOTE ADDED.	SJB
B	09.2014	BLOCK FORMATS NOTE REVISED	SJB
A	11/2013	RAFTERS INSULATION THICKNESS NOTE ADDED	SJB

These details have been produced for guidance only. It is the responsibility of the building designer to ensure that the details shown are compatible with the overall building design and will satisfy the relevant parts of the Building Regulations applicable before they are adopted into the project design.

**H+H** H+H UK Limited  
 Technical Services Dept.  
 Celcon House  
 Ightham, Sevenoaks  
 Kent, TN15 9HZ.  
 Tel +44 (0)1732 880580  
 Fax +44 (0)1732 887013  
 E-mail [tsd@hhcelcon.co.uk](mailto:tsd@hhcelcon.co.uk)

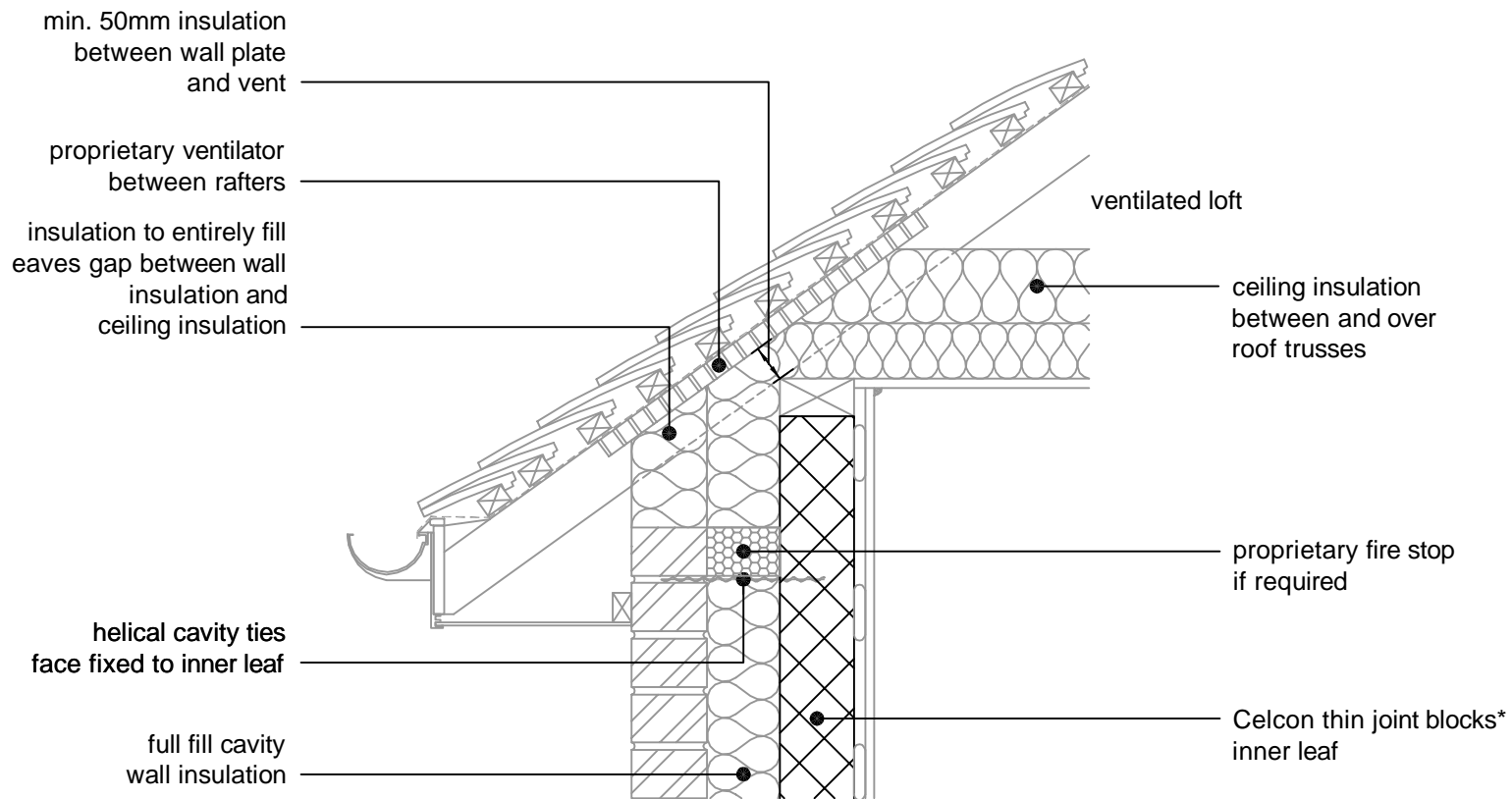
### THIN JOINT

TITLE External Masonry Cavity Wall,  
 Full Fill - Pitched Roof, Gable - Insulation  
 At Rafter Level, Unventilated Rafter Void

DWG No. HH-TJ-FF-11

DRAWN BY SJB CHECKED BY AHR

DATE Feb 2013 SCALE 1:100 @ A4 REV.NO. C



\* Thin joint block formats are:  
 Plus = 630mm x 215mm  
 Jumbo Blok = 630mm x 250mm  
 Multiplate = 630mm x 350mm  
 in 2mm Celfix mortar joints

For  $\Psi$  values applicable to this detail,  
 see Constructive Details CD0033  
 or  
 LABC Registered Construction  
 Details E10MCFF4 - 6.

REV.	DATE	DESCRIPTION	BY.
C	11.2014	PROPRIETARY FIRE STOP NOTE REVISED. LABC NOTE ADDED.	SJB
B	09.2014	BLOCK FORMATS NOTE REVISED	SJB
A	11/2013	WALL PLATE INSULATION COVER NOTE MOVED	SJB

These details have been produced for guidance only. It is the responsibility of the building designer to ensure that the details shown are compatible with the overall building design and will satisfy the relevant parts of the Building Regulations applicable before they are adopted into the project design.

**H+H** H+H UK Limited  
 Technical Services Dept.  
 Celcon House  
 Ightham, Sevenoaks  
 Kent, TN15 9HZ.  
 Tel +44 (0)1732 880580  
 Fax +44 (0)1732 887013  
 E-mail [tsd@hhcelcon.co.uk](mailto:tsd@hhcelcon.co.uk)

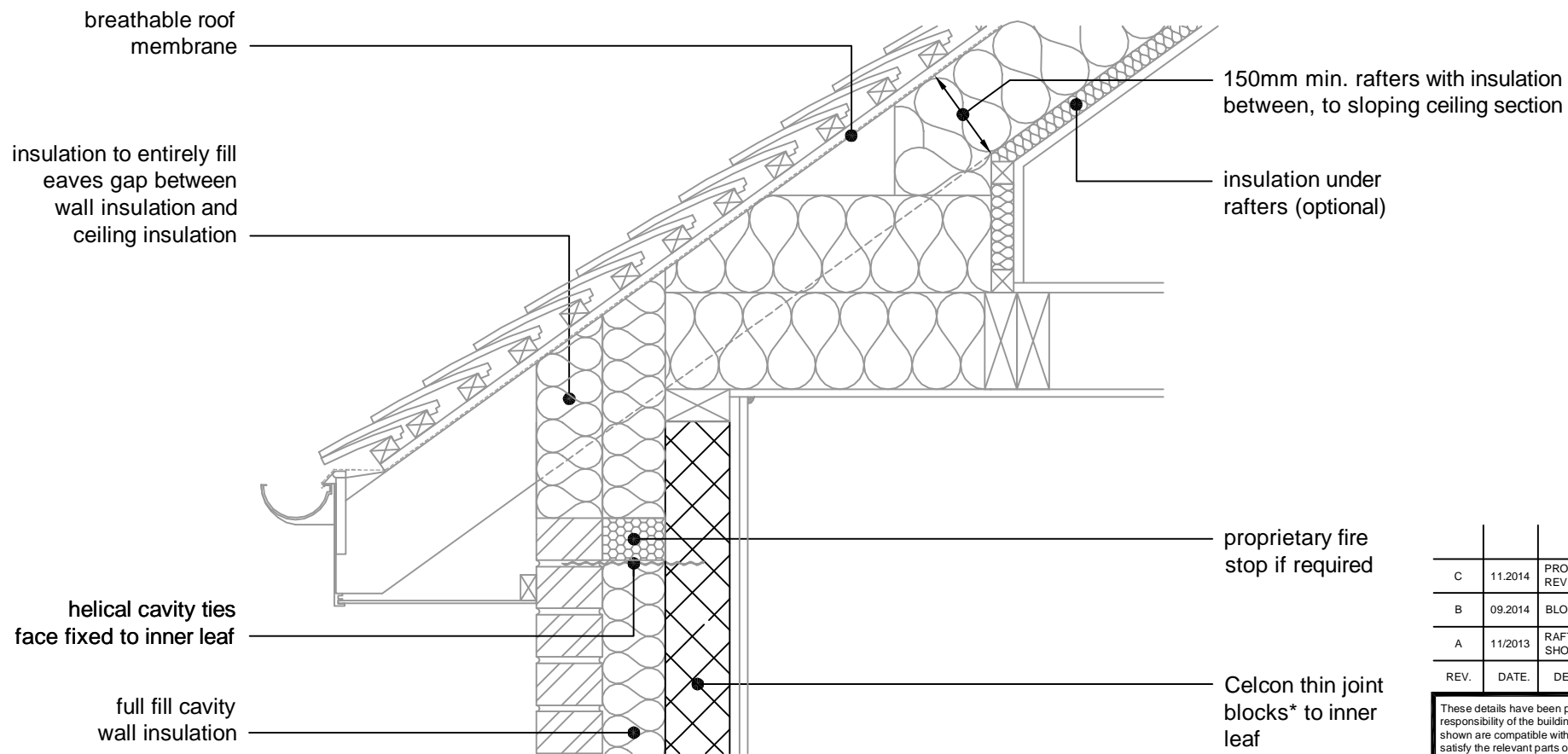
### THIN JOINT

TITLE External Masonry Cavity Wall,  
 Full Fill - Pitched Roof, Eaves - Insulation  
 At Ceiling Level, Ventilated Loft

DWG No. HH-TJ-FF-12

DRAWN BY SJB CHECKED BY AHR

DATE Feb 2013 SCALE 1:100 @ A4 REV.NO. C



\* Thin joint block formats are:  
 Plus = 630mm x 215mm  
 Jumbo Blok = 630mm x 250mm  
 Multiplate = 630mm x 350mm  
 in 2mm Celfix mortar joints

For  $\Psi$  values applicable to this detail,  
 see Constructive Details CD0034.

REV.	DATE	DESCRIPTION	BY
C	11.2014	PROPRIETARY FIRE STOP NOTE REVISED.	SJB
B	09.2014	BLOCK FORMATS NOTE REVISED	SJB
A	11/2013	RAFTERS INSULATION NOW SHOWN AS 150mm.	SJB

These details have been produced for guidance only. It is the responsibility of the building designer to ensure that the details shown are compatible with the overall building design and will satisfy the relevant parts of the Building Regulations applicable before they are adopted into the project design.

**H+H** H+H UK Limited  
 Technical Services Dept.  
 Celcon House  
 Ightham, Sevenoaks  
 Kent, TN15 9HZ.  
 Tel +44 (0)1732 880580  
 Fax +44 (0)1732 887013  
 E-mail tsd@hhcelcon.co.uk

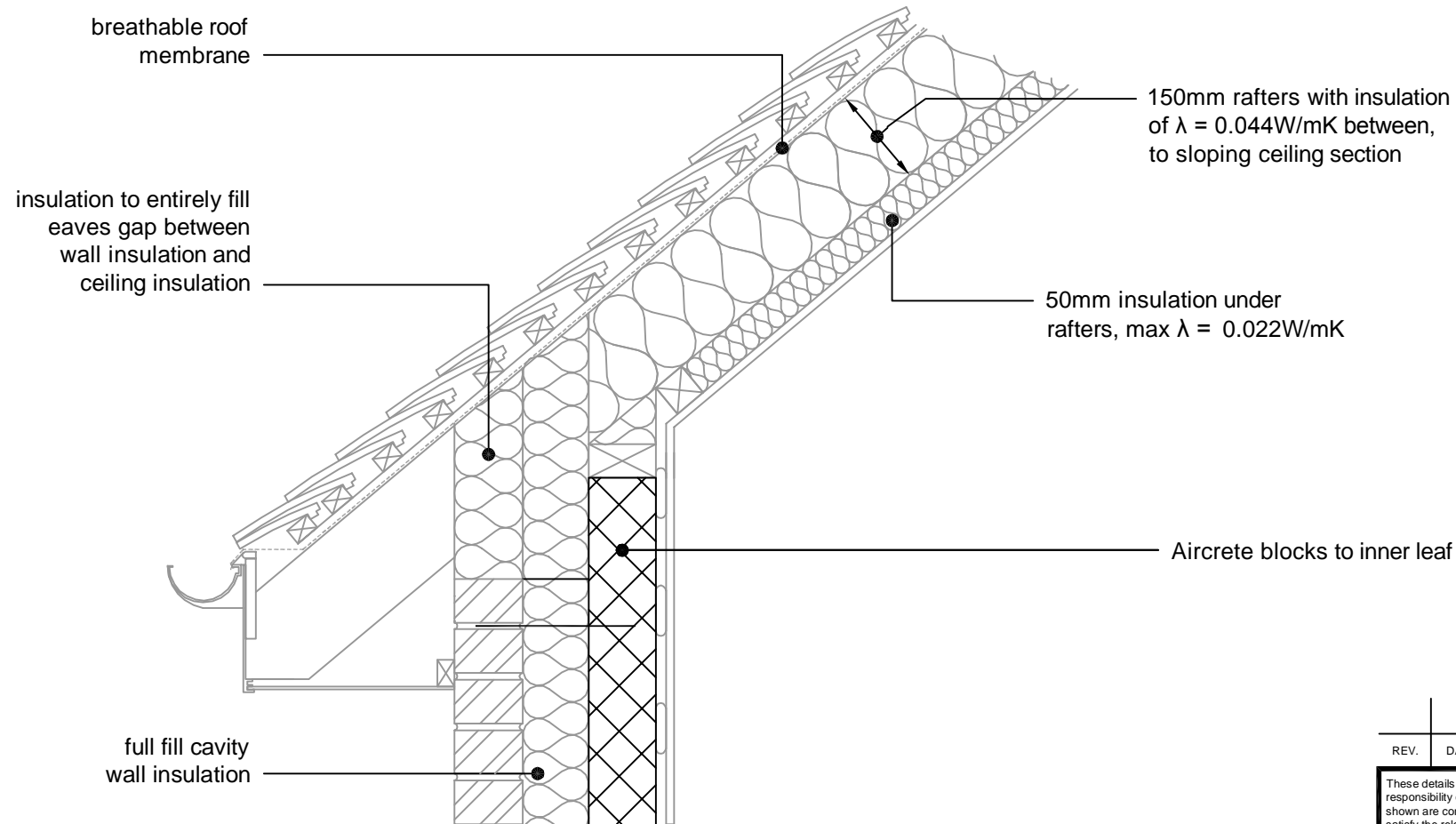
### THIN JOINT

TITLE External Masonry Cavity Wall,  
 Full Fill - Pitched Roof, Eaves - Insulation  
 At Rafter Level, Unventilated Rafter Void

DWG No. HH-TJ-FF-13

DRAWN BY SJB CHECKED BY AHR

DATE Feb 2013 SCALE 1:100 @ A4 REV.NO. C

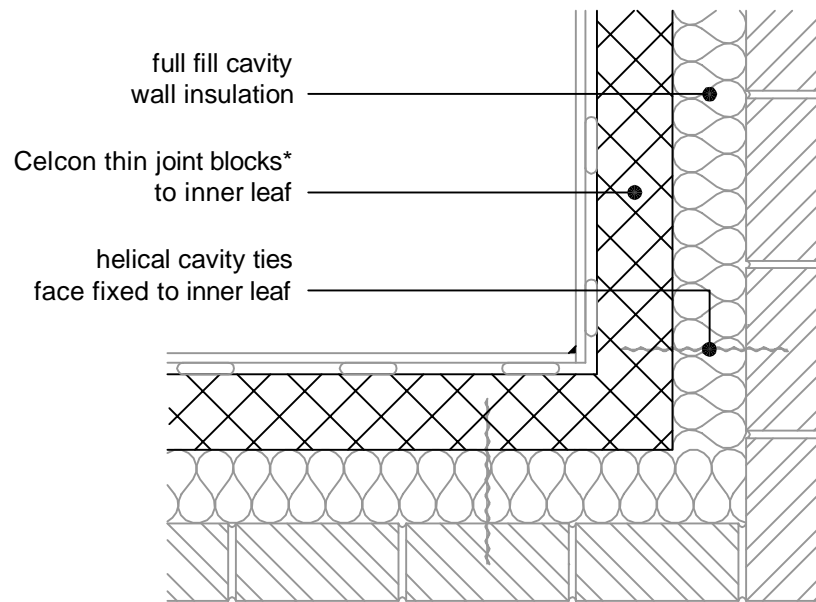


\* Thin joint block formats are:  
 Plus = 630mm x 215mm  
 Jumbo Blok = 630mm x 250mm  
 Multiplate = 630mm x 350mm  
 in 2mm Celfix mortar joints

For  $\Psi$  values applicable to this detail,  
 see LABC Registered Construction  
 Details E11MCFF4 - 6.

REV.	DATE	DESCRIPTION	BY.
<p>These details have been produced for guidance only. It is the responsibility of the building designer to ensure that the details shown are compatible with the overall building design and will satisfy the relevant parts of the Building Regulations applicable before they are adopted into the project design.</p>			
		<p>H+H UK Limited            Technical Services Dept.            Celcon House            Ightham, Sevenoaks            Kent, TN15 9HZ.            Tel +44 (0)1732 880580            Fax +44 (0)1732 887013            E-mail tsd@hhcelcon.co.uk</p>	
<b>THIN JOINT</b>			
<p>TITLE External Masonry Cavity Wall,            Full Fill - Pitched Roof, Eaves - Insulation            At Rafter Level, Unventilated Rafter Void</p>			
DRAWN BY		CHECKED BY	
SJB		AHR	
DATE	SCALE	REV.NO.	
Nov 2014	1:100 @ A4	0	





\* Thin joint block formats are:  
 Plus = 630mm x 215mm  
 Jumbo Blok = 630mm x 250mm  
 Multiplate = 630mm x 350mm  
 in 2mm Celfix mortar joints

For  $\Psi$  values applicable to this detail,  
 see Constructive Details CD0035  
 or  
 LABC Registered Construction  
 Details E16MCFF4 - 6.

B	11.2014	LABC NOTE ADDED	SJB
A	09.2014	BLOCK FORMATS NOTE REVISED	SJB
REV.	DATE	DESCRIPTION	BY.

These details have been produced for guidance only. It is the responsibility of the building designer to ensure that the details shown are compatible with the overall building design and will satisfy the relevant parts of the Building Regulations applicable before they are adopted into the project design.

**H+H** H+H UK Limited  
 Technical Services Dept.  
 Celcon House  
 Ightham, Sevenoaks  
 Kent, TN15 9HZ.  
 Tel +44 (0)1732 880580  
 Fax +44 (0)1732 887013  
 E-mail [tsd@hhcelcon.co.uk](mailto:tsd@hhcelcon.co.uk)

**THIN JOINT**

TITLE  
 External Masonry Cavity Wall,  
 Full Fill - Normal Corner

DWG No. **HH-TJ-FF-14**

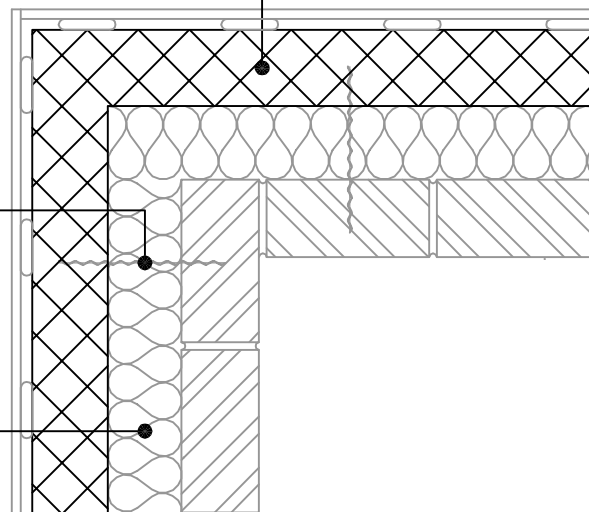
DRAWN BY **SJB** CHECKED BY **AHR**

DATE **Feb 2013** SCALE **1:100 @ A4** REV.NO. **B**

Celcon thin joint blocks\*  
to inner leaf

helical cavity ties  
face fixed to inner leaf

full fill cavity  
wall insulation



\* Thin joint block formats are:  
Plus = 630mm x 215mm  
Jumbo Blok = 630mm x 250mm  
Multiplate = 630mm x 350mm  
in 2mm Celfix mortar joints

For  $\Psi$  values applicable to this detail,  
see Constructive Details CD0036  
or  
LABC Registered Construction  
Details E17MCFF4 - 6.

REV.	DATE	DESCRIPTION	BY.
B	11.2014	LABC NOTE ADDED	SJB
A	09.2014	BLOCK FORMATS NOTE REVISED	SJB

These details have been produced for guidance only. It is the responsibility of the building designer to ensure that the details shown are compatible with the overall building design and will satisfy the relevant parts of the Building Regulations applicable before they are adopted into the project design.

**H+H** H+H UK Limited  
Technical Services Dept.  
Celcon House  
Ightham, Sevenoaks  
Kent, TN15 9HZ.  
Tel +44 (0)1732 880580  
Fax +44 (0)1732 887013  
E-mail tsd@hhcelcon.co.uk

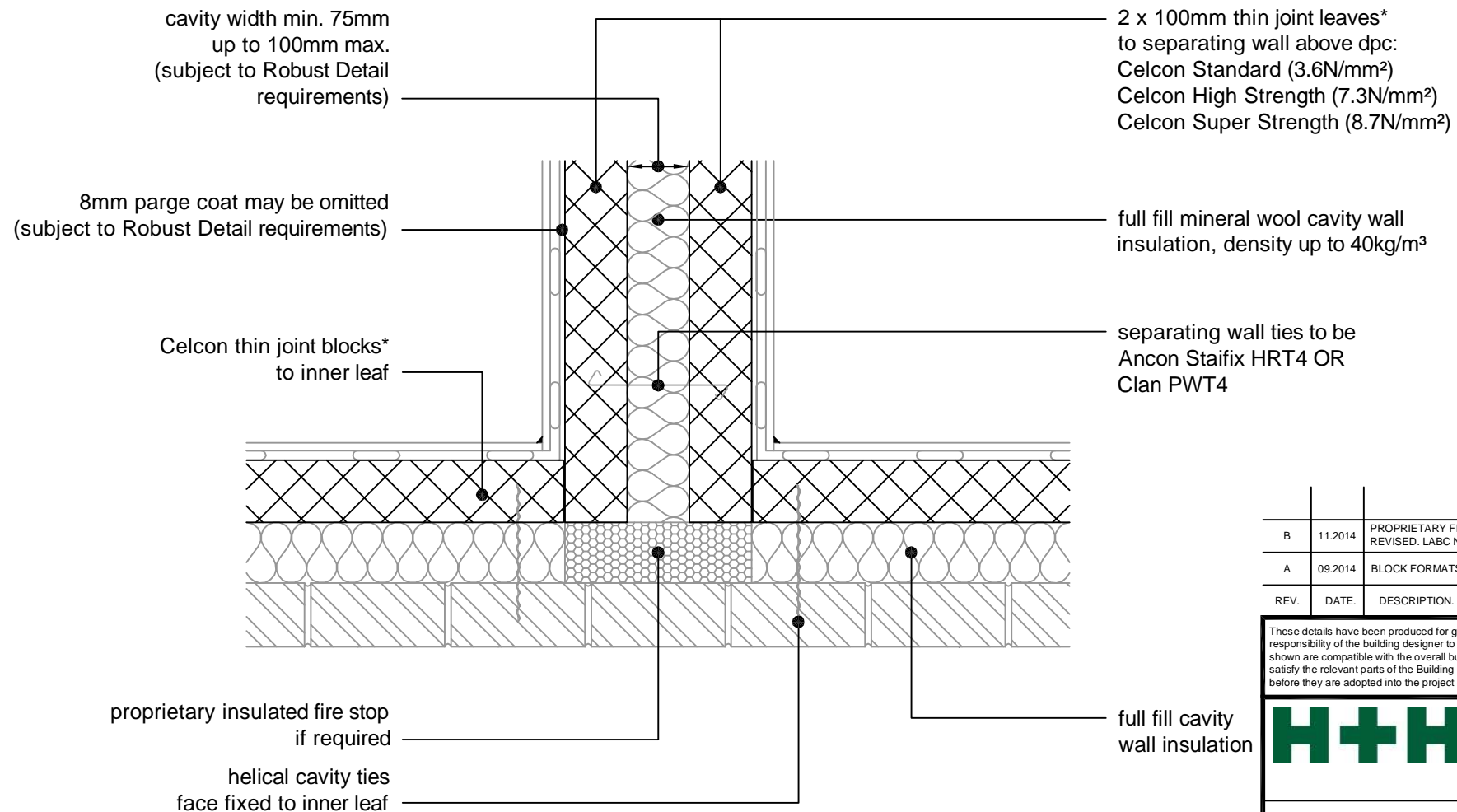
### THIN JOINT

TITLE  
External Masonry Cavity Wall,  
Full Fill - Inverted Corner

DWG No. HH-TJ-FF-15

DRAWN BY SJB CHECKED BY AHR

DATE Feb 2013 SCALE 1:100 @ A4 REV.NO. B



\* Thin joint block formats are:  
 Plus = 630mm x 215mm  
 Jumbo Blok = 630mm x 250mm  
 Multiplate = 630mm x 350mm  
 in 2mm Celfix mortar joints

For  $\Psi$  values applicable to this detail,  
 see Constructive Details CD0037  
 or  
 LABC Registered Construction  
 Details E18MCFF7 - 10.

REV.	DATE	DESCRIPTION	BY.
B	11.2014	PROPRIETARY FIRE STOP NOTE REVISED. LABC NOTE ADDED.	SJB
A	09.2014	BLOCK FORMATS NOTE REVISED	SJB

These details have been produced for guidance only. It is the responsibility of the building designer to ensure that the details shown are compatible with the overall building design and will satisfy the relevant parts of the Building Regulations applicable before they are adopted into the project design.

**H+H** H+H UK Limited  
 Technical Services Dept.  
 Celcon House  
 Ightham, Sevenoaks  
 Kent, TN15 9HZ.  
 Tel +44 (0)1732 880580  
 Fax +44 (0)1732 887013  
 E-mail [tsd@hhcelcon.co.uk](mailto:tsd@hhcelcon.co.uk)

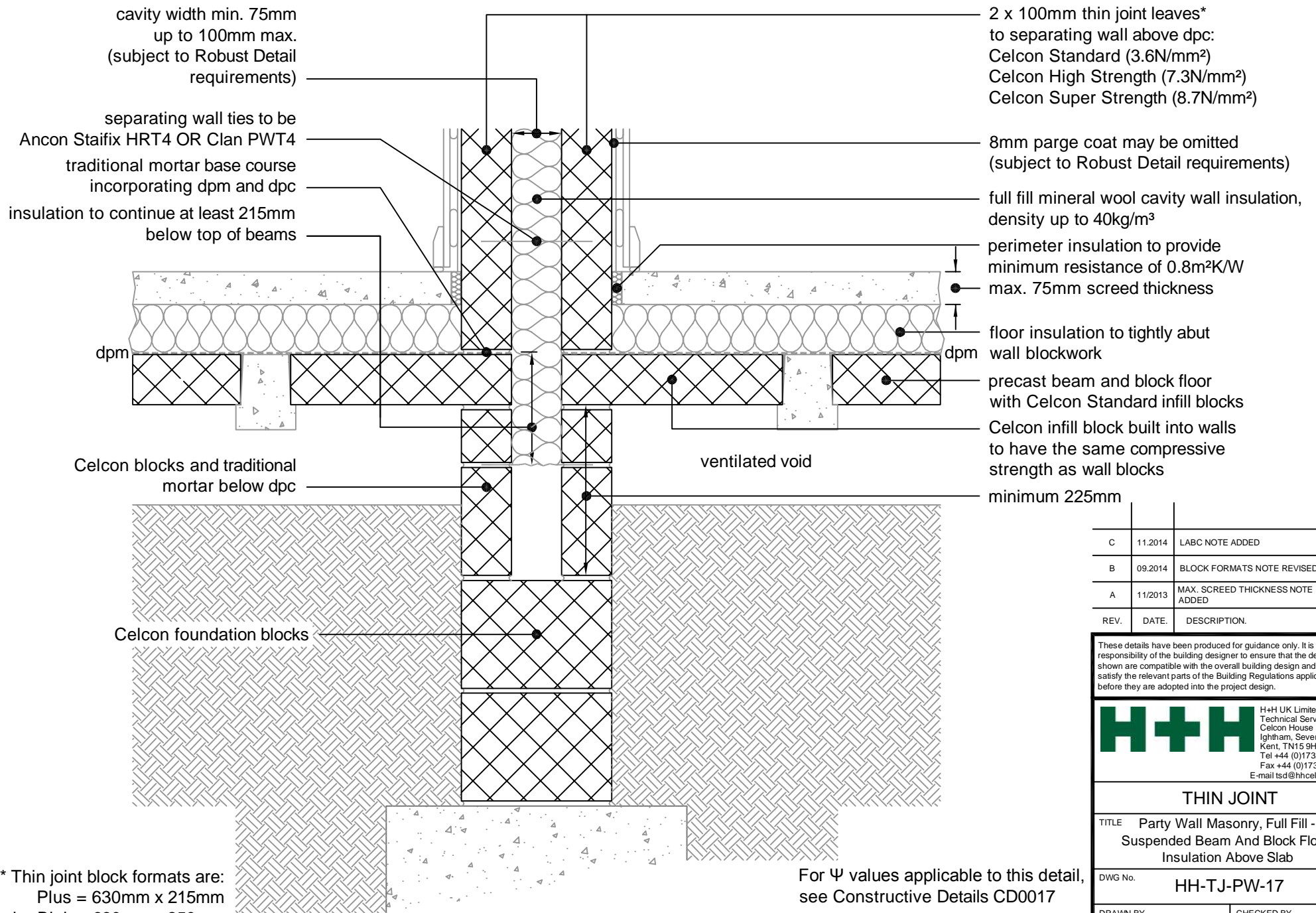
### THIN JOINT

TITLE  
 External Masonry Cavity Wall,  
 Full Fill - Party Wall Between Dwellings

DWG No. **HH-TJ-FF-16**

DRAWN BY **SJB** CHECKED BY **AHR**

DATE **Feb 2013** SCALE **1:100 @ A4** REV.NO. **B**



REV.	DATE	DESCRIPTION	BY.
C	11.2014	LABC NOTE ADDED	SJB
B	09.2014	BLOCK FORMATS NOTE REVISED	SJB
A	11/2013	MAX. SCREED THICKNESS NOTE ADDED	SJB

These details have been produced for guidance only. It is the responsibility of the building designer to ensure that the details shown are compatible with the overall building design and will satisfy the relevant parts of the Building Regulations applicable before they are adopted into the project design.

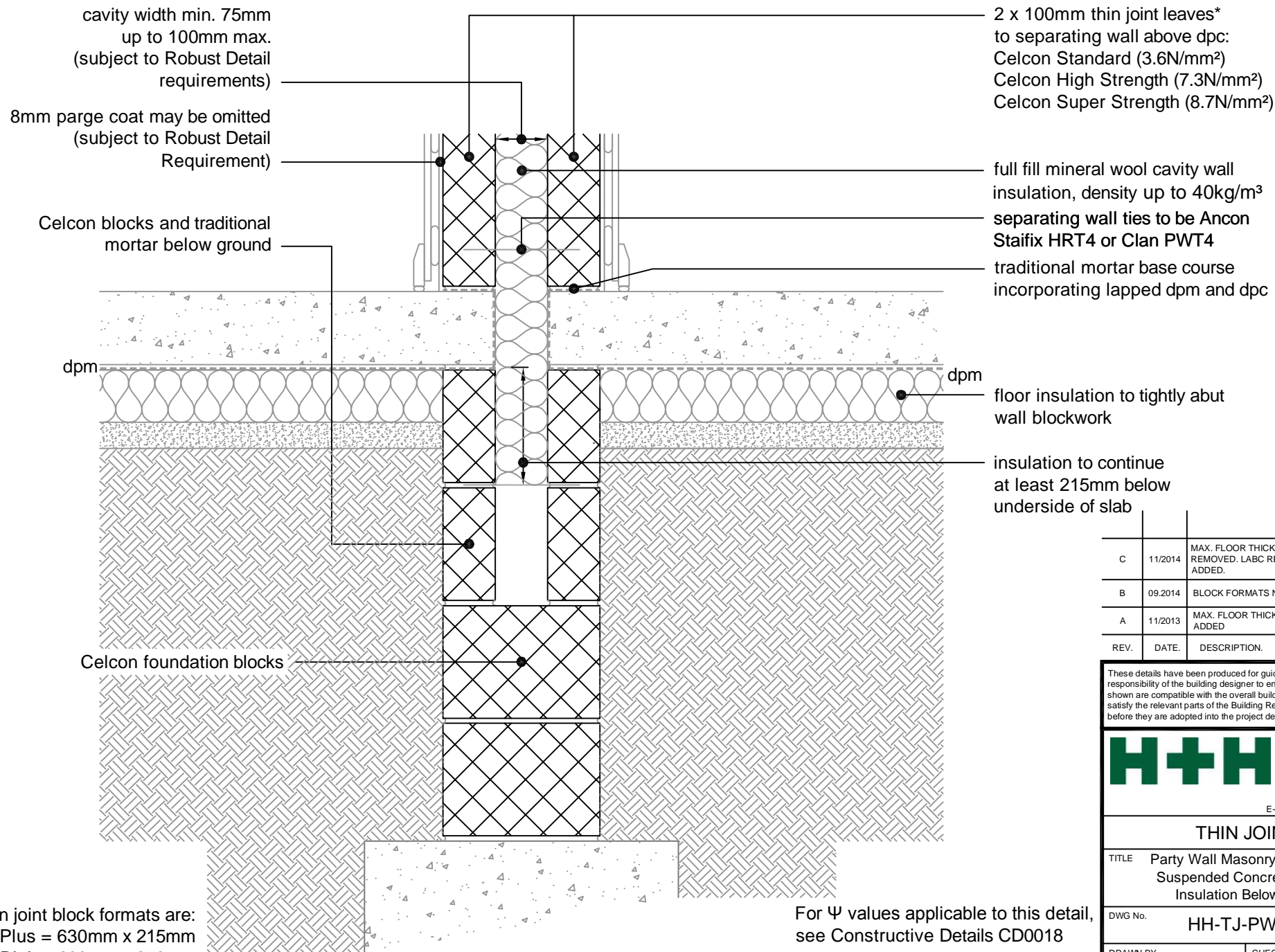
**H+H** H+H UK Limited  
 Technical Services Dept.  
 Celcon House  
 Ightham, Sevenoaks  
 Kent, TN15 9HZ.  
 Tel +44 (0)1732 880580  
 Fax +44 (0)1732 887013  
 E-mail tsd@hhcelcon.co.uk

**THIN JOINT**

TITLE Party Wall Masonry, Full Fill - Suspended Beam And Block Floor, Insulation Above Slab		
DWG No. HH-TJ-PW-17		
DRAWN BY SJB	CHECKED BY AHR	
DATE Nov 2012	SCALE 1:100 @ A4	REV.NO. C

\* Thin joint block formats are:  
 Plus = 630mm x 215mm  
 Jumbo Blok = 630mm x 250mm  
 Multiplate = 630mm x 350mm  
 in 2mm Celfix mortar joints

For  $\Psi$  values applicable to this detail,  
 see Constructive Details CD0017  
 or  
 LABC Registered Construction  
 Details P1PCFF1 - 2.



\* Thin joint block formats are:  
Plus = 630mm x 215mm  
Jumbo Blok = 630mm x 250mm  
Multiplate = 630mm x 350mm  
in 2mm Celfix mortar joints

For  $\Psi$  values applicable to this detail,  
see Constructive Details CD0018  
or  
LABC Registered Construction  
Details P1PCFF3 - 4.

REV.	DATE	DESCRIPTION	BY.
C	11/2014	MAX. FLOOR THICKNESS NOTE REMOVED, LABC REFERENCE ADDED.	SJB
B	09.2014	BLOCK FORMATS NOTE REVISED	SJB
A	11/2013	MAX. FLOOR THICKNESS NOTE ADDED	SJB

These details have been produced for guidance only. It is the responsibility of the building designer to ensure that the details shown are compatible with the overall building design and will satisfy the relevant parts of the Building Regulations applicable before they are adopted into the project design.

**H+H** H+H UK Limited  
Technical Services Dept.  
Celcon House  
Ightham, Sevenoaks  
Kent, TN15 9HZ.  
Tel +44 (0)1732 880580  
Fax +44 (0)1732 887013  
E-mail tsd@hhcelcon.co.uk

**THIN JOINT**

TITLE	Party Wall Masonry, Full Fill - Suspended Concrete Floor, Insulation Below Slab		
DWG No.	HH-TJ-PW-18		
DRAWN BY	SJB	CHECKED BY	AHR
DATE	Nov 2012	SCALE	1:100 @ A4
		REV.NO.	C

cavity width min. 75mm  
up to 100mm max.  
(subject to Robust Detail  
requirements)

8mm parge coat may be omitted  
(subject to Robust Detail  
Requirement)

traditional mortar base course  
incorporating lapped dpm and dpc  
Celcon blocks and traditional  
mortar below ground

dpm

Celcon foundation blocks

2 x 100mm thin joint leaves\*  
to separating wall above dpc:  
Celcon Standard (3.6N/mm<sup>2</sup>)  
Celcon High Strength (7.3N/mm<sup>2</sup>)  
Celcon Super Strength (8.7N/mm<sup>2</sup>)

separating wall ties to be Ancon  
Staifix HRT4 or Clan PWT4

full fill mineral wool cavity wall  
insulation, density up to 40kg/m<sup>3</sup>

perimeter insulation to provide  
minimum resistance of 0.8m<sup>2</sup>K/W

floor insulation to tightly abut  
wall blockwork

insulation to continue at least  
215mm below underside of slab

dpm

REV.	DATE	DESCRIPTION	BY.
C	11/2014	MAX. FLOOR THICKNESS NOTE REMOVED. LABC REFERENCE ADDED.	SJB
B	09/2014	BLOCK FORMATS NOTE REVISED	SJB
A	11/2013	MAX. FLOOR THICKNESS NOTE ADDED	SJB

These details have been produced for guidance only. It is the responsibility of the building designer to ensure that the details shown are compatible with the overall building design and will satisfy the relevant parts of the Building Regulations applicable before they are adopted into the project design.

**H+H** H+H UK Limited  
Technical Services Dept.  
Celcon House  
Ightham, Sevenoaks  
Kent, TN15 9HZ  
Tel +44 (0)1732 880580  
Fax +44 (0)1732 887013  
E-mail tsd@hhcelcon.co.uk

**THIN JOINT**

TITLE Party Wall Masonry, Full Fill -  
In-situ Concrete Ground Bearing Floor,  
Insulation Below Slab

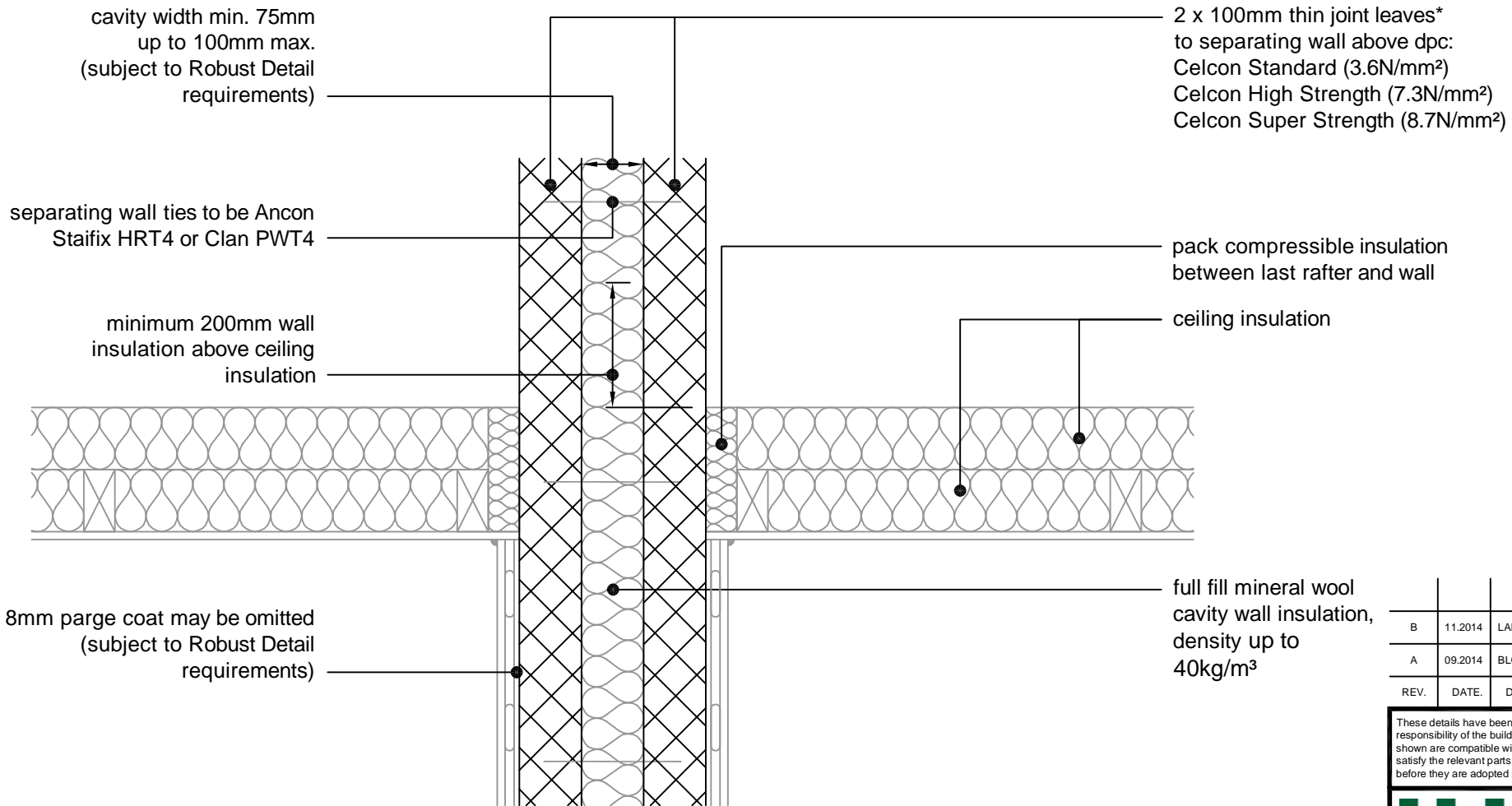
DWG No. HH-TJ-PW-19

DRAWN BY SJB CHECKED BY AHR

DATE Nov 2012 SCALE 1:100 @ A4 REV.NO. C

\* Thin joint block formats are:  
Plus = 630mm x 215mm  
Jumbo Blok = 630mm x 250mm  
Multiplate = 630mm x 350mm  
in 2mm Celfix mortar joints

For  $\Psi$  values applicable to this detail,  
see Constructive Details CD0019  
or  
LABC Registered Construction  
Details P1PCFF5 - 6.



cavity width min. 75mm  
up to 100mm max.  
(subject to Robust Detail  
requirements)

2 x 100mm thin joint leaves\*  
to separating wall above dpc:  
Celcon Standard (3.6N/mm<sup>2</sup>)  
Celcon High Strength (7.3N/mm<sup>2</sup>)  
Celcon Super Strength (8.7N/mm<sup>2</sup>)

separating wall ties to be Ancon  
Staifix HRT4 or Clan PWT4

pack compressible insulation  
between last rafter and wall

minimum 200mm wall  
insulation above ceiling  
insulation

ceiling insulation

8mm parge coat may be omitted  
(subject to Robust Detail  
requirements)

full fill mineral wool  
cavity wall insulation,  
density up to  
40kg/m<sup>3</sup>

B	11.2014	LABC NOTE ADDED	SJB
A	09.2014	BLOCK FORMATS NOTE REVISED	SJB
REV.	DATE.	DESCRIPTION.	BY.

These details have been produced for guidance only. It is the responsibility of the building designer to ensure that the details shown are compatible with the overall building design and will satisfy the relevant parts of the Building Regulations applicable before they are adopted into the project design.

**H+H** H+H UK Limited  
Technical Services Dept.  
Celcon House  
Ightham, Sevenoaks  
Kent, TN15 9HZ.  
Tel +44 (0)1732 880580  
Fax +44 (0)1732 887013  
E-mail tsd@hhcelcon.co.uk

**THIN JOINT**

TITLE Party Wall Masonry, Full Fill -  
Roof, Insulated At Ceiling Level,  
Ventilated Loft

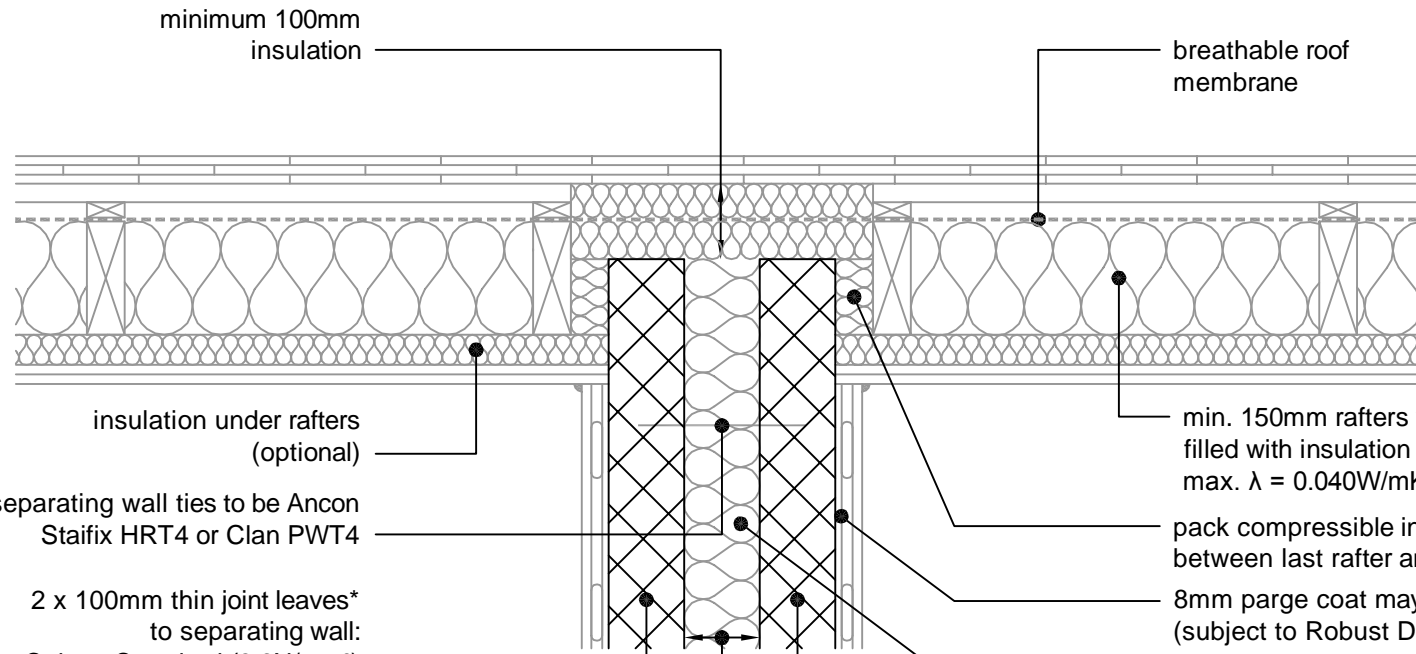
DWG No. HH-TJ-PW-20

DRAWN BY SJB CHECKED BY AHR

DATE Nov 2012 SCALE 1:100 @ A4 REV.NO. B

\* Thin joint block formats are:  
Plus = 630mm x 215mm  
Jumbo Blok = 630mm x 250mm  
Multiplate = 630mm x 350mm  
in 2mm Celfix mortar joints

For  $\Psi$  values applicable to this detail,  
see Constructive Details CD0020  
or  
LABC Registered Construction  
Details P4PCFF1 - 2.



cavity width min. 75mm, up to 100mm max.  
(subject to Robust Detail requirements)

2 x 100mm thin joint leaves\*  
to separating wall:  
Celcon Standard (3.6N/mm<sup>2</sup>)  
Celcon High Strength (7.3N/mm<sup>2</sup>)  
Celcon Super Strength (8.7N/mm<sup>2</sup>)

\* Thin joint block formats are:  
Plus = 630mm x 215mm  
Jumbo Blok = 630mm x 250mm  
Multiplate = 630mm x 350mm  
in 2mm Celfix mortar joints

For  $\Psi$  values applicable to this detail,  
see Constructive Details CD0021  
or  
LABC Registered Construction  
Details P5PCFF1 - 2.

REV.	DATE.	DESCRIPTION.	BY.
C	11.2014	LABC NOTE ADDED	SJB
B	09.2014	BLOCK FORMATS NOTE REVISED	SJB
A	11/2013	RAFTERS INSULATION THICKNESS NOTE ADDED	SJB

These details have been produced for guidance only. It is the responsibility of the building designer to ensure that the details shown are compatible with the overall building design and will satisfy the relevant parts of the Building Regulations applicable before they are adopted into the project design.



H+H UK Limited  
Technical Services Dept.  
Celcon House  
Ightham, Sevenoaks  
Kent, TN15 9HZ.  
Tel +44 (0)1732 880580  
Fax +44 (0)1732 887013  
E-mail tsd@hhcelcon.co.uk

**THIN JOINT**

TITLE Party Wall Masonry, Full Fill - Roof, Insulated At Rafter Level, Unventilated Rafter Void		
DWG No. HH-TJ-PW-21		
DRAWN BY SJB	CHECKED BY AHR	
DATE Nov 2012	SCALE 1:100 @ A4	REV.NO. C