

Detail Ref.	Detail Title
HH-TJ-PF-01	External Masonry Cavity Wall, Partial-Fill - Suspended Beam And Block Floor, Insulation Above Slab
HH-TJ-PF-02	External Masonry Cavity Wall, Partial-Fill - Suspended In-Situ Concrete Floor, Insulation Below Slab
HH-TJ-PF-03	External Masonry Cavity Wall, Partial-Fill - Concrete Ground Bearing Floor, Insulation Below Slab
HH-TJ-PF-04	External Masonry Cavity Wall, Partial-Fill - Independent Lintel
HH-TJ-PF-05	External Masonry Cavity Wall, Partial-Fill - Steel Lintel, Perforated Base Plate, (Insulated Soffit)
HH-TJ-PF-22	External Masonry Cavity Wall, Partial-Fill - Steel Lintel, Open Back (no continuous base plate)
HH-TJ-PF-06	External Masonry Cavity Wall, Partial-Fill - Sill
HH-TJ-PF-07	External Masonry Cavity Wall, Partial-Fill - Jamb
HH-TJ-PF-08	External Masonry Cavity Wall, Partial-Fill - Intermediate Timber Floor Within A Dwelling
HH-TJ-PF-09	External Masonry Cavity Wall, Partial-Fill - Precast Concrete Separating Floor Between Dwellings
HH-TJ-PF-10	External Masonry Cavity Wall, Partial-Fill - Pitched Roof, Gable, Insulation At Ceiling Level, Ventilated Loft
HH-TJ-PF-11	External Masonry Cavity Wall, Partial-Fill - Pitched Roof, Gable, Insulation At Rafter Level, Unventilated Rafter Void
HH-TJ-PF-12	External Masonry Cavity Wall, Partial-Fill - Pitched Roof, Eaves, Insulation At Ceiling Level, Ventilated Loft
HH-TJ-PF-13	External Masonry Cavity Wall, Partial-Fill - Pitched Roof, Eaves, Insulation At Rafter Level, Unventilated Rafter Void
HH-TJ-PF-23	External Masonry Cavity Wall, Partial Fill - Pitched Roof, Eaves - Insulation At Rafter Level, Unventilated Rafter Void
HH-TJ-PF-14	External Masonry Cavity Wall, Partial-Fill - Normal Corner
HH-TJ-PF-15	External Masonry Cavity Wall, Partial-Fill - Inverted Corner
HH-TJ-PF-16	External Masonry Cavity Wall, Partial-Fill - Party Wall Between Dwellings
HH-TJ-PW-17	Party Wall Masonry, Full Fill - Suspended Beam And Block Floor, Insulation Above Slab
HH-TJ-PW-18	Party Wall Masonry, Full Fill - Suspended Concrete Floor, Insulation Below Slab
HH-TJ-PW-19	Party Wall Masonry, Full Fill - In-Situ Concrete Ground Bearing Floor, Insulation Below Slab
HH-TJ-PW-20	Party Wall Masonry, Full Fill - Roof, Insulation At Ceiling Level, Ventilated Loft
HH-TJ-PW-21	Party Wall Masonry, Full Fill - Roof, Insulation At Rafter Level, Unventilated Rafter Void

REV.	DATE	DESCRIPTION	BY
A	11/2014	HH-TJ-PF-22 & HH-TJ-PF-23 ADDED	SJB

These details have been produced for guidance only. It is the responsibility of the building designer to ensure that the details shown are compatible with the overall building design and will satisfy the relevant parts of the Building Regulations applicable before they are adopted into the project design.

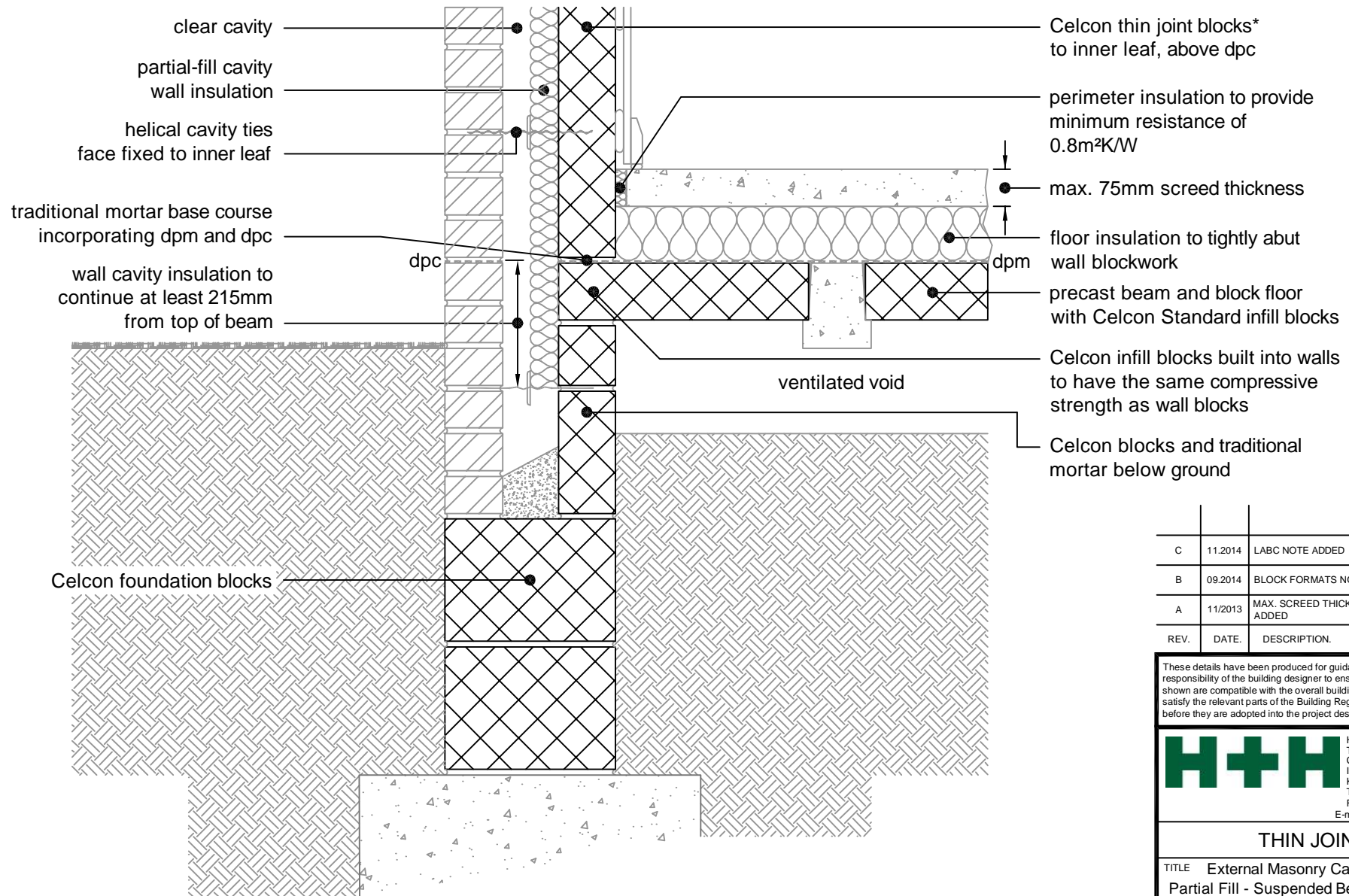
H+H H+H UK Limited
 Technical Services Dept.
 Celcon House
 Ightham, Sevenoaks
 Kent, TN15 9HZ
 Tel +44 (0)1732 880580
 Fax +44 (0)1732 887013
 E-mail tsd@hhcelcon.co.uk

TITLE **Thin Joint Junction Details
(partial Fill)**

DWG No. **INDEX**

DRAWN BY **SJB** CHECKED BY **AHR**

DATE **Nov 2012** SCALE **N.T.S.** REV.NO. **A**



* Thin joint block formats are:
 Plus = 630mm x 215mm
 Jumbo Blok = 630mm x 250mm
 Multiplate = 630mm x 350mm
 in 2mm Celfix mortar joints

For Ψ values applicable to this detail,
 see Constructive Details CD0001
 or
 LABC Registered Construction
 Details E5MCPF16 - 21.

REV.	DATE.	DESCRIPTION.	BY.
C	11.2014	LABC NOTE ADDED	SJB
B	09.2014	BLOCK FORMATS NOTE REVISED	SJB
A	11/2013	MAX. SCREED THICKNESS NOTE ADDED	SJB

These details have been produced for guidance only. It is the responsibility of the building designer to ensure that the details shown are compatible with the overall building design and will satisfy the relevant parts of the Building Regulations applicable before they are adopted into the project design.

H+H H+H UK Limited
 Technical Services Dept.
 Celcon House
 Ightham, Sevenoaks
 Kent, TN15 9HZ.
 Tel +44 (0)1732 880580
 Fax +44 (0)1732 887013
 E-mail tsd@hhcelcon.co.uk

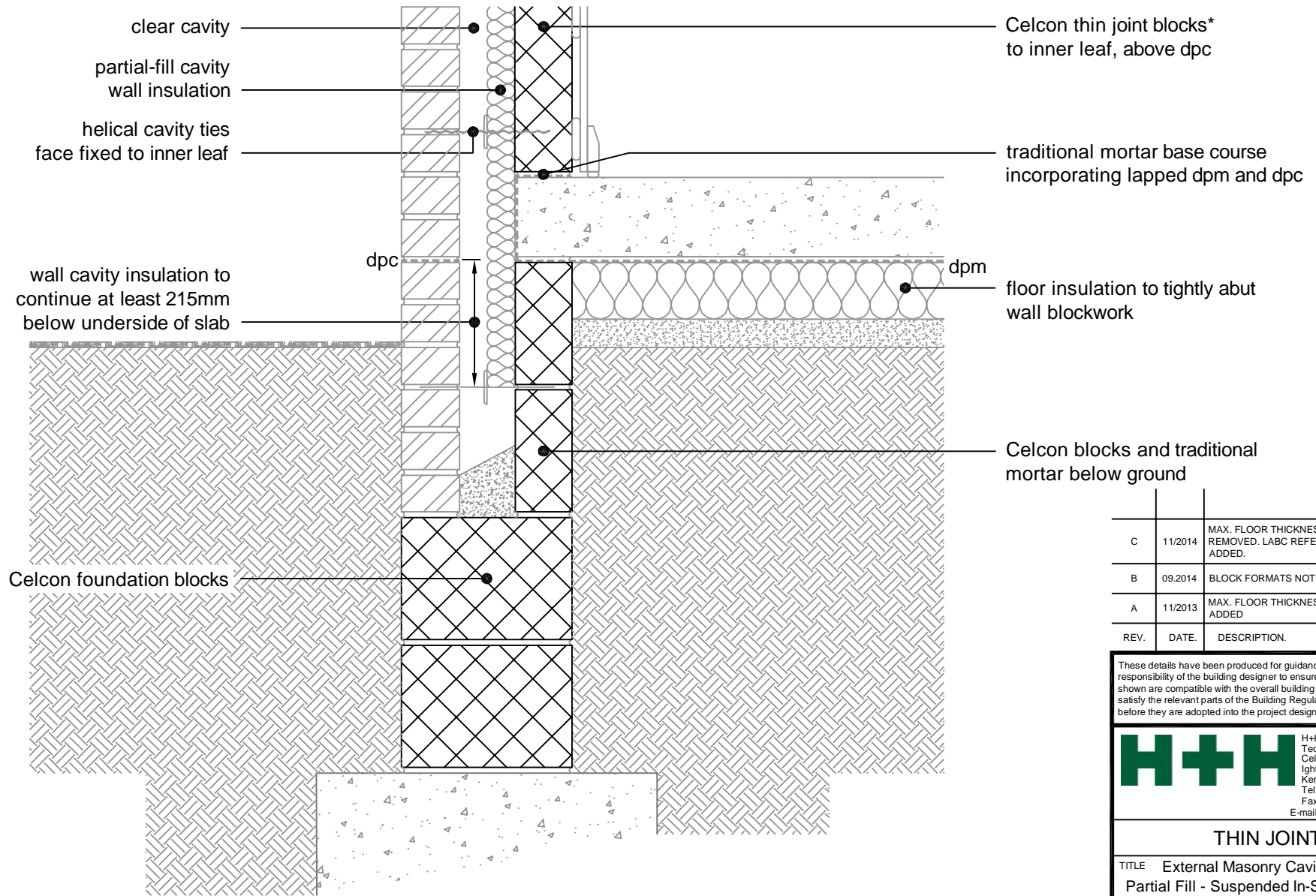
THIN JOINT

TITLE External Masonry Cavity Wall,
 Partial Fill - Suspended Beam And Block
 Floor, Insulation Above Slab

DWG No. HH-TJ-PF-01

DRAWN BY SJB CHECKED BY AHR

DATE Nov 2012 SCALE 1:100 @ A4 REV.NO. C



* Thin joint block formats are:
 Plus = 630mm x 215mm
 Jumbo Blok = 630mm x 250mm
 Multiplate = 630mm x 350mm
 in 2mm Celfix mortar joints

For Ψ values applicable to this detail,
 see Constructive Details CD0002
 or
 LABC Registered Construction
 Details E5MCPF28 - 33.

REV.	DATE	DESCRIPTION	BY.
C	11/2014	MAX. FLOOR THICKNESS NOTE REMOVED. LABC REFERENCE ADDED.	SJB
B	09/2014	BLOCK FORMATS NOTE REVISED	SJB
A	11/2013	MAX. FLOOR THICKNESS NOTE ADDED	SJB

These details have been produced for guidance only. It is the responsibility of the building designer to ensure that the details shown are compatible with the overall building design and will satisfy the relevant parts of the Building Regulations applicable before they are adopted into the project design.

H+H H+H UK Limited
 Technical Services Dept.
 Celcon House
 Ightham, Sevenoaks
 Kent, TN15 9HZ
 Tel +44 (0)1732 880580
 Fax +44 (0)1732 887013
 E-mail tsd@hhcelcon.co.uk

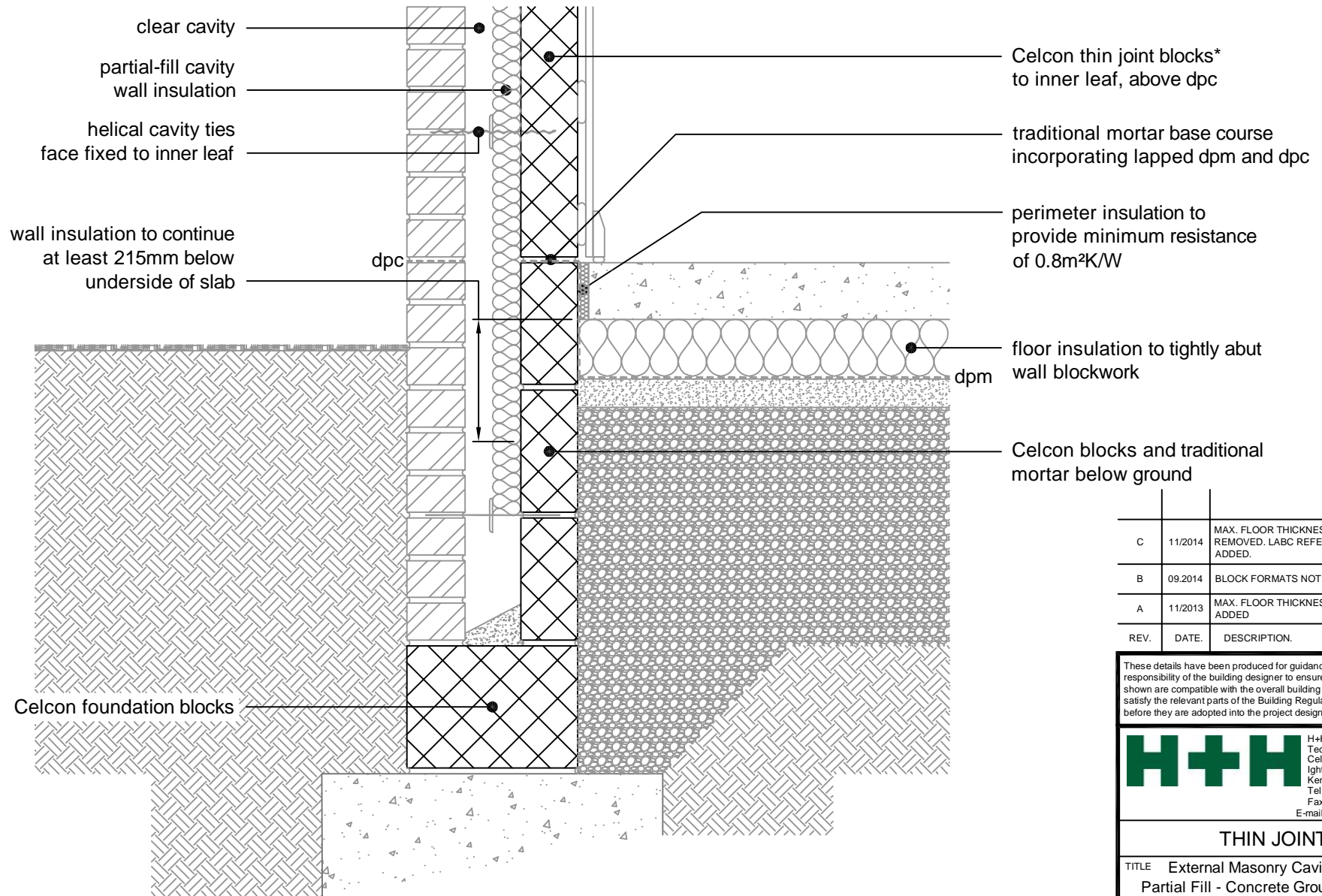
THIN JOINT

TITLE External Masonry Cavity Wall,
 Partial Fill - Suspended In-Situ Concrete
 Floor, Insulation Below Slab

DWG No. HH-TJ-PF-02

DRAWN BY SJB CHECKED BY AHR

DATE Nov 2012 SCALE 1:100 @ A4 REV.NO. C



* Thin joint block formats are:
 Plus = 630mm x 215mm
 Jumbo Blok = 630mm x 250mm
 Multiplate = 630mm x 350mm
 in 2mm Celfix mortar joints

For Ψ values applicable to this detail,
 see Constructive Details CD0003
 or
 LABC Registered Construction
 Details E5MCPF22 - 27.

REV.	DATE	DESCRIPTION	BY.
C	11/2014	MAX. FLOOR THICKNESS NOTE REMOVED. LABC REFERENCE ADDED.	SJB
B	09/2014	BLOCK FORMATS NOTE REVISED	SJB
A	11/2013	MAX. FLOOR THICKNESS NOTE ADDED	SJB

These details have been produced for guidance only. It is the responsibility of the building designer to ensure that the details shown are compatible with the overall building design and will satisfy the relevant parts of the Building Regulations applicable before they are adopted into the project design.

H+H H+H UK Limited
 Technical Services Dept.
 Celcon House
 Ightham, Sevenoaks
 Kent, TN15 9HZ.
 Tel +44 (0)1732 880580
 Fax +44 (0)1732 887013
 E-mail tsd@hhcelcon.co.uk

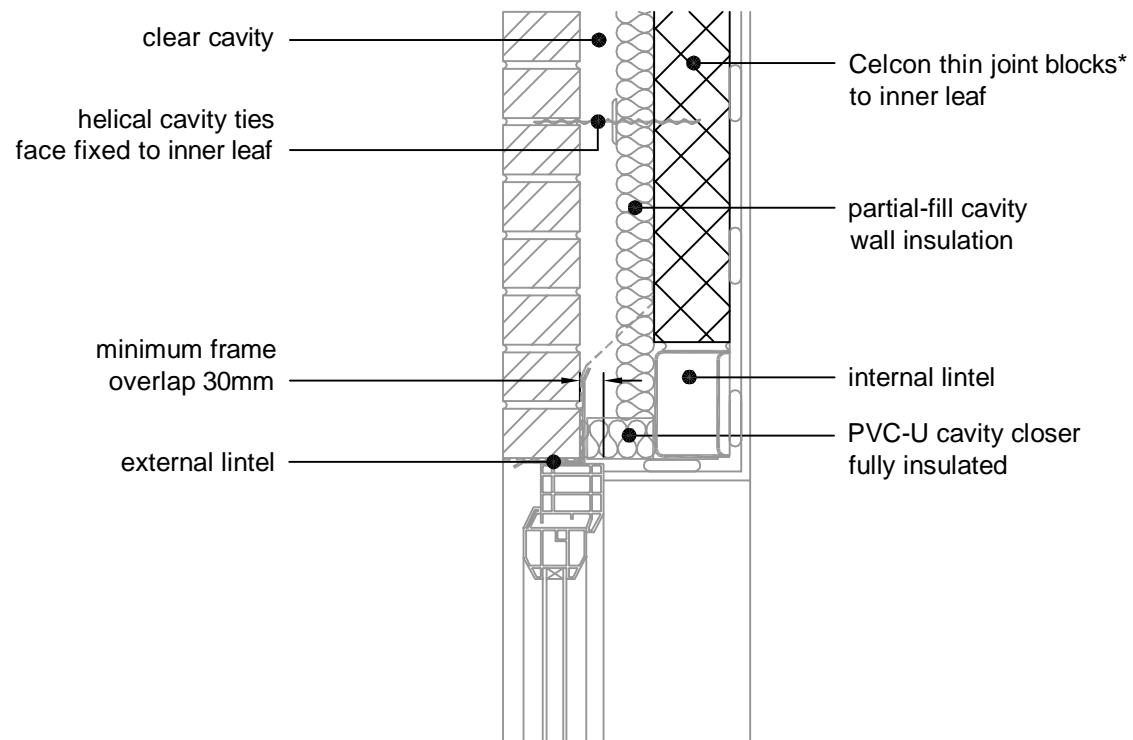
THIN JOINT

TITLE External Masonry Cavity Wall,
 Partial Fill - Concrete Ground Bearing
 Floor, Insulation Below Slab

DWG No. HH-TJ-PF-03

DRAWN BY SJB CHECKED BY AHR

DATE Nov 2012 SCALE 1:100 @ A4 REV.NO. C



* Thin joint block formats are:
 Plus = 630mm x 215mm
 Jumbo Blok = 630mm x 250mm
 Multiplate = 630mm x 350mm
 in 2mm Celfix mortar joints

For Ψ values applicable to this detail,
 see Constructive Details CD0004
 or
 LABC Registered Construction
 Details E2MCPF4 - 6.

B	11/2014	LABC NOTE ADDED	SJB
A	09.2014	BLOCK FORMATS NOTE REVISED	SJB
REV.	DATE	DESCRIPTION	BY.

These details have been produced for guidance only. It is the responsibility of the building designer to ensure that the details shown are compatible with the overall building design and will satisfy the relevant parts of the Building Regulations applicable before they are adopted into the project design.

H+H H+H UK Limited
 Technical Services Dept.
 Celcon House
 Ightham, Sevenoaks
 Kent, TN15 9HZ.
 Tel +44 (0)1732 880580
 Fax +44 (0)1732 887013
 E-mail tsd@hhcelcon.co.uk

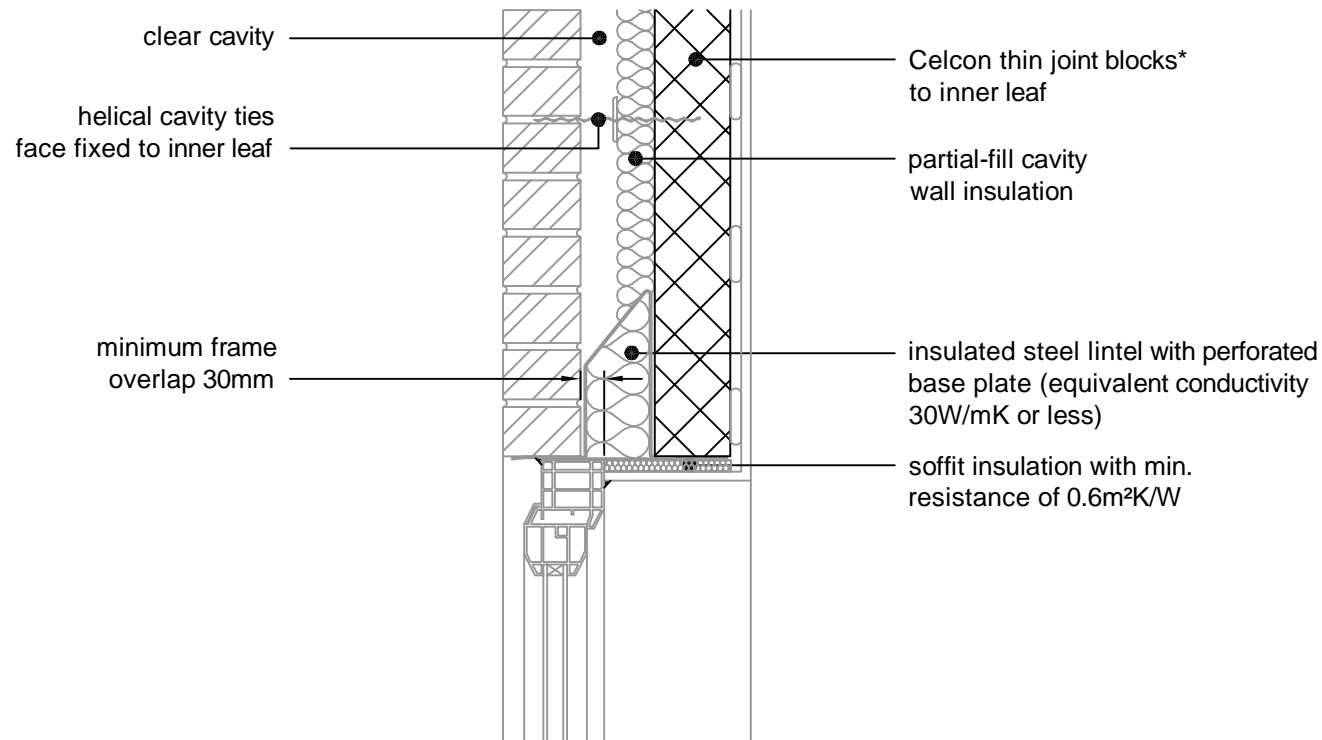
THIN JOINT

TITLE
 External Masonry Cavity Wall,
 Partial Fill - Independent Lintel

DWG No. **HH-TJ-PF-04**

DRAWN BY **SJB** CHECKED BY **AHR**

DATE **Nov 2012** SCALE **1:100 @ A4** REV.NO. **B**



* Thin joint block formats are:
 Plus = 630mm x 215mm
 Jumbo Blok = 630mm x 250mm
 Multiplate = 630mm x 350mm
 in 2mm Celfix mortar joints

For Ψ values applicable to this detail,
 see Constructive Details CD0005
 or
 LABC Registered Construction
 Details E1MCPF4 - 6.

REV.	DATE	DESCRIPTION	BY.
B	11/2014	MAX. LINTEL HEIGHT NOTE REMOVED. LINTEL BASEPLATE ADDED. LABC REFERENCE ADDED	SJB
A	09.2014	BLOCK FORMATS NOTE REVISED	SJB

These details have been produced for guidance only. It is the responsibility of the building designer to ensure that the details shown are compatible with the overall building design and will satisfy the relevant parts of the Building Regulations applicable before they are adopted into the project design.

H+H H+H UK Limited
 Technical Services Dept.
 Celcon House
 Ightham, Sevenoaks
 Kent, TN15 9HZ.
 Tel +44 (0)1732 880580
 Fax +44 (0)1732 887013
 E-mail tsd@hhcelcon.co.uk

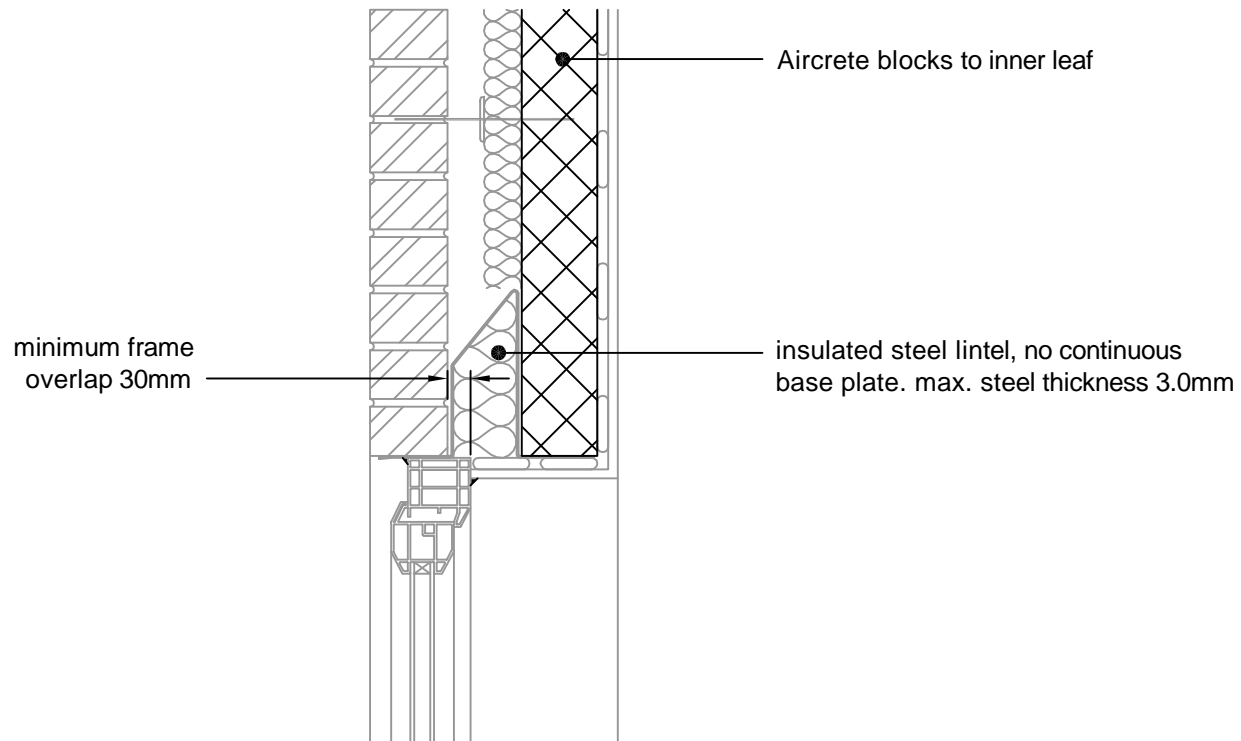
THIN JOINT

TITLE External Masonry Cavity Wall,
 Partial Fill - Steel Lintel, Perforated
 Base Plate, (Insulated Soffit)

DWG No. HH-TJ-PF-05

DRAWN BY SJB CHECKED BY AHR

DATE Nov 2012 SCALE 1:100 @ A4 REV.NO. B



* Thin joint block formats are:
 Plus = 630mm x 215mm
 Jumbo Blok = 630mm x 250mm
 Multiplate = 630mm x 350mm
 in 2mm Celfix mortar joints

For Ψ values applicable to this detail,
 see LABC Registered Construction
 Details E2MCPF7 - 9.

REV.	DATE.	DESCRIPTION.	BY.

These details have been produced for guidance only. It is the responsibility of the building designer to ensure that the details shown are compatible with the overall building design and will satisfy the relevant parts of the Building Regulations applicable before they are adopted into the project design.

H+H H+H UK Limited
 Technical Services Dept.
 Celcon House
 Ightham, Sevenoaks
 Kent, TN15 9HZ.
 Tel +44 (0)1732 880580
 Fax +44 (0)1732 887013
 E-mail tsd@hhcelcon.co.uk

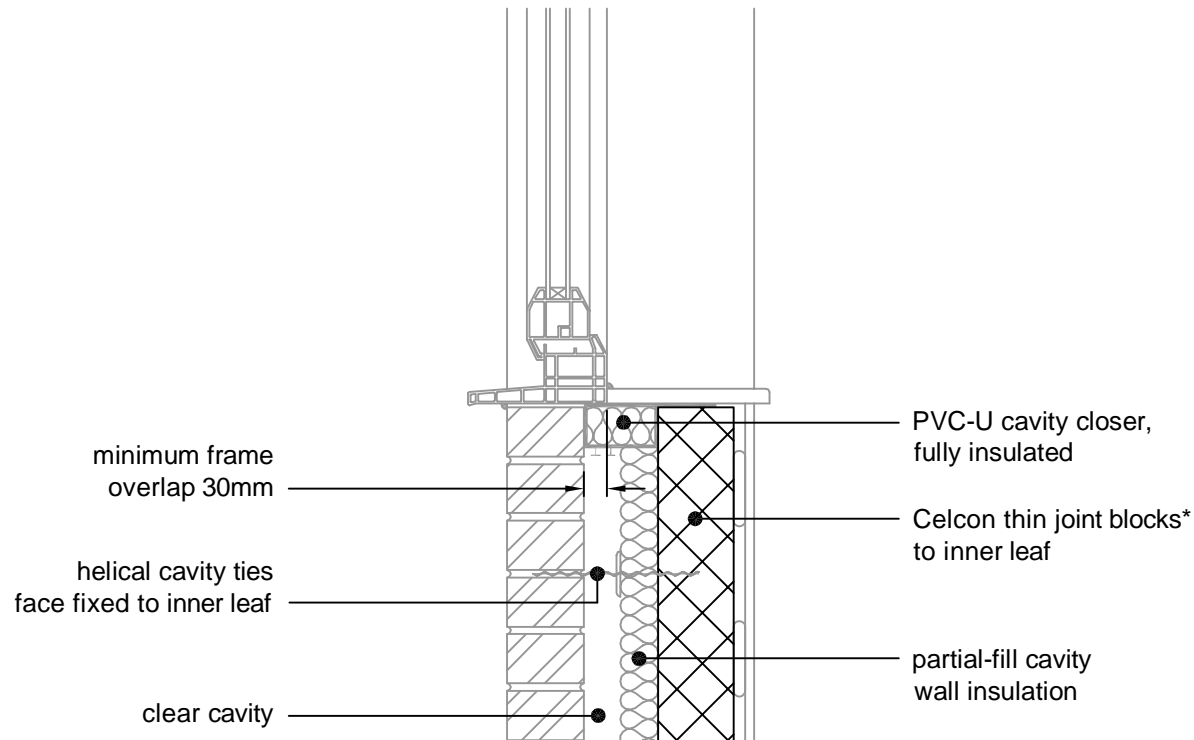
THIN JOINT

TITLE External Masonry Cavity Wall,
 Partial Fill - Steel Lintel, Open Back
 (no continuous base plate)

DWG No. HH-TJ-PF-22

DRAWN BY **SJB** CHECKED BY **AHR**

DATE Nov 2014 SCALE 1:100 @ A4 REV.NO. 0



* Thin joint block formats are:
 Plus = 630mm x 215mm
 Jumbo Blok = 630mm x 250mm
 Multiplate = 630mm x 350mm
 in 2mm Celfix mortar joints

For Ψ values applicable to this detail,
 see Constructive Details CD0006
 or
 LABC Registered Construction
 Details E3MCPF4 - 6.

REV.	DATE	DESCRIPTION	BY.
B	11/2014	LABC NOTE ADDED	SJB
A	09.2014	BLOCK FORMATS NOTE REVISED	SJB

These details have been produced for guidance only. It is the responsibility of the building designer to ensure that the details shown are compatible with the overall building design and will satisfy the relevant parts of the Building Regulations applicable before they are adopted into the project design.

H+H H+H UK Limited
 Technical Services Dept.
 Celcon House
 Ightham, Sevenoaks
 Kent, TN15 9HZ.
 Tel +44 (0)1732 880580
 Fax +44 (0)1732 887013
 E-mail tsd@hhcelcon.co.uk

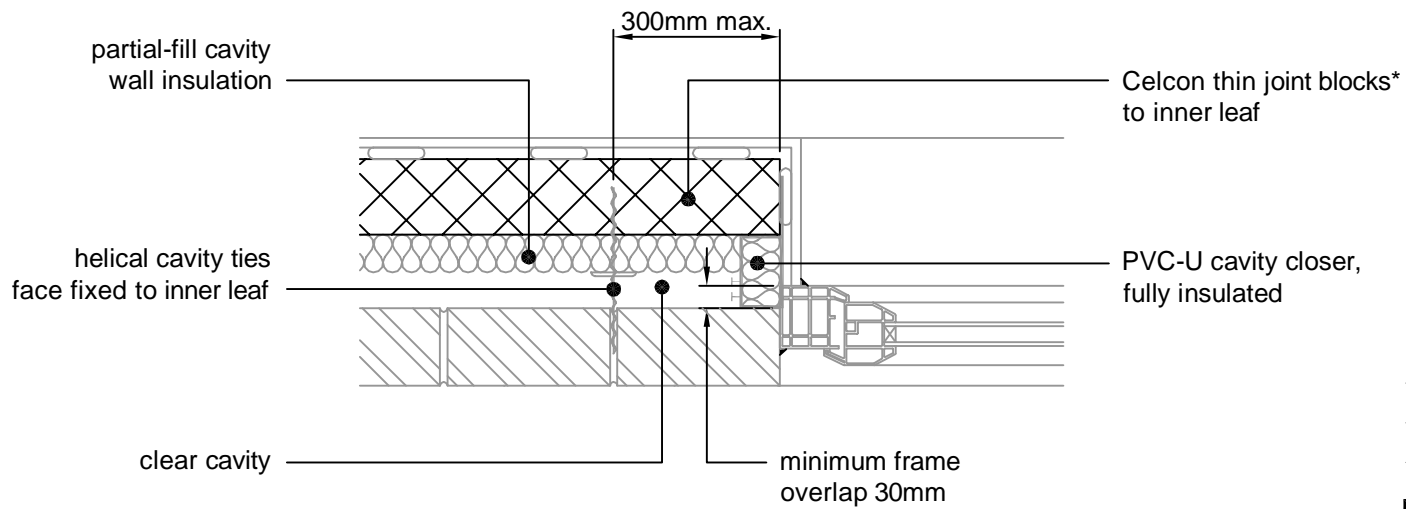
THIN JOINT

TITLE
 External Masonry Cavity Wall,
 Partial Fill - Sill

DWG No. **HH-TJ-PF-06**

DRAWN BY **SJB** CHECKED BY **AHR**

DATE **Nov 2012** SCALE **1:100 @ A4** REV.NO. **B**



* Thin joint block formats are:
 Plus = 630mm x 215mm
 Jumbo Blok = 630mm x 250mm
 Multiplate = 630mm x 350mm
 in 2mm Celfix mortar joints

For Ψ values applicable to this detail,
 see Constructive Details CD0007
 or
 LABC Registered Construction
 Details E4MCPF4 - 6.

B	11/2014	LABC NOTE ADDED	SJB
A	09.2014	BLOCK FORMATS NOTE REVISED	SJB
REV.	DATE	DESCRIPTION	BY.

These details have been produced for guidance only. It is the responsibility of the building designer to ensure that the details shown are compatible with the overall building design and will satisfy the relevant parts of the Building Regulations applicable before they are adopted into the project design.

H+H H+H UK Limited
 Technical Services Dept.
 Celcon House
 Ightham, Sevenoaks
 Kent, TN15 9HZ.
 Tel +44 (0)1732 880580
 Fax +44 (0)1732 887013
 E-mail tsd@hhcelcon.co.uk

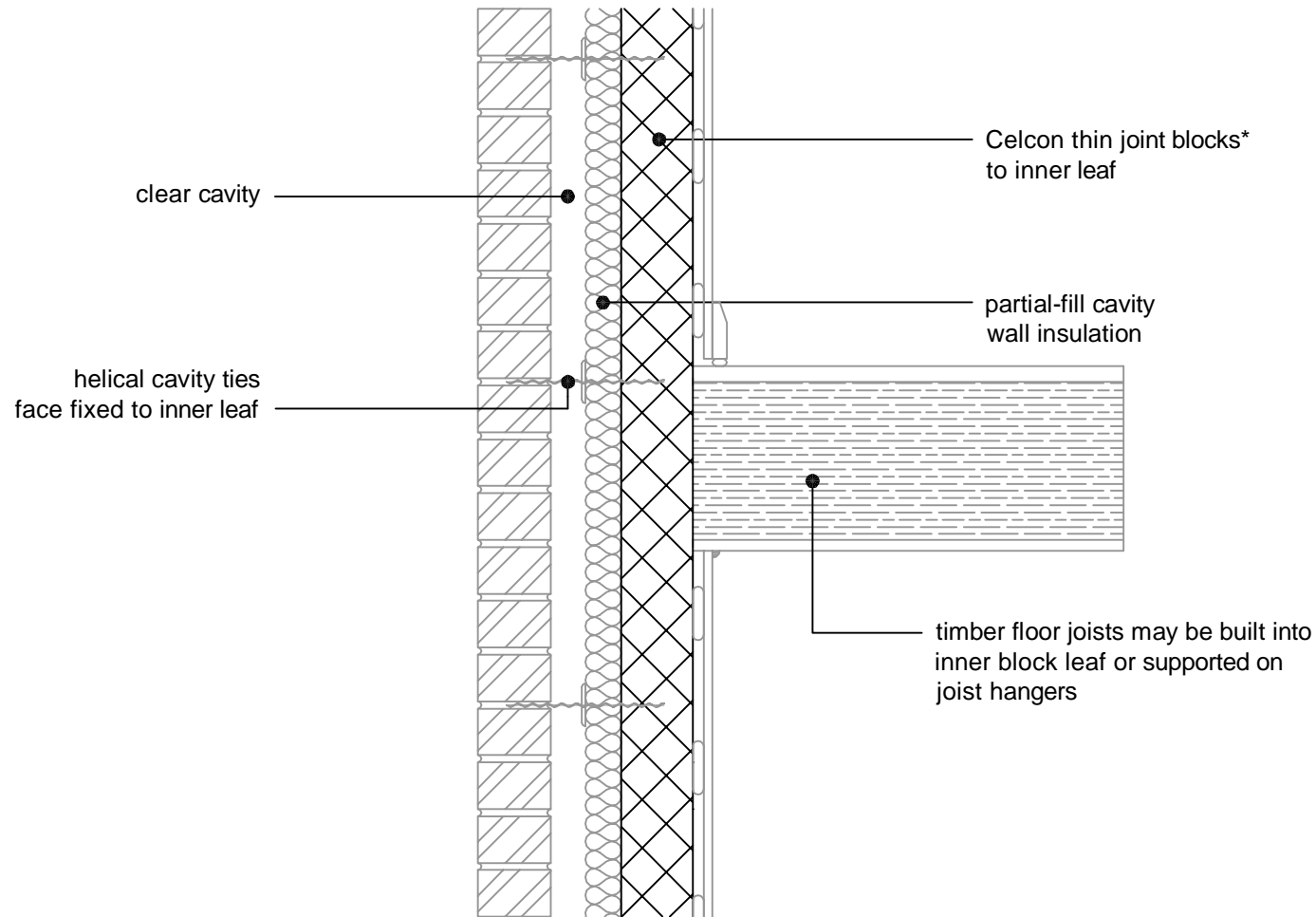
THIN JOINT

TITLE
 External Masonry Cavity Wall,
 Partial Fill - Jamb

DWG No. **HH-TJ-PF-07**

DRAWN BY **SJB** CHECKED BY **AHR**

DATE **Nov 2012** SCALE **1:100 @ A4** REV.NO. **B**



* Thin joint block formats are:
 Plus = 630mm x 215mm
 Jumbo Blok = 630mm x 250mm
 Multiplate = 630mm x 350mm
 in 2mm Celfix mortar joints

For Ψ values applicable to this detail,
 see Constructive Details CD0008
 or
 LABC Registered Construction
 Details E6MCPF4 - 6.

B	11/2014	LABC NOTE ADDED	SJB
A	09.2014	BLOCK FORMATS NOTE REVISED	SJB
REV.	DATE	DESCRIPTION	BY.

These details have been produced for guidance only. It is the responsibility of the building designer to ensure that the details shown are compatible with the overall building design and will satisfy the relevant parts of the Building Regulations applicable before they are adopted into the project design.

H+H H+H UK Limited
 Technical Services Dept.
 Celcon House
 Ightham, Sevenoaks
 Kent, TN15 9HZ.
 Tel +44 (0)1732 880580
 Fax +44 (0)1732 887013
 E-mail tsd@hhcelcon.co.uk

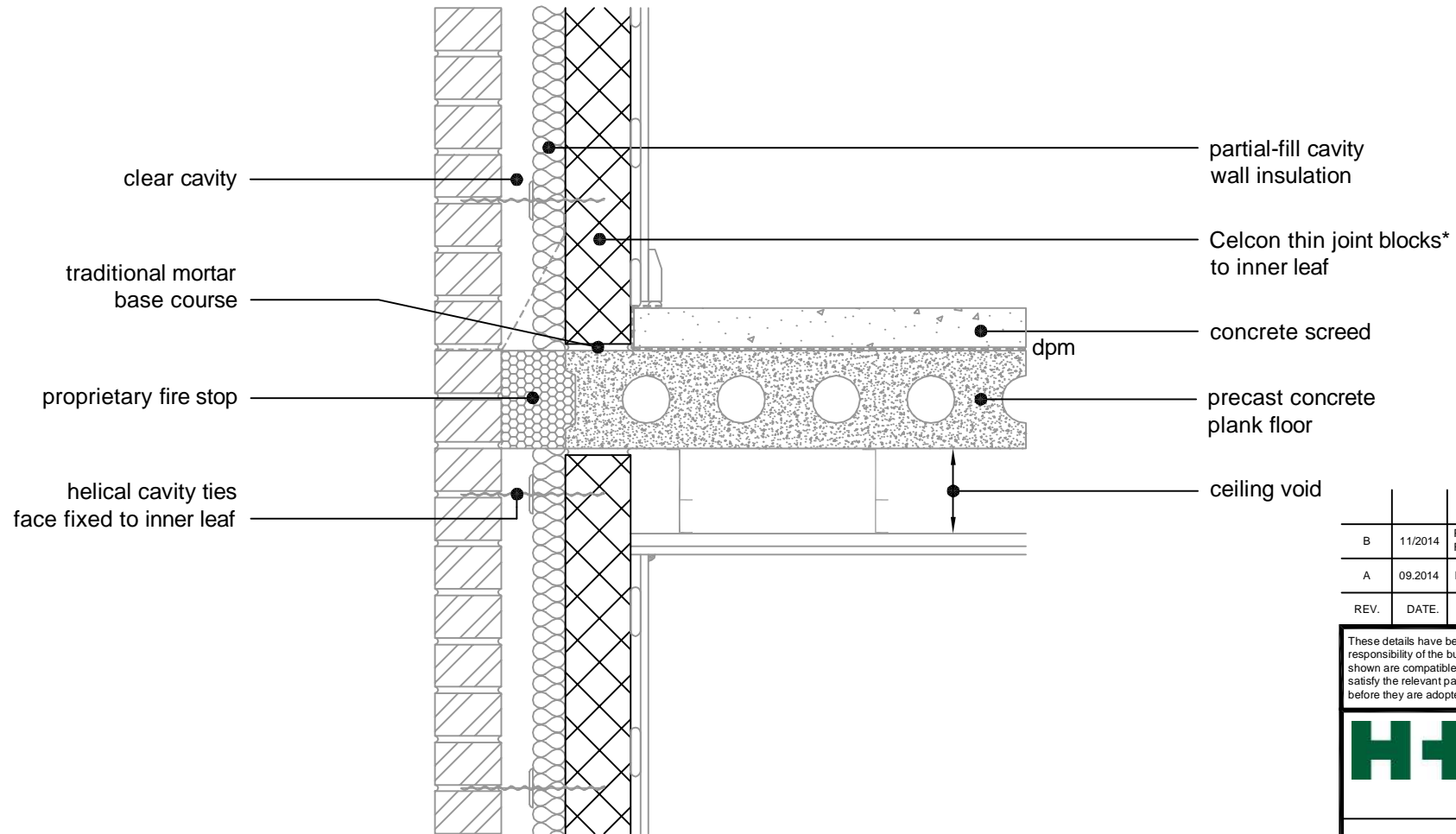
THIN JOINT

TITLE External Masonry Cavity Wall,
 Partial Fill - Intermediate Timber Floor
 Within A Dwelling

DWG No. HH-TJ-PF-08

DRAWN BY SJB CHECKED BY AHR

DATE Nov 2012 SCALE 1:100 @ A4 REV.NO. B



* Thin joint block formats are:
 Plus = 630mm x 215mm
 Jumbo Blok = 630mm x 250mm
 Multiplate = 630mm x 350mm
 in 2mm Celfix mortar joints

For Ψ values applicable to this detail,
 see Constructive Details CD0009
 or
 LABC Registered Construction
 Details E7MCPF4 - 6.

REV.	DATE	DESCRIPTION	BY.
B	11/2014	PROPRIETARY FIRE STOP NOTE REVISED. LABC NOTE ADDED.	SJB
A	09.2014	BLOCK FORMATS NOTE REVISED	SJB

These details have been produced for guidance only. It is the responsibility of the building designer to ensure that the details shown are compatible with the overall building design and will satisfy the relevant parts of the Building Regulations applicable before they are adopted into the project design.

H+H H+H UK Limited
 Technical Services Dept.
 Celcon House
 Ightham, Sevenoaks
 Kent, TN15 9HZ.
 Tel +44 (0)1732 880580
 Fax +44 (0)1732 887013
 E-mail tsd@hhcelcon.co.uk

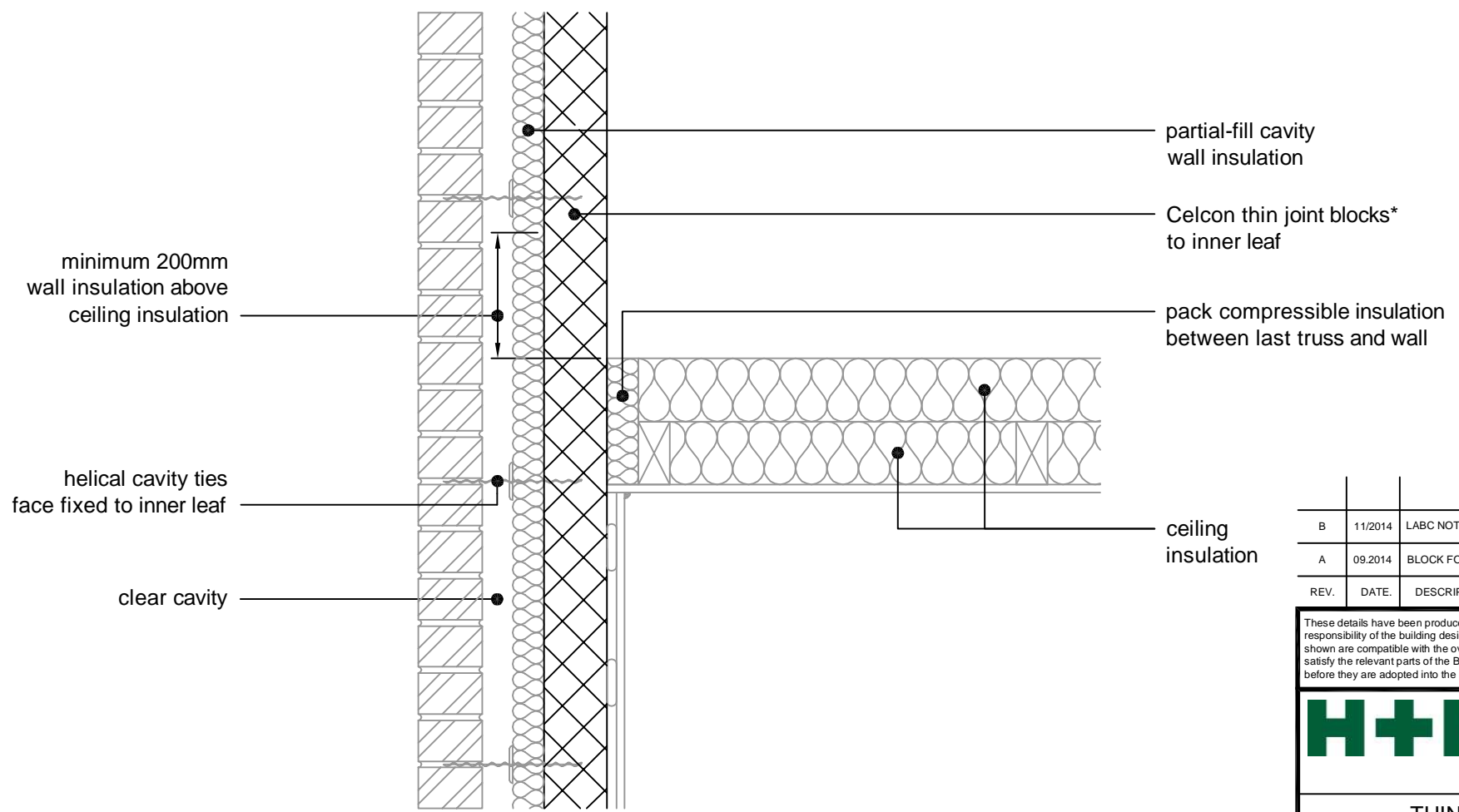
THIN JOINT

TITLE External Masonry Cavity Wall,
 Partial Fill - Precast Concrete Separating
 Floor Between Dwellings

DWG No. HH-TJ-PF-09

DRAWN BY SJB CHECKED BY AHR

DATE Nov 2012 SCALE 1:100 @ A4 REV.NO. B



* Thin joint block formats are:
 Plus = 630mm x 215mm
 Jumbo Blok = 630mm x 250mm
 Multiplate = 630mm x 350mm
 in 2mm Celfix mortar joints

For Ψ values applicable to this detail,
 see Constructive Details CD0010
 or
 LABC Registered Construction
 Details E12MCPF4 - 6.

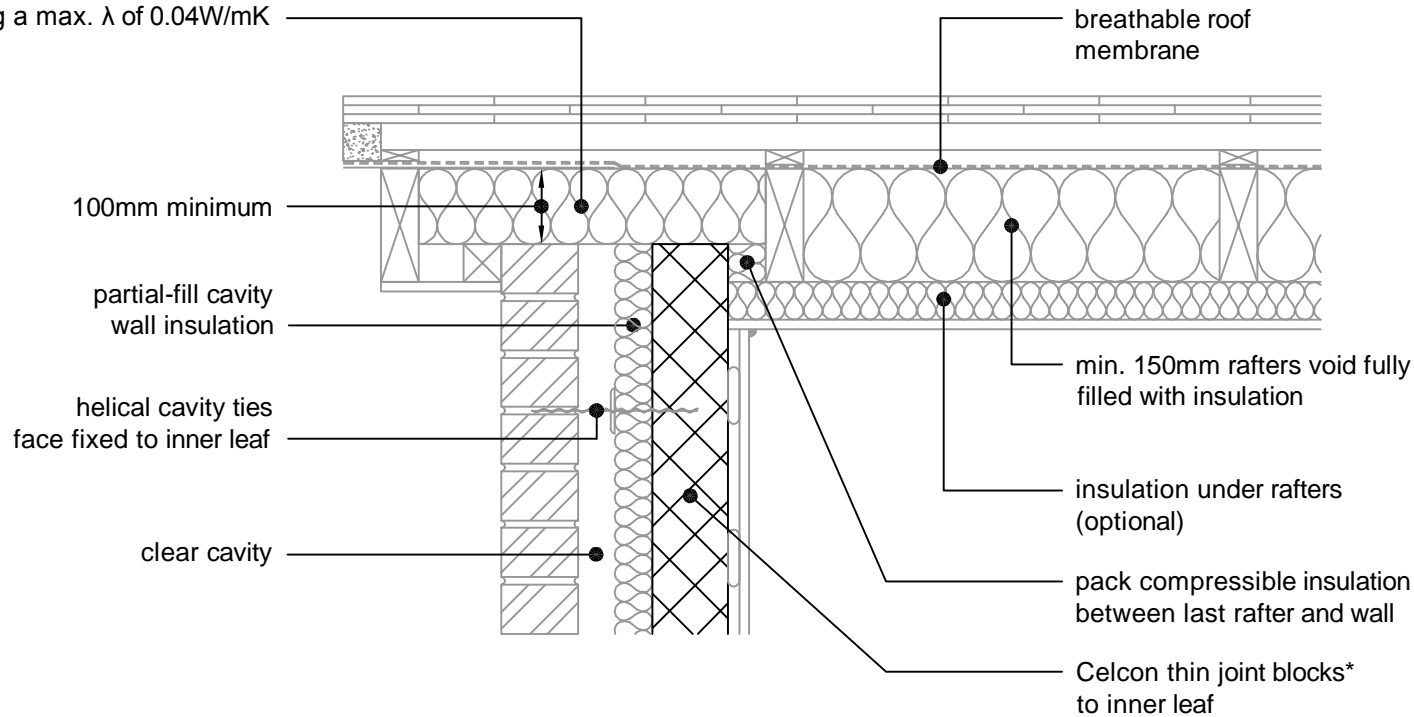
B	11/2014	LABC NOTE ADDED	SJB
A	09.2014	BLOCK FORMATS NOTE REVISED	SJB
REV.	DATE.	DESCRIPTION.	BY.

These details have been produced for guidance only. It is the responsibility of the building designer to ensure that the details shown are compatible with the overall building design and will satisfy the relevant parts of the Building Regulations applicable before they are adopted into the project design.

H+H H+H UK Limited
 Technical Services Dept.
 Celcon House
 Ightham, Sevenoaks
 Kent, TN15 9HZ.
 Tel +44 (0)1732 880580
 Fax +44 (0)1732 887013
 E-mail tsd@hhcelcon.co.uk

THIN JOINT		
TITLE External Masonry Cavity Wall, Partial Fill - Pitched Roof, Gable - Insulation At Ceiling Level, Ventilated Loft		
DWG No. HH-TJ-PF-10		
DRAWN BY	SJB	CHECKED BY AHR
DATE	Nov 2012	SCALE 1:100 @ A4
		REV.NO. B

fill this void with insulation
having a max. λ of 0.04W/mK



* Thin joint block formats are:
 Plus = 630mm x 215mm
 Jumbo Blok = 630mm x 250mm
 Multiplate = 630mm x 350mm
 in 2mm Celfix mortar joints

For Ψ values applicable to this detail,
 see Constructive Details CD0011
 or
 LABC Registered Construction
 Details E13MCPF4 - 6.

REV.	DATE	DESCRIPTION	BY.
C	11/2014	LABC NOTE ADDED	SJB
B	09.2014	BLOCK FORMATS NOTE REVISED	SJB
A	11/2013	RAFTERS INSULATION THICKNESS NOTE ADDED	SJB

These details have been produced for guidance only. It is the responsibility of the building designer to ensure that the details shown are compatible with the overall building design and will satisfy the relevant parts of the Building Regulations applicable before they are adopted into the project design.

H+H H+H UK Limited
 Technical Services Dept.
 Celcon House
 Ightham, Sevenoaks
 Kent, TN15 9HZ.
 Tel +44 (0)1732 880580
 Fax +44 (0)1732 887013
 E-mail tsd@hhcelcon.co.uk

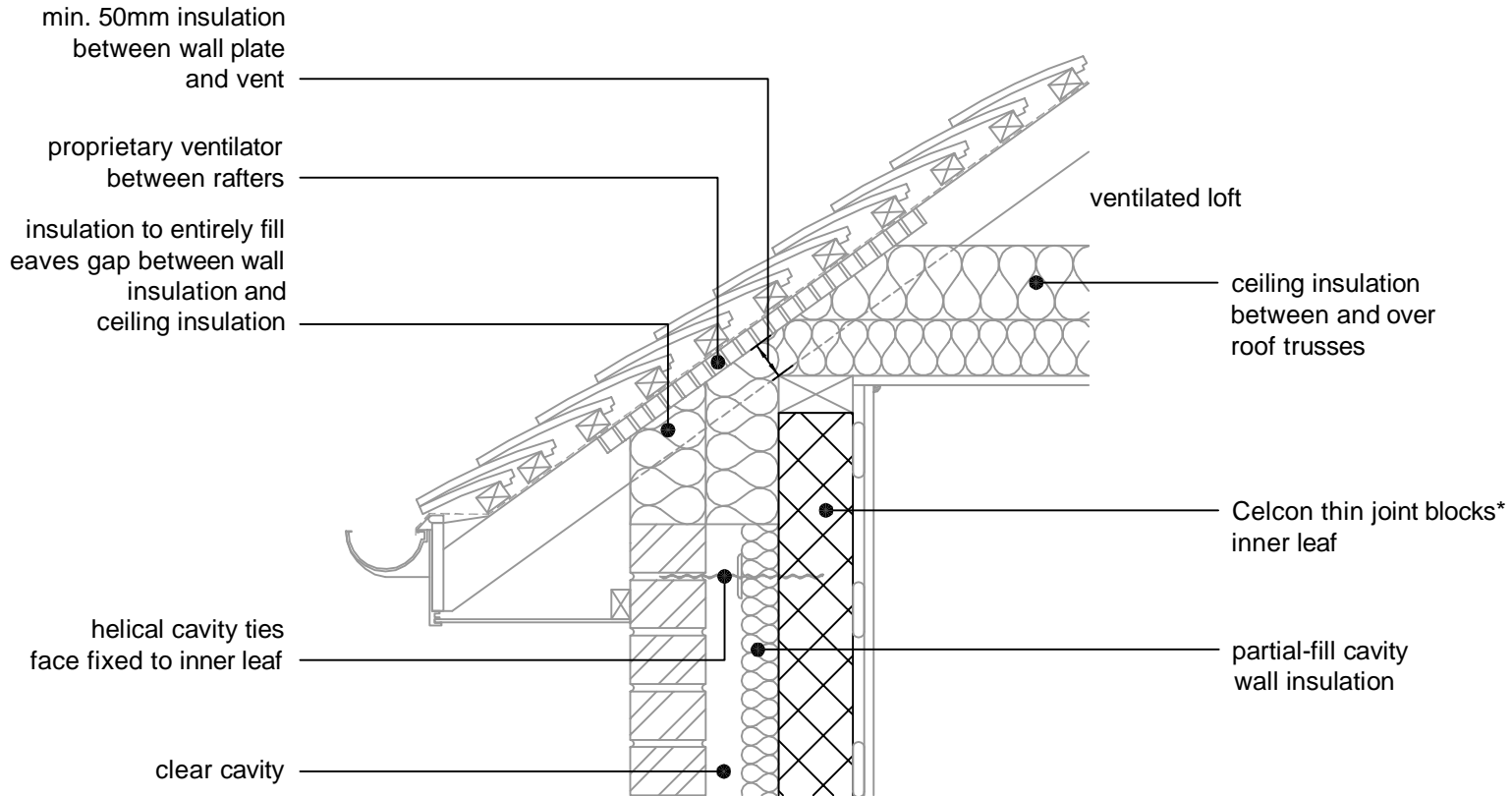
THIN JOINT

TITLE External Masonry Cavity Wall,
 Partial Fill - Pitched Roof, Gable - Insulation
 At Rafter Level, Unventilated Rafter Void

DWG No. HH-TJ-PF-11

DRAWN BY SJB CHECKED BY AHR

DATE Nov 2012 SCALE 1:100 @ A4 REV.NO. C



* Thin joint block formats are:
 Plus = 630mm x 215mm
 Jumbo Blok = 630mm x 250mm
 Multiplate = 630mm x 350mm
 in 2mm Celfix mortar joints

For Ψ values applicable to this detail,
 see Constructive Details CD0012
 or
 LABC Registered Construction
 Details E10MCPF4 - 6.

REV.	DATE	DESCRIPTION	BY.
C	11/2014	LABC NOTE ADDED	SJB
B	09.2014	BLOCK FORMATS NOTE REVISED	SJB
A	11/2013	WALL PLATE INSULATION COVER NOTE MOVED	SJB

These details have been produced for guidance only. It is the responsibility of the building designer to ensure that the details shown are compatible with the overall building design and will satisfy the relevant parts of the Building Regulations applicable before they are adopted into the project design.

H+H H+H UK Limited
 Technical Services Dept.
 Celcon House
 Ightham, Sevenoaks
 Kent, TN15 9HZ.
 Tel +44 (0)1732 880580
 Fax +44 (0)1732 887013
 E-mail tsd@hhcelcon.co.uk

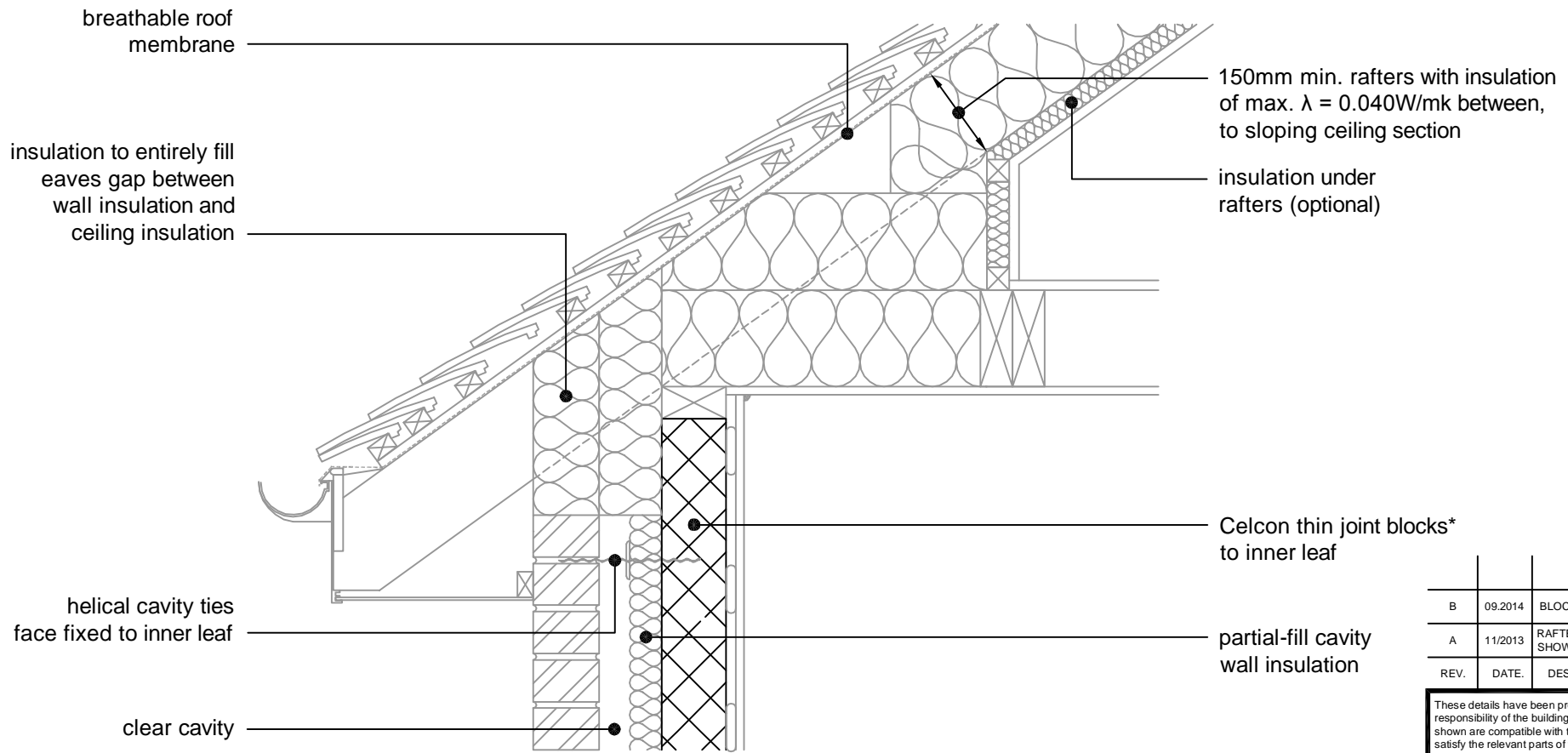
THIN JOINT

TITLE External Masonry Cavity Wall,
 Partial Fill - Pitched Roof, Eaves - Insulation
 At Ceiling Level, Ventilated Loft

DWG No. **HH-TJ-PF-12**

DRAWN BY **SJB** CHECKED BY **AHR**

DATE **Nov 2012** SCALE **1:100 @ A4** REV.NO. **C**



* Thin joint block formats are:
 Plus = 630mm x 215mm
 Jumbo Blok = 630mm x 250mm
 Multiplate = 630mm x 350mm
 in 2mm Celfix mortar joints

For Ψ values applicable to this detail,
 see Constructive Details CD0013

REV.	DATE	DESCRIPTION	BY.
B	09.2014	BLOCK FORMATS NOTE REVISED	SJB
A	11/2013	RAFTERS INSULATION NOW SHOWN AS 150mm.	SJB

These details have been produced for guidance only. It is the responsibility of the building designer to ensure that the details shown are compatible with the overall building design and will satisfy the relevant parts of the Building Regulations applicable before they are adopted into the project design.

H+H H+H UK Limited
 Technical Services Dept.
 Celcon House
 Ightham, Sevenoaks
 Kent, TN15 9HZ.
 Tel +44 (0)1732 880580
 Fax +44 (0)1732 887013
 E-mail tsd@hhcelcon.co.uk

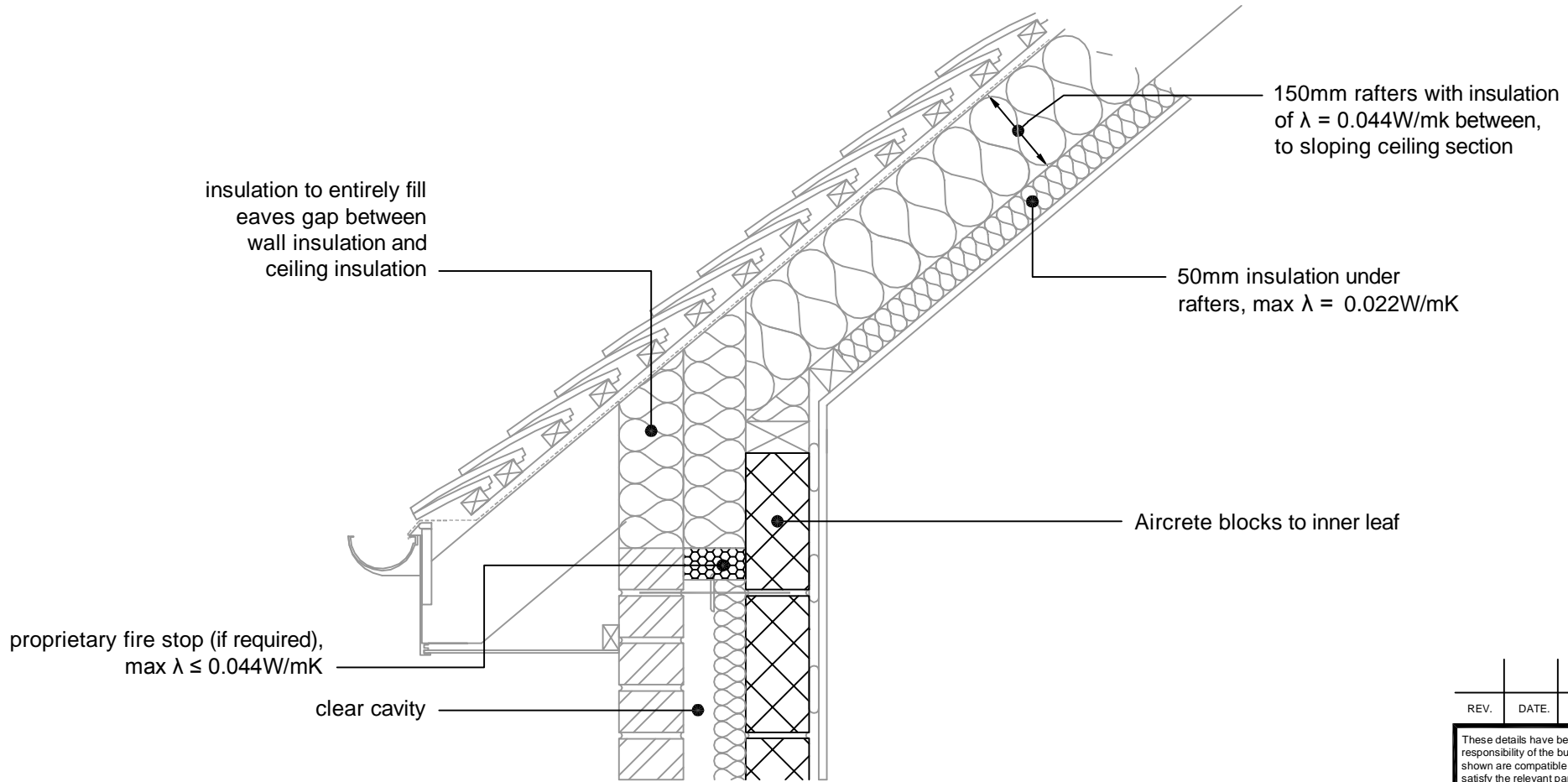
THIN JOINT

TITLE External Masonry Cavity Wall,
 Partial Fill - Pitched Roof, Eaves - Insulation
 At Rafter Level, Unventilated Rafter Void

DWG No. **HH-TJ-PF-13**

DRAWN BY **SJB** CHECKED BY **AHR**

DATE **Nov 2012** SCALE **1:100 @ A4** REV.NO. **B**



* Thin joint block formats are:
 Plus = 630mm x 215mm
 Jumbo Blok = 630mm x 250mm
 Multiplate = 630mm x 350mm
 in 2mm Celfix mortar joints

For Ψ values applicable to this detail, see LABC Registered Construction Details E11MCPF4 - 6.

REV.	DATE	DESCRIPTION	BY.

These details have been produced for guidance only. It is the responsibility of the building designer to ensure that the details shown are compatible with the overall building design and will satisfy the relevant parts of the Building Regulations applicable before they are adopted into the project design.

H+H H+H UK Limited
 Technical Services Dept.
 Celcon House
 Ightham, Sevenoaks
 Kent, TN15 9HZ
 Tel +44 (0)1732 880580
 Fax +44 (0)1732 887013
 E-mail tsd@hhcelcon.co.uk

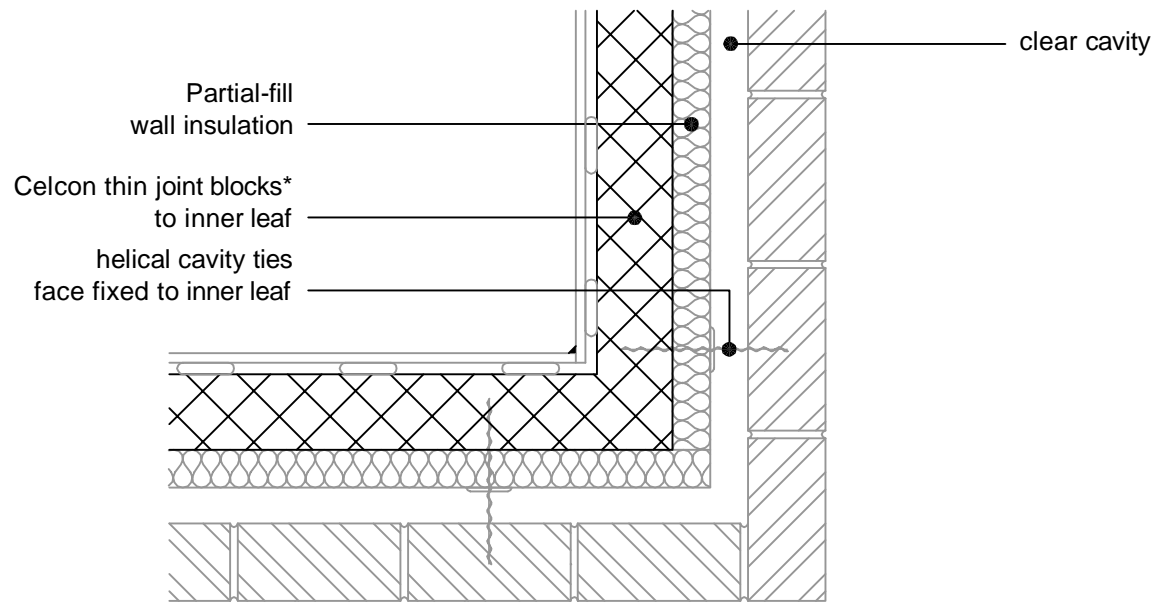
THIN JOINT

TITLE External Masonry Cavity Wall,
 Partial Fill - Pitched Roof, Eaves, Insulated
 At Rafter Level, Unventilated Rafter Void

DWG No. HH-TJ-PF-23

DRAWN BY SJB CHECKED BY AHR

DATE Nov 2014 SCALE 1:100 @ A4 REV.NO. 0



* Thin joint block formats are:
 Plus = 630mm x 215mm
 Jumbo Blok = 630mm x 250mm
 Multiplate = 630mm x 350mm
 in 2mm Celfix mortar joints

For Ψ values applicable to this detail,
 see Constructive Details CD0014
 or
 LABC Registered Construction
 Details E16MCPF4 - 6.

REV.	DATE	DESCRIPTION	BY.
B	11.2014	LABC NOTE ADDED	SJB
A	09.2014	BLOCK FORMATS NOTE REVISED	SJB

These details have been produced for guidance only. It is the responsibility of the building designer to ensure that the details shown are compatible with the overall building design and will satisfy the relevant parts of the Building Regulations applicable before they are adopted into the project design.

H+H H+H UK Limited
 Technical Services Dept.
 Celcon House
 Ightham, Sevenoaks
 Kent, TN15 9HZ.
 Tel +44 (0)1732 880580
 Fax +44 (0)1732 887013
 E-mail tsd@hhcelcon.co.uk

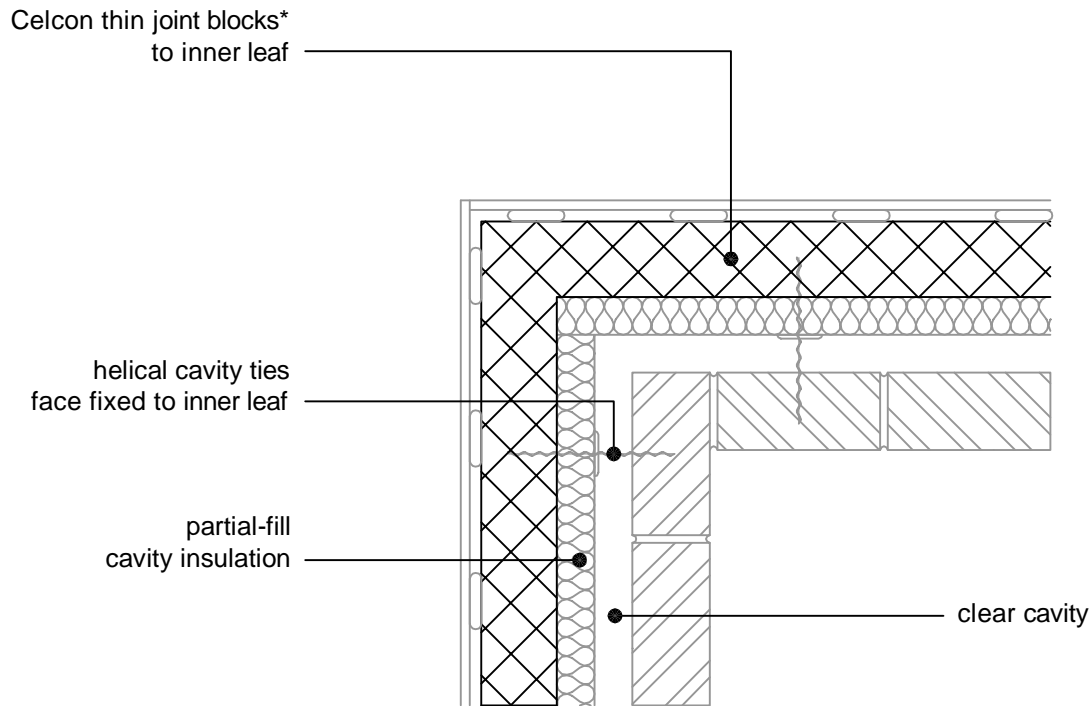
THIN JOINT

TITLE
 External Masonry Cavity Wall,
 Partial Fill - Normal Corner

DWG No. HH-TJ-PF-14

DRAWN BY SJB CHECKED BY AHR

DATE Nov 2012 SCALE 1:100 @ A4 REV.NO. B



* Thin joint block formats are:
 Plus = 630mm x 215mm
 Jumbo Blok = 630mm x 250mm
 Multiplate = 630mm x 350mm
 in 2mm Celfix mortar joints

For Ψ values applicable to this detail,
 see Constructive Details CD0015
 or
 LABC Registered Construction
 Details E17MCPF4 - 6.

REV.	DATE	DESCRIPTION	BY.
B	11.2014	LABC NOTE ADDED	SJB
A	09.2014	BLOCK FORMATS NOTE REVISED	SJB

These details have been produced for guidance only. It is the responsibility of the building designer to ensure that the details shown are compatible with the overall building design and will satisfy the relevant parts of the Building Regulations applicable before they are adopted into the project design.

H+H H+H UK Limited
 Technical Services Dept.
 Celcon House
 Ightham, Sevenoaks
 Kent, TN15 9HZ.
 Tel +44 (0)1732 880580
 Fax +44 (0)1732 887013
 E-mail tsd@hhcelcon.co.uk

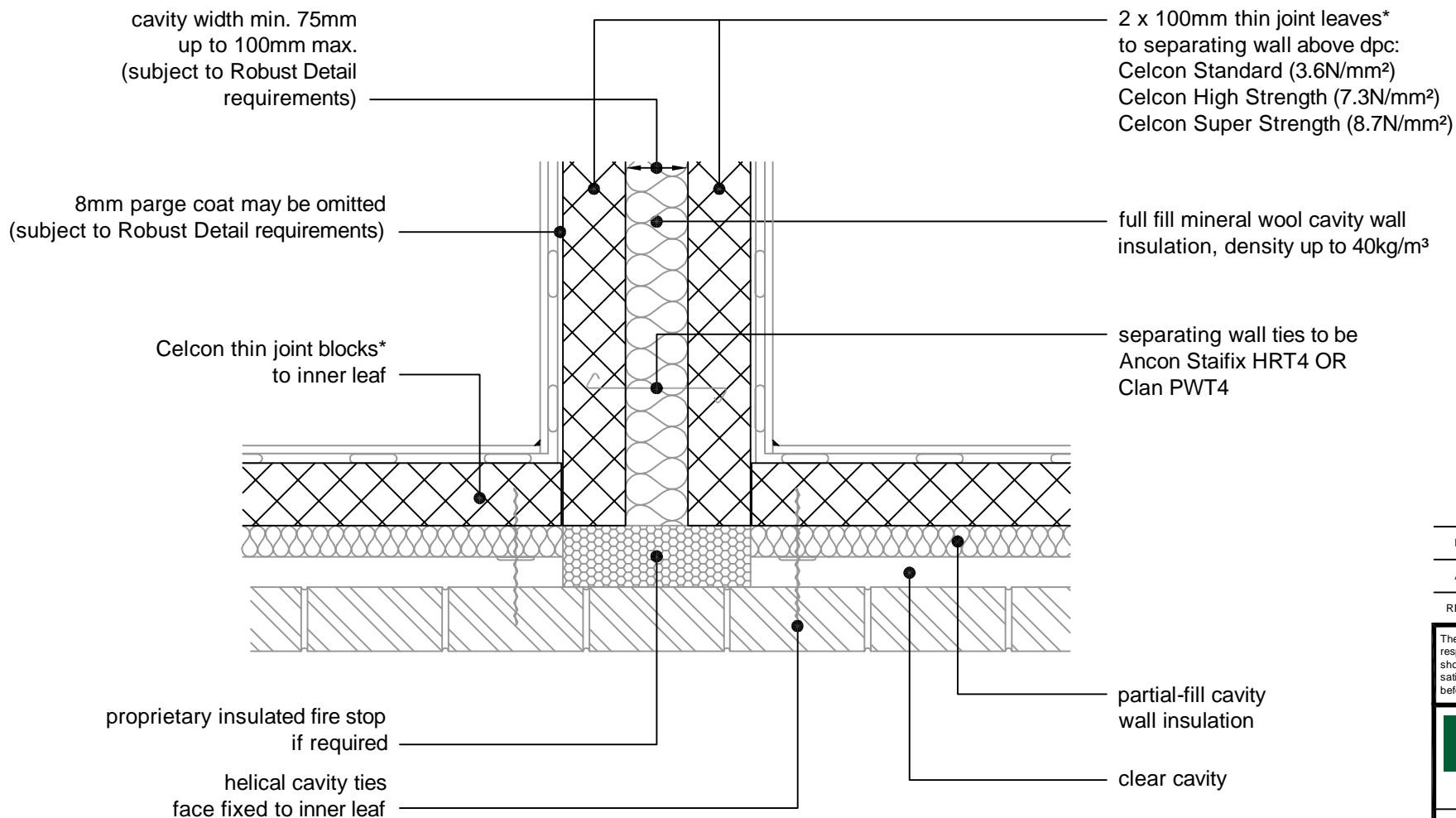
THIN JOINT

TITLE
 External Masonry Cavity Wall,
 Partial Fill - Inverted Corner

DWG No. HH-TJ-PF-15

DRAWN BY SJB CHECKED BY AHR

DATE Nov 2012 SCALE 1:100 @ A4 REV.NO. B



* Thin joint block formats are:
 Plus = 630mm x 215mm
 Jumbo Blok = 630mm x 250mm
 Multiplate = 630mm x 350mm
 in 2mm Celfix mortar joints

For Ψ values applicable to this detail,
 see Constructive Details CD0016
 or
 LABC Registered Construction
 Details E18MCPF7 - 10.

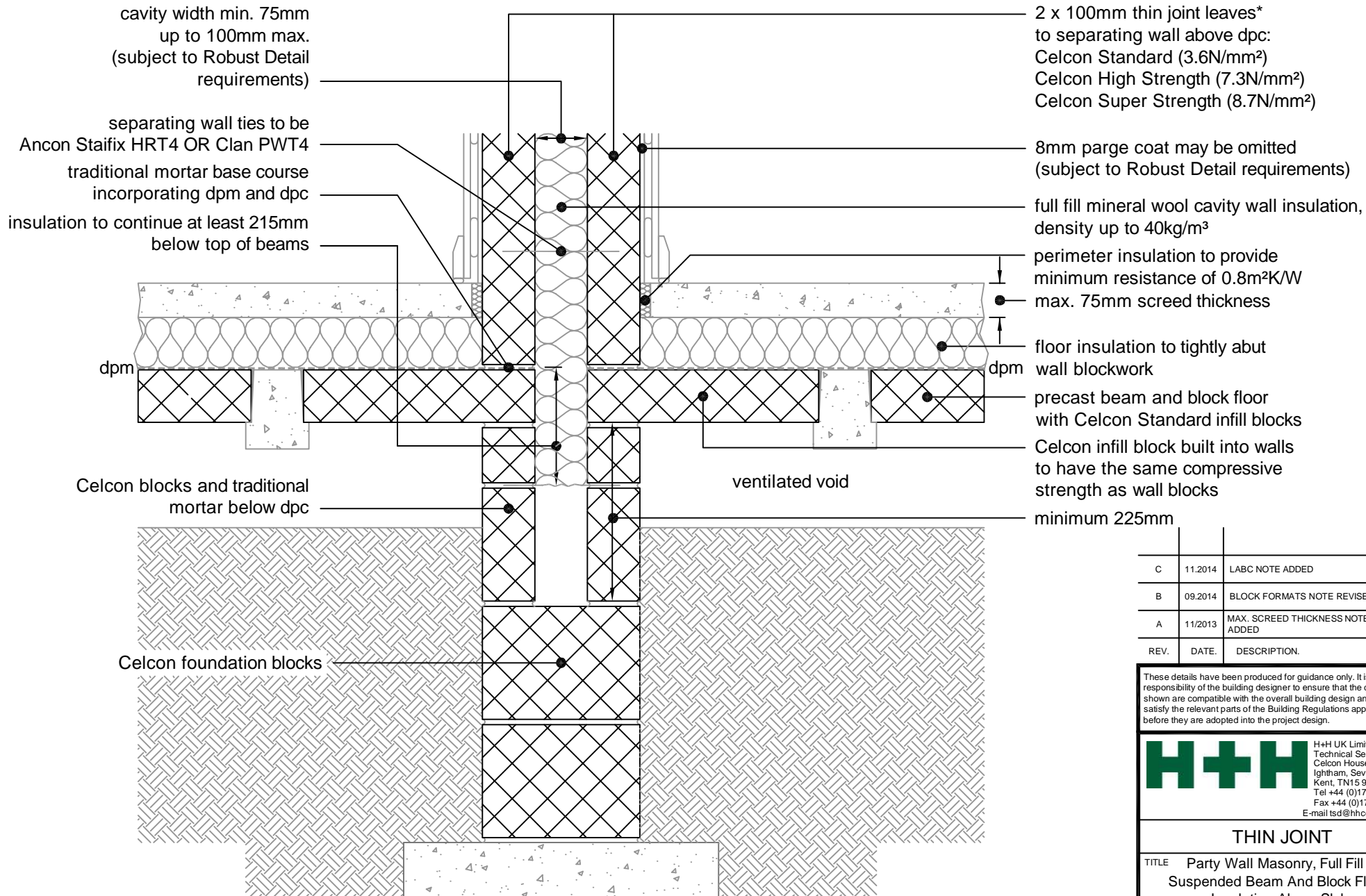
B	11/2014	PROPRIETARY FIRE STOP NOTE REVISED. LABC NOTE ADDED.	SJB
A	09.2014	BLOCK FORMATS NOTE REVISED	SJB
REV.	DATE.	DESCRIPTION.	BY.

These details have been produced for guidance only. It is the responsibility of the building designer to ensure that the details shown are compatible with the overall building design and will satisfy the relevant parts of the Building Regulations applicable before they are adopted into the project design.



THIN JOINT

TITLE External Masonry Cavity Wall, Partial Fill - Party Wall Between Dwellings		
DWG No. HH-TJ-PF-16		
DRAWN BY SJB	CHECKED BY AHR	
DATE Nov 2012	SCALE 1:100 @ A4	REV.NO. B



2 x 100mm thin joint leaves*
to separating wall above dpc:
Celcon Standard (3.6N/mm²)
Celcon High Strength (7.3N/mm²)
Celcon Super Strength (8.7N/mm²)

8mm parge coat may be omitted
(subject to Robust Detail requirements)

full fill mineral wool cavity wall insulation,
density up to 40kg/m³

perimeter insulation to provide
minimum resistance of 0.8m²K/W
max. 75mm screed thickness

floor insulation to tightly abut
wall blockwork

precast beam and block floor
with Celcon Standard infill blocks

Celcon infill block built into walls
to have the same compressive
strength as wall blocks

minimum 225mm

REV.	DATE.	DESCRIPTION.	BY.
C	11.2014	LABC NOTE ADDED	SJB
B	09.2014	BLOCK FORMATS NOTE REVISED	SJB
A	11/2013	MAX. SCREED THICKNESS NOTE ADDED	SJB

These details have been produced for guidance only. It is the responsibility of the building designer to ensure that the details shown are compatible with the overall building design and will satisfy the relevant parts of the Building Regulations applicable before they are adopted into the project design.

H+H H+H UK Limited
Technical Services Dept.
Celcon House
Ightham, Sevenoaks
Kent, TN15 9HZ
Tel +44 (0)1732 880580
Fax +44 (0)1732 887013
E-mail tsd@hhcelcon.co.uk

THIN JOINT

TITLE Party Wall Masonry, Full Fill -
Suspended Beam And Block Floor,
Insulation Above Slab

DWG No. **HH-TJ-PW-17**

DRAWN BY **SJB** CHECKED BY **AHR**

DATE **Nov 2012** SCALE **1:100 @ A4** REV.NO. **C**

* Thin joint block formats are:
Plus = 630mm x 215mm
Jumbo Blok = 630mm x 250mm
Multiplate = 630mm x 350mm
in 2mm Celfix mortar joints

For Ψ values applicable to this detail,
see Constructive Details CD0017
or
LABC Registered Construction
Details P1PCFF1 - 2.

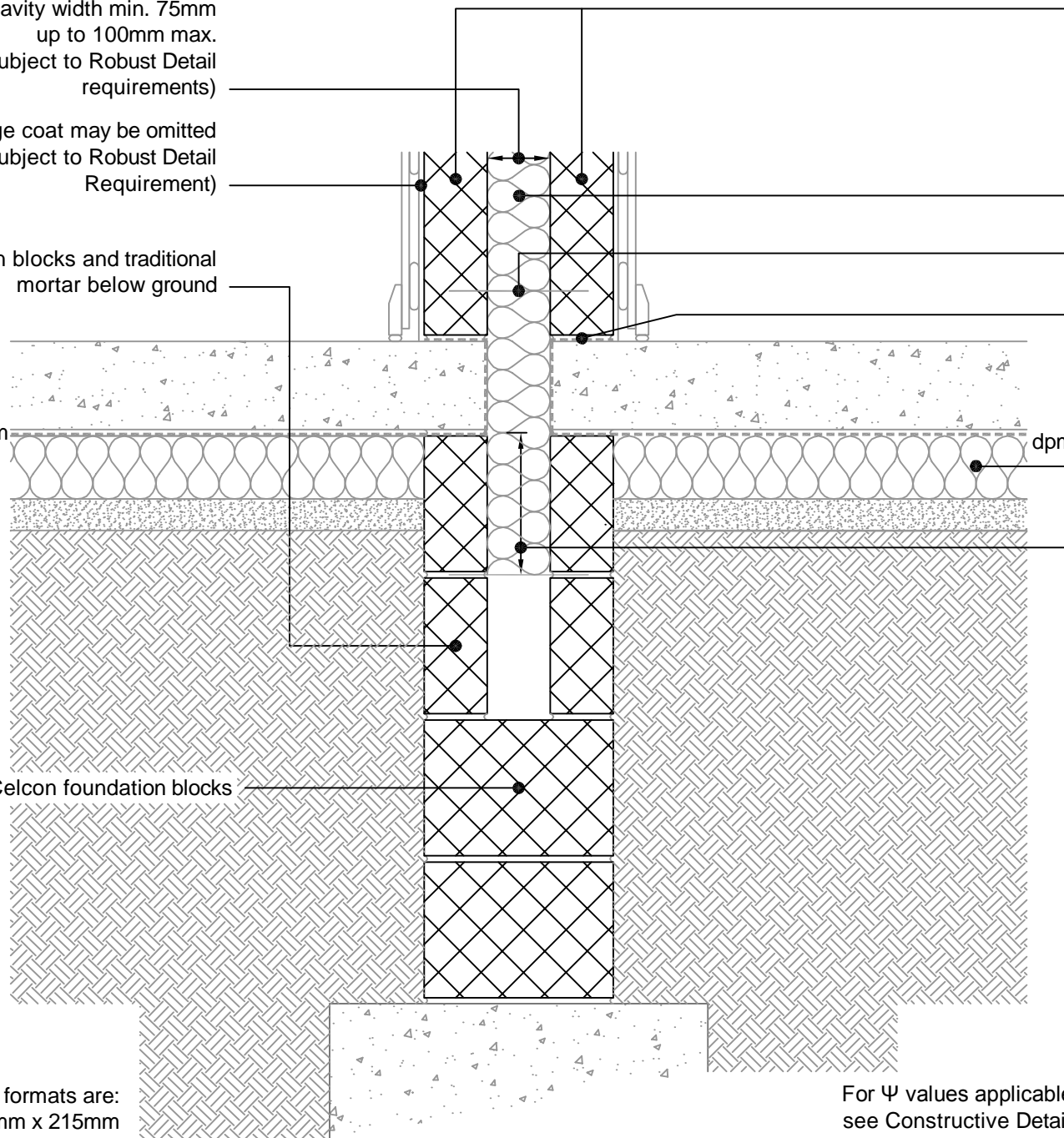
cavity width min. 75mm
up to 100mm max.
(subject to Robust Detail
requirements)

8mm parge coat may be omitted
(subject to Robust Detail
Requirement)

Celcon blocks and traditional
mortar below ground

dpm

Celcon foundation blocks



2 x 100mm thin joint leaves*
to separating wall above dpc:
Celcon Standard (3.6N/mm²)
Celcon High Strength (7.3N/mm²)
Celcon Super Strength (8.7N/mm²)

full fill mineral wool cavity wall
insulation, density up to 40kg/m³

separating wall ties to be Ancon
Staifix HRT4 or Clan PWT4

traditional mortar base course
incorporating lapped dpm and dpc

floor insulation to tightly abut
wall blockwork

insulation to continue
at least 215mm below
underside of slab

REV.	DATE	DESCRIPTION	BY.
C	11/2014	MAX. FLOOR THICKNESS NOTE REMOVED, LABC REFERENCE ADDED.	SJB
B	09/2014	BLOCK FORMATS NOTE REVISED	SJB
A	11/2013	MAX. FLOOR THICKNESS NOTE ADDED	SJB

These details have been produced for guidance only. It is the responsibility of the building designer to ensure that the details shown are compatible with the overall building design and will satisfy the relevant parts of the Building Regulations applicable before they are adopted into the project design.

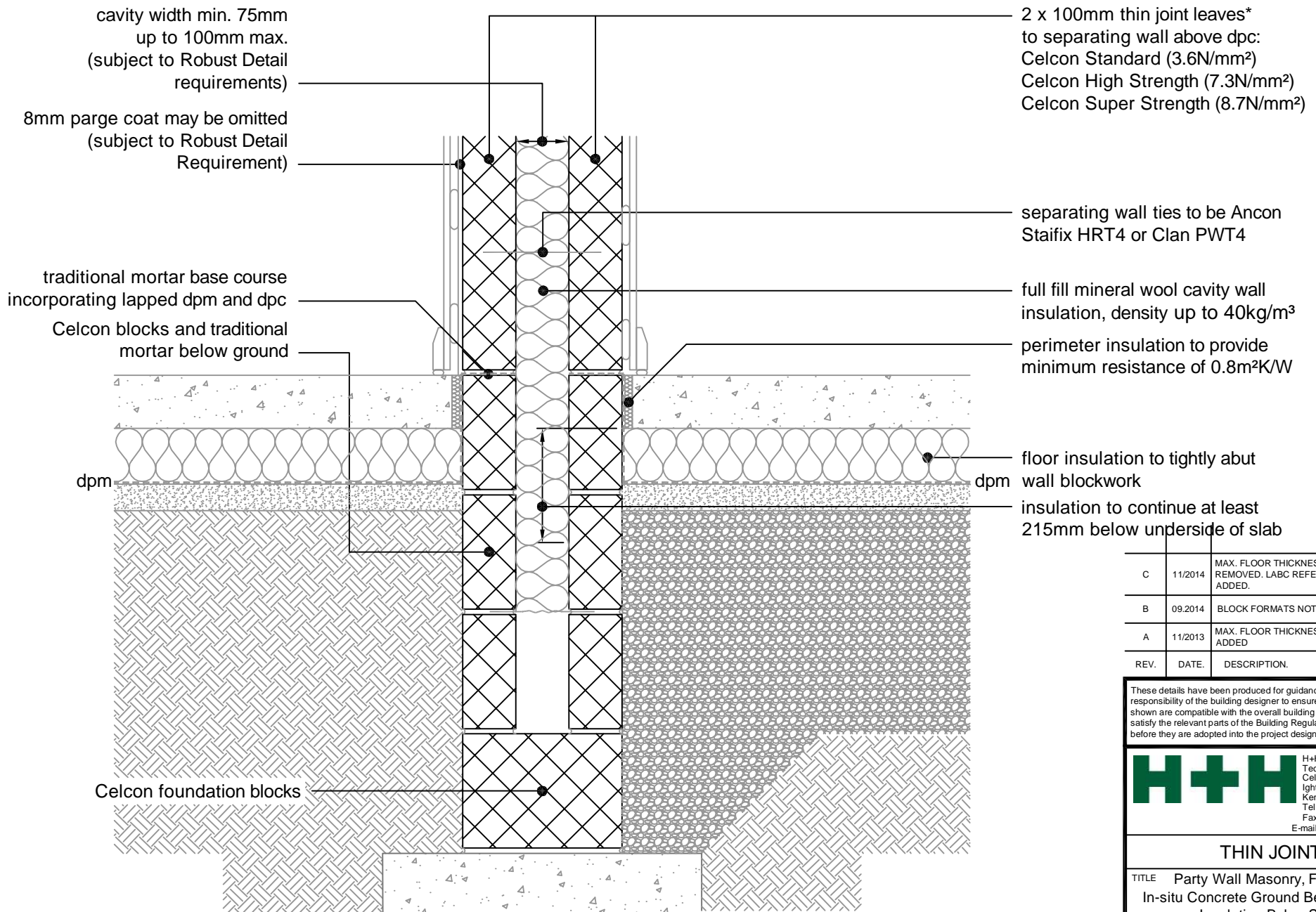
H+H H+H UK Limited
Technical Services Dept.
Celcon House
Ightham, Sevenoaks
Kent, TN15 9HZ.
Tel +44 (0)1732 880580
Fax +44 (0)1732 887013
E-mail tsd@hhcelcon.co.uk

THIN JOINT

TITLE	Party Wall Masonry, Full Fill - Suspended Concrete Floor, Insulation Below Slab		
DWG No.	HH-TJ-PW-18		
DRAWN BY	SJB	CHECKED BY	AHR
DATE	Nov 2012	SCALE	1:100 @ A4
		REV.NO.	C

* Thin joint block formats are:
Plus = 630mm x 215mm
Jumbo Blok = 630mm x 250mm
Multiplate = 630mm x 350mm
in 2mm Celfix mortar joints

For Ψ values applicable to this detail,
see Constructive Details CD0018
or
LABC Registered Construction
Details P1PCFF3 - 4.



* Thin joint block formats are:
 Plus = 630mm x 215mm
 Jumbo Blok = 630mm x 250mm
 Multiplate = 630mm x 350mm
 in 2mm Celfix mortar joints

For Ψ values applicable to this detail,
 see Constructive Details CD0019
 or
 LABC Registered Construction
 Details P1PCFF5 - 6.

REV.	DATE.	DESCRIPTION.	BY.
C	11/2014	MAX. FLOOR THICKNESS NOTE REMOVED. LABC REFERENCE ADDED.	SJB
B	09.2014	BLOCK FORMATS NOTE REVISED	SJB
A	11/2013	MAX. FLOOR THICKNESS NOTE ADDED	SJB

These details have been produced for guidance only. It is the responsibility of the building designer to ensure that the details shown are compatible with the overall building design and will satisfy the relevant parts of the Building Regulations applicable before they are adopted into the project design.

H+H H+H UK Limited
 Technical Services Dept.
 Celcon House
 Ightham, Sevenoaks
 Kent, TN15 9HZ.
 Tel +44 (0)1732 880580
 Fax +44 (0)1732 887013
 E-mail tsd@hhcelcon.co.uk

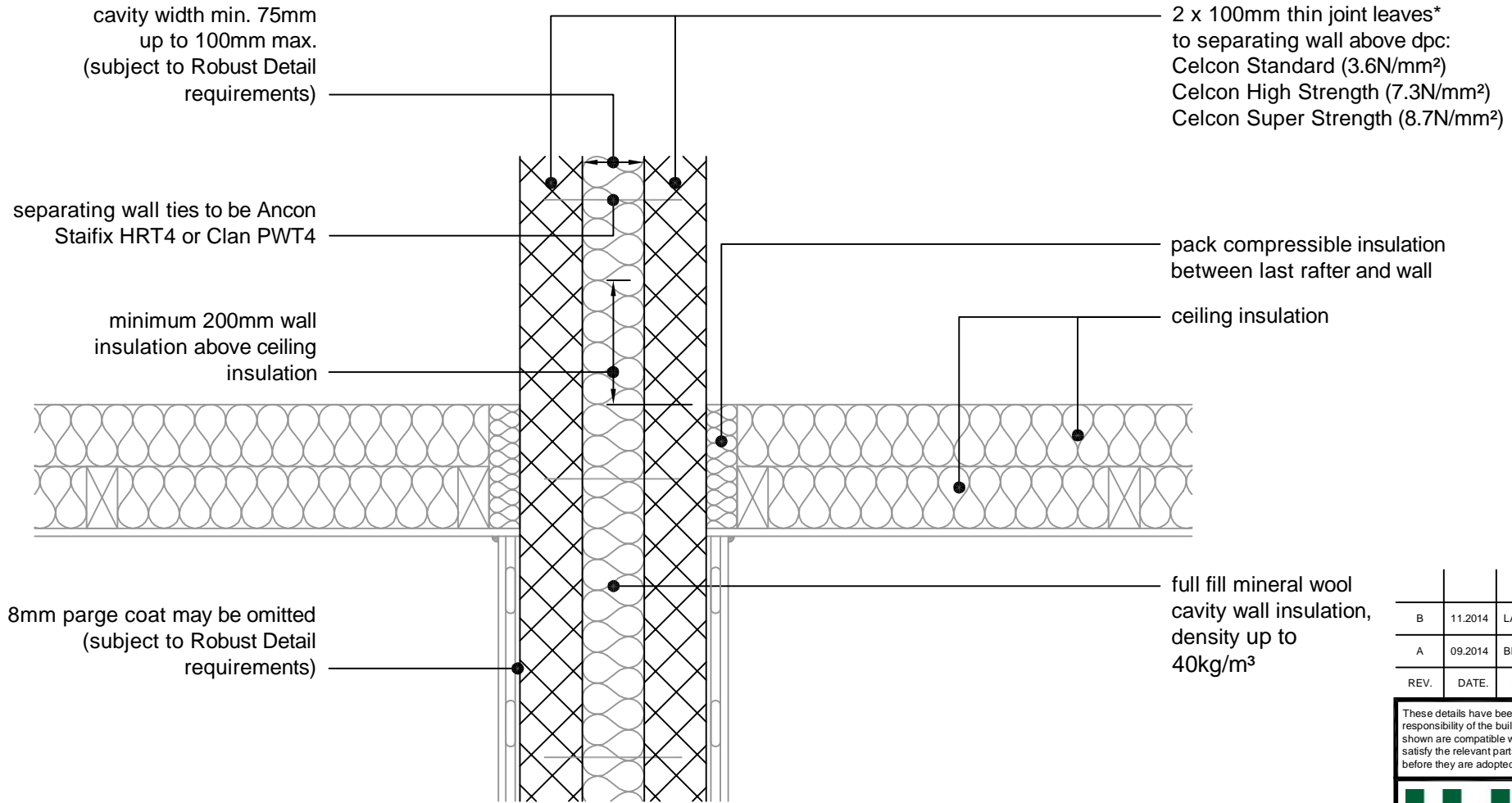
THIN JOINT

TITLE Party Wall Masonry, Full Fill -
 In-situ Concrete Ground Bearing Floor,
 Insulation Below Slab

DWG No. HH-TJ-PW-19

DRAWN BY SJB CHECKED BY AHR

DATE Nov 2012 SCALE 1:100 @ A4 REV.NO. C



* Thin joint block formats are:
 Plus = 630mm x 215mm
 Jumbo Blok = 630mm x 250mm
 Multiplate = 630mm x 350mm
 in 2mm Celfix mortar joints

For Ψ values applicable to this detail,
 see Constructive Details CD0020
 or
 LABC Registered Construction
 Details P4PCFF1 - 2.

REV.	DATE.	DESCRIPTION.	BY.
B	11.2014	LABC NOTE ADDED	SJB
A	09.2014	BLOCK FORMATS NOTE REVISED	SJB

These details have been produced for guidance only. It is the responsibility of the building designer to ensure that the details shown are compatible with the overall building design and will satisfy the relevant parts of the Building Regulations applicable before they are adopted into the project design.

H+H H+H UK Limited
 Technical Services Dept.
 Celcon House
 Ightham, Sevenoaks
 Kent, TN15 9HZ.
 Tel +44 (0)1732 880580
 Fax +44 (0)1732 887013
 E-mail tsd@hhcelcon.co.uk

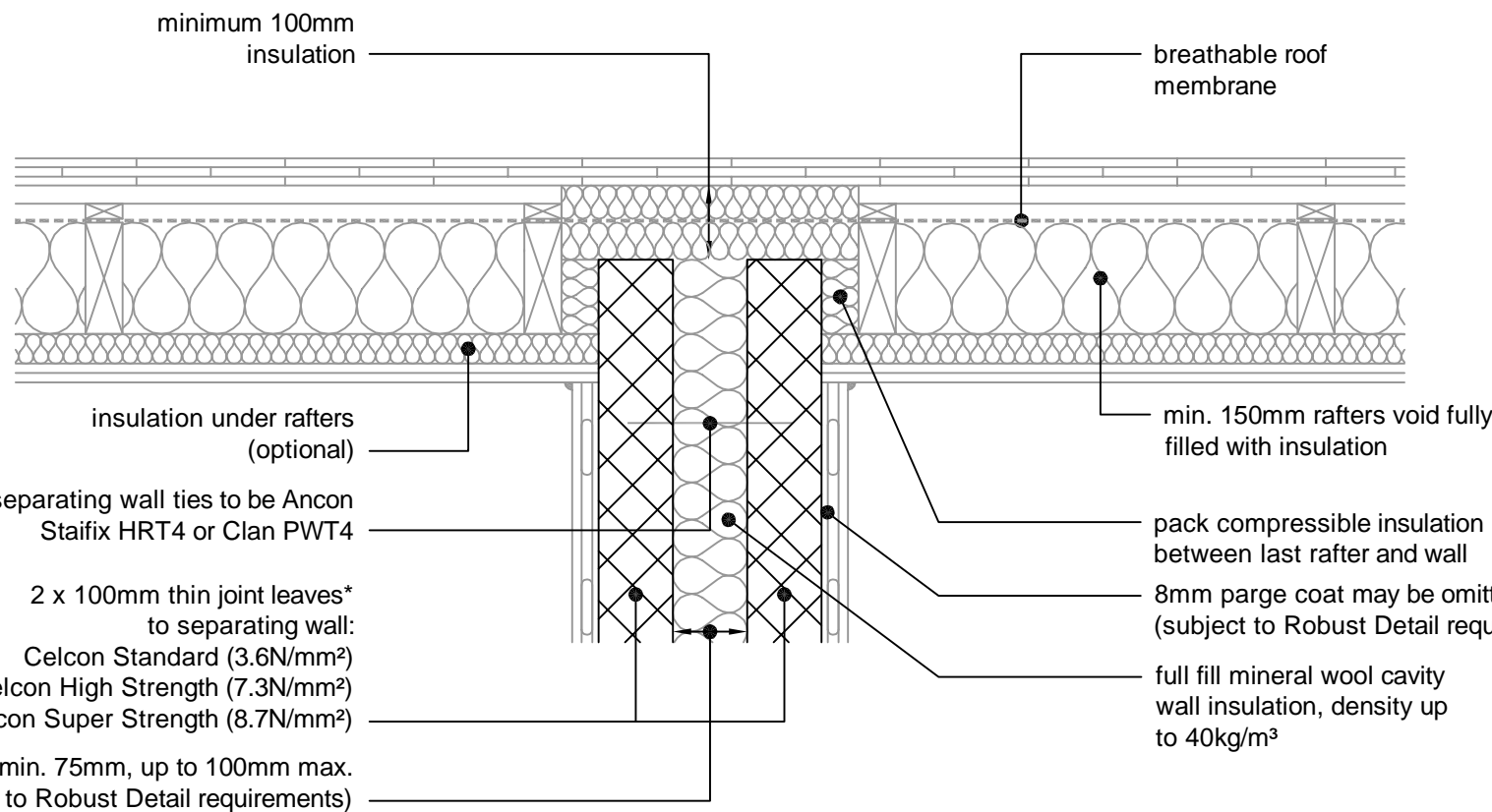
THIN JOINT

TITLE Party Wall Masonry, Full Fill -
 Roof, Insulated At Ceiling Level,
 Ventilated Loft

DWG No. HH-TJ-PW-20

DRAWN BY SJB CHECKED BY AHR

DATE Nov 2012 SCALE 1:100 @ A4 REV.NO. B



* Thin joint block formats are:
 Plus = 630mm x 215mm
 Jumbo Blok = 630mm x 250mm
 Multiplate = 630mm x 350mm
 in 2mm Celfix mortar joints

For Ψ values applicable to this detail,
 see Constructive Details CD0021
 or
 LABC Registered Construction
 Details P5PCFF1 - 2.

REV.	DATE	DESCRIPTION	BY.
C	11.2014	LABC NOTE ADDED	SJB
B	09.2014	BLOCK FORMATS NOTE REVISED	SJB
A	11/2013	RAFTERS INSULATION THICKNESS NOTE ADDED	SJB

These details have been produced for guidance only. It is the responsibility of the building designer to ensure that the details shown are compatible with the overall building design and will satisfy the relevant parts of the Building Regulations applicable before they are adopted into the project design.

H+H H+H UK Limited
 Technical Services Dept.
 Celcon House
 Ightham, Sevenoaks
 Kent, TN15 9HZ.
 Tel +44 (0)1732 880580
 Fax +44 (0)1732 887013
 E-mail tsd@hhcelcon.co.uk

THIN JOINT		
TITLE	Party Wall Masonry, Full Fill - Roof, Insulated At Rafter Level, Unventilated Rafter Void	
DWG No.	HH-TJ-PW-21	
DRAWN BY	SJB	CHECKED BY AHR
DATE	Nov 2012	SCALE 1:100 @ A4
REV.NO.	C	