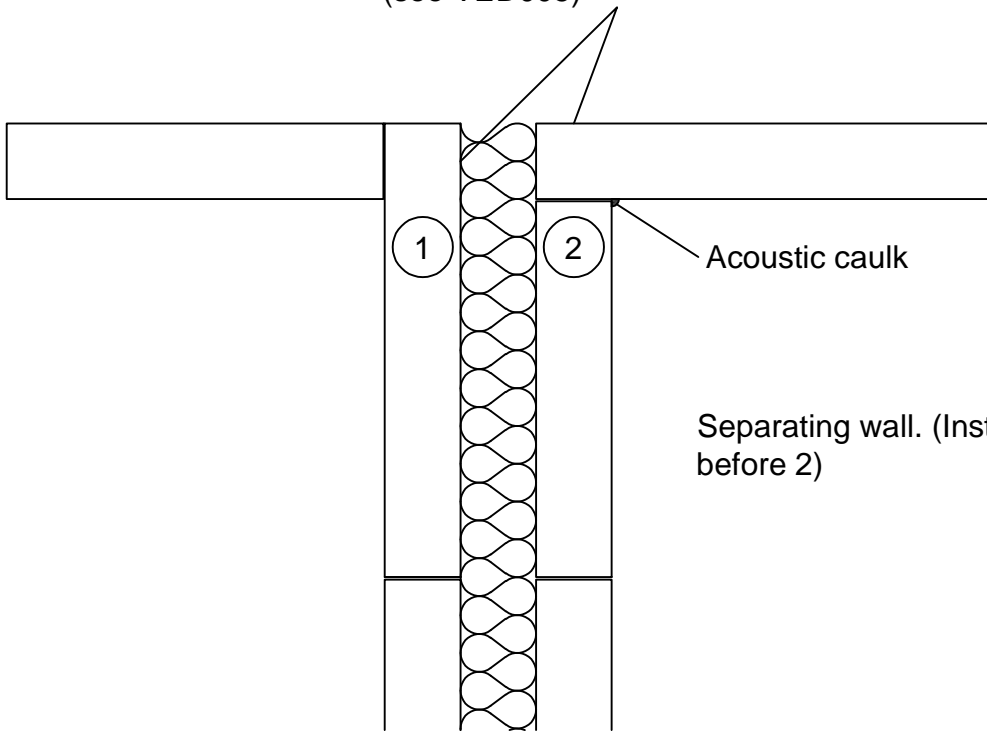


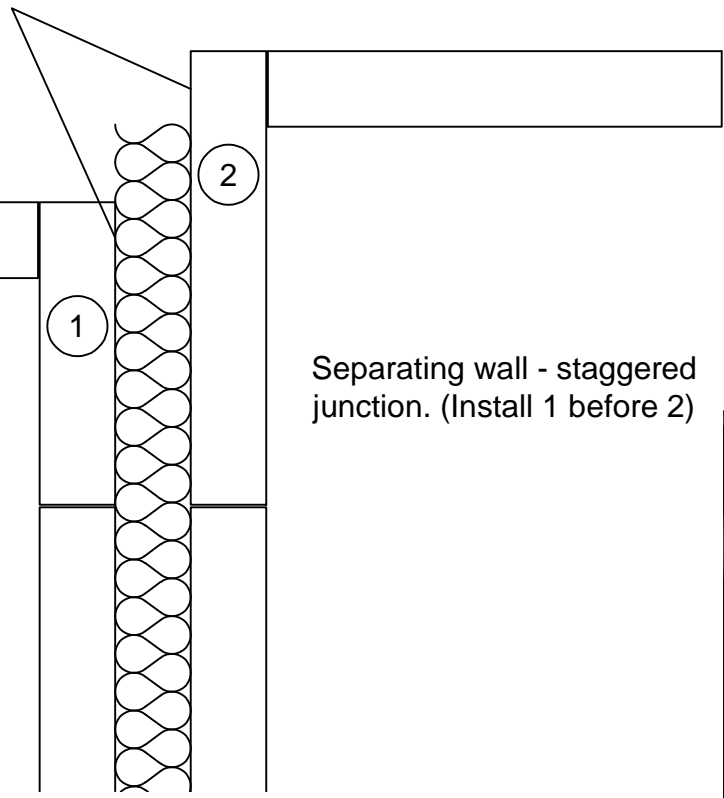
Helical ties @ 300mm Centres
(see VED005)



Acoustic caulk

Separating wall. (Install 1 before 2)

Helical ties @ 300mm Centres
(see VED005)



Separating wall - staggered junction. (Install 1 before 2)

REV.	DATE.	DESCRIPTION.	BY.

These details have been produced for guidance only. It is the responsibility of the building designer to ensure that the details shown are compatible with the overall building design and will satisfy the relevant parts of the Building Regulations applicable before they are adopted into the project design.



H+H UK Limited
Technical Services Dept.
Celcon House
Ightham, Sevenoaks
Kent, TN15 9HZ.
Tel +44 (0)1732 880580
E-mail tsd@hhcelcon.co.uk

TITLE Vertical Wall Panel
Alternative separating wall details.

DWG No. VED006a

DRAWN BY MAB CHECKED BY SJK

DATE 2/03/17 SCALE NTS REV.NO. 0