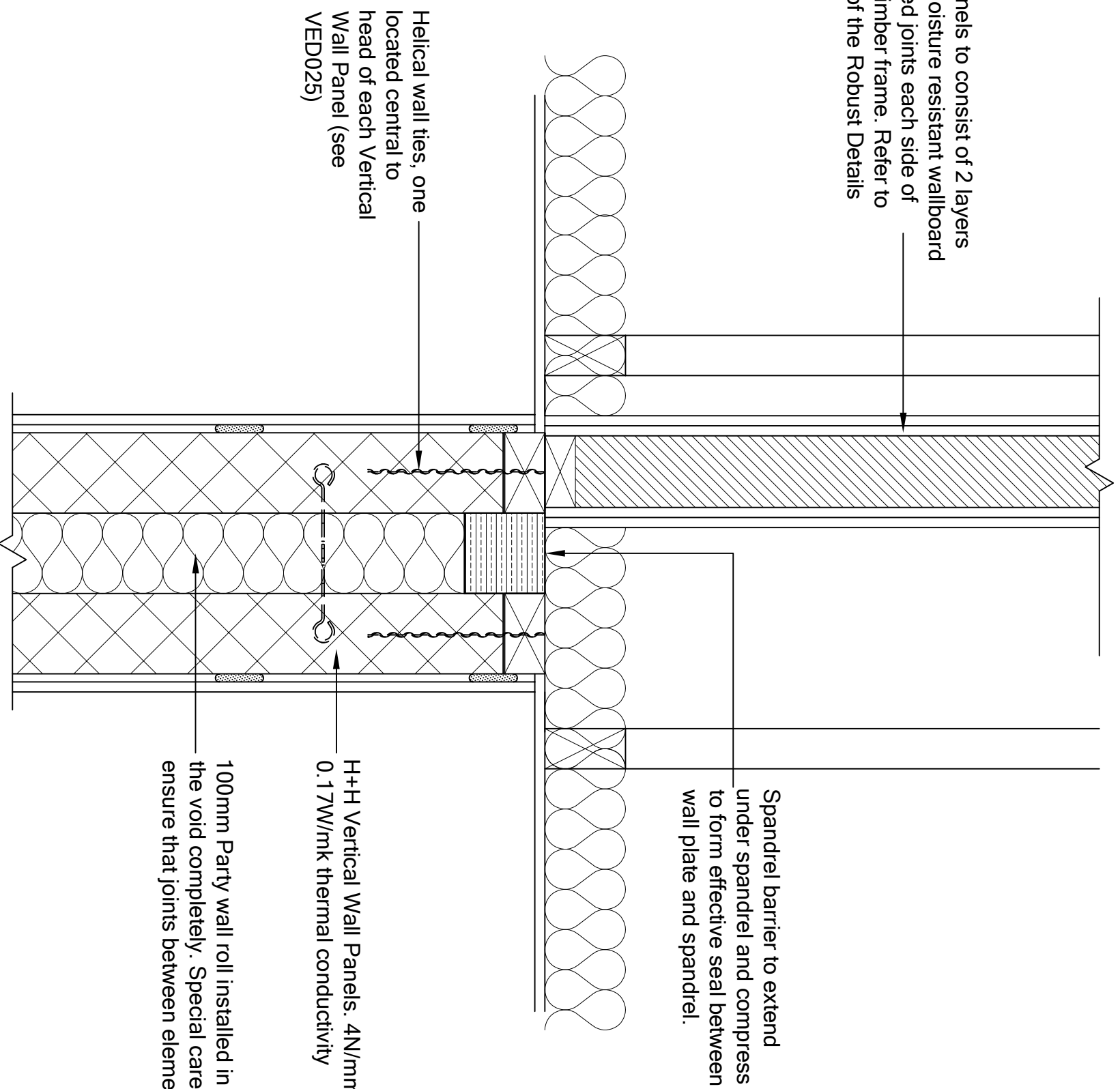


Party wall panels to consist of 2 layers of 12.5mm moisture resistant wallboard with staggered joints each side of 89mm thick timber frame. Refer to Appendix A of the Robust Details handbook.



Spandrel barrier to extend under spandrel and compress to form effective seal between wall plate and spandrel.

Helical wall ties, one located central to head of each Vertical Wall Panel (see VED025)

H+H Vertical Wall Panels. 4N/mm² compressive Strength
0.17W/mk thermal conductivity

100mm Party wall roll installed in the cavity filling the void completely. Special care must be taken to ensure that joints between elements are fully filled.

These details have been produced for guidance only. It is the responsibility of the building designer to ensure that the details shown are compatible with the overall building design and will satisfy the relevant parts of the Building Regulations applicable before they are adopted into the project design.



H+H UK Limited
Technical Services Dept.
Celicon House
Ighiteam, Sevenoaks
Kent, TN15 9HZ
Tel +44 (0)1732 880580
E-mail tsd@hncealicon.co.uk

TITLE
Single Spandrel Panel connection at
Vertical Wall Panel separating wall

DWG No.

VED027

DRAWN BY

MAB

CHECKED BY

DATE

28/09/18

SCALE

NTS

REV.NO.

00