

12.5mm Plasterboard on 10mm Dabs to both sides.

Staifix HRT4 or other approved AD E Type A tie.

Vertical Wall Panels.  
Compressive strength 4N/mm<sup>2</sup>. Thermal conductivity - 0.17W/Mk

100mm Full Fill party wall cavity Insulation taken to 225mm below underside of block and beam floor.

Perimeter edge insulation

Visqueen Vapour Barrier

Reinforced sand/cement screed

VCL

Rigid floor insulation

DPM

Block and Beam floor.

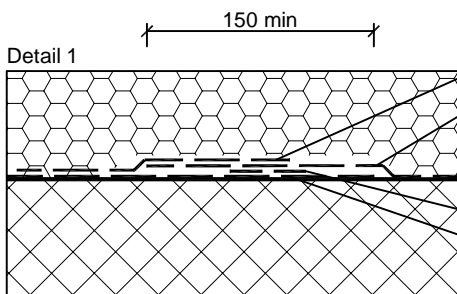
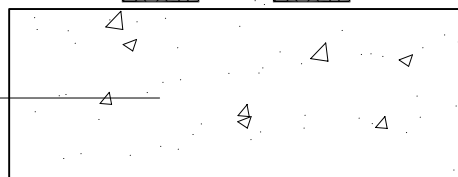
Visqueen Zedex CPT DPC

150 min air space

See detail 1

Lean mix infill (225mm from underside of floor beam)

Foundation design and depth as per Structural Engineer's specification.



Visqueen GR Lap tape

Visqueen Radon membrane

Visqueen Pro d/sided Jointing tape (50mmx10m)

Visqueen Zedex CPT DPC

Junction of Separating wall and 150mm Block and Beam ground floor - with Radon Barrier.

REV.	DATE.	DESCRIPTION.	BY.

These details have been produced for guidance only. It is the responsibility of the building designer to ensure that the details shown are compatible with the overall building design and will satisfy the relevant parts of the Building Regulations applicable before they are adopted into the project design.



H+H UK Limited  
Technical Services Dept.  
Celcon House  
Ightham, Sevenoaks  
Kent, TN15 9HZ.  
Tel +44 (0)1732 880580  
Email tsd@hhcelcon.co.uk

TITLE Vertical Wall Panel detail  
Separating wall / Ground floor  
Junction with Radon barrier

DWG No. VED034

DRAWN BY MAB CHECKED BY SJK

DATE 2/7/21 SCALE 1:100 REV.NO. 00