

Detail Ref.	Detail Title
HH-TJ-SW-01	Solid External Masonry Wall, Externally Insulated - Suspended Beam And Block Floor, Insulation Above Slab
HH-TJ-SW-02	Solid External Masonry Wall, Externally Insulated - Suspended In-Situ Concrete Floor, Insulation Below Slab
HH-TJ-SW-03	Solid External Masonry Wall, Externally Insulated - Concrete Ground Bearing Floor, Insulation Below Slab
HH-TJ-SW-04	Solid External Masonry Wall, Externally Insulated - Solid Wall Lintel
HH-TJ-SW-05	Solid External Masonry Wall, Externally Insulated - Sill
HH-TJ-SW-06	Solid External Masonry Wall, Externally Insulated - Jamb
HH-TJ-SW-07	Solid External Masonry Wall, Externally Insulated - Intermediate Timber Floor Within A Dwelling
HH-TJ-SW-08	Solid External Masonry Wall, Externally Insulated - Precast Concrete Separating Floor Between Dwellings
HH-TJ-SW-09	Solid External Masonry Wall, Externally Insulated - Pitched Roof, Gable, Insulation At Ceiling Level, Ventilated Loft
HH-TJ-SW-10	Solid External Masonry Wall, Externally Insulated - Pitched Roof, Gable, Insulation At Rafter Level, Unventilated Rafter Void
HH-TJ-SW-11	Solid External Masonry Wall, Externally Insulated - Pitched Roof, Eaves, Insulation At Ceiling Level, Ventilated Loft
HH-TJ-SW-12	Solid External Masonry Wall, Externally Insulated - Pitched Roof, Eaves, Insulation At Rafter Level, Unventilated Rafter Void
HH-TJ-SW-13	Solid External Masonry Wall, Externally Insulated - Normal Corner
HH-TJ-SW-14	Solid External Masonry Wall, Externally Insulated - Inverted Corner
HH-TJ-SW-15	Solid External Masonry Wall, Externally Insulated - Party Wall Between Dwellings

REV.	DATE.	DESCRIPTION.	BY.
B	11.2015	LABC NOTE ADDED.	SJB
A	09.2014	BLOCK FORMATS NOTE REVISED	SJB

These details have been produced for guidance only. It is the responsibility of the building designer to ensure that the details shown are compatible with the overall building design and will satisfy the relevant parts of the Building Regulations applicable before they are adopted into the project design.

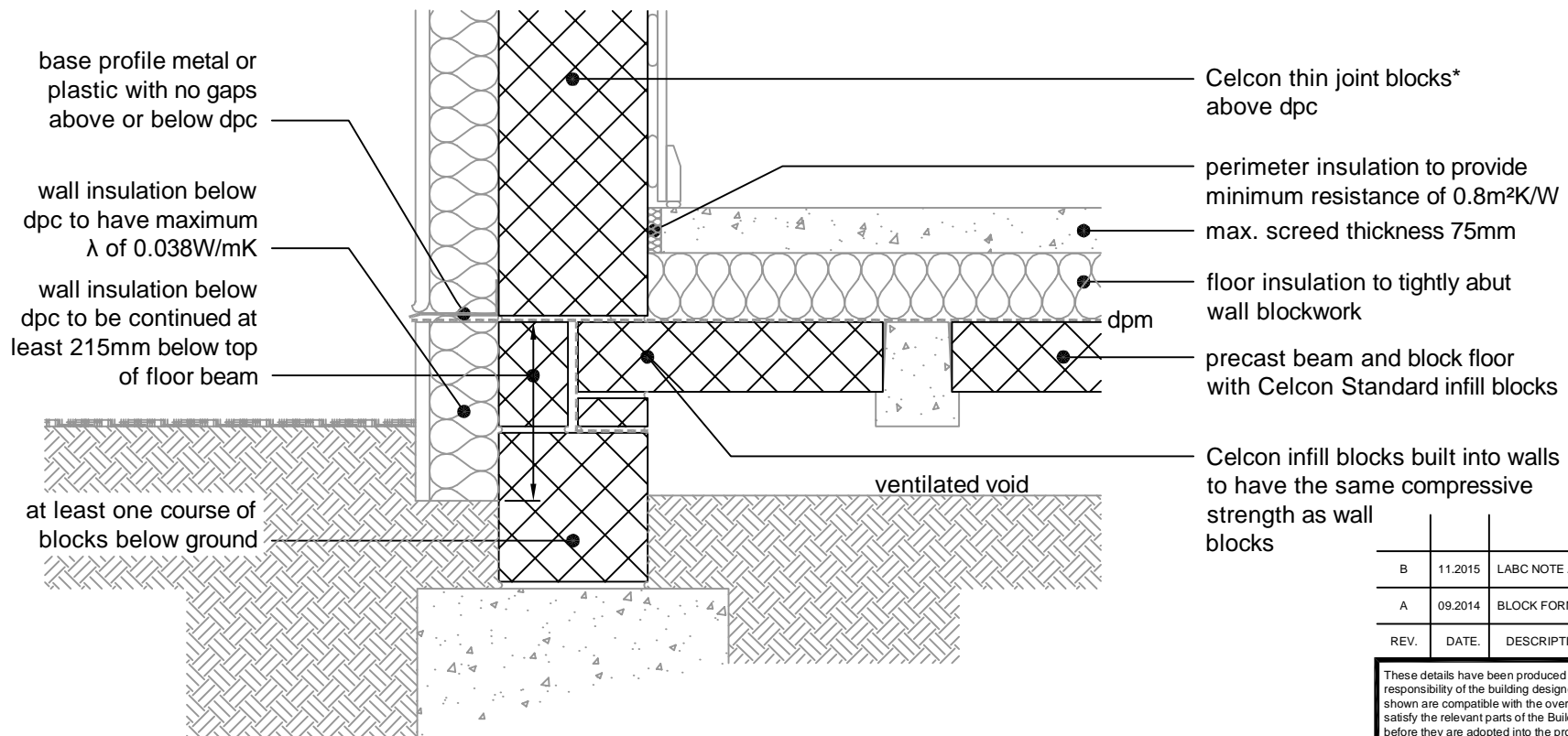
**H+H** H+H UK Limited  
 Technical Services Dept.  
 Celcon House  
 Ightham, Sevenoaks  
 Kent, TN15 9HZ.  
 Tel +44 (0)1732 880580  
 Fax +44 (0)1732 887013  
 E-mail tsd@hhcelcon.co.uk

TITLE **Thin Joint Junction Details  
 (solid wall with external insulation)**

DWG No. **INDEX**

DRAWN BY **SJB** CHECKED BY **AHR**

DATE **Nov 2013** SCALE **N.T.S.** REV.NO. **B**



\* Thin joint block formats are:  
 Plus = 630mm x 215mm  
 Jumbo Blok = 630mm x 250mm  
 Multiplate = 630mm x 350mm  
 in 2mm Celfix mortar joints

For  $\Psi$  values applicable to this detail,  
 see Constructive Details CD0038  
 or  
 LABC Registered Construction  
 Details E5SMEW1 - 12.

REV.	DATE	DESCRIPTION	BY.
B	11.2015	LABC NOTE ADDED.	SJB
A	09.2014	BLOCK FORMATS NOTE REVISED	SJB

These details have been produced for guidance only. It is the responsibility of the building designer to ensure that the details shown are compatible with the overall building design and will satisfy the relevant parts of the Building Regulations applicable before they are adopted into the project design.

**H+H** H+H UK Limited  
 Technical Services Dept.  
 Celcon House  
 Ightham, Sevenoaks  
 Kent, TN15 9HZ.  
 Tel +44 (0)1732 880580  
 Fax +44 (0)1732 887013  
 E-mail tsd@hhcelcon.co.uk

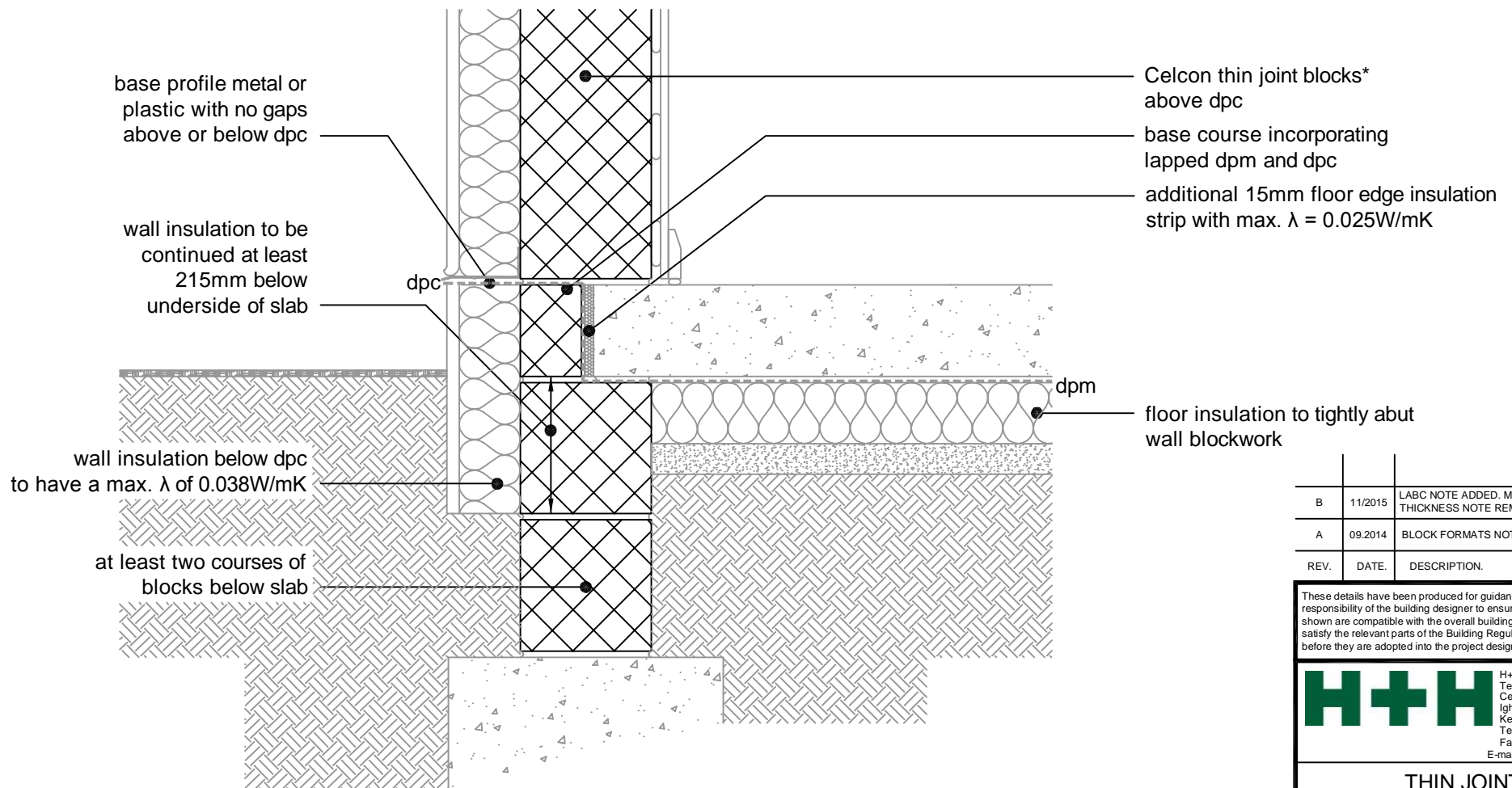
**THIN JOINT**

TITLE Solid External Masonry Wall,  
 Externally Insulated - Suspended Beam  
 And Block Floor, Insulation Above Slab

DWG No. HH-TJ-SW-01

DRAWN BY SJB CHECKED BY AHR

DATE Nov 2013 SCALE 1:100 @ A4 REV.NO. B



\* Thin joint block formats are:  
 Plus = 630mm x 215mm  
 Jumbo Blok = 630mm x 250mm  
 Multiplate = 630mm x 350mm  
 in 2mm Celfix mortar joints

For  $\Psi$  values applicable to this detail,  
 see Constructive Details CD0039  
 or  
 LABC Registered Construction  
 Details E5SMEW13 - 24.

REV.	DATE	DESCRIPTION	BY.
B	11/2015	LABC NOTE ADDED. MAX. FLOOR THICKNESS NOTE REMOVED.	SJB
A	09.2014	BLOCK FORMATS NOTE REVISED	SJB

These details have been produced for guidance only. It is the responsibility of the building designer to ensure that the details shown are compatible with the overall building design and will satisfy the relevant parts of the Building Regulations applicable before they are adopted into the project design.

**H+H** H+H UK Limited  
 Technical Services Dept.  
 Celcon House  
 Ightham, Sevenoaks  
 Kent, TN15 9HZ.  
 Tel +44 (0)1732 880580  
 Fax +44 (0)1732 887013  
 E-mail [tsd@hhcelcon.co.uk](mailto:tsd@hhcelcon.co.uk)

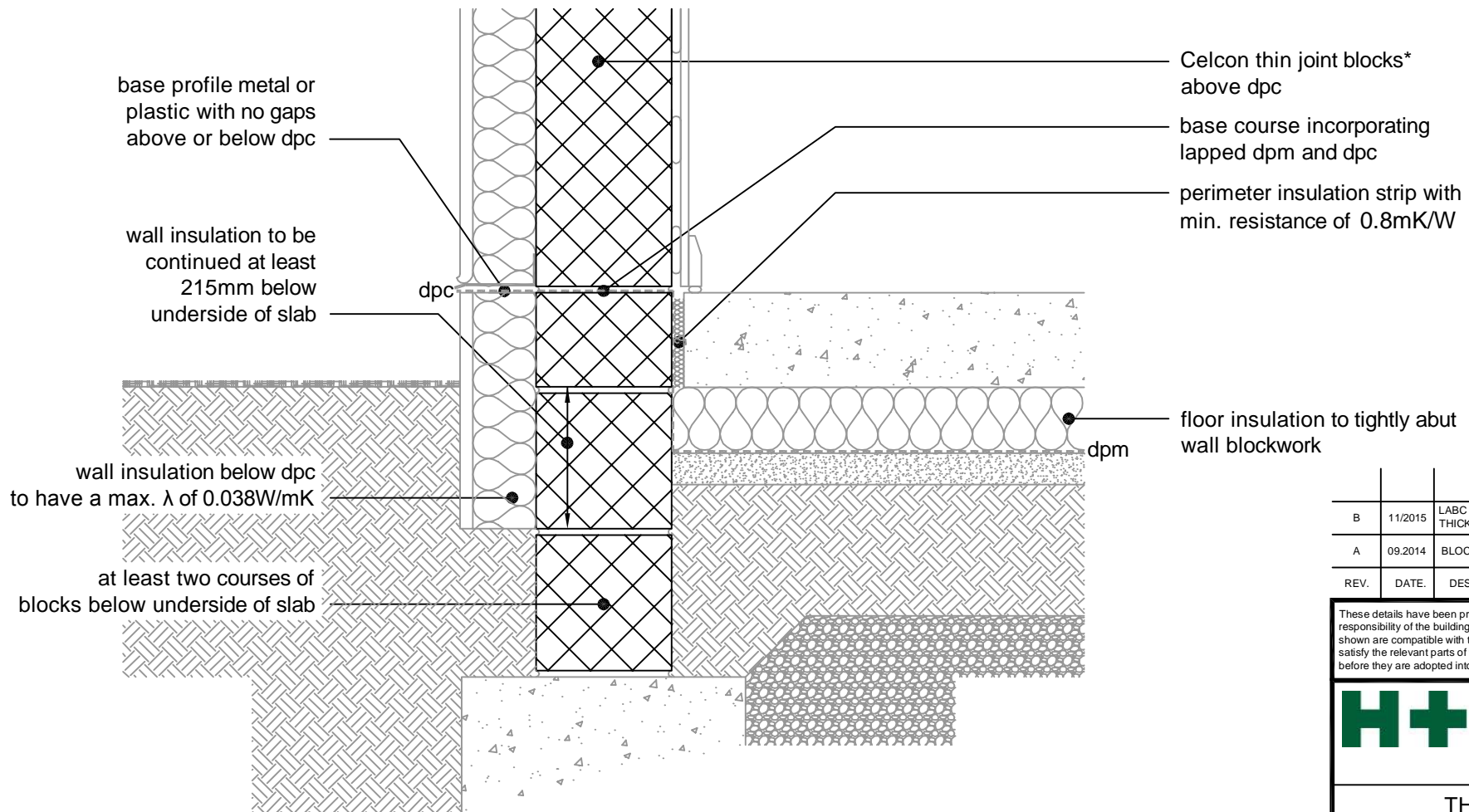
**THIN JOINT**

TITLE Solid External Masonry Wall,  
 Externally Insulated - Suspended In-Situ  
 Concrete Floor, Insulation Below Slab

DWG No. HH-TJ-SW-02

DRAWN BY SJB CHECKED BY AHR

DATE Nov 2013 SCALE 1:100 @ A4 REV.NO. B



\* Thin joint block formats are:  
 Plus = 630mm x 215mm  
 Jumbo Blok = 630mm x 250mm  
 Multiplate = 630mm x 350mm  
 in 2mm Celfix mortar joints

For  $\Psi$  values applicable to this detail,  
 see Constructive Details CD0040  
 or  
 LABC Registered Construction  
 Details E5SMEW25 - 36.

REV.	DATE	DESCRIPTION	BY.
B	11/2015	LABC NOTE ADDED. MAX. FLOOR THICKNESS NOTE REMOVED.	SJB
A	09.2014	BLOCK FORMATS NOTE REVISED	SJB

These details have been produced for guidance only. It is the responsibility of the building designer to ensure that the details shown are compatible with the overall building design and will satisfy the relevant parts of the Building Regulations applicable before they are adopted into the project design.

**H+H** H+H UK Limited  
 Technical Services Dept.  
 Celcon House  
 Ightham, Sevenoaks  
 Kent, TN15 9HZ.  
 Tel +44 (0)1732 880580  
 Fax +44 (0)1732 887013  
 E-mail tsd@hhcelcon.co.uk

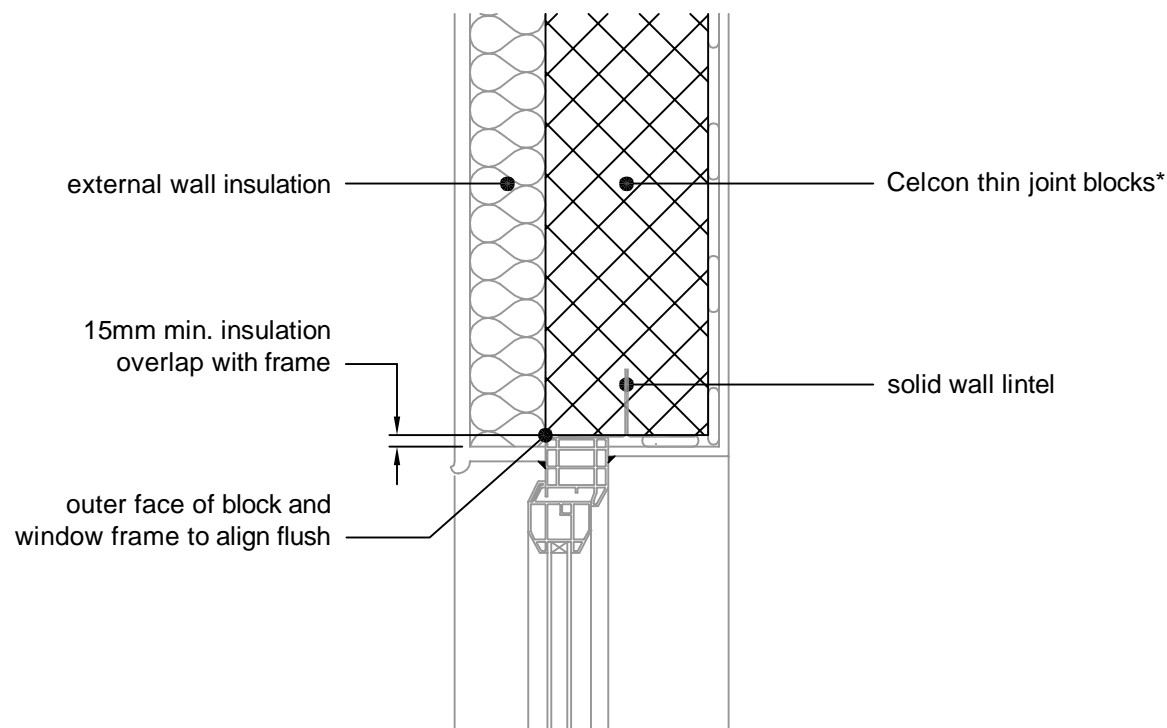
### THIN JOINT

TITLE Solid External Masonry Wall,  
 Externally Insulated - Concrete Ground  
 Bearing Floor, Insulation Below Slab

DWG No. HH-TJ-SW-03

DRAWN BY SJB CHECKED BY AHR

DATE Nov 2013 SCALE 1:100 @ A4 REV.NO. B



\* Thin joint block formats are:  
 Plus = 630mm x 215mm  
 Jumbo Blok = 630mm x 250mm  
 Multiplate = 630mm x 350mm  
 in 2mm Celfix mortar joints

For  $\Psi$  values applicable to this detail,  
 see Constructive Details CD0041  
 or  
 LABC Registered Construction  
 Details E2SMEW1 - 6.

REV.	DATE	DESCRIPTION	BY.
B	11/2015	LABC NOTE ADDED.	SJB
A	09.2014	BLOCK FORMATS NOTE REVISED	SJB

These details have been produced for guidance only. It is the responsibility of the building designer to ensure that the details shown are compatible with the overall building design and will satisfy the relevant parts of the Building Regulations applicable before they are adopted into the project design.

**H+H** H+H UK Limited  
 Technical Services Dept.  
 Celcon House  
 Ightham, Sevenoaks  
 Kent, TN15 9HZ.  
 Tel +44 (0)1732 880580  
 Fax +44 (0)1732 887013  
 E-mail tsd@hhcelcon.co.uk

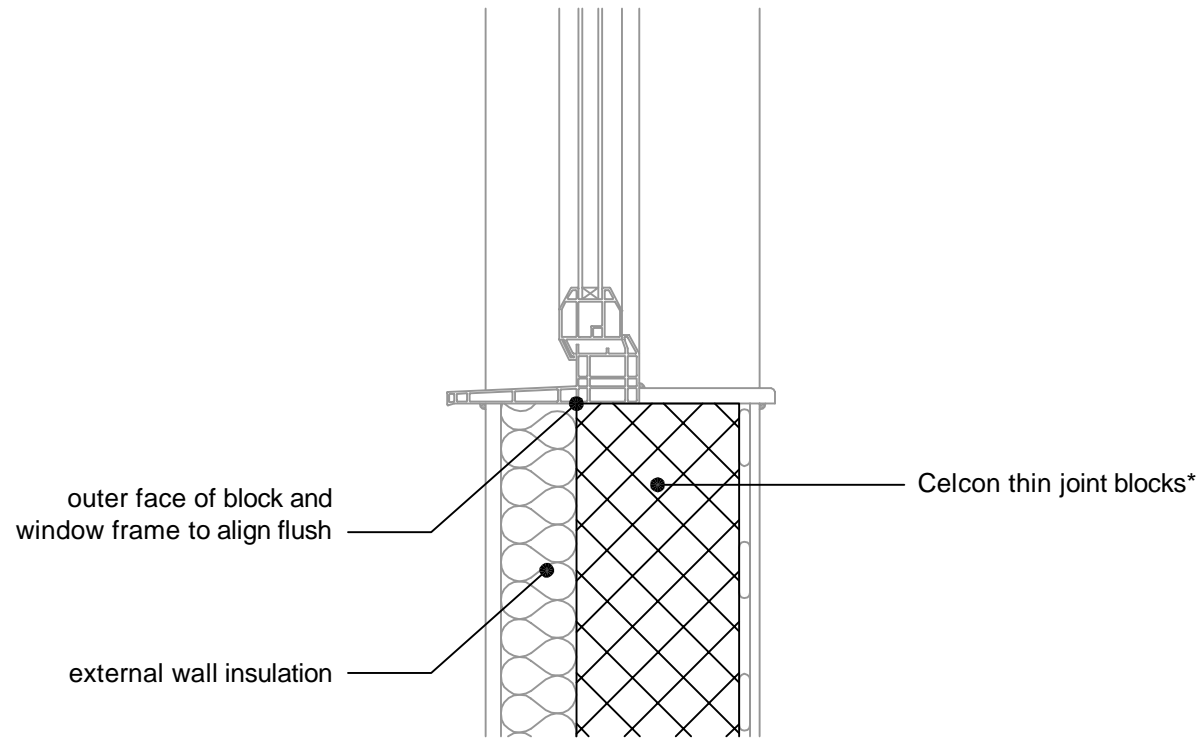
**THIN JOINT**

TITLE  
 Solid External Masonry Wall,  
 Externally Insulated - Solid Wall Lintel

DWG No. **HH-TJ-SW-04**

DRAWN BY **SJB** CHECKED BY **AHR**

DATE **Nov 2013** SCALE **1:100 @ A4** REV.NO. **B**



\* Thin joint block formats are:  
 Plus = 630mm x 215mm  
 Jumbo Blok = 630mm x 250mm  
 Multiplate = 630mm x 350mm  
 in 2mm Celfix mortar joints

For  $\Psi$  values applicable to this detail,  
 see Constructive Details CD0042  
 or  
 LABC Registered Construction  
 Details E3SMEW1 - 6.

REV.	DATE	DESCRIPTION	BY.
B	11/2015	LABC NOTE ADDED.	SJB
A	09.2014	BLOCK FORMATS NOTE REVISED	SJB

These details have been produced for guidance only. It is the responsibility of the building designer to ensure that the details shown are compatible with the overall building design and will satisfy the relevant parts of the Building Regulations applicable before they are adopted into the project design.

**H+H** H+H UK Limited  
 Technical Services Dept.  
 Celcon House  
 Ightham, Sevenoaks  
 Kent, TN15 9HZ.  
 Tel +44 (0)1732 880580  
 Fax +44 (0)1732 887013  
 E-mail [tsd@hhcelcon.co.uk](mailto:tsd@hhcelcon.co.uk)

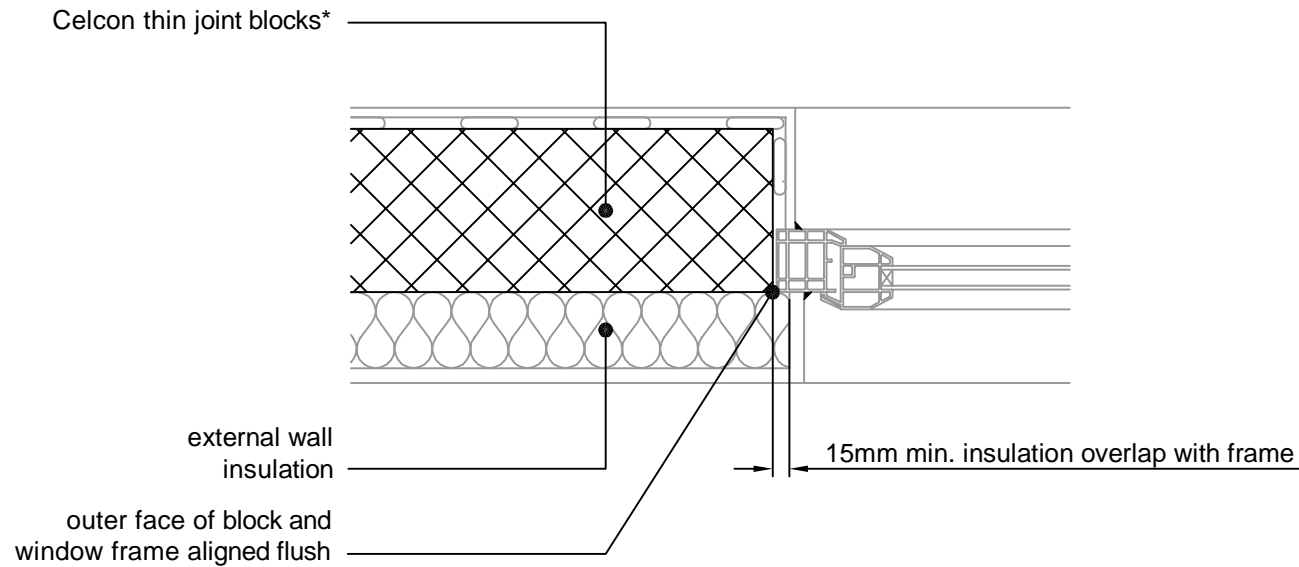
**THIN JOINT**

TITLE  
 Solid External Masonry Wall,  
 Externally Insulated - Sill

DWG No. HH-TJ-SW-05

DRAWN BY **SJB** CHECKED BY **AHR**

DATE Nov 2013 SCALE 1:100 @ A4 REV.NO. B



\* Thin joint block formats are:  
 Plus = 630mm x 215mm  
 Jumbo Blok = 630mm x 250mm  
 Multiplate = 630mm x 350mm  
 in 2mm Celfix mortar joints

For  $\Psi$  values applicable to this detail,  
 see Constructive Details CD0043  
 or  
 LABC Registered Construction  
 Details E4SMEW1 - 6.

REV.	DATE	DESCRIPTION	BY.
B	11/2015	LABC NOTE ADDED.	SJB
A	09.2014	BLOCK FORMATS NOTE REVISED	SJB

These details have been produced for guidance only. It is the responsibility of the building designer to ensure that the details shown are compatible with the overall building design and will satisfy the relevant parts of the Building Regulations applicable before they are adopted into the project design.

**H+H** H+H UK Limited  
 Technical Services Dept.  
 Celcon House  
 Ightham, Sevenoaks  
 Kent, TN15 9HZ.  
 Tel +44 (0)1732 880580  
 Fax +44 (0)1732 887013  
 E-mail tsd@hhcelcon.co.uk

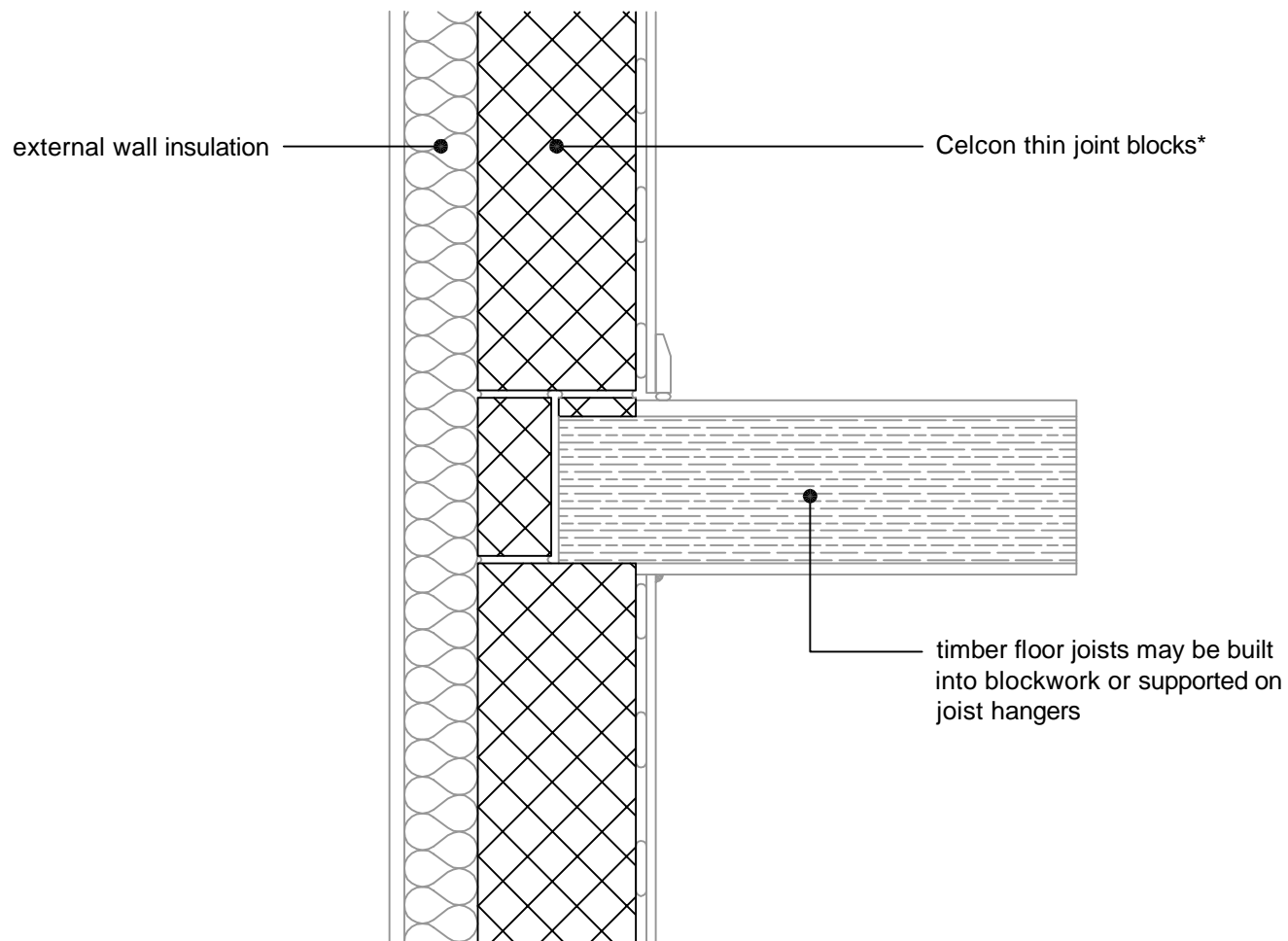
**THIN JOINT**

TITLE  
 Solid External Masonry Wall,  
 Externally Insulated - Jamb

DWG No. HH-TJ-SW-06

DRAWN BY SJB CHECKED BY AHR

DATE Nov 2013 SCALE 1:100 @ A4 REV.NO. B



\* Thin joint block formats are:  
 Plus = 630mm x 215mm  
 Jumbo Blok = 630mm x 250mm  
 Multiplate = 630mm x 350mm  
 in 2mm Celfix mortar joints

For  $\Psi$  values applicable to this detail,  
 see Constructive Details CD0044  
 or  
 LABC Registered Construction  
 Details E6SMEW1 - 6.

REV.	DATE	DESCRIPTION	BY.
B	11/2015	LABC NOTE ADDED.	SJB
A	09.2014	BLOCK FORMATS NOTE REVISED	SJB

These details have been produced for guidance only. It is the responsibility of the building designer to ensure that the details shown are compatible with the overall building design and will satisfy the relevant parts of the Building Regulations applicable before they are adopted into the project design.

**H+H** H+H UK Limited  
 Technical Services Dept.  
 Celcon House  
 Ightham, Sevenoaks  
 Kent, TN15 9HZ.  
 Tel +44 (0)1732 880580  
 Fax +44 (0)1732 887013  
 E-mail tsd@hhcelcon.co.uk

### THIN JOINT

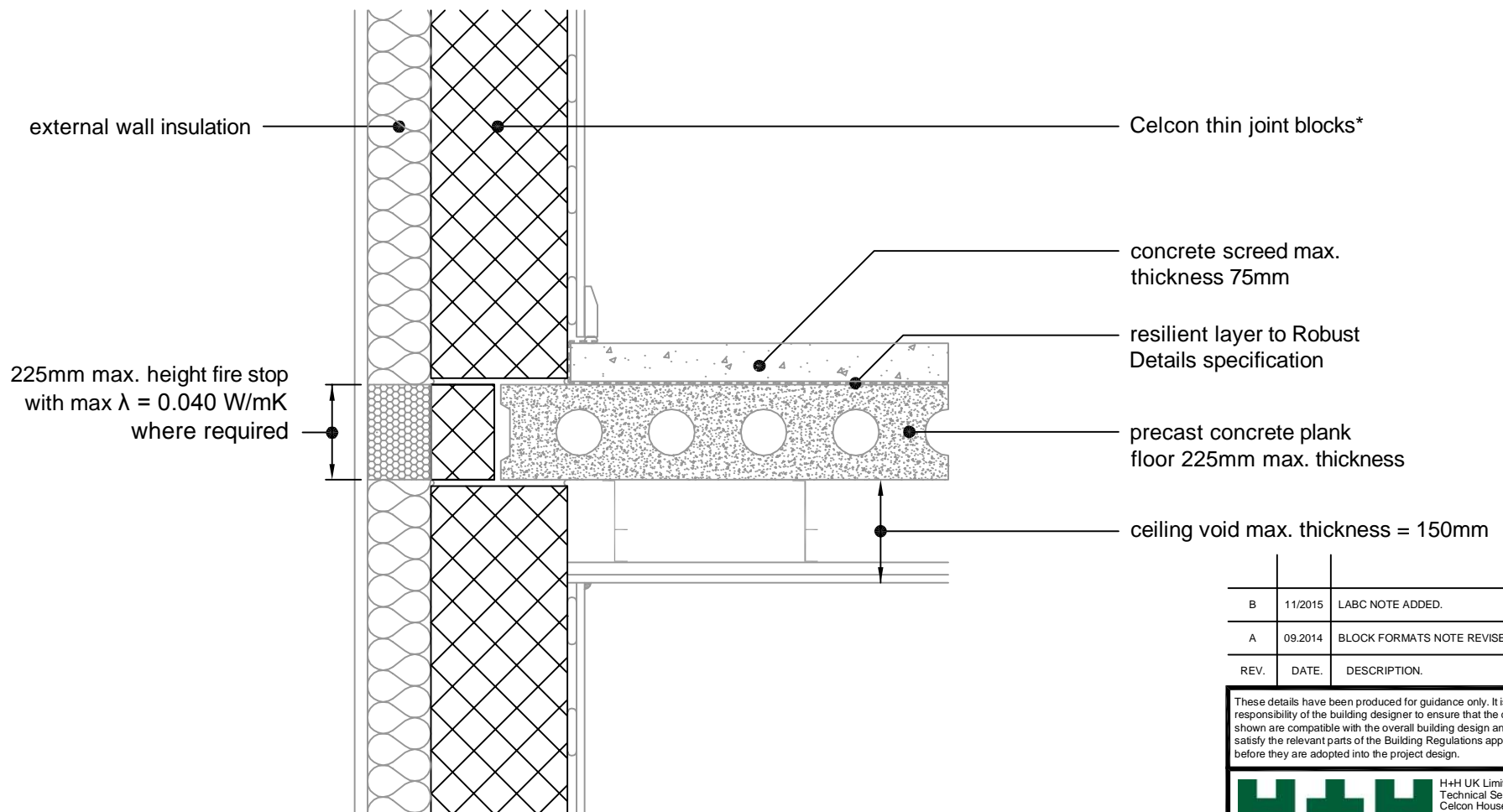
TITLE Solid External Masonry Wall,  
 Externally Insulated - Intermediate Timber  
 Floor Within A Dwelling

DWG No. HH-TJ-SW-07

DRAWN BY SJB CHECKED BY AHR

DATE Nov 2013 SCALE 1:100 @ A4 REV.NO. B





\* Thin joint block formats are:  
 Plus = 630mm x 215mm  
 Jumbo Blok = 630mm x 250mm  
 Multiplate = 630mm x 350mm  
 in 2mm Celfix mortar joints

For  $\Psi$  values applicable to this detail,  
 see Constructive Details CD0045  
 or  
 LABC Registered Construction  
 Details E7SMEW1 - 6.

REV.	DATE.	DESCRIPTION.	BY.
B	11/2015	LABC NOTE ADDED.	SJB
A	09.2014	BLOCK FORMATS NOTE REVISED	SJB

These details have been produced for guidance only. It is the responsibility of the building designer to ensure that the details shown are compatible with the overall building design and will satisfy the relevant parts of the Building Regulations applicable before they are adopted into the project design.

**H+H** H+H UK Limited  
 Technical Services Dept.  
 Celcon House  
 Ightham, Sevenoaks  
 Kent, TN15 9HZ.  
 Tel +44 (0)1732 880580  
 Fax +44 (0)1732 887013  
 E-mail tsd@hhcelcon.co.uk

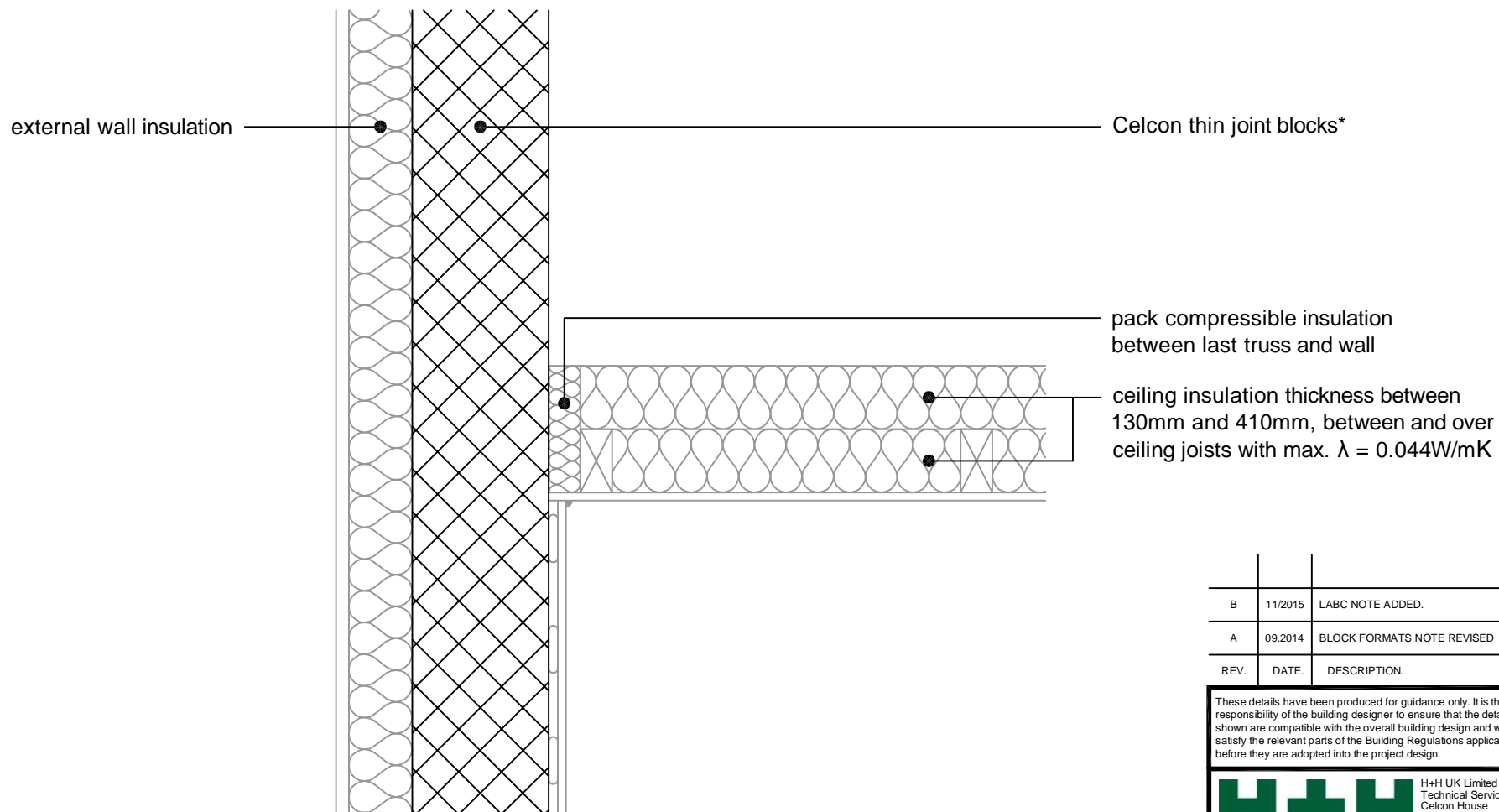
**THIN JOINT**

TITLE  
 Solid External Masonry Wall,  
 Externally Insulated - Precast Concrete  
 Separating Floor Between Dwellings

DWG No. HH-TJ-SW-08

DRAWN BY SJB CHECKED BY AHR

DATE Nov 2013 SCALE 1:100 @ A4 REV.NO. B



\* Thin joint block formats are:  
 Plus = 630mm x 215mm  
 Jumbo Blok = 630mm x 250mm  
 Multiplate = 630mm x 350mm  
 in 2mm Celfix mortar joints

For  $\Psi$  values applicable to this detail,  
 see Constructive Details CD0046  
 or  
 LABC Registered Construction  
 Details E12SMEW1 - 6.

REV.	DATE	DESCRIPTION	BY.
B	11/2015	LABC NOTE ADDED.	SJB
A	09.2014	BLOCK FORMATS NOTE REVISED	SJB

These details have been produced for guidance only. It is the responsibility of the building designer to ensure that the details shown are compatible with the overall building design and will satisfy the relevant parts of the Building Regulations applicable before they are adopted into the project design.

**H+H** H+H UK Limited  
 Technical Services Dept.  
 Celcon House  
 Ightham, Sevenoaks  
 Kent, TN15 9HZ.  
 Tel +44 (0)1732 880580  
 Fax +44 (0)1732 887013  
 E-mail tsd@hhcelcon.co.uk

### THIN JOINT

TITLE Solid External Masonry Wall,  
 Externally Insulated - Pitched Roof, Gable,  
 Insulation At Ceiling Level, Ventilated Loft

DWG No. HH-TJ-SW-09

DRAWN BY SJB CHECKED BY AHR

DATE Nov 2013 SCALE 1:100 @ A4 REV.NO. B

fill this void with insulation having  
a max.  $\lambda$  of 0.040W/mK

100mm minimum

external wall insulation

breathable roof  
membrane

min. 150mm rafters void fully  
filled with insulation with  
max.  $\lambda$  = 0.040W/mK

insulation under rafters  
(optional)

pack compressible insulation  
between last rafter and wall

Celcon thin joint blocks\*

\* Thin joint block formats are:  
Plus = 630mm x 215mm  
Jumbo Blok = 630mm x 250mm  
Multiplate = 630mm x 350mm  
in 2mm Celfix mortar joints

For  $\Psi$  values applicable to this detail,  
see Constructive Details CD0047  
or  
LABC Registered Construction  
Details E13SMEW1 - 6.

REV.	DATE	DESCRIPTION	BY.
B	11/2015	LABC NOTE ADDED.	SJB
A	09.2014	BLOCK FORMATS NOTE REVISED	SJB

These details have been produced for guidance only. It is the responsibility of the building designer to ensure that the details shown are compatible with the overall building design and will satisfy the relevant parts of the Building Regulations applicable before they are adopted into the project design.

**H+H** H+H UK Limited  
Technical Services Dept.  
Celcon House  
Ightham, Sevenoaks  
Kent, TN15 9HZ.  
Tel +44 (0)1732 880580  
Fax +44 (0)1732 887013  
E-mail tsd@hhcelcon.co.uk

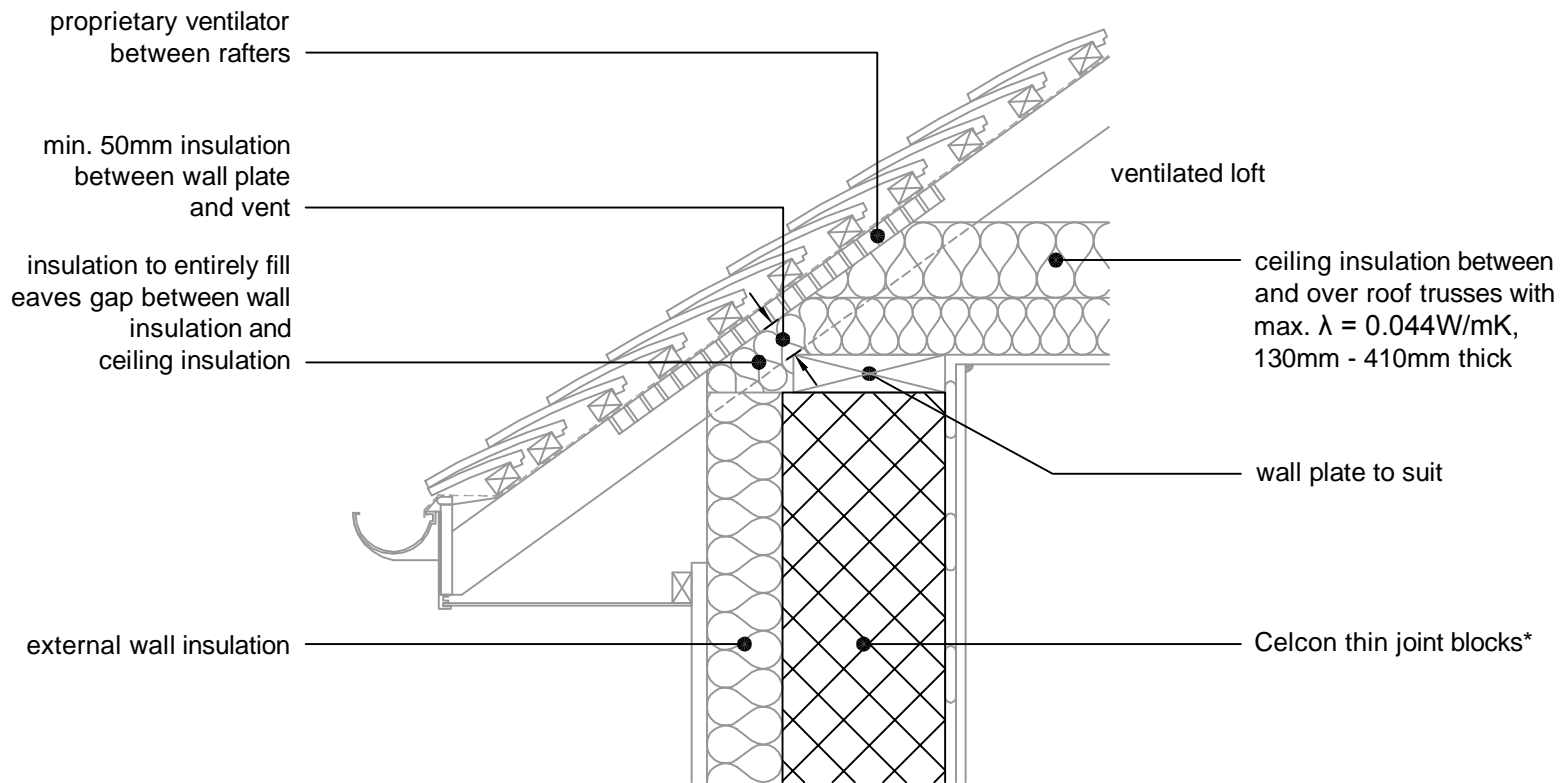
### THIN JOINT

TITLE  
Solid External Masonry Wall,  
Externally Insulated - Pitched Roof, Gable, Insulation  
At Rafter Level, Unventilated Rafter Void

DWG No. **HH-TJ-SW-10**

DRAWN BY **SJB** CHECKED BY **AHR**

DATE **Nov 2013** SCALE **1:100 @ A4** REV.NO. **B**



\* Thin joint block formats are:  
 Plus = 630mm x 215mm  
 Jumbo Blok = 630mm x 250mm  
 Multiplate = 630mm x 350mm  
 in 2mm Celfix mortar joints

For  $\Psi$  values applicable to this detail,  
 see Constructive Details CD0048  
 or  
 LABC Registered Construction  
 Details E10SMEW1 - 6.

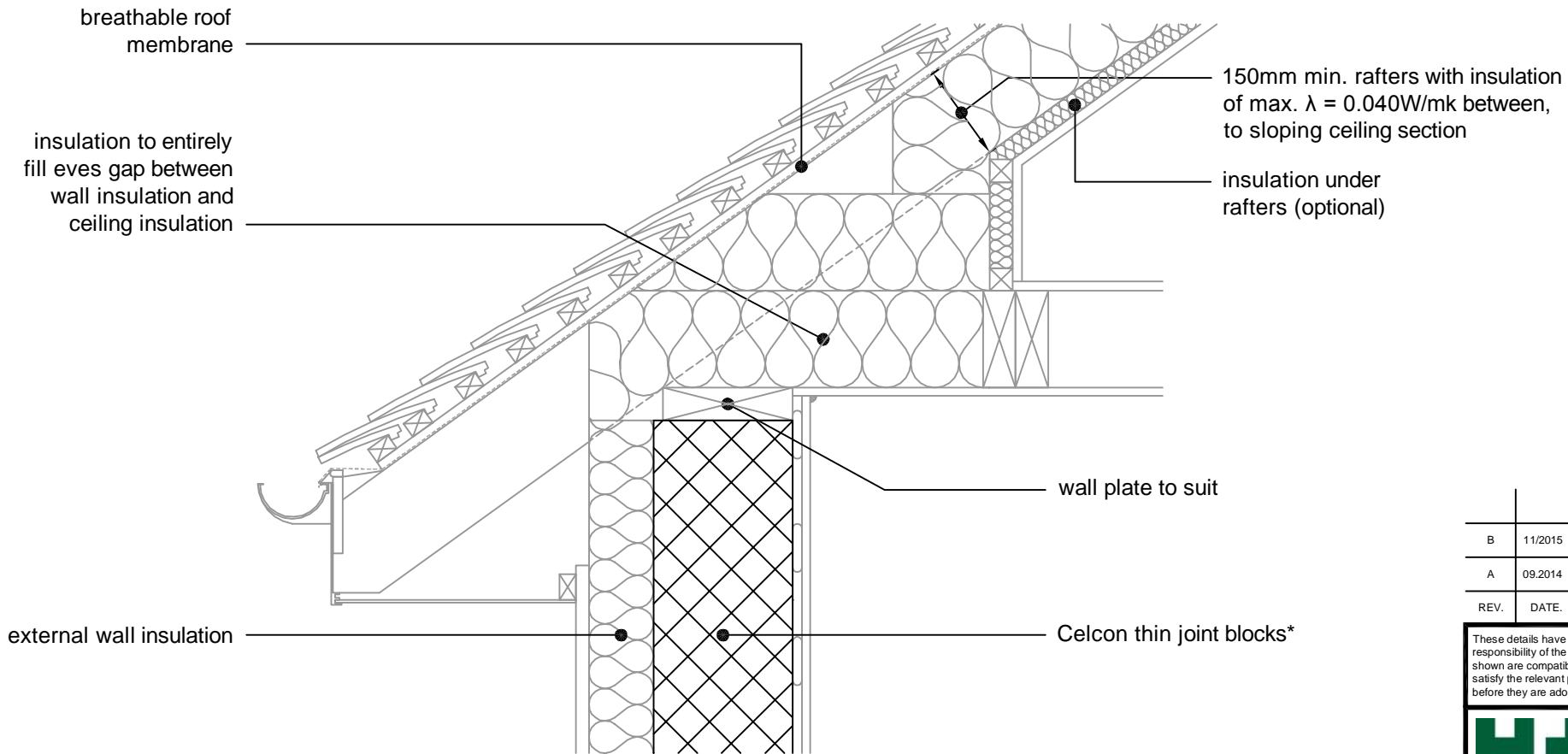
REV.	DATE	DESCRIPTION	BY.
B	11/2015	LABC NOTE ADDED.	SJB
A	09.2014	BLOCK FORMATS NOTE REVISED	SJB

These details have been produced for guidance only. It is the responsibility of the building designer to ensure that the details shown are compatible with the overall building design and will satisfy the relevant parts of the Building Regulations applicable before they are adopted into the project design.

**H+H** H+H UK Limited  
 Technical Services Dept.  
 Celcon House  
 Ightham, Sevenoaks  
 Kent, TN15 9HZ.  
 Tel +44 (0)1732 880580  
 Fax +44 (0)1732 887013  
 E-mail tsd@hhcelcon.co.uk

**THIN JOINT**

TITLE Solid External Masonry Wall, Externally Insulated - Pitched Roof, Eaves, Insulation At Ceiling Level, Ventilated Loft		
DWG No. <b>HH-TJ-SW-11</b>		
DRAWN BY <b>SJB</b>	CHECKED BY <b>AHR</b>	
DATE Nov 2013	SCALE 1:100 @ A4	REV.NO. B



\* Thin joint block formats are:  
 Plus = 630mm x 215mm  
 Jumbo Blok = 630mm x 250mm  
 Multiplate = 630mm x 350mm  
 in 2mm Celfix mortar joints

For  $\Psi$  values applicable to this detail,  
 see Constructive Details CD0049  
 or  
 LABC Registered Construction  
 Details E11SMEW1 - 6.

REV.	DATE	DESCRIPTION	BY.
B	11/2015	LABC NOTE ADDED.	SJB
A	09.2014	BLOCK FORMATS NOTE REVISED	SJB

These details have been produced for guidance only. It is the responsibility of the building designer to ensure that the details shown are compatible with the overall building design and will satisfy the relevant parts of the Building Regulations applicable before they are adopted into the project design.

**H+H** H+H UK Limited  
 Technical Services Dept.  
 Celcon House  
 Ightham, Sevenoaks  
 Kent, TN15 9HZ.  
 Tel +44 (0)1732 880580  
 Fax +44 (0)1732 887013  
 E-mail tsd@hhcelcon.co.uk

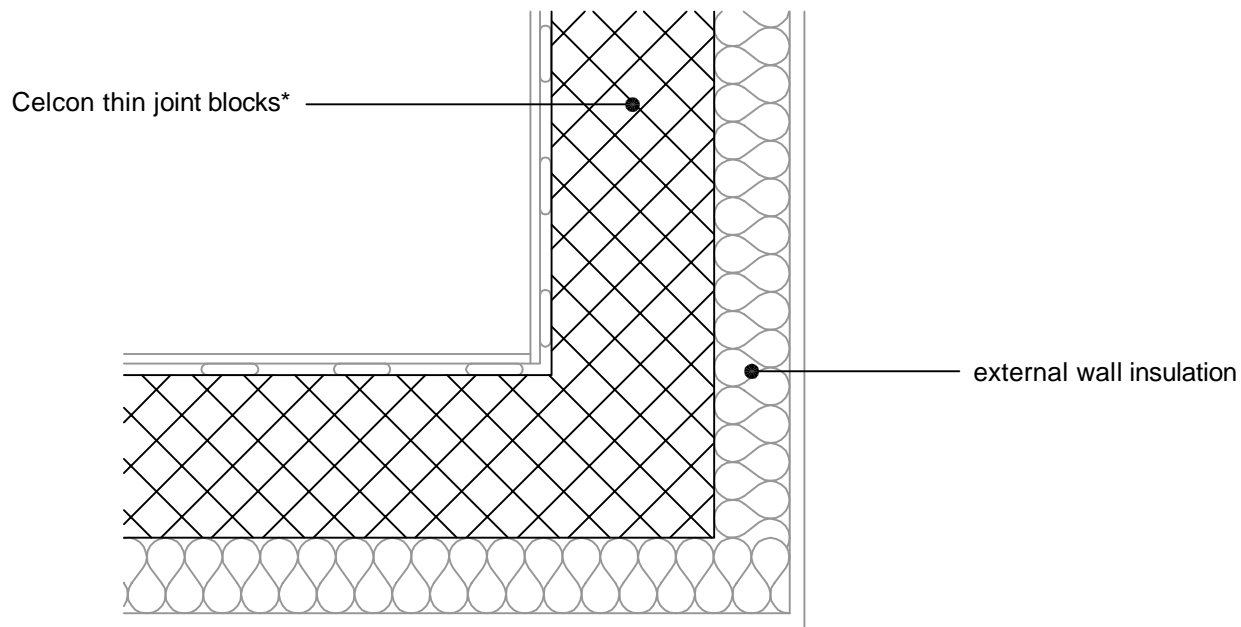
### THIN JOINT

TITLE  
 Solid External Masonry Wall,  
 Externally Insulated - Pitched Roof, Eaves, Insulation  
 At Rafter Level, Unventilated Rafter Void

DWG No. HH-TJ-SW-12

DRAWN BY SJB CHECKED BY AHR

DATE Nov 2013 SCALE 1:100 @ A4 REV.NO. B



\* Thin joint block formats are:  
 Plus = 630mm x 215mm  
 Jumbo Blok = 630mm x 250mm  
 Multiplate = 630mm x 350mm  
 in 2mm Celfix mortar joints

For  $\Psi$  values applicable to this detail,  
 see Constructive Details CD0050  
 or  
 LABC Registered Construction  
 Details E16SMEW1 - 6.

REV.	DATE	DESCRIPTION	BY.
B	11/2015	LABC NOTE ADDED.	SJB
A	09.2014	BLOCK FORMATS NOTE REVISED	SJB

These details have been produced for guidance only. It is the responsibility of the building designer to ensure that the details shown are compatible with the overall building design and will satisfy the relevant parts of the Building Regulations applicable before they are adopted into the project design.

**H+H** H+H UK Limited  
 Technical Services Dept.  
 Celcon House  
 Ightham, Sevenoaks  
 Kent, TN15 9HZ.  
 Tel +44 (0)1732 880580  
 Fax +44 (0)1732 887013  
 E-mail [tsd@hhcelcon.co.uk](mailto:tsd@hhcelcon.co.uk)

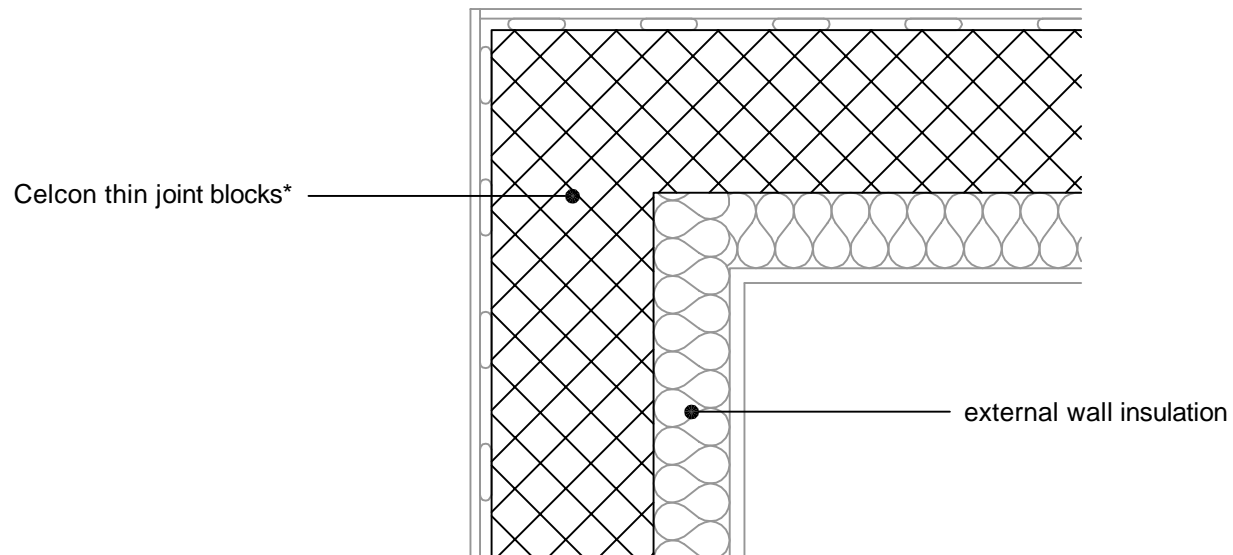
### THIN JOINT

TITLE  
 Solid External Masonry Wall,  
 Externally Insulated - Normal Corner

DWG No. HH-TJ-SW-13

DRAWN BY **SJB** CHECKED BY **AHR**

DATE Nov 2013 SCALE 1:100 @ A4 REV.NO. B



\* Thin joint block formats are:  
 Plus = 630mm x 215mm  
 Jumbo Blok = 630mm x 250mm  
 Multiplate = 630mm x 350mm  
 in 2mm Celfix mortar joints

For  $\Psi$  values applicable to this detail,  
 see Constructive Details CD0051  
 or  
 LABC Registered Construction  
 Details E17SMEW1 - 6.

REV.	DATE	DESCRIPTION	BY.
B	11/2015	LABC NOTE ADDED.	SJB
A	09.2014	BLOCK FORMATS NOTE REVISED	SJB

These details have been produced for guidance only. It is the responsibility of the building designer to ensure that the details shown are compatible with the overall building design and will satisfy the relevant parts of the Building Regulations applicable before they are adopted into the project design.

**H+H** H+H UK Limited  
 Technical Services Dept.  
 Celcon House  
 Ightham, Sevenoaks  
 Kent, TN15 9HZ.  
 Tel +44 (0)1732 880580  
 Fax +44 (0)1732 887013  
 E-mail tsd@hhcelcon.co.uk

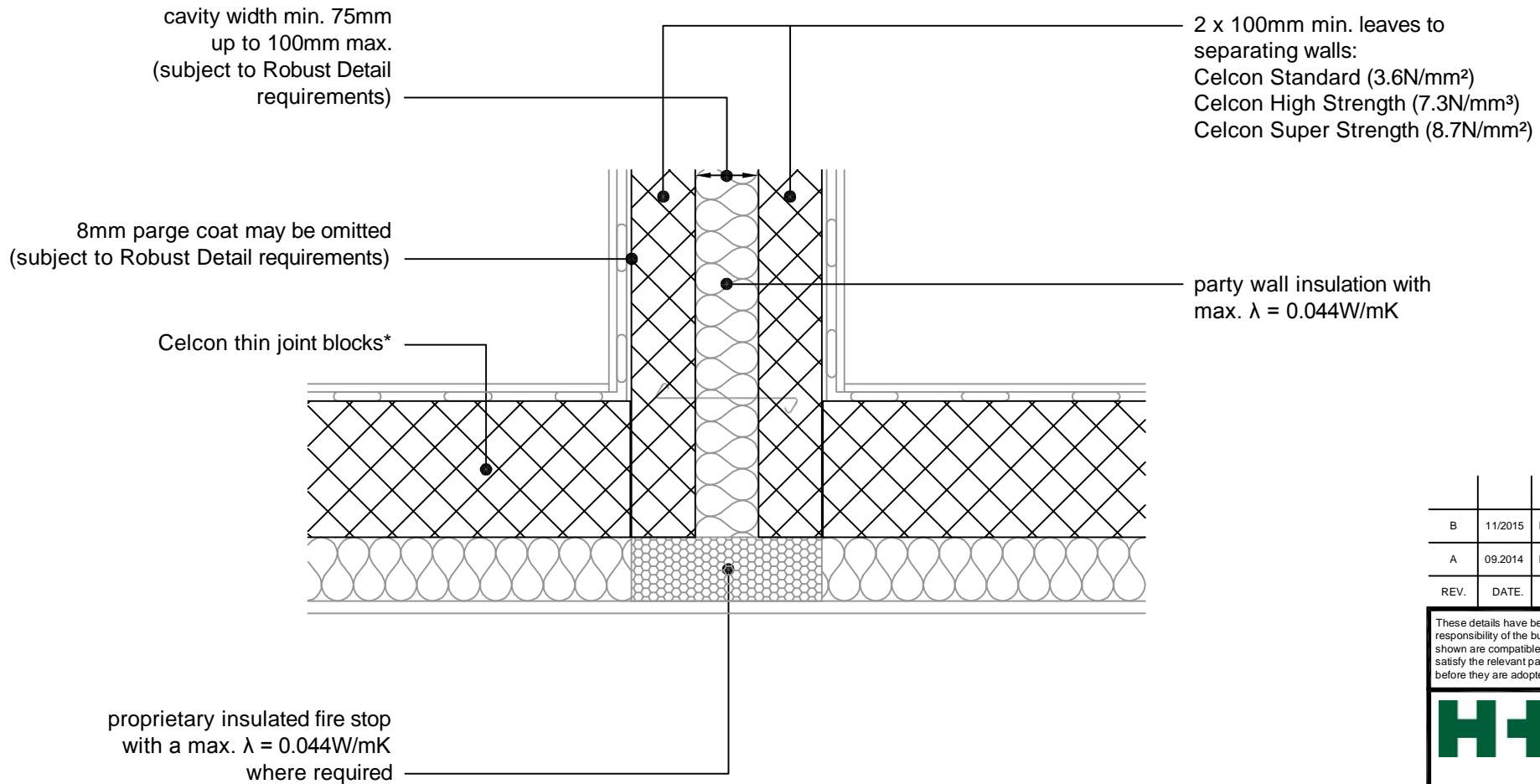
### THIN JOINT

TITLE  
 Solid External Masonry Wall,  
 Externally Insulated - Inverted Corner

DWG No. HH-TJ-SW-14

DRAWN BY **SJB** CHECKED BY **AHR**

DATE Nov 2013 SCALE 1:100 @ A4 REV.NO. B



\* Thin joint block formats are:  
 Plus = 630mm x 215mm  
 Jumbo Blok = 630mm x 250mm  
 Multiplate = 630mm x 350mm  
 in 2mm Celfix mortar joints

For  $\Psi$  values applicable to this detail,  
 see Constructive Details CD0052  
 or  
 LABC Registered Construction  
 Details E18SMEW1 - 12.

REV.	DATE	DESCRIPTION	BY.
B	11/2015	LABC NOTE ADDED.	SJB
A	09.2014	BLOCK FORMATS NOTE REVISED	SJB

These details have been produced for guidance only. It is the responsibility of the building designer to ensure that the details shown are compatible with the overall building design and will satisfy the relevant parts of the Building Regulations applicable before they are adopted into the project design.

**H+H** H+H UK Limited  
 Technical Services Dept.  
 Celcon House  
 Ightham, Sevenoaks  
 Kent, TN15 9HZ.  
 Tel +44 (0)1732 880580  
 Fax +44 (0)1732 887013  
 E-mail [tsd@hhcelcon.co.uk](mailto:tsd@hhcelcon.co.uk)

### THIN JOINT

TITLE Solid External Masonry Wall,  
 Externally Insulated - Party Wall Between  
 Dwellings

DWG No. HH-TJ-SW-15

DRAWN BY SJB CHECKED BY AHR

DATE Nov 2013 SCALE 1:100 @ A4 REV.NO. B